

# BWV - 956

## FUGA

TRANSCRIPCIÓN: LUIS ALVAREZ

J. S. BACH  
(1685-1750)

♩ = 100

Guitarra 1



♩ = 100

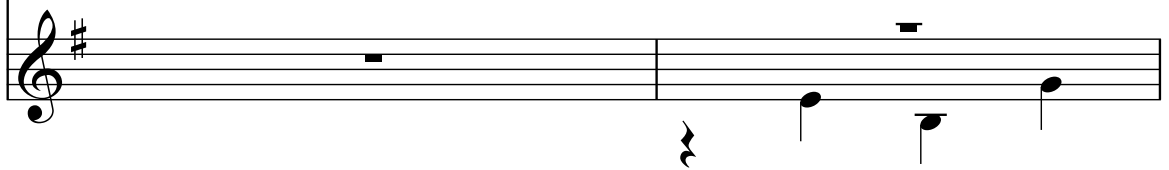
Guitarra 2



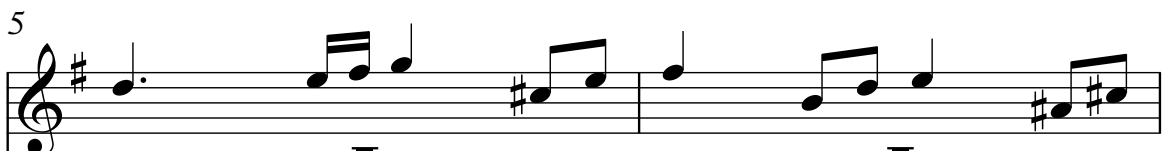
Guit.1



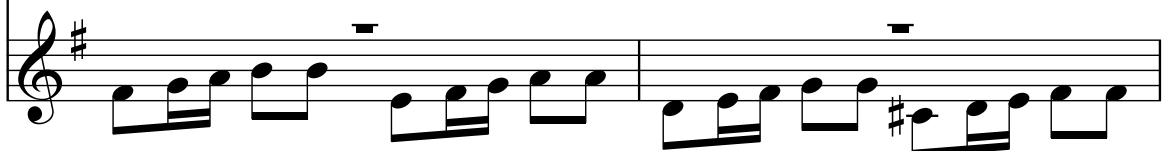
Guit.2



Guit.1



Guit.2



7

**Guit.1**

**Guit.2**

9

**Guit.1**

**Guit.2**

11

**Guit.1**

**Guit.2**

13

**Guit.1**

**Guit.2**

15

**Guit.1**

**Guit.2**

17

**Guit.1**

**Guit.2**

19

**Guit.1**

**Guit.2**


21

**Guit.1**

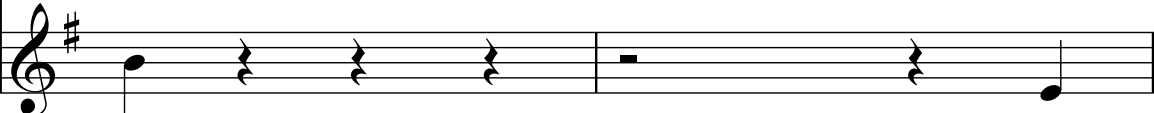
**Guit.2**

23

**Guit.1**



**Guit.2**



25

**Guit.1**



**Guit.2**




27

**Guit.1**



**Guit.2**



29

**Guit.1**



**Guit.2**



31

Guit.1

Guit.2

Detailed description: This system contains measures 31 and 32. Guit.1 (top staff) starts with a half note G4, followed by quarter notes A4, B4, C5, and D5. It then has a half note E5, followed by a quarter note D5, and a half note C5. The final measure has a quarter note B4, an eighth note A4, and a quarter note G4. Guit.2 (bottom staff) has a continuous eighth-note pattern: G4, A4, B4, C5, D5, E5, D5, C5, B4, A4, G4. It then has a quarter rest, followed by a quarter note G4, and a half note F#4. The final measure has a quarter note E4, an eighth note D4, and a quarter note C4.

33

Guit.1

Guit.2

Detailed description: This system contains measures 33 and 34. Guit.1 (top staff) has a continuous eighth-note pattern: G4, A4, B4, C5, D5, E5, D5, C5, B4, A4, G4. It then has a quarter note G4, followed by a quarter note F#4, and a half note E4. The final measure has a quarter note D4, an eighth note C4, and a quarter note B3. Guit.2 (bottom staff) has a continuous eighth-note pattern: G4, A4, B4, C5, D5, E5, D5, C5, B4, A4, G4. It then has a quarter note G4, followed by a quarter note F#4, and a half note E4. The final measure has a quarter note D4, an eighth note C4, and a quarter note B3.

35

Guit.1

Guit.2

Detailed description: This system contains measures 35 and 36. Guit.1 (top staff) has a continuous eighth-note pattern: G4, A4, B4, C5, D5, E5, D5, C5, B4, A4, G4. It then has a quarter note G4, followed by a quarter note F#4, and a half note E4. The final measure has a quarter note D4, an eighth note C4, and a quarter note B3. Guit.2 (bottom staff) has a continuous eighth-note pattern: G4, A4, B4, C5, D5, E5, D5, C5, B4, A4, G4. It then has a quarter note G4, followed by a quarter note F#4, and a half note E4. The final measure has a quarter note D4, an eighth note C4, and a quarter note B3.

37


Guit.1

Guit.2


Detailed description: This system contains measures 37 and 38. Guit.1 (top staff) has a continuous eighth-note pattern: G4, A4, B4, C5, D5, E5, D5, C5, B4, A4, G4. It then has a quarter note G4, followed by a quarter note F#4, and a half note E4. The final measure has a quarter note D4, an eighth note C4, and a quarter note B3. Guit.2 (bottom staff) has a continuous eighth-note pattern: G4, A4, B4, C5, D5, E5, D5, C5, B4, A4, G4. It then has a quarter note G4, followed by a quarter note F#4, and a half note E4. The final measure has a quarter note D4, an eighth note C4, and a quarter note B3.

39

**Guit.1**



**Guit.2**




41

**Guit.1**



**Guit.2**



43

**Guit.1**

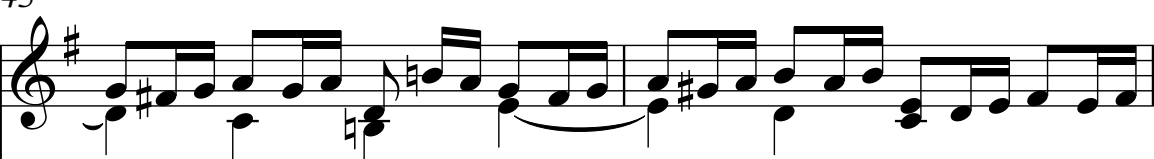


**Guit.2**

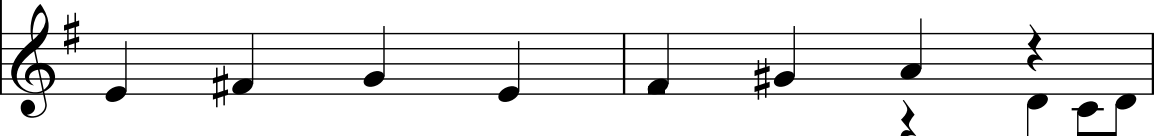


45

**Guit.1**



**Guit.2**



47

**Guit.1**

**Guit.2**

49

**Guit.1**

**Guit.2**

51

**Guit.1**

**Guit.2**

53

**Guit.1**

**Guit.2**

55

**Guit.1**

**Guit.2**

57

**Guit.1**

**Guit.2**

59

**Guit.1**

**Guit.2**

61

**Guit.1**

**Guit.2**



62

**Guit.1**

**Guit.2**

63

**Guit.1**

**Guit.2**

64

**Guit.1**

**Guit.2**

65

**Guit.1**

**Guit.2**