

# BWV 1008

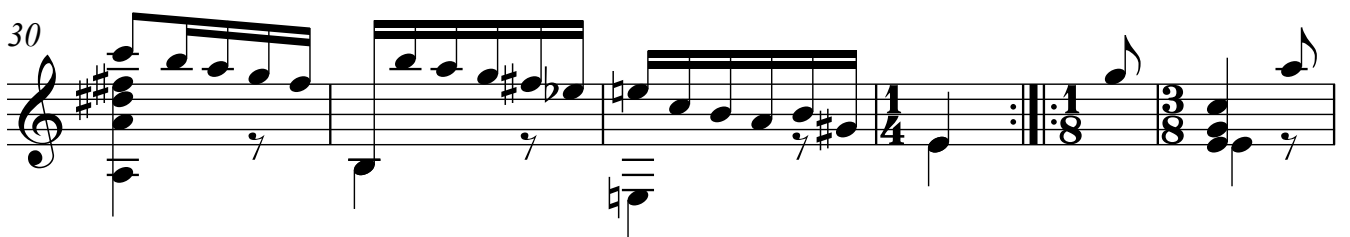
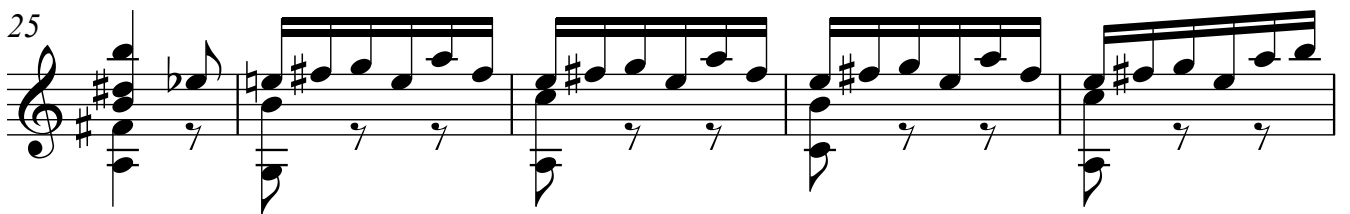
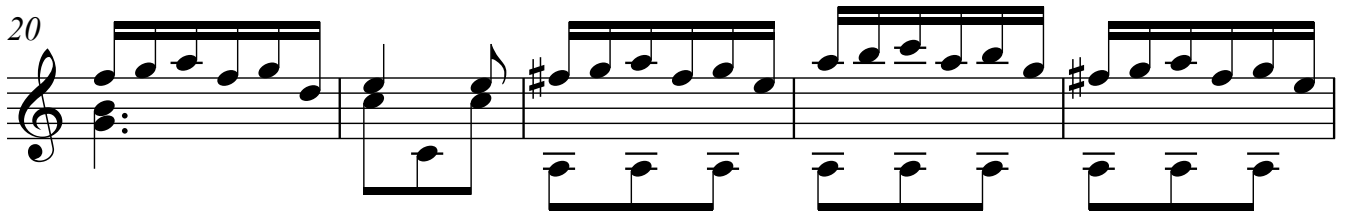
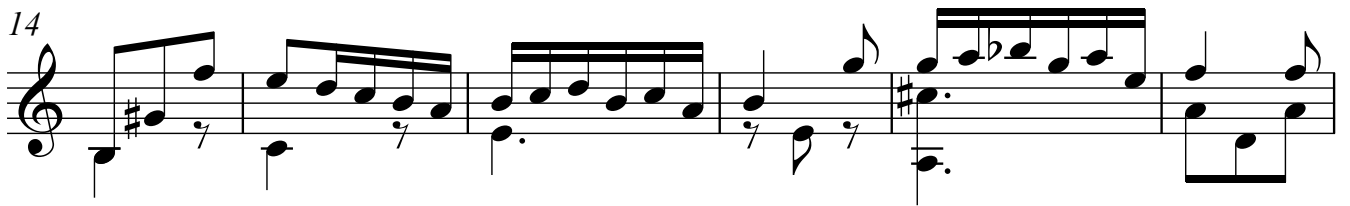
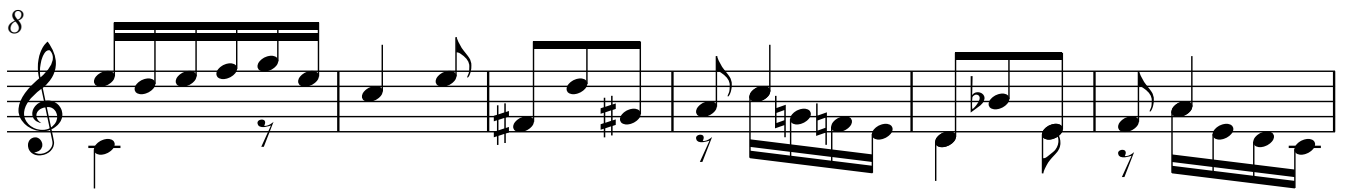
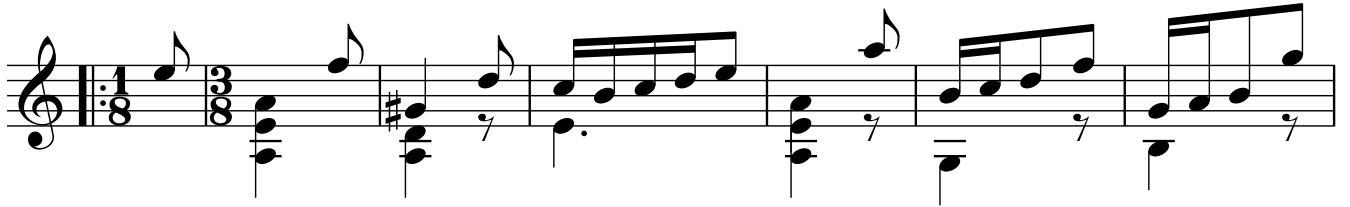
## CELLO SUITE N°2

### 7.- Gigue

ARMONIZADA POR LUIS ALVAREZ

J.S. BACH

♩ = 90



36

42

47

53

59

64

69

74

The image displays a musical score for the Gigue in C major, BWV 1008, from the Cello Suite No. 2 by Johann Sebastian Bach. The score is written in treble clef with a key signature of one sharp (F#) and a common time signature (C). It consists of eight staves of music, each beginning with a measure number: 36, 42, 47, 53, 59, 64, 69, and 74. The music features a variety of rhythmic patterns, including eighth and sixteenth notes, and rests. There are several instances of grace notes (marked with a '7') and dynamic markings such as 'p' (piano) and 'f' (forte). The piece concludes with a double bar line and repeat dots at the end of the eighth staff.