

**BWV - 1079**  
**OFRENDA MÚSICAL**  
**10 CANONES**  
**SUPER TEMA REGIUM (8)**  
**NUMERO 6**  
**CANON PERPETUUS**  
**CANON A 2 PER TONOS**

**TRANSCRIPCIÓN: LUIS ALVAREZ**

**J. S. BACH**  
**(1685-1750)**

$\text{♩} = 60$

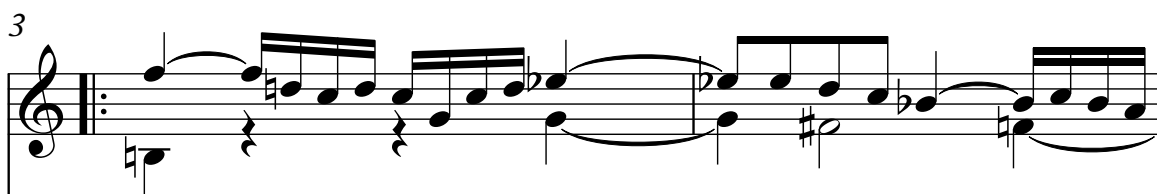
**Guitarra 1**



**Guitarra 2**



**Guit.1**



**Guit.2**



5

**Guit.1**

**Guit.2**

Musical notation for measures 5 and 6. Guit.1 starts with a treble clef, a key signature of one sharp (F#), and a 7/4 time signature. It features a melodic line with a fermata over the final measure. Guit.2 provides a rhythmic accompaniment with eighth and sixteenth notes.

6

**Guit.1**

**Guit.2**

Musical notation for measures 7 and 8. Guit.1 continues the melodic line with a fermata. Guit.2 continues the rhythmic accompaniment.

8

**Guit.1**

**Guit.2**

Musical notation for measures 9 and 10. Guit.1 features a melodic line with a fermata. Guit.2 continues the rhythmic accompaniment.

10

**Guit.1**

**Guit.2**

Musical notation for measures 11 and 12. Both staves end with a double bar line and a repeat sign. The time signature changes to 2/4 at the end of measure 11.