

# EJERCICIOS

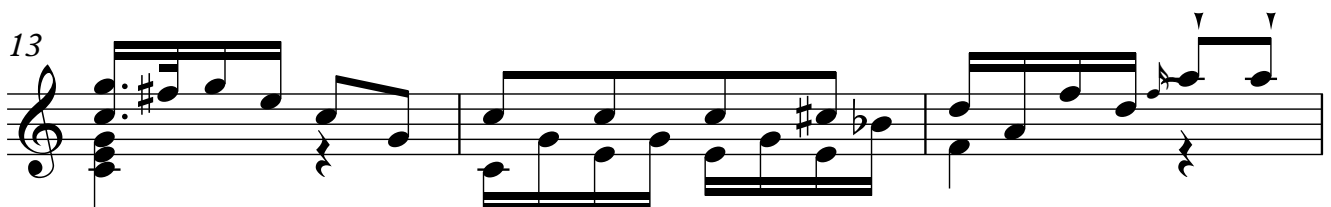
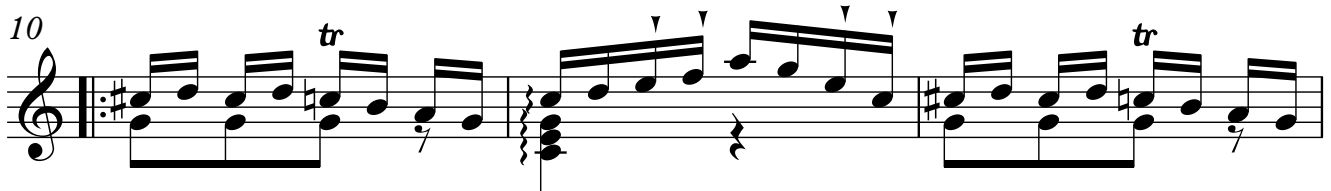
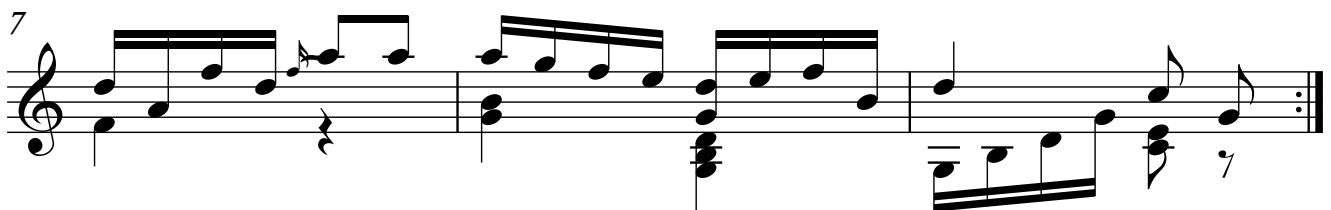
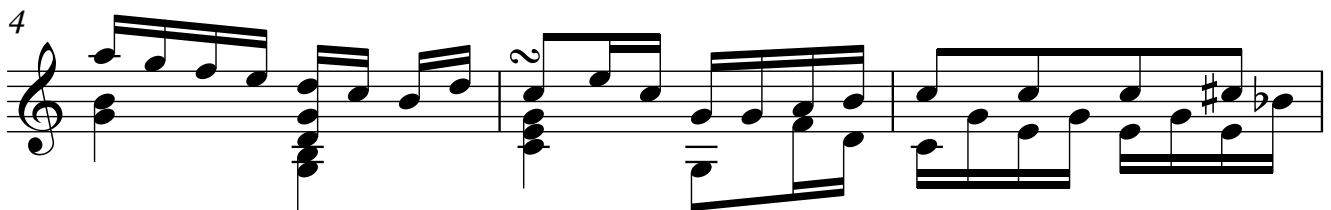
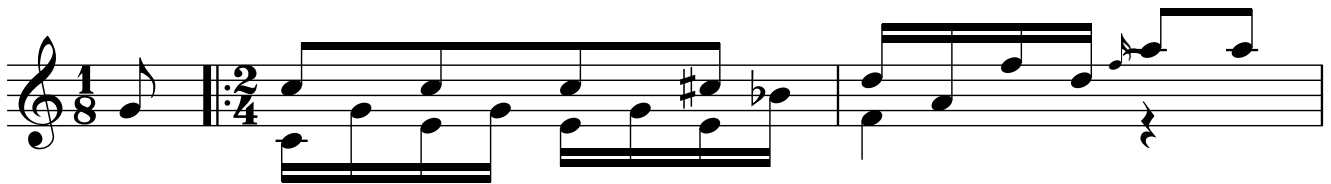
## ROMANCE

### Número 4

TRANSCRIPCIÓN: LUIS ALVAREZ

BLUM (CARL)  
(1786 - 1844)

♩ = 60



2  
16

19

22

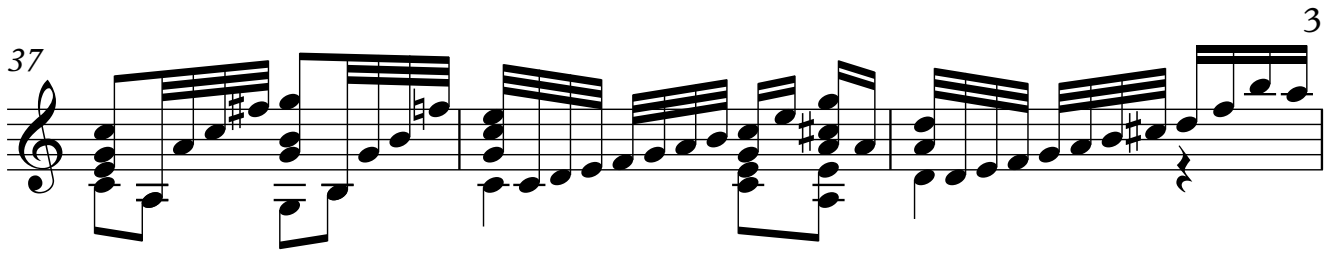
25

28

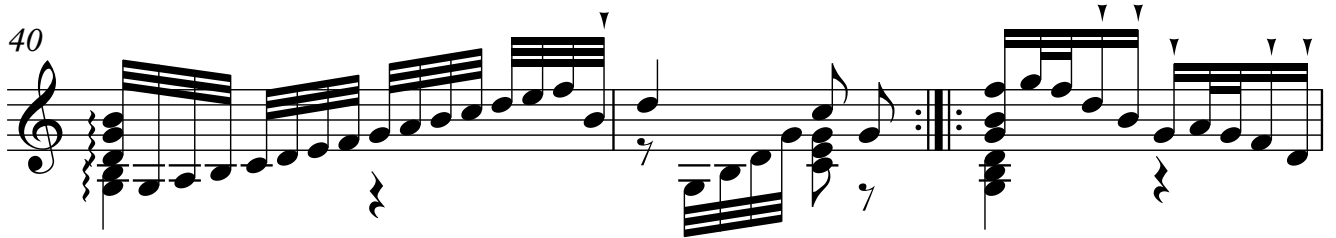
31

34

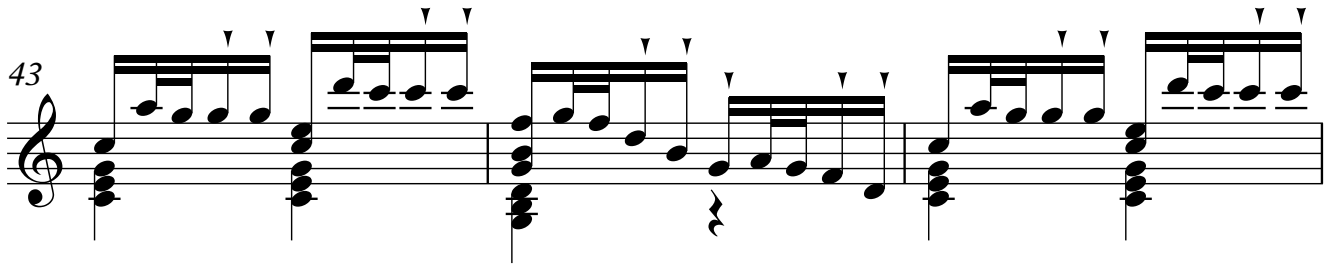
37



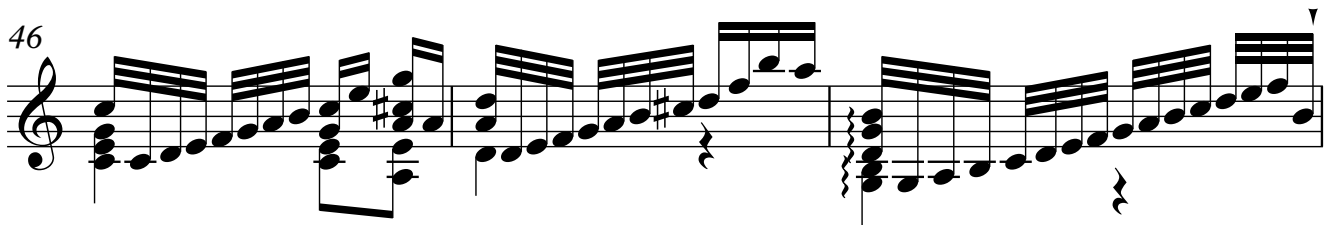
40



43

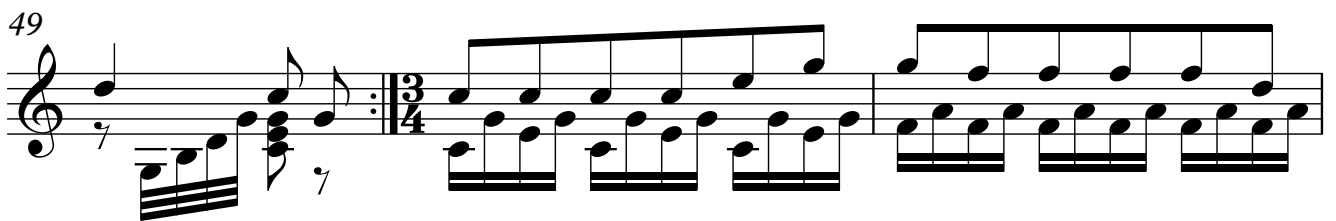


46

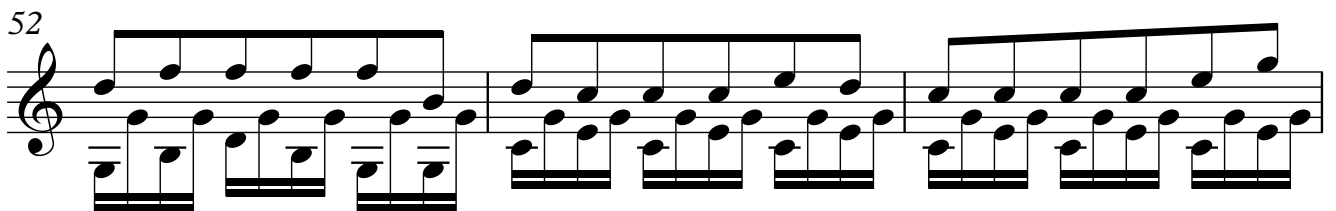


**LENTAMENTE**

49



52



55



4

58

Measures 58-60: Treble clef, 4/4 time. Measure 58: D4 quarter, E4 quarter, F4 quarter, G4 quarter. Measure 59: A4 quarter, B4 quarter, C5 quarter, D5 quarter. Measure 60: E5 quarter, F5 quarter, G5 quarter, A5 quarter.

61

Measures 61-63: Treble clef, 4/4 time. Measure 61: B4 quarter, C5 quarter, D5 quarter, E5 quarter. Measure 62: F5 quarter, G5 quarter, A5 quarter, B5 quarter. Measure 63: C6 quarter, D6 quarter, E6 quarter, F6 quarter.

64

Measures 64-66: Treble clef, 4/4 time. Measure 64: G5 quarter, F5 quarter, E5 quarter, D5 quarter. Measure 65: C5 quarter, B4 quarter, A4 quarter, G4 quarter. Measure 66: F4 quarter, E4 quarter, D4 quarter, C4 quarter.

67

Measures 67-69: Treble clef, 4/4 time. Measure 67: B3 quarter, A3 quarter, G3 quarter, F3 quarter. Measure 68: E3 quarter, D3 quarter, C3 quarter, B2 quarter. Measure 69: A2 quarter, G2 quarter, F2 quarter, E2 quarter.

70

Measures 70-72: Treble clef, 4/4 time. Measure 70: D3 quarter, C3 quarter, B2 quarter, A2 quarter. Measure 71: G2 quarter, F2 quarter, E2 quarter, D2 quarter. Measure 72: C2 quarter, B1 quarter, A1 quarter, G1 quarter.

73

Measures 73-75: Treble clef, 4/4 time. Measure 73: F2 quarter, E2 quarter, D2 quarter, C2 quarter. Measure 74: B1 quarter, A1 quarter, G1 quarter, F1 quarter. Measure 75: E1 quarter, D1 quarter, C1 quarter, B0 quarter.

76

Measures 76-78: Treble clef, 4/4 time. Measure 76: A1 quarter, G1 quarter, F1 quarter, E1 quarter. Measure 77: D1 quarter, C1 quarter, B0 quarter, A0 quarter. Measure 78: G0 quarter, F0 quarter, E0 quarter, D0 quarter.