

OPUS - 195

PARTE 2

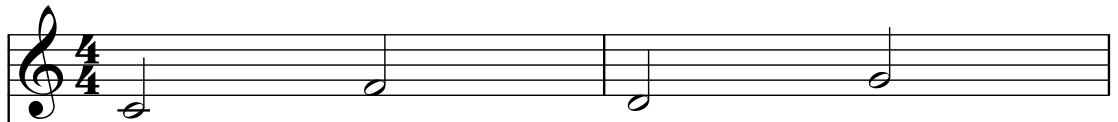
NUMERO 8

TRANSCRIPCIÓN: LUIS ALVAREZ

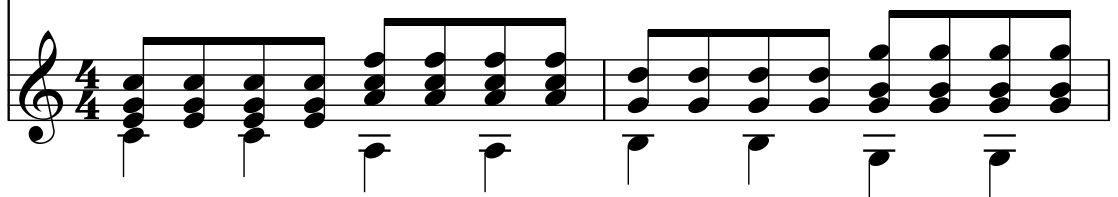
FERNANDO CARULLI
(1770-1841)

♩ = 70

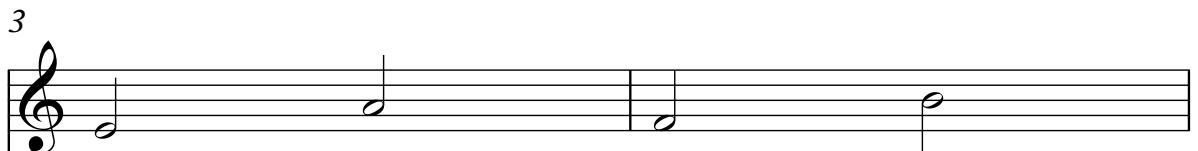
Violín



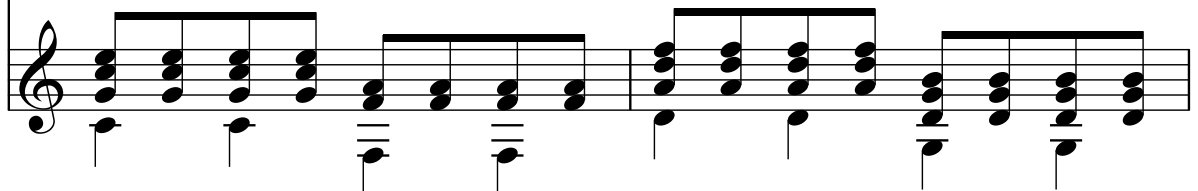
Guitarra



Vln.



Guit.



5

Vln.

Guit.

7

Vln.

Guit.

9

Vln.

Guit.

11

Vln.

Guit.

The image shows a musical score for Violin (Vln.) and Guitar (Guit.) across six systems. Each system contains two staves. The Violin part is written in treble clef with a key signature of one sharp (F#). The Guitar part is written in treble clef. The score is divided into measures by bar lines. Measure numbers 5, 7, 9, and 11 are indicated at the beginning of their respective systems. The Violin part consists of simple, sustained notes. The Guitar part features a complex rhythmic pattern of chords and single notes, often with a heavy down-bow or pick attack indicated by thick stems. There are repeat signs in the Violin part at measures 9 and 11.

13

Vln.




Guit.



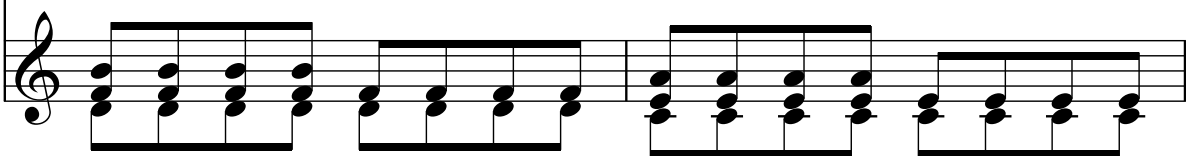
Violin staff (measures 13-14): Treble clef, four quarter notes (G4, A4, B4, C5).
Guitar staff (measures 13-14): Treble clef, four measures of chords: G4-B4-D5, A4-C5-E5, B4-D5-F5, G4-A4-B4.

15

Vln.



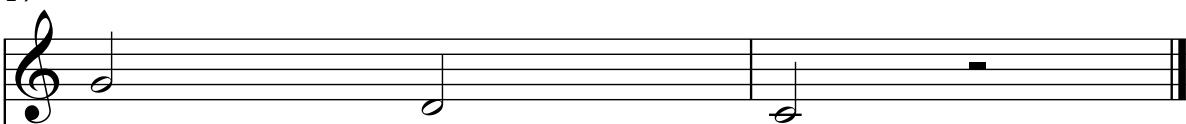
Guit.



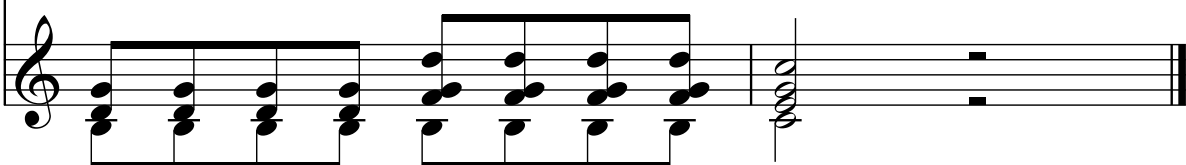
Violin staff (measures 15-16): Treble clef, four quarter notes (D5, E5, F5, G5).
Guitar staff (measures 15-16): Treble clef, four measures of chords: G4-B4-D5, A4-C5-E5, B4-D5-F5, G4-A4-B4.

17

Vln.



Guit.



Violin staff (measures 17-18): Treble clef, four quarter notes (A4, B4, C5, D5).
Guitar staff (measures 17-18): Treble clef, four measures of chords: G4-B4-D5, A4-C5-E5, B4-D5-F5, G4-A4-B4.