

Grand

Concerto pour la

Clarinete par

Bernard Crussell,

(Œuv. 5.)

Allegro.

Flauto

Oboe 1.

Oboe 2.

Fagotto 1

Fagotto 2

Corno 1 2. in F

Tromba 2. in F

Timpani

Clarinete solo
in B.

Violino 1

Violino 2

Viola

Violoncello
& Basso.

pp Vcllo.
pp Vcllo.

Handwritten musical score for a symphony orchestra, measures 110-115. The score is written on ten staves, each labeled with an instrument: Fl. (Flute), Ob. (Oboe), Bsn. (Bassoon), Hrn. (Horn), Trp. (Trumpet), Timp. (Timpani), CLAR. Solo (Clarinet Solo), VI (Violin I), VII (Violin II), Va. (Viola), and c/B (Cello/Double Bass). The music is in 4/4 time, with a key signature of one flat (B-flat). The score includes various musical notations such as notes, rests, slurs, and dynamic markings. The Flute part features a melodic line with slurs. The Oboe and Bassoon parts provide harmonic support. The Horns play sustained chords. The Trumpets and Timpani play rhythmic patterns. The Clarinet Solo part is silent. The Violins and Viola play complex rhythmic patterns. The Cello/Double Bass part provides a bass line with some trills.

Empty musical staves, consisting of ten blank staves with five lines each, located below the main score.

Handwritten musical score for a symphony orchestra, page 4. The score includes staves for Flute (Fl), Oboe (ob), Bassoon (Bsn.), Horn (Hr), Trumpet (Tp), Timpani (Timp), Clarinet (Clar), Violin I (VI), Violin II (VII), Viola (Va), and Cello/Double Bass (c/b). The music is in 4/4 time and features various dynamics such as pp, p, and f. There are 'solo' markings above the Flute and Bassoon staves. The score shows a complex texture with many notes, including some dense passages in the strings and woodwinds.

Empty musical staves at the bottom of the page.

Handwritten musical score for a symphony orchestra, page 5. The score includes staves for Flute (Fl), Oboe (ob), Bassoon (BSN), Horn (HN), Trumpet (TRP), Trombone (TBN), Clarinet Solo (CLAR SOLO), Violin I (VI), Violin II (VII), Viola (Va), and Cello (Cb). The music features various dynamics such as *p*, *cresc*, *sf*, *f*, and markings for "Fug" and "Solo".

Fl *Solo* *p* *f*

ob *Solo* *p* *f* *cresc*

Bsn *f* *cresc*

Hn

Trp

Timp *f* *cresc*

CLAR SOLO

VI *cresc*

VII *p* *cresc*

Va *p* *cresc*

C/B *p* *cresc*

Handwritten musical score for a symphony orchestra, page 7. The score includes staves for Flute (Fl), Oboe (ob), Bassoon (BSN), Horn (HN), Trumpet (TRP), Timpani (Timp.), Clarinet Solo (CLAR SOLO), Violin I (VI), Violin II (VII), Viola (Va), and Cello/Bass (C-B). The music features various dynamics such as *p*, *f*, and *dim.*, and includes performance instructions like "Solo" and "Clarinet solo risoluto".

Empty musical staves at the bottom of the page.

Fl
Bsn I
Clar.
VI
VII
Va
C-B

This section of the score includes parts for Flute, Bassoon I, Clarinet, Violin I, Violin II, Viola, and Cello/Bass. The Clarinet part features a prominent melodic line with dynamic markings such as *sf*, *f*, and *pp*. The Violin I and II parts provide harmonic support with various articulations. The Viola and Cello/Bass parts are primarily accompanimental, with the Cello/Bass part showing a *Volto* marking and a *dolce* dynamic.

Flauto
Fag. I
Corno
Solo
VI
VII
Va
C/B

This section of the score includes parts for Flute, Bassoon I, Horn, Solo Violin, Violin I, Violin II, Viola, and Cello/Bass. The Solo Violin part has a *Solo* marking and a *pp* dynamic. The Bassoon I part has a *Solo* marking. The Horn part has a *Corno II* marking. The Violin I and II parts have *pp* markings. The Viola and Cello/Bass parts have *pp* markings. The Cello/Bass part has a *pp* marking and a *crise* marking.

Four empty musical staves at the bottom of the page, likely for additional instruments or as a continuation of the score.

Flauti
Oboe II
Fagotti II
Solo
Viol
Va
Cb

Fl
Ob
BSN
HNJ
Solo CLAR.
VI
VII
Va
Cb

FL

OB

BSN

Solo CLAR

VI

VII

Va

C-B

Oboe I, II

Fag.

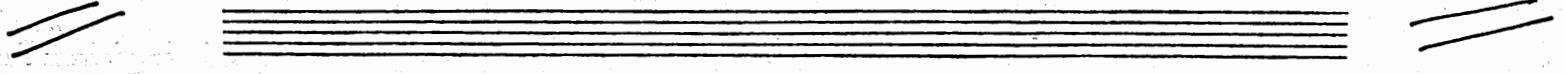
con forza

cresc. >

p

f

mf



Solo CLAR.

VI

VII

Va

C-B

p

Musical score for woodwinds and strings. Instruments include SOLO CLAR, VI, VII, Va, and C/B. Dynamics include *cresc* and *pp*. The score shows a melodic line for the solo clarinet and rhythmic accompaniment for the other instruments.

Musical score for woodwinds and strings. Instruments include FL, OB, BSN, TNU, SOLO CLAR, VI, VII, Va, and C/B. Dynamics include *f*, *sf*, *pp*, and *cresc*. Includes a section for *Corno in Es*. The score features complex textures with many notes and rests.

Handwritten musical score for a symphony, page 14. The score is arranged in two systems of staves. The top system includes Flute (FL), Oboe (OB), Bassoon (BSN), Horn (HN), Violin I (VI), Violin II (VII), Viola (Va), and Cello (C-B). The bottom system includes Flute (FL), Oboe (OB), Bassoon (BSN), Horn (HN), Trumpet (TRP), Trombone (Timp), Violin I (VI), Violin II (VII), Viola (Va), and Cello (C-B). The notation is dense with various musical symbols, including notes, rests, dynamics (p, f, mf), and articulation marks. The piece is in common time (C).

FL *Solo* *pp*

OB *Solo* *pp*

BSN *Solo* *pp*

HN *Solo* *pp*

TRP

TIMP. *Tempo*

VI *pp*

VII *pp*

Va *pp*

C/B *pp*

FL *Solo* *pp*

OB

BSN *Solo* *pp*

HN *Solo* *pp*

TRP

Timp

VII *pp*

VII *pp*

Va *pp*

C/B *pp*

Solo
FL
Solo
OB
BSA
MN
Solo
CLAR
VI
VII
Va
Cb
af *p* *sf* *p* *arco* *p* *Bassi*

Corno
HU
SOLO
CLAR
VI
VII
Va
Cb
arco *f* *Tello* *f* *Bassi*

HN

SOLO

VI

VII

Va

C/B

FL

OB

BSN

HN

TRP

TBO

SOLO

VI

VII

Va

C/B

Timp

Tempo

p

pp

f

FL
OB
I
BSN
II
HN
TRP
Solo
VI
V
Va
Vc

OB
Solo
VI
V
Va
Vc

This system of musical notation includes the following parts and markings:

- Oboe (OB):** Features a melodic line with a *Fag.* (Fagotto) marking above the staff.
- Bassoon (BN):** Features a melodic line with a *p* (piano) dynamic marking below the staff.
- Solo Clarinet (Solo Clm):** Features a highly technical, rapid sixteenth-note passage.
- Violin I (VI):** Features a melodic line with a *p* dynamic marking.
- Violin II (VI):** Features a melodic line with a *p* dynamic marking.
- Viola (Va):** Features a melodic line with a *a dua* marking above the staff.
- Cello/Double Bass (Cb):** Features a bass line with a *p* dynamic marking.

This system of musical notation includes the following parts and markings:

- Flute (Fl):** Features a melodic line with a *p* dynamic marking.
- Oboe (OB):** Features a melodic line with a *p* dynamic marking.
- Bassoon (BN):** Features a melodic line with a *p* dynamic marking.
- Solo Violin I (Solo VI):** Features a highly technical, rapid sixteenth-note passage.
- Violin II (VI):** Features a melodic line with a *p* dynamic marking.
- Viola (Va):** Features a melodic line with a *p* dynamic marking.
- Cello/Double Bass (Cb):** Features a bass line with a *p* dynamic marking.

FL

OB

BSN

HN

TRP

SOLO

VI

VII

Va

Cb

Corno in F

Tromba

Timpani

FL

OB

BSN

HN

TRP

Timp

VI

VII

Va

Cb

Sag. Lu II

Timpani

Handwritten musical score for the first system, featuring staves for Flute (FL), Oboe (OB), Bassoon (BSN), Horn (HN), Trumpet (TRP), Solo, Violin I (VI), Violin II (VI), Viola (Va), and Cello/Double Bass (C/B). The Solo part includes dynamic markings such as *f*, *mf*, *pp*, and *dolce*. The C/B part includes *f*, *pp*, and *dolce* markings. The Solo part also has a *Vello* marking.

Handwritten musical score for the second system, featuring staves for Flute (FL), Oboe (OB), Bassoon (BSN), Horn (HN), Trumpet (TRP), Solo, Violin I (VI), Violin II (VI), Viola (Va), and Cello/Double Bass (C/B). The Solo part includes dynamic markings such as *f*, *pp*, and *cresc.*. The C/B part includes *f*, *pp*, and *cresc.* markings. The Solo part also has a *cresc.* marking.

Handwritten musical score for the first system, featuring multiple staves:

- OB** (Oboe): *Allegro* tempo marking, *Clara solo* instruction.
- BSA** (Bassoon): *Allegro* tempo marking, *solo* instruction.
- Solo** (Soloist): *rit.* (ritardando) marking, *a.t.* (ad libitum) marking, *rit.* marking.
- VI** (Violin I): *rit.* marking, *a.t.* marking.
- VII** (Violin II): *rit.* marking, *a.t.* marking.
- VC** (Viola): *rit.* marking, *a.t.* marking.
- Cello** (Cello): *p* (piano) dynamic marking.
- Bass** (Bass): *p* (piano) dynamic marking, *ff* (fortissimo) dynamic marking.

Handwritten musical score for the second system, featuring multiple staves:

- Fl. solo** (Flute solo): *Fl.* (flute) instrument marking, *solo* instruction.
- FL** (Flute): *Fl.* (flute) instrument marking.
- OB** (Oboe): *Ob.* (oboe) instrument marking.
- Solo** (Soloist): *Solo* instruction, *rit.* marking, *a.t.* marking.
- VI** (Violin I): *rit.* marking, *a.t.* marking.
- VII** (Violin II): *rit.* marking, *a.t.* marking.
- VC** (Viola): *rit.* marking, *a.t.* marking.
- C/B** (Cello/Bass): *p* (piano) dynamic marking, *ff* (fortissimo) dynamic marking.

Tutti

FL

OB

BSN

HN

TRP

Timp

Solo

VI

V2

Va

Cb

p dolce

coll. f. marc.

p arco

FL *p* *f*

Solo

VI

VII

V^a

C/B

Solo

VI

VII

V^a

C/B

TIMP
Flauti
Oboe
BSN
HN
TRP
Solo
VI
VII
VC
C/B

This system contains the first 12 staves of the score. The instruments listed are Timpani, Flutes, Oboe, Bassoon, Horn, Trumpet, Solo (likely Trombone), Violin I, Violin II, Viola, and Cello/Double Bass. The notation includes various rhythmic patterns, dynamic markings such as *pp* and *fp*, and some melodic lines with slurs.

FL
OB
BSN
HN
TRP
Solo
VI
VII
VC
C
Timpani

This system contains the second 12 staves of the score. The instruments listed are Flute, Oboe, Bassoon, Horn, Trumpet, Solo (likely Trombone), Violin I, Violin II, Viola, Cello, and Timpani. The notation is more complex, featuring a prominent flute solo in the first staff with the word "solo" written above it. Other staves show dense rhythmic textures and dynamic markings like *pp*, *fp*, and *arco*.

Solo
p *f* *dim.* *con espressione*

This system contains five staves. The top staff is marked 'Solo' and contains a melodic line with dynamic markings *p*, *f*, *dim.*, and *con espressione*. Below it are four staves: two for Violins (VI and VII), one for Viola (Va), and one for Cello/Bass. The lower staves feature rhythmic accompaniment with various dynamic markings such as *p*, *f*, and *sf*.

Solo
p *f* *decresc.* *decresc.* *decresc.*

This system contains five staves. The top staff is marked 'Solo' and contains a melodic line with dynamic markings *p*, *f*, and *decresc.*. Below it are four staves: two for Violins (VI and VII), one for Viola (Va), and one for Cello/Bass (C/B). The lower staves feature rhythmic accompaniment with dynamic markings such as *p*, *f*, *sf*, and *decresc.*.

Solo
cresc. *ad lib.* *tempo 1^{mo}* *cresc.*

This system contains six staves. The top staff is marked 'Solo' and contains a melodic line with dynamic markings *cresc.*, *ad lib.*, *tempo 1^{mo}*, and *cresc.*. Below it are five staves: two for Violins (VII and VII), one for Viola (Va), one for Cello, and one for Bass. The lower staves feature rhythmic accompaniment with dynamic markings such as *p*, *sf*, and *cresc.*.

III.

Rondo.

All. gre. to.

Flauto
Oboe
Fag.
Corni in F
Trombe in F
Timpani
Clar. solo
Violino
Viola
Cello
Basso

p Vello

SOLO

Violino
Viola
Cello/Basso

p

FL
OB
BSN
HORN
TRP
Timp
SOLO
Vf
Vcl
Va
Cb

BSN
SOLO
Vf
Vcl
Va
Cb

Fag. I

p Vello.

FL
OB
BSN
HN
Solo.
VI
VII
Va
Cb/B

FL
OB
BSN
HN
Solo.
VI
VII
Va
Cb/B

This page of a handwritten musical score is for a woodwind solo section. The staves are labeled on the left as follows: FL (Flute), OB (Oboe), BSN (Bassoon), Hrn (Horn), TRP (Trumpet), Timp (Timpani), Solo (Soloist), VI (Violin), Vn (Viola), Va (Violoncello), and CB (Contrabass). The score is written in a single system with four measures. The Soloist part is marked with a 'Solo' instruction and features a complex, rhythmic melodic line. The woodwind parts (FL, OB, BSN) have melodic lines with some rests. The string parts (VI, Vn, Va, CB) provide a harmonic accompaniment with rhythmic patterns. Dynamics such as *pp* and *f* are indicated throughout the score.

This page of a handwritten musical score, numbered 36, contains two systems of staves. The instruments listed on the left are: FL (Flute), OB (Oboe), BSN (Bassoon), HN (Horn), TRP (Trumpet), Timp. (Timpani), SOLO (Solo), VI (Violin I), VII (Violin II), Va (Viola), and CB (Cello). The score is written in a single system with a common time signature. The notation includes various note values, rests, and dynamic markings such as *p*, *cresc*, and *f*. In the second system, there are specific annotations: "Fag. solo" above the Bassoon staff, "Solo" above the Solo staff, and "Solo" above the Flute staff. The handwriting is clear and professional, typical of a composer's manuscript.

Handwritten musical score for a symphony orchestra, page 37. The score includes staves for Flute (Fl), Oboe (Ob), Bassoon (Bsn), Horn (Hrn), Trumpet (Trp), Timpani (Timp), Solo Violin (Solo VI), Violin I (VI), Violin II (VII), Viola (Va), and Cello (Cb). The music features dynamic markings such as *p*, *cresc*, and *f*, and includes a "Solo" section for the Violin I part. The score is written in a single system with multiple staves. The Solo VI part is marked with a double underline and the word "Solo". The Cello part ends with the word "Vello".

FL

OB

BSN I

BSN II

HN

TRP

Timp

SOLO

VI

VII

Va

C/B

p, *f*, *cresc*, *p.b.*

OB (Oboe I)
 BSN (Bassoon I)
 HN (Horn)
SOLO
 VI (Violin I)
 VII (Violin II)
 Va (Viola)
 C-B (Cello/Bass)

Fag I (Fagotto I)
 Cornoi. (Corni)

Musical score for the first system, measures 1-4. Includes dynamic markings such as *f*, *p*, *cresc.*, and *f*.

FLI (Flute I)
 OB (Oboe II)
 BSN (Bassoon II)
 HN (Horn)
SOLO
 VI (Violin I)
 VII (Violin II)
 Va (Viola)
 C-B (Cello/Bass)

Musical score for the second system, measures 5-8. Includes dynamic markings such as *f*, *p*, *sf*, *fp*, *cresc.*, and *dim.*

Handwritten musical score for page 44, featuring various instruments. The score is written on ten staves, with the following instruments labeled on the left:

- Fl (Flute)
- ob (Oboe)
- BSO (Bassoon)
- HN (Horn)
- TRP (Trumpet)
- Timp (Timpani)
- SOLO (Soloist)
- VI (Violin I)
- VI (Violin II)
- Va (Viola)
- C/B (Cello/Bass)

Key markings and dynamics include:

- p* (piano) at the start of the Flute staff.
- ppp* (pianissimo) for the Trombone staff.
- ppp* (pianissimo) for the Timpani staff.
- f* (forte) for the Soloist staff.
- f* (forte) for the Violin I and II staves.
- f* (forte) for the Viola and Cello/Bass staves.

The score includes various musical notations such as notes, rests, and dynamic markings. The Soloist part is particularly dense with rapid sixteenth-note passages. The bottom half of the page contains several empty staves.

Handwritten musical score for a symphony orchestra. The score is written on 12 staves, each labeled with an instrument or section:

- Fl** (Flute): Features a triplet of eighth notes in the first measure.
- Ob** (Oboe): Features a triplet of eighth notes in the first measure.
- Bsns** (Bassoons): Features a triplet of eighth notes in the first measure.
- Hrn** (Horn): Features a triplet of eighth notes in the first measure.
- Trp** (Trumpet): Features a triplet of eighth notes in the first measure.
- Tim** (Timpani): Features a triplet of eighth notes in the first measure.
- Solo** (Soloist): A single staff with a complex melodic line, including a long phrase with many sixteenth notes.
- VI** (Violin I): Features a triplet of eighth notes in the first measure.
- VII** (Violin II): Features a triplet of eighth notes in the first measure.
- Va** (Viola): Features a triplet of eighth notes in the first measure.
- C/B** (Cello/Double Bass): Features a triplet of eighth notes in the first measure.

The score includes various musical notations such as triplets, slurs, and dynamic markings like *f* (forte) and *p* (piano). The Soloist part is particularly detailed with many sixteenth notes and slurs.

FX

ob

I. BSN

II. BSN

HrN

Trp

CLAR

VI

VII

Va

ClB

dim

dim

dim

dim

dim

dim

dim

dim

ff

dim.

Fl

BSN

HrN

CLAR

VI

VII

Va

ClB

p

pp

p

p

p

pp

Handwritten musical score for a symphony orchestra, page 47. The score includes staves for Flute (Fl), Oboe (Ob), Bassoon (Bsn), Horn (Hu), Trumpet (Trp), Timpani (Timp), Clarinet Solo (CLAR SOLO), Violin I (VI), Violin II (VI), Viola (Va), and Cello/Double Bass (C/B). The music is written in a single system with various notes, rests, and dynamic markings such as 'p' and 'pp'. The score is arranged in a standard orchestral layout with woodwinds and brass at the top, followed by percussion, strings, and lower strings at the bottom. The notation includes various rhythmic values, slurs, and dynamic markings.

Handwritten musical score for a symphony orchestra, page 49. The score includes staves for Flute (Fl), Oboe (Ob), Bassoon (Bsn.), Horns I and II (Hns. I, II), Trumpet (Trp.), Timpani (Timp.), Violin I and II (VI, VII), Viola (Va.), and Cello/Bass (c/B). The music is written in a single system with various notes, rests, and dynamic markings like "poco f".

Handwritten musical score for a symphony orchestra. The score is written on a system of 12 staves. The instruments listed on the left are: Fl. (Flute), Ob. (Oboe), Bsn. (Bassoon), Hn. (Horn), Trp. (Trumpet), Timp. (Timpani), SOLO CLAR. (Solo Clarinet), VI (Violin I), VII (Violin II), Va (Viola), and c/B (Cello/Bass). The music is written in a common time signature (C) and features complex rhythmic patterns, including triplets and sixteenth notes. The score concludes with a double bar line and the word "Fine" written in cursive.

Fine