







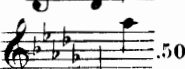

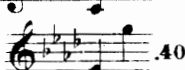
# Songs

BY

## ARTHUR FOOTE.

I'm wearing awa' . . . . .		30	Go, lovely Rose. . . . .		50
O, my love's like a red, red rose.		50	It was a lover and his lass. . . . .		30
The pleasant summer's come.		40	Milkmaid's Song ( <i>from "Queen Mary"</i> )		40
When icicles hang by the wall.		40	Love took me softly by the hand.		40
Love's philosophy. . . . .		40	Ho! pretty page. . . . .		60
If you become a nun, dear. . . . .		40	Ask me no m' re! . . . . .		40
Ojala! would she carry me! . . . . .		40	Elaine's Song "Sweet is true love." . . . . .		40

### Album of Songs, for Mezzo Soprano or Baritone (op. 26)

On the way to Kew. . . . .		50	Irish Folk-Song. . . . .		50
Love from o'er the sea. . . . .		40	The hawthorn wins the damask rose.		50
In Picardie. . . . .		40	Song of the Forge . . . . .		60
O swallow, swallow flying south.		50	And, if thou wilt, remember. . . . .		40
Love in her cold grave lies. . . . .		40			

The ARTHUR P. SCHMIDT Co.,  
 BOSTON, LEIPZIG, NEW YORK,  
 120 Boylston St. 8 West 40th St.



# LOVE FROM O'ER THE SEA.

The Poem by ERNEST FLOWER.

ARTHUR FOOTE.

Love

*Allegro assai.* (♩ = 104)

*cresc.*

Introduction for piano. Treble and bass clefs, 4/4 time signature. The piece begins with a piano (*p*) dynamic. The melody is in the right hand, and the accompaniment is in the left hand. The key signature has one sharp (F#). The introduction concludes with a *Ped.* (pedal) instruction and an asterisk.

*f con anima*

*espress.*

Laugh - - ing seas and smil - ing skies, All the world re - joi - ces;

Vocal line and piano accompaniment for the first line of lyrics. The vocal line is in the treble clef, and the piano accompaniment is in the bass clef. The piano part features a *fp* (fortissimo piano) dynamic. The lyrics are: "Laugh - - ing seas and smil - ing skies, All the world re - joi - ces;". The piano part includes several *Ped.* (pedal) instructions with asterisks.

*mf*

*cresc.*

O - pening leaf and bud - ding flower, Spring's a - wakening voi - ces:

Vocal line and piano accompaniment for the second line of lyrics. The vocal line is in the treble clef, and the piano accompaniment is in the bass clef. The piano part features a *p* (piano) dynamic. The lyrics are: "O - pening leaf and bud - ding flower, Spring's a - wakening voi - ces:". The piano part includes several *Ped.* (pedal) instructions with asterisks.

*mf*

*p*

*cresc.*

Life and love re - turn to earth, You came back to me, O wel - come,

Vocal line and piano accompaniment for the third line of lyrics. The vocal line is in the treble clef, and the piano accompaniment is in the bass clef. The piano part features a *fp* (fortissimo piano) dynamic. The lyrics are: "Life and love re - turn to earth, You came back to me, O wel - come,". The piano part includes several *Ped.* (pedal) instructions with asterisks.

4 *f cresc.* *ff*

wel - come to my heart a gain, Love from o'er the

*f cresc.* *ff*

Ped. Ped. Ped. \* Ped. \* Ped. Ped.

sea! *dolce* With the west wind in your hair,

*ritard.* *tempo dim.* *p*

Ped. \* Ped. \* Ped. \* Ped. \*

*rit. espress.*

Salt spray on your face, Well - ing tide and spreading sail

*pp poco rit.* *animato* *p*

Ped. \*

Hur-ry on a - pace Hur-ry on a -

Ped. Ped. Ped. Ped. \* Ped.

pace! For the win - ter has been long ———— And I wait, I

*f* *p*

Ped. \* Ped. Ped. Ped. Ped. \* Ped. Ped.

wait for thee, Oh! wel - come to my heart a - gain,

*cresc.* *f*

Ped. \* Ped. \* Ped. \*

Love ———— from o'er the sea! Love from

*poco sostenuto*

Ped. \* Ped. \*

o'er the sea!

Ped. \*

To Miss ANNA MILLER WOOD.  
**ON THE WAY TO KEW.**

The Poem by  
**WILLIAM ERNEST HENLEY.**

**ARTHUR FOOTE.**

**VOICE.** Moderato con moto. *doles.*

On the way to Kew, By the

**PIANO.** Moderato con moto. *p dolce e legato.*

riv-er old and gray, — Where in the Long A-go — We laughed and loitered so,

*pp* I met a ghost, to-day: Aghost that told of you, Aghost of

A.P.S. 3305-5 Copyright 1904, by Arthur P. Schmidt. London, Boosey & Co. To Miss Marguerite Dietrick.

**Ashes of Roses.**

The Poem is by Elaine Goodale (from "Apple Blossoms" by permission of G.P. Putnam's Sons).



**ARTHUR FOOTE, OP. 51, NO. 4.**

**Quietly.**

Soft on the sun-set sky Bright day-light clo-ses,

*segue*

Lea-ving, when light doth die, Pale hues that min-gling lie,

Ash-es of ro-ses. When love's warm sun is set,

Copyright 1903 by Arthur P. Schmidt. A. P. S. 3425d Complete Copy, 30 cents

To Mrs. SUSAN HAWLEY DAVIS

**REQUIEM**  
 (Under the wide and starry sky)



The Poem by  
**ROBERT LOUIS STEVENSON** 41

**ARTHUR FOOTE**

**Maestoso** (♩ = 66)

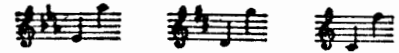
Un-der the wide and

star-ry sky, Dig—the grave and let me lie,

Glad—did I live and glad-ly die,— And I

41 From "Poems and Ballads" Copyright 1886, 1896 by Charles Scribner's Sons Copyright 1907 by Arthur P. Schmidt. Public Performances Permitted. International Copyright Secured. A.P.S. 7000-6 Complete Copy, 50 cents.

**Constancy.**



The Poem is Anonymous.

**ARTHUR FOOTE, Op. 55 No. 1.**

**Rather fast, with free diction.** (♩ = 120)

If the

ap-ple grows on the ap-ple-tree, And the

*legato*

*Ped. segue*

wild wind blows o'er the wild wood free, And the

Copyright 1903 by Arthur P. Schmidt. A. P. S. 7470

Complete Copy 50 cents