

OPUS - 83

SEIS PRELUDIOS

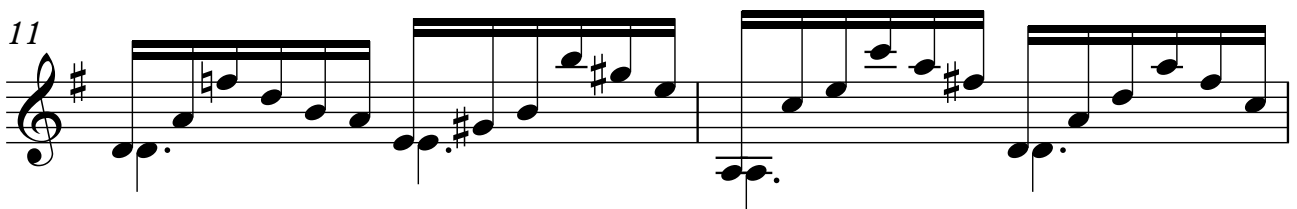
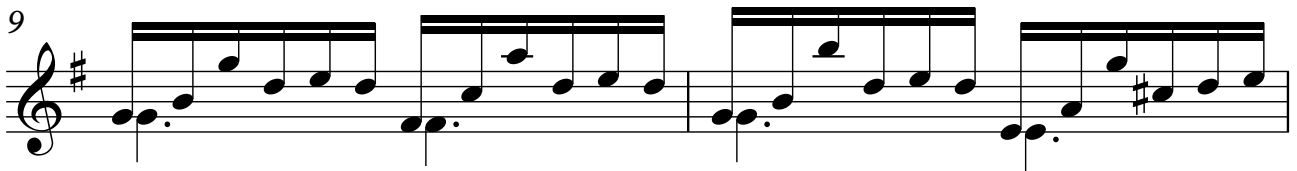
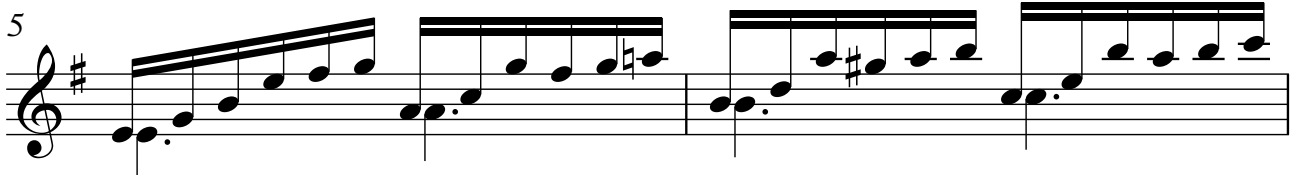
Número 4

TRANSCRIPCIÓN: LUIS ALVAREZ

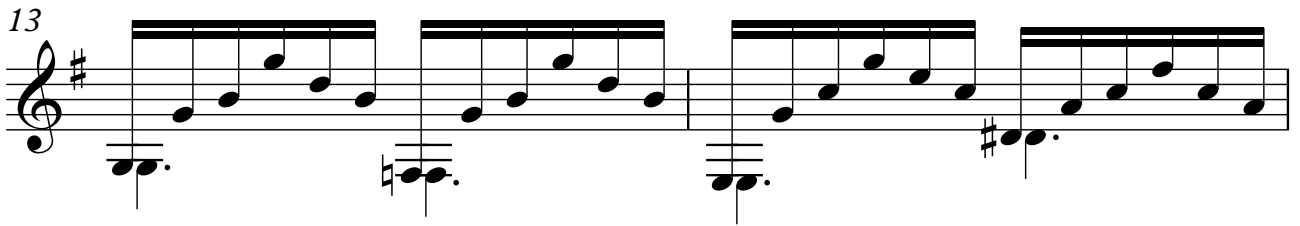
MAURO GIULIANI
(1781 - 1829)

ANDANTINO CON ESPRESSIONE

♩=60

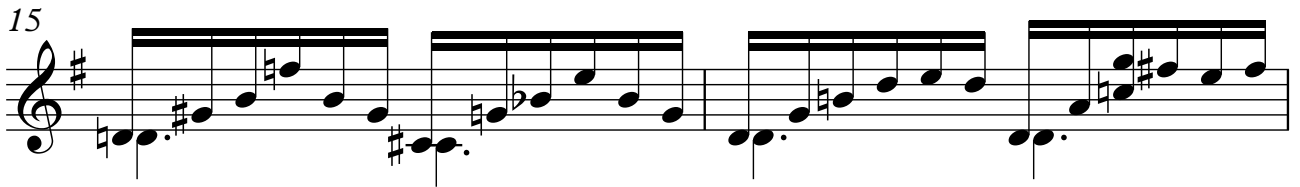


13



Musical notation for measures 13 and 14. The key signature is one sharp (F#). The melody consists of eighth-note patterns. Measure 13 has a treble clef and a sharp sign. The bass line consists of dotted half notes.

15



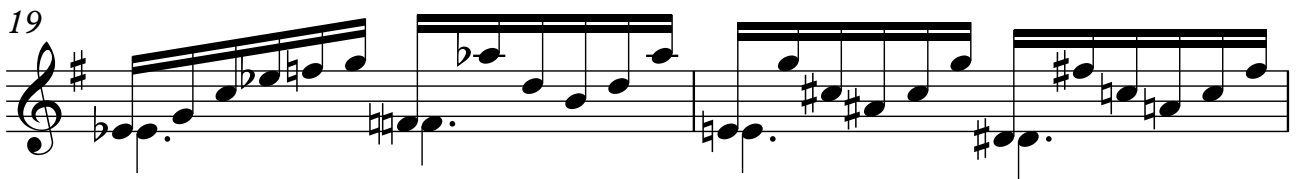
Musical notation for measures 15 and 16. The key signature is one sharp (F#). The melody continues with eighth-note patterns. Measure 15 has a treble clef and a sharp sign. The bass line consists of dotted half notes.

17




Musical notation for measures 17 and 18. The key signature is one sharp (F#). The melody features a rising eighth-note scale in measure 17. Measure 17 has a treble clef and a sharp sign. The bass line consists of dotted half notes.

19



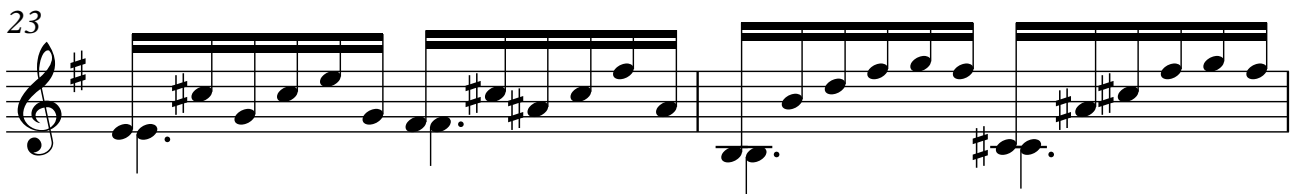
Musical notation for measures 19 and 20. The key signature is one sharp (F#). The melody continues with eighth-note patterns. Measure 19 has a treble clef and a sharp sign. The bass line consists of dotted half notes.

21



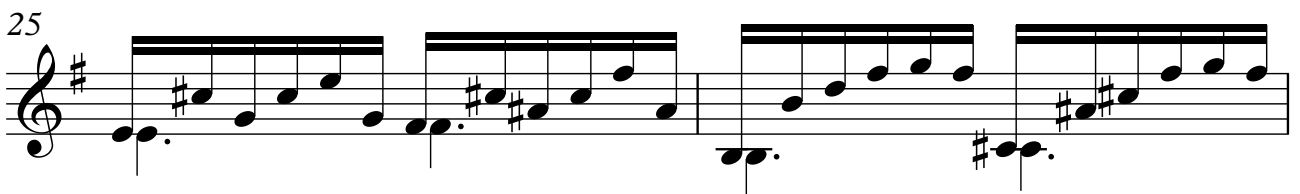
Musical notation for measures 21 and 22. The key signature is one sharp (F#). The melody continues with eighth-note patterns. Measure 21 has a treble clef and a sharp sign. The bass line consists of dotted half notes.

23



Musical notation for measures 23 and 24. The key signature is one sharp (F#). The melody continues with eighth-note patterns. Measure 23 has a treble clef and a sharp sign. The bass line consists of dotted half notes.

25



Musical notation for measures 25 and 26. The key signature is one sharp (F#). The melody continues with eighth-note patterns. Measure 25 has a treble clef and a sharp sign. The bass line consists of dotted half notes.

27

29

31

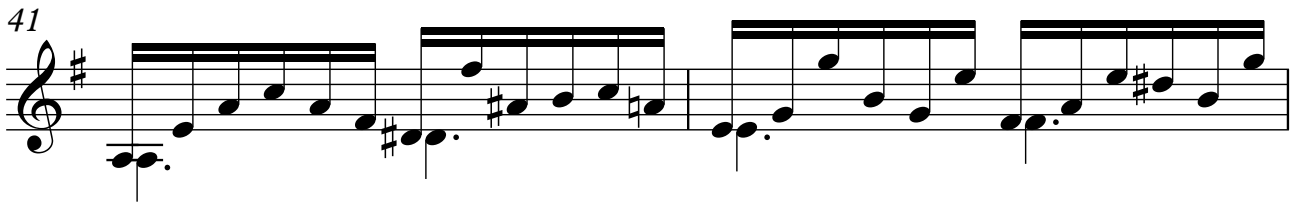
33

35

37

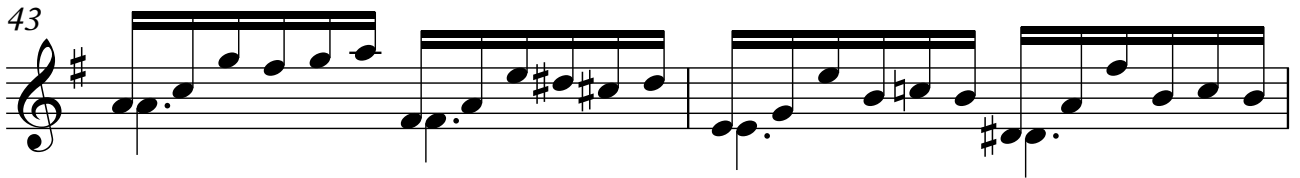
39

41



Musical notation for measures 41 and 42. The key signature is one sharp (F#). Measure 41 consists of two staves: the upper staff has a treble clef and contains a series of eighth notes, while the lower staff has a bass clef and contains a series of eighth notes. Measure 42 continues this pattern with similar rhythmic and melodic structures.

43



Musical notation for measures 43 and 44. The key signature is one sharp (F#). Measure 43 consists of two staves: the upper staff has a treble clef and contains a series of eighth notes, while the lower staff has a bass clef and contains a series of eighth notes. Measure 44 continues this pattern with similar rhythmic and melodic structures.

45



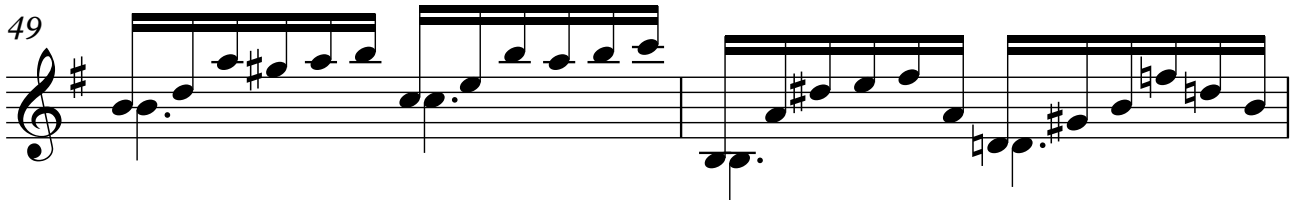
Musical notation for measures 45 and 46. The key signature is one sharp (F#). Measure 45 consists of two staves: the upper staff has a treble clef and contains a series of eighth notes, while the lower staff has a bass clef and contains a series of eighth notes. Measure 46 continues this pattern with similar rhythmic and melodic structures.

47



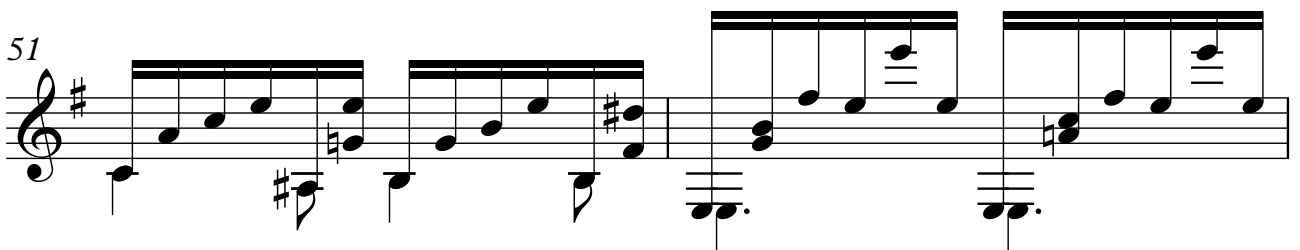
Musical notation for measures 47 and 48. The key signature is one sharp (F#). Measure 47 consists of two staves: the upper staff has a treble clef and contains a series of eighth notes, while the lower staff has a bass clef and contains a series of eighth notes. Measure 48 continues this pattern with similar rhythmic and melodic structures.

49



Musical notation for measures 49 and 50. The key signature is one sharp (F#). Measure 49 consists of two staves: the upper staff has a treble clef and contains a series of eighth notes, while the lower staff has a bass clef and contains a series of eighth notes. Measure 50 continues this pattern with similar rhythmic and melodic structures.

51



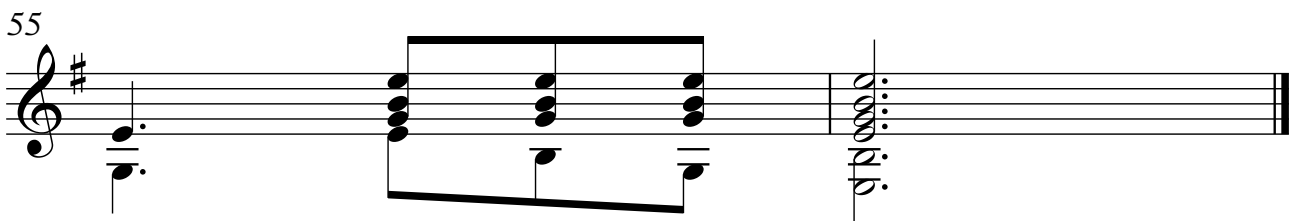
Musical notation for measures 51 and 52. The key signature is one sharp (F#). Measure 51 consists of two staves: the upper staff has a treble clef and contains a series of eighth notes, while the lower staff has a bass clef and contains a series of eighth notes. Measure 52 continues this pattern with similar rhythmic and melodic structures.

53



Musical notation for measures 53 and 54. The key signature is one sharp (F#). Measure 53 consists of two staves: the upper staff has a treble clef and contains a series of eighth notes, while the lower staff has a bass clef and contains a series of eighth notes. Measure 54 continues this pattern with similar rhythmic and melodic structures.

55



Musical notation for measures 55 and 56. The key signature is one sharp (F#). Measure 55 consists of two staves: the upper staff has a treble clef and contains a series of eighth notes, while the lower staff has a bass clef and contains a series of eighth notes. Measure 56 continues this pattern with similar rhythmic and melodic structures.