

OPUS - WOP10

MARCHAS OPERA LA VESTALE

Numero 3

TRANSCRIPCIÓN: LUIS ALVAREZ

MAURO GIULIANI

(1781 - 1829)

ALEGRO VIVACE

$\text{♩} = 160$

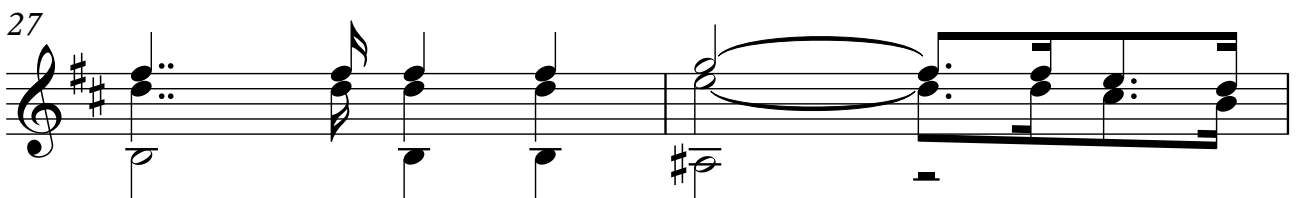
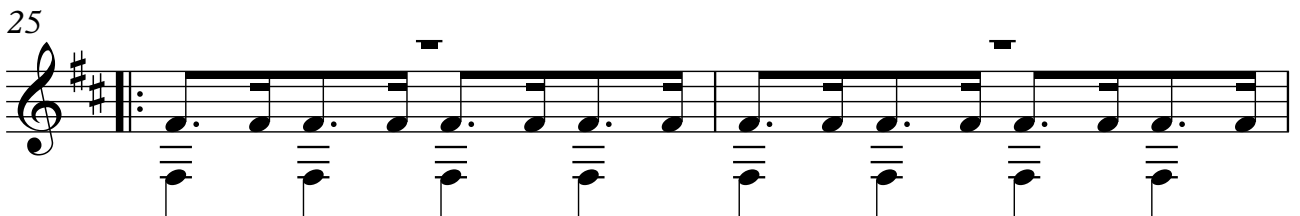
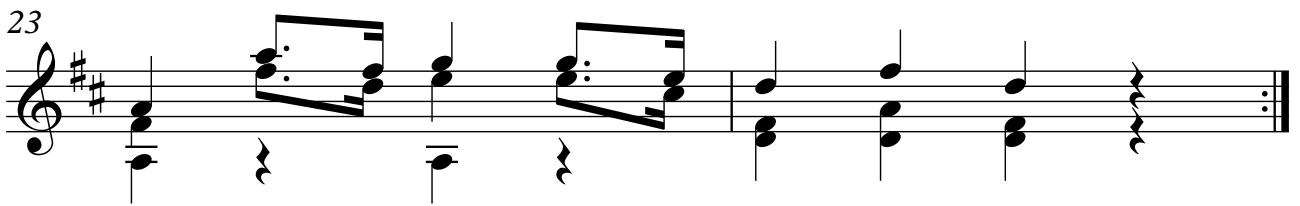
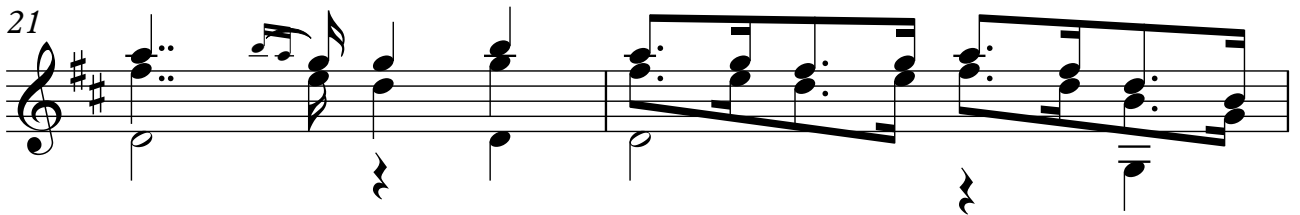
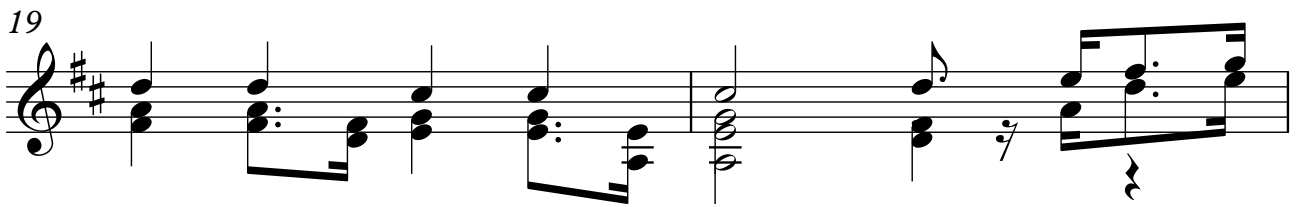
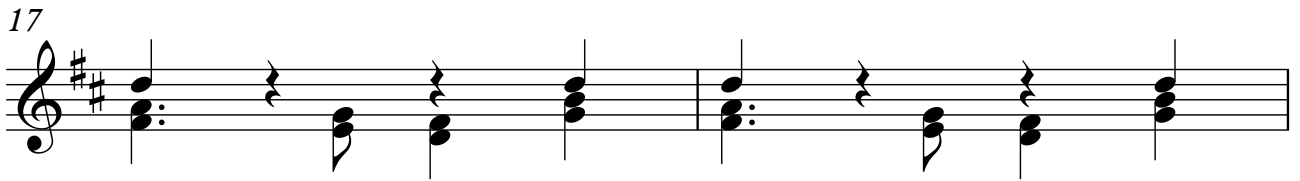
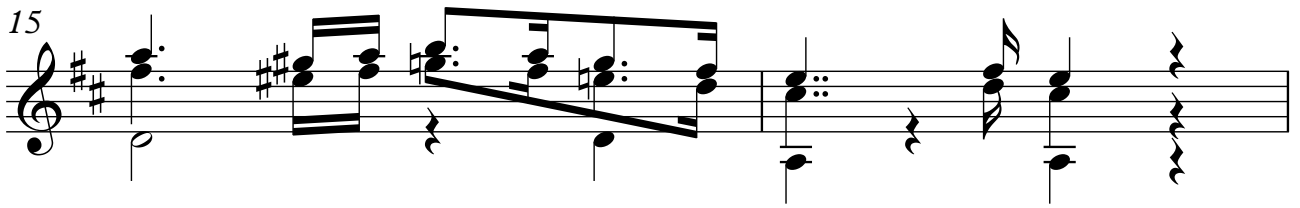
4

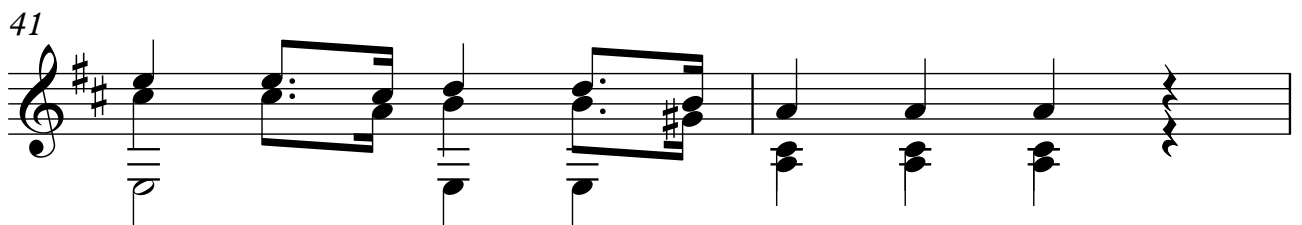
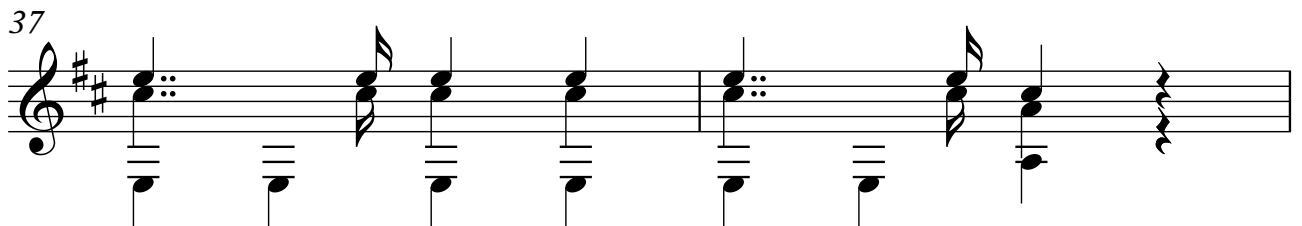
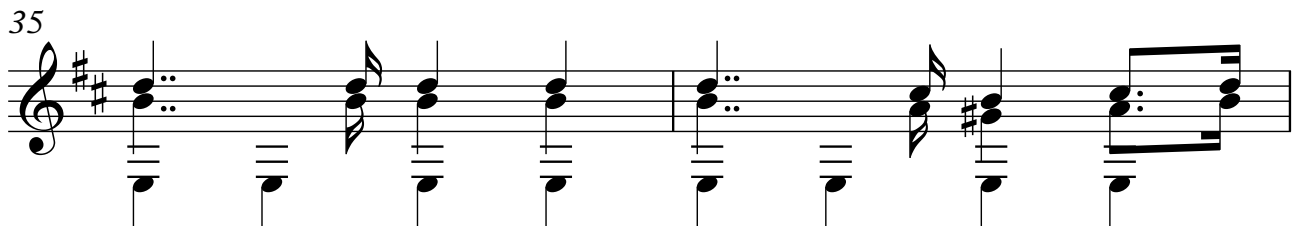
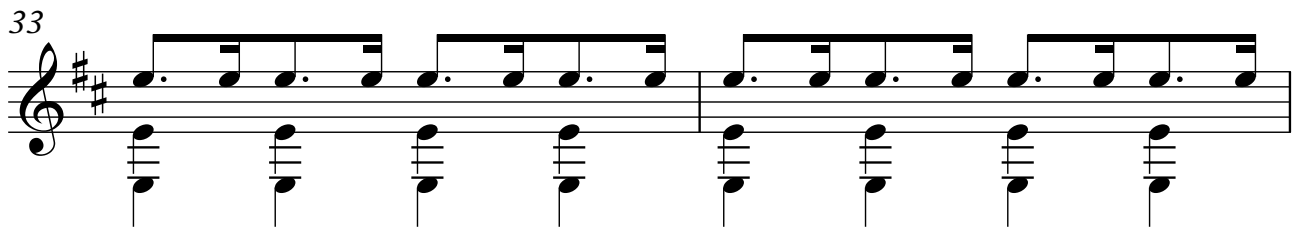
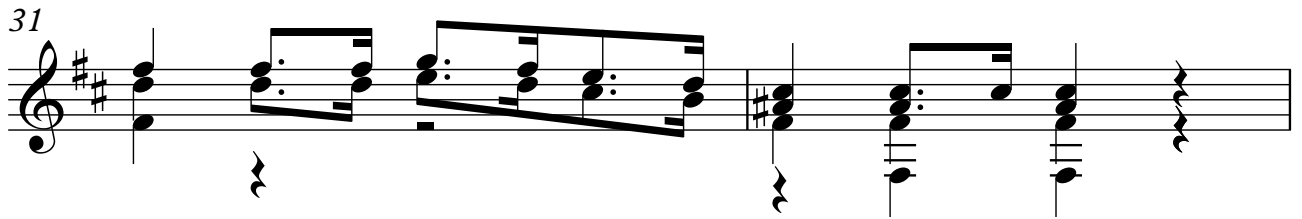
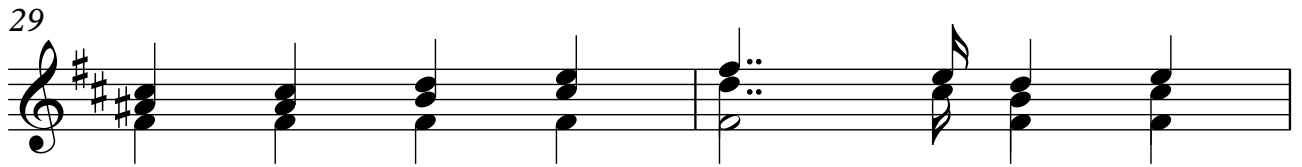
7

9

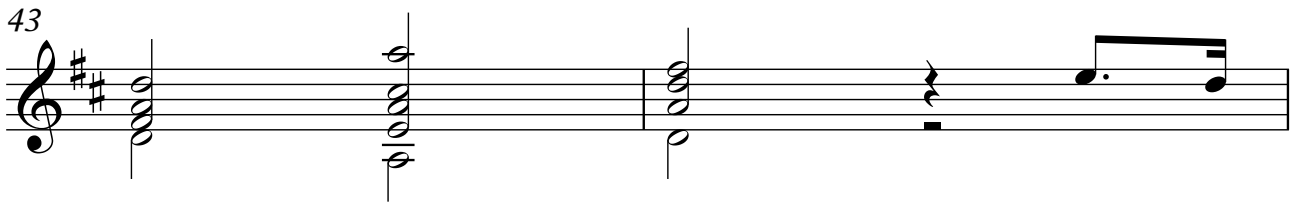
11

13



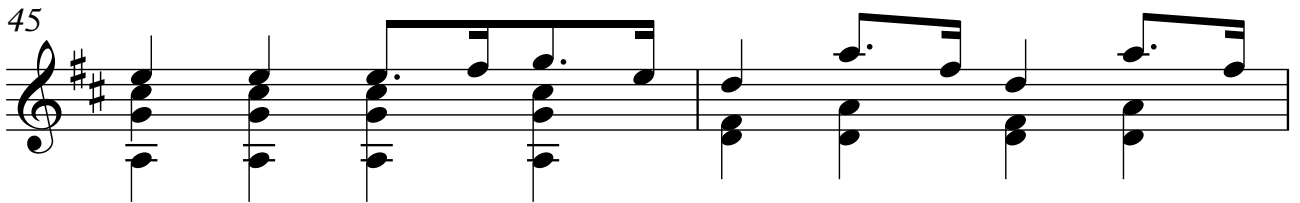


43



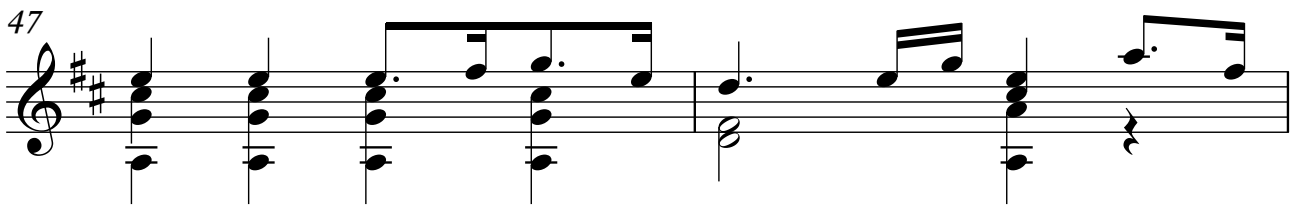
Musical notation for measures 43 and 44. The key signature is two sharps (F# and C#). Measure 43 features a treble clef with a whole note chord of F#4 and C#5, and a bass clef with a whole note chord of F#2 and C#3. Measure 44 features a treble clef with a whole note chord of F#4 and C#5, and a bass clef with a whole note chord of F#2 and C#3.

45



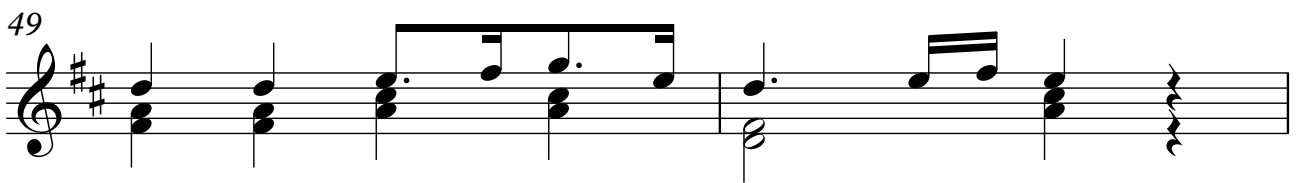
Musical notation for measures 45 and 46. The key signature is two sharps (F# and C#). Measure 45 features a treble clef with a whole note chord of F#4 and C#5, and a bass clef with a whole note chord of F#2 and C#3. Measure 46 features a treble clef with a whole note chord of F#4 and C#5, and a bass clef with a whole note chord of F#2 and C#3.

47



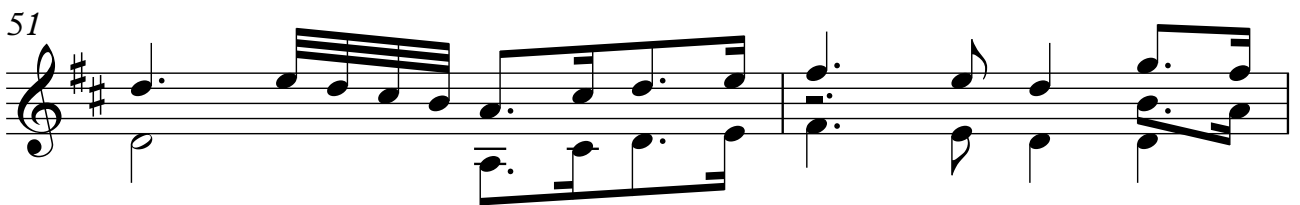
Musical notation for measures 47 and 48. The key signature is two sharps (F# and C#). Measure 47 features a treble clef with a whole note chord of F#4 and C#5, and a bass clef with a whole note chord of F#2 and C#3. Measure 48 features a treble clef with a whole note chord of F#4 and C#5, and a bass clef with a whole note chord of F#2 and C#3.

49



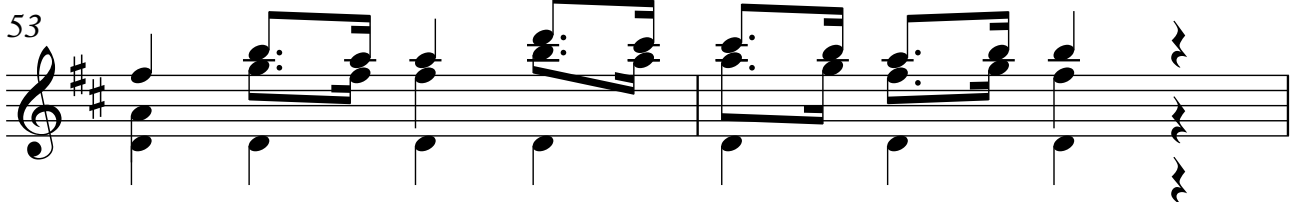
Musical notation for measures 49 and 50. The key signature is two sharps (F# and C#). Measure 49 features a treble clef with a whole note chord of F#4 and C#5, and a bass clef with a whole note chord of F#2 and C#3. Measure 50 features a treble clef with a whole note chord of F#4 and C#5, and a bass clef with a whole note chord of F#2 and C#3.

51



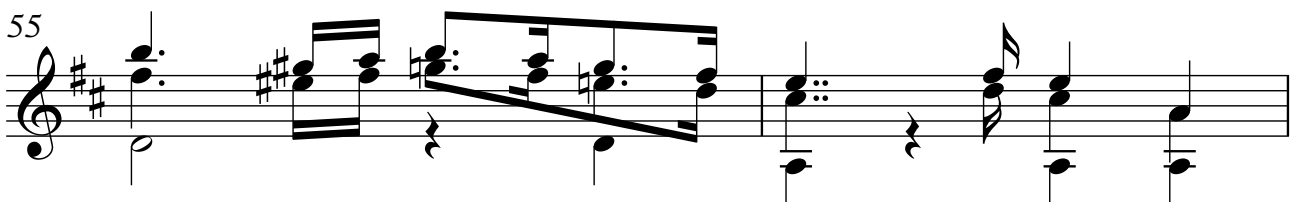
Musical notation for measures 51 and 52. The key signature is two sharps (F# and C#). Measure 51 features a treble clef with a whole note chord of F#4 and C#5, and a bass clef with a whole note chord of F#2 and C#3. Measure 52 features a treble clef with a whole note chord of F#4 and C#5, and a bass clef with a whole note chord of F#2 and C#3.

53



Musical notation for measures 53 and 54. The key signature is two sharps (F# and C#). Measure 53 features a treble clef with a whole note chord of F#4 and C#5, and a bass clef with a whole note chord of F#2 and C#3. Measure 54 features a treble clef with a whole note chord of F#4 and C#5, and a bass clef with a whole note chord of F#2 and C#3.

55



Musical notation for measures 55 and 56. The key signature is two sharps (F# and C#). Measure 55 features a treble clef with a whole note chord of F#4 and C#5, and a bass clef with a whole note chord of F#2 and C#3. Measure 56 features a treble clef with a whole note chord of F#4 and C#5, and a bass clef with a whole note chord of F#2 and C#3.

57

60

63

65

67

69

71