

# HWV - 396

## SONATA

### 5.- GABOTA

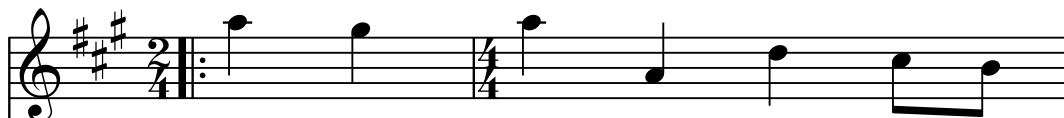
TRANSCRIPCIÓN: LUIS ALVAREZ      HANDEL (1685-1759)  
(GEORGE FRIEDRICH)

♩ = 140

**ALEGRO**

*tr* ~~~~~

**Guitarra 1**



**Guitarra 2**



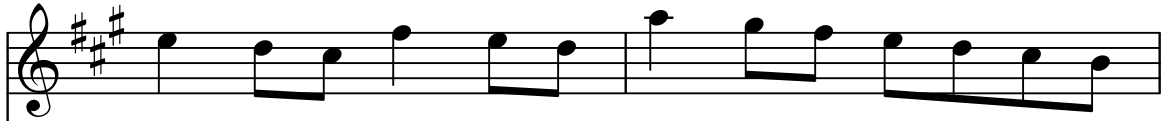
**Guitarra 3**



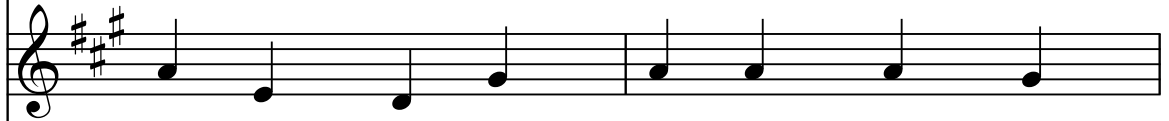
2

3

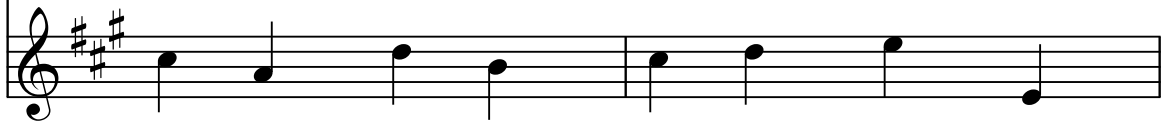
**Guit.1**



**Guit.2**

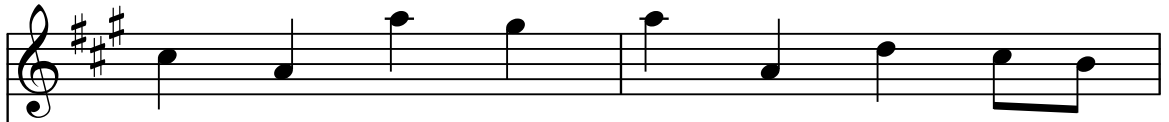


**Guit.3**



5

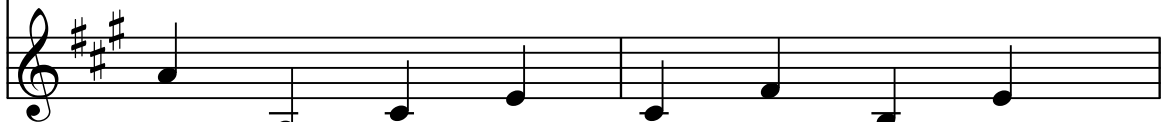
**Guit.1**



**Guit.2**



**Guit.3**



7

**Guit.1**



**Guit.2**



**Guit.3**





15 *trm*

**Guit.1**

**Guit.2**

**Guit.3**

This system contains measures 15 and 16. The key signature is three sharps (F#, C#, G#). Measure 15 starts with a treble clef and a key signature of three sharps. Guit.1 has a melodic line with eighth notes and a slur. Guit.2 has a bass line with quarter notes. Guit.3 has a bass line with quarter notes and eighth notes. Measure 16 continues the melodic line in Guit.1 and the bass lines in Guit.2 and Guit.3. A *trm* (trill) marking is above the final note of Guit.1 in measure 16.

17

**Guit.1**

**Guit.2**

**Guit.3**

This system contains measures 17 and 18. The key signature is three sharps. Measure 17 starts with a treble clef and a key signature of three sharps. Guit.1 has a melodic line with eighth notes and a slur, with a *tr* marking below the first note. Guit.2 has a bass line with quarter notes. Guit.3 has a bass line with quarter notes. Measure 18 continues the melodic line in Guit.1 and the bass lines in Guit.2 and Guit.3.

19 *trm*

**Guit.1**

**Guit.2**

**Guit.3**

This system contains measures 19 and 20. The key signature is three sharps. Measure 19 starts with a treble clef and a key signature of three sharps. Guit.1 has a melodic line with eighth notes and a slur, with a *trm* marking above the final note. Guit.2 has a bass line with quarter notes. Guit.3 has a bass line with quarter notes. Measure 20 shows a time signature change to 2/4. Guit.1 has a half note. Guit.2 has a half note. Guit.3 has a half note. Both measures end with repeat signs.