

A MI GUITARRA

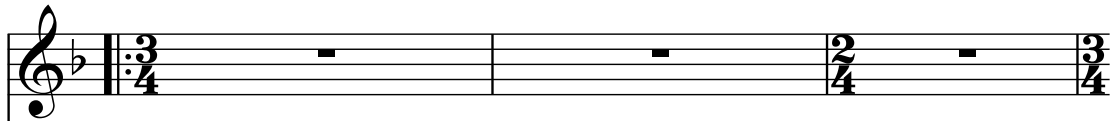
TRANSCRIPCIÓN: LUIS ALVAREZ

IPARRAGUIRRE

(1879-1925)

♩ = 100

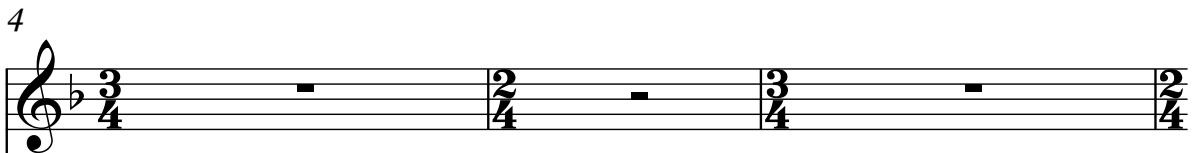
Violín



Guitarra



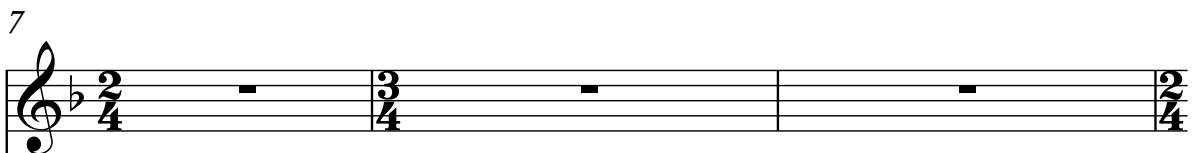
Vln.



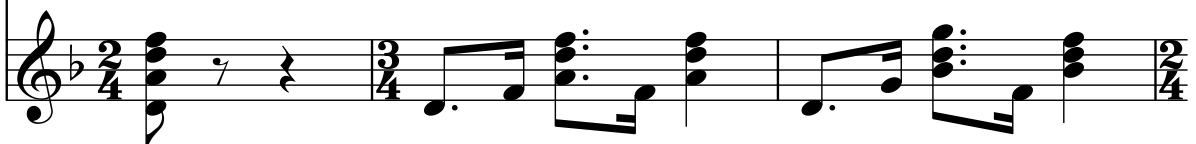
Guit.



Vln.



Guit.



2

10

Vln.

Guit.

13

Vln.

Guit.

16

Vln.

Guit.

19

Vln.

Guit.

22

Vln.

Guit.

Measures 22-24: Violin part features a melodic line with eighth and quarter notes, including rests. The guitar part consists of a rhythmic accompaniment with chords and single notes.

25

Vln.

Guit.

Measures 25-27: Violin part continues with a melodic line. The guitar part maintains the rhythmic accompaniment with chords and single notes.

28

Vln.

Guit.

Measures 28-30: Violin part includes a change in time signature from 4/4 to 3/4 and then to 6/8. The guitar part follows these changes with corresponding rhythmic patterns.

31

Vln.

Guit.

Measures 31-33: Violin part concludes with a melodic phrase. The guitar part provides a final accompaniment with chords and single notes, ending with a double bar line and a 3/4 time signature.

34

Vln.

Guit.

Measures 34-36. Violin part has rests. Guitar part has eighth notes and chords in 3/4, 2/4, and 3/4 time signatures.

37

Vln.

Guit.

Measures 37-39. Violin part has rests. Guitar part has eighth notes and chords in 3/4, 2/4, 3/4, and 2/4 time signatures.

40

Vln.

Guit.

Measures 40-42. Violin part has rests. Guitar part has eighth notes and chords in 2/4, 3/4, and 2/4 time signatures.

43

Vln.

Guit.

Measures 43-45. Violin part has rests. Guitar part has eighth notes and chords in 2/4, 3/4, 2/4, and 3/4 time signatures.

46

Vln.

Guit.

Detailed description: This system contains measures 46, 47, and 48. The Violin part (Vln.) is in treble clef with a key signature of one flat and a 3/4 time signature. It features a melodic line with eighth and quarter notes, including a sharp sign on the final note of the third measure. The Guitar part (Guit.) is in treble clef with the same key signature and time signature, playing a rhythmic accompaniment of eighth and quarter notes with chordal textures.

49

Vln.

Guit.

Detailed description: This system contains measures 49, 50, and 51. The Violin part (Vln.) continues the melodic line with quarter and eighth notes, including a sharp sign on the second note of the second measure. The Guitar part (Guit.) maintains the rhythmic accompaniment with eighth and quarter notes and chordal textures.

52

Vln.

Guit.

Detailed description: This system contains measures 52, 53, and 54. The Violin part (Vln.) includes a sharp sign on the second note of the first measure and a 6/8 time signature change starting in the second measure. The Guitar part (Guit.) follows the time signature change and includes a sharp sign on the second note of the first measure. Both parts end with a double bar line.

55

Vln.

Guit.

Detailed description: This system contains measures 55, 56, and 57. The Violin part (Vln.) features a sharp sign on the second note of the first measure and ends with a double bar line. The Guitar part (Guit.) includes a sharp sign on the second note of the first measure and ends with a double bar line.