

# CAPRICHIO N° 32

## OP-20

ARMONIZADO POR LUIS ALVAREZ

LEGNANI

♩=50

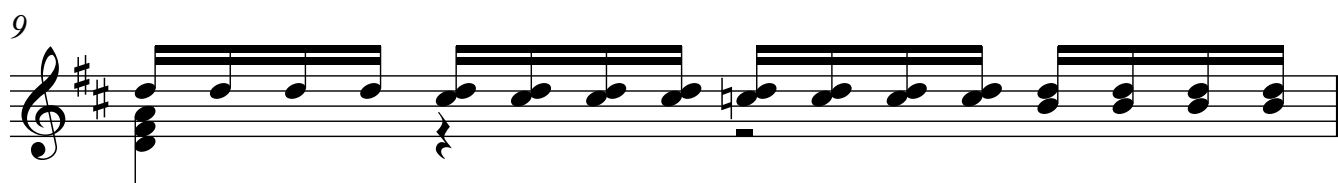
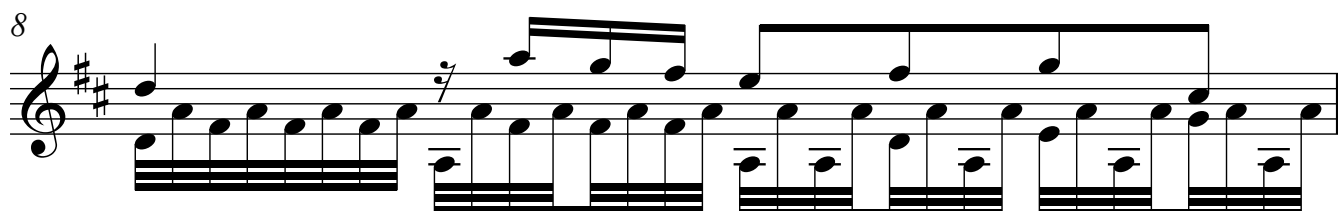
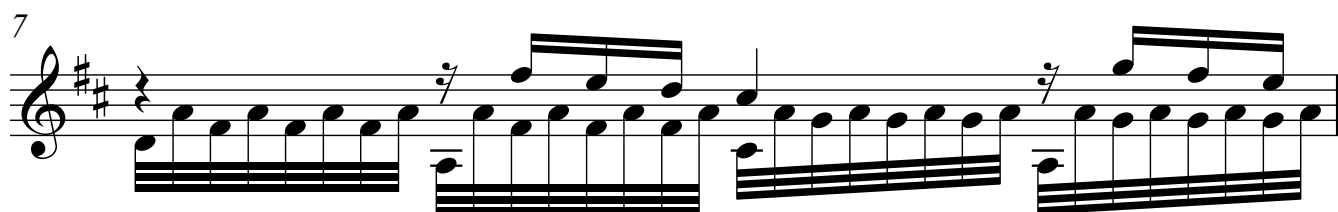
Largo

First musical staff, measures 1-4. Treble clef, key signature of three flats (B-flat, E-flat, A-flat), 4/4 time signature. The melody consists of eighth notes with a descending contour. The bass line features chords and rests.

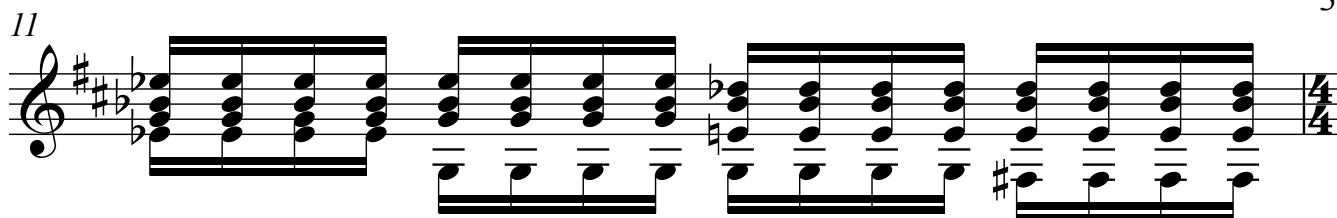
Second musical staff, measures 5-8. Continuation of the melody and bass line from the first staff.

Third musical staff, measures 9-12. Continuation of the melody and bass line from the first staff.

Fourth musical staff, measures 13-16. Continuation of the melody and bass line from the first staff.

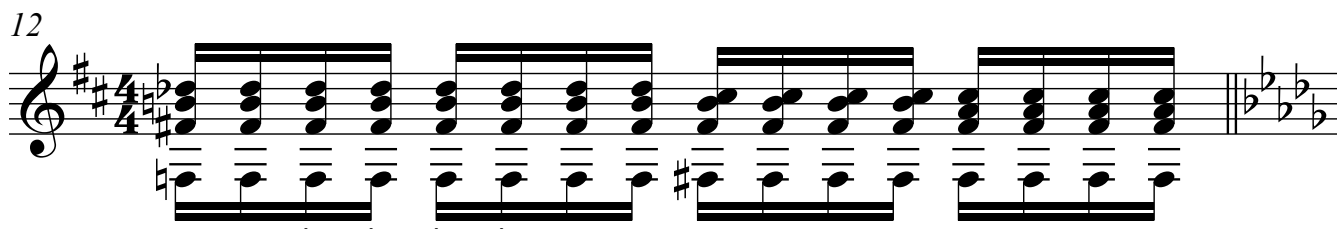


11



Musical notation for measure 11, featuring a treble clef, a key signature of one sharp (F#) and one flat (Bb), and a 4/4 time signature. The notation consists of a series of chords and eighth notes, with a double bar line at the end of the measure.

12



Musical notation for measure 12, featuring a treble clef, a key signature of one sharp (F#) and one flat (Bb), and a 4/4 time signature. The notation consists of a series of chords and eighth notes, with a double bar line at the end of the measure.

13



Musical notation for measure 13, featuring a treble clef, a key signature of one sharp (F#) and one flat (Bb), and a 4/4 time signature. The notation consists of a series of chords and eighth notes, with a double bar line at the end of the measure.

14



Musical notation for measure 14, featuring a treble clef, a key signature of one sharp (F#) and one flat (Bb), and a 4/4 time signature. The notation consists of a series of chords and eighth notes, with a double bar line at the end of the measure.

15



Musical notation for measure 15, featuring a treble clef, a key signature of one sharp (F#) and one flat (Bb), and a 4/4 time signature. The notation consists of a series of chords and eighth notes, with a double bar line at the end of the measure.