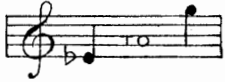
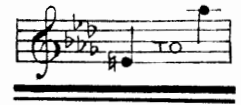


V

Nº 1 IN C



Nº 2 IN D<sup>b</sup>



# HOW DELICIOUS IS THE WINNING SONG

THE WORDS BY

THOMAS CAMPBELL

The Music by

**A. L.**

---

PRICE 2/ NET

---

**BOOSEY & ©**  
295, REGENT STREET, LONDON, W.  
AND  
9, EAST SEVENTEENTH STREET NEW YORK.

THIS SONG MAY BE SUNG IN PUBLIC WITHOUT FEE OR LICENSE  
THE PUBLIC PERFORMANCE OF ANY PARODIED VERSION, HOWEVER, IS STRICTLY PROHIBITED.

COPYRIGHT 1897 BY BOOSEY & C<sup>o</sup>

## HOW DELICIOUS IS THE WINNING.



How delicious is the winning  
Of a kiss at Love's beginning,  
When two mutual hearts are sighing  
For the knot there's no untying!

Yet remember, midst your wooing,  
Love has bliss, but Love has ruing;  
Other smiles may make you fickle,  
Tears for other charms may trickle.

Love he comes and Love he tarries,  
Just as fate or fancy carries,  
Longest stays when sorest chidden,  
Laughs and flies when pressed or bidden.

Bind the sea to slumber stilly,  
Bind the odour to the Lily;  
Bind the Aspen ne'er to quiver,  
Then bind Love to last for ever.

Love's a fire that needs renewal  
Of fresh beauty for its fuel;  
Love's wing droops when caged or captured,  
Only free he soars enraptured.

Can you keep the bee from ranging?  
Or the ring-dove's neck from changing?  
No! nor fettered Love from dying  
In the knot there's no untying!

THOMAS CAMPBELL.

*In setting the above the Composer has, for musical purposes, varied  
the sequence of the verses and altered two lines.*

# How delicious is the winning.

Words by  
THOMAS CAMPBELL.

Music by  
A. L.

*Allegretto.*

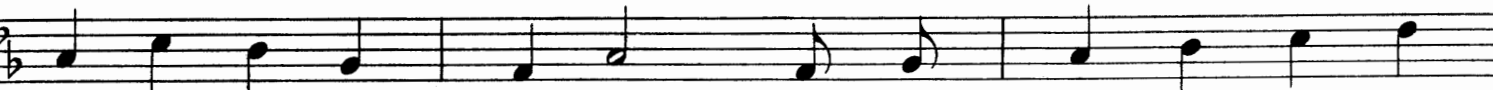
Voice. 

Piano. 



How de - li - cious is the win - ning Of a





kiss at love's be - gin - ning, When two mut - ual hearts are





sigh - ing For the knot there's no un - ty - ing; Yet re -



- mem - ber, midst your woo - ing, Love has bliss but love has ru - ing, Love has

joy, but love has sor - row, Smiles to day, but weeps to mor - row.

Interlude for piano accompaniment.

*dolce: espress:*  
Bind the sea to slum - ber stil - ly, Bind the

o - dour to the lil - y; Bind the as - pen ne'er to

quiv - er, Then bind love to last for ev - er. Love's a *animandosi.*

fire that needs re - new - al Of fresh beau - ty for its

fu - el, Love's wing droops when caged or capt - ur'd, On - ly

*rit ad lib.*

free he soars en - rap - tur'd!

*con brio.*

*più lento.*

Love he

*piu lento.* *p*

*p impressively.*

comes and love he tar - ries, Just as fate..... or fancy carries, Longest

*pp*

*rit:*

stays.... when sorest chid-den, Laughs and flies..... when press'd or bid - den. Can you

*rit:*

*piu presto.* *cresc.* *con anima.*

keep the bee from rang-ing? Or the ring-dove's neck from changing? No! nor

*piu presto.* *cresc.* *f con anima.*

*con Ad.*

fet-ter'd love from dy-ing In the knot there's no.... un - ty - ing! How de-

*con anima cresc:* *sempre cresc:*

-lic-ious is..... the winning Of a kiss at love's be-gin-ning, At

*con brio.*

*f* *rit: ad lib. e molto espressivo.*

love's..... At love's be-gin-ning.

*f marcato.* *ppp*

How delicious is the winning.

# BOOSEY & CO.'S New and Standard Songs and Ballads.

PRICE TWO SHILLINGS EACH NET.

The Compass of the first Key only is given: from this the Compass of the other Keys can be readily found.

Song Title	Compass of 1st key.	Sung by	Song Title	Compass of 1st key.	Sung by	Song Title	Compass of 1st Key.	Sung by
<b>STEPHEN ADAMS</b> THE CUP OF LIFE, E $\flat$ , F, G & A $\flat$ IDLE WORDS, C, D $\flat$ and E $\flat$ THE YOUNG ROYALIST, B $\flat$ , C, and D .. THE MAID OF MALABAR, D, E $\flat$ and F .. THE LIGHT OF THE WORLD, E $\flat$ , F, G, and A $\flat$ , New Edition... FRISA, C, D, E $\flat$ and F .. GOODBYE JACK! F, G and A .. THE FORGE AND THE BELL, E $\flat$ and F .. TO THE FRONT, D, E $\flat$ and F .. THE VALLEY BY THE SEA, C, D $\flat$ , E $\flat$ and F .. AGNES, MARIE, E $\flat$ , F, G and A $\flat$ THE HOLY CITY, A $\flat$ , B $\flat$ , C, and D .. Also with German Words, in B $\flat$ THE ISLAND OF DREAMS, C, D, E $\flat$ , and F .. WHAT AM I, LOVE, WITHOUT THEE? G and B $\flat$ .. BY THE FOUNTAIN, E $\flat$ , F and G .. THIS WORK-A-DAY WORLD, A $\flat$ and B $\flat$ .. MONA, C, E $\flat$ , E and F .. THE STAR OF BETHLEHEM, E $\flat$ , F, G and A $\flat$ .. THEY ALL LOVE JACK, D, E $\flat$ and F .. THE GARONNE, E $\flat$ , F, G and A $\flat$ THE MAID OF THE MILL, E $\flat$ , F, G and A $\flat$ .. THE OWL, B $\flat$ , C and E $\flat$ .. THE ROMAN LASS, A $\flat$ , B $\flat$ and C .. THE LITTLE HERO, B $\flat$ , C and D .. CHILDREN OF THE CITY, D and F .. GOOD COMPANY, E $\flat$ , F, G and A $\flat$ .. THE MIDSHIPMATE, B $\flat$ , C and D .. NANCY LEE, C, D and E $\flat$ .. THE TAR'S FAREWELL, D and E $\flat$ THE BLUE ALSATIAN MOUNTAINS, D, E $\flat$ and F ..	D to E $\flat$ G to E A to E $\flat$ D to E A to D C to E $\flat$ A to D B $\flat$ to E $\flat$ A to D G to C B $\flat$ to E $\flat$ C to E $\flat$ D to E B $\flat$ to E $\flat$ A $\flat$ to E $\flat$ C to E B $\flat$ to E $\flat$ A $\flat$ to E $\flat$ C to E B $\flat$ to E $\flat$ A to D E $\flat$ to E $\flat$ A $\flat$ to E $\flat$ C to E B $\flat$ to E $\flat$ A to D E $\flat$ to E $\flat$ A $\flat$ to E $\flat$ G to D B to E D to F $\sharp$	<i>Mr. Edward Lloyd</i> <i>Miss Clara Butt</i> <i>Mr. Andrew Black</i> <i>Mr. Jack Robertson</i> <i>Mr. Andrew Black</i> <i>Mr. Edward Lloyd</i> <i>Mr. Edward Lloyd</i> <i>Mr. Maybrick</i> <i>Miss Clara Butt</i> <i>Mr. Maybrick</i> <i>Mdme. Belle Cole</i> <i>Mr. Edward Lloyd</i> <i>Mr. Edward Lloyd</i> <i>Mr. Maybrick</i> <i>Mdme. Belle Cole</i> <i>Mr. Edward Lloyd</i> <i>Mr. Edward Lloyd</i> <i>Mr. Maybrick</i> <i>Mr. Edward Lloyd</i> <i>Mr. Maybrick</i> <i>Mr. Edward Lloyd</i> <i>Mr. Maybrick</i> <i>Mr. Edward Lloyd</i> <i>Mr. Maybrick</i> <i>Mr. Edward Lloyd</i> <i>Mr. Maybrick</i> <i>Mr. Edward Lloyd</i> <i>Mr. Maybrick</i> <i>Mr. Edward Lloyd</i> <i>Mr. Maybrick</i> <i>Mr. Edward Lloyd</i> <i>Mr. Maybrick</i> <i>Mr. Edward Lloyd</i> <i>Mr. Maybrick</i> <i>Mr. Edward Lloyd</i> <i>Mr. Maybrick</i> <i>Mr. Edward Lloyd</i>	<b>A. SCOTT GATTY</b> WINTER, D, E and F .. THE GALLANTS OF ENGLAND, A $\flat$ and B $\flat$ .. APART, E $\flat$ .. ROTHERSAY BAY, E $\flat$ .. PLANTATION SONGS, Vols. 1, 2 and 3 (Six Songs in each), 2/- each <b>EDWARD GERMAN</b> WHO'LL BUY MY LAVENDER, C, D and E .. IN THE MERRY MAY-TIME, G and A $\flat$ .. <b>G. PERCY HADDOCK</b> THE SOUL'S AWAKENING, E and G .. <b>BATTISON HAYNES</b> OFF TO PHILADELPHIA, C and D .. <b>G. HENSCHEL</b> SPRING, F and G .. <b>AMY E. HORROCKS</b> THE BIRD AND THE ROSE, E $\flat$ and F .. THE NIGHTINGALE, C and E $\flat$ .. <b>A. L.</b> DORILLA (La Superbetta), E $\flat$ .. WHEN TWO THAT LOVE ARE PARTED, D $\flat$ and D .. HEAR ME! YE WINDS AND WAVES, G .. WHEN LOVE IS KIND, F and A $\flat$ .. <b>FRANK LAMBERT.</b> BEYOND THE VEIL, F, G $\flat$ , G & A .. <b>LIZA LEHMANN</b> THE MINUET, C & D .. YOU AND I (Cradle Song), B $\flat$ , C and D .. THE CASTILIAN MAID, C and E (minor) .. <b>S. LIDDLE</b> THE MOTH & THE MAIDEN, F & G .. THE GAY GORDONS, B $\flat$ & C .. ABIDE WITH ME, D $\flat$ , and E .. I LOVE THREE LIFE, D $\flat$ , D and E $\flat$ .. HOME SONG, D $\flat$ , E $\flat$ and F .. <b>F. N. LÖHR</b> MARGARITA, B $\flat$ , C and E $\flat$ .. <b>A. C. MACKENZIE</b> A DEAR WIFE, E $\flat$ and G .. <b>THEO. MARZIALS</b> GO, PRETTY ROSE (Duet), F and G .. THE RIVER OF YEARS, E $\flat$ , F and G .. ASK NOTHING MORE, D, E $\flat$ and F .. NEVER TO KNOW, F, G and A $\flat$ .. LEAVING YET LOVING, E $\flat$ and F .. THE MILLER AND THE MAID, D, E $\flat$ , and F .. A SUMMER SHOWER, E $\flat$ and F .. TWICKENHAM FERRY, E $\flat$ and F .. THREE SAILOR BOYS, A $\flat$ and B $\flat$ .. <b>CONSTANCE MAUD</b> A LIFE LESSON, B $\flat$ and C .. <b>FRANK L. MOIR.</b> LOVE IS THE STAR, E $\flat$ , F & A $\flat$ .. DOWN THE VALE, C, E $\flat$ and F .. THE SONGS THE CHILDREN SING, D, E $\flat$ and F .. GOLDEN HARVEST, D, E and F .. A LARK'S FLIGHT, D, F and G .. CHILDREN ASLEEP, D and F .. ONLY ONCE MORE, E $\flat$ , F and G .. <b>J. L. MOLLOY</b> THE CARNIVAL, C, D $\flat$ and E $\flat$ .. HOME, DEARIE, HOME, D, E $\flat$ and F .. LIGHTHOUSE KEEPER, C and D .. THE LADS IN RED, E $\flat$ and F .. THE THREE BEGGARS, C, D and E .. OUR LAST WALTZ, B $\flat$ , C and D .. LOVE'S OLD SWEET SONG, E $\flat$ , F and G .. TO-MORROW WILL BE FRIDAY, E $\flat$ and F .. THE BOATSWAIN'S STORY, C, D and E $\flat$ .. THE KERRY DANCE, E $\flat$ and F .. LONDON BRIDGE, D and E .. DARBY AND JOAN, F, G and A .. <b>ALICIA A. NEEDHAM</b> THE STILE IN THE LANE, G, A $\flat$ & B $\flat$ .. I DREAM OF THEE, C & D .. HUSHEEN, B $\flat$ , C and D .. LITTLE BLUE PIGEON, E $\flat$ and G $\flat$ ..	A to D C to E $\flat$ C to F D to E $\flat$ C to E C $\sharp$ to E B to E G to D E $\flat$ to F $\sharp$ B $\flat$ to E $\flat$ A to E D to F A $\flat$ to E $\flat$ G to E $\flat$ C to D A to D C to G D to F G to E $\flat$ C to F B $\flat$ to D A $\flat$ to F A $\flat$ to E A $\flat$ to E $\flat$ C to E $\flat$ B to D B to D C to F C to E $\flat$ B to D D to E $\flat$ B $\flat$ to E $\flat$ E $\flat$ to E $\flat$ B $\flat$ to E $\flat$ A to C A to C B to D A to D A to D B to D C to D C to D C to D C to E $\flat$ A to D B to D C to F A to D C to C	<i>Mdme. Alice Gomez</i> <i>Signor Foli</i> <i>Miss Evan. Florence</i> <i>Miss Evan. Florence</i> <i>Mdme. Nikita</i> <i>Mr. Plunket Greene</i> <i>Miss Evan. Florence</i> <i>Miss Clara Butt</i> <i>Miss Liza Lehmann</i> <i>Miss Ada Crossley</i> <i>Miss Evan. Florence</i> <i>Miss Louise Dale</i> <i>Miss Liza Lehmann</i> <i>Miss Evan. Florence</i> <i>Mr. Andrew Black</i> <i>Miss Clara Butt</i> <i>Miss Clara Butt</i> <i>Miss Ada Crossley</i> <i>Mr. Edward Lloyd</i> <i>Mr. Edward Lloyd</i> <i>Miss Clara Butt</i> <i>Mr. Barringt. Foote</i> <i>Miss Eleanor Rees</i> <i>Mr. Barringt. Foote</i> <i>Miss Damian</i> <i>Mr. Barringt. Foote</i> <i>Mrs. Mary Davies</i> <i>Mrs. Mary Davies</i> <i>Mrs. Mary Davies</i> <i>Mr. Santley</i> <i>Mdme. Ant. Sterling</i> <i>Miss Jessie King</i> <i>Mdme. Ant. Sterling</i> <i>Mdme. Valleria</i> <i>Mdme. Ant. Sterling</i> <i>Mr. Charles Chilley</i> <i>Mdme. Ant. Sterling</i> <i>Mr. Barringt. Foote</i> <i>Mr. Barringt. Foote</i> <i>Mdme. Trebelli</i> <i>Mdme. Ant. Sterling</i> <i>Mr. Barringt. Foote</i> <i>Mr. Santley</i> <i>Mdme. Sherrington</i> <i>Mr. Maybrick</i> <i>Mdme. Ant. Sterling</i> <i>A to D</i> <i>D to G</i> <i>B<math>\flat</math> to D</i> <i>B<math>\flat</math> to E<math>\flat</math></i>	<b>ALICIA A. NEEDHAM-Contd.</b> WHO CARRIES THE GUN? F and G .. THE DONOVANS, A $\flat$ and B $\flat$ .. <b>ERNEST NEWTON</b> AILSA MINE, C, D and F .. <b>C. PINSUTI</b> THE LAST WATCH, D, F and G .. <b>PRINCE PONIATOWSKI</b> YEOMAN'S WEDDING SONG, G, A $\flat$ and B $\flat$ .. <b>SAINTON-DOLBY, Mme.</b> OUT ON THE ROCKS, D $\flat$ and E $\flat$ .. <b>J. SARGEANT</b> BLOW, BLOW, THOU WINTER WIND, B, C and D .. <b>ARTHUR SOMERVELL.</b> ON A SUMMER MORNING, B $\flat$ , C & D .. <b>ARTHUR SULLIVAN</b> THE LOST CHORD, E $\flat$ , F, G, and A $\flat$ .. MY DEAREST HEART, A $\flat$ and B $\flat$ .. ST. AGNES' EVE, C and E .. LET ME DREAM AGAIN, C, D and E $\flat$ .. SLEEP, MY LOVE, D $\flat$ and F .. ONCE AGAIN, D and F .. GOLDEN DAYS, D .. LOOKING BACK, D and F .. WILL HE COME? D, E $\flat$ and F .. <b>C. V. STANFORD</b> IS IT THE WIND OF THE DAWN, Duet, G & A .. THE CALICO DRESS, F and A $\flat$ .. MY LOVE'S AN ARBUTUS, F, G, and B $\flat$ .. FATHER O'FLYNN, A $\flat$ , B $\flat$ and C .. <b>LEO. STERN</b> OH FOR A DAY OF SPRING, C and E $\flat$ .. <b>G. H. STONE.</b> A DOLLY AND A COACH, E $\flat$ , F & G .. <b>HOPE TEMPLE</b> THE SCENT OF THE MIGNONETTE, C, D, E $\flat$ and F .. ALL MY WORLD, D, E $\flat$ and F .. SLEEP, MY BELOVED, F, G and A $\flat$ .. ROBY DARLIN', E $\flat$ and F .. MEMORIES, F and A $\flat$ .. THOUGHTS AND TEARS, C, D $\flat$ , E $\flat$ and F .. IN SWEET SEPTEMBER, D, E $\flat$ and F .. A MOTHER'S LOVE, E $\flat$ , F and G .. MY LADY'S BOWER, E $\flat$ , F and G .. FOND HEART, FAREWELL, C, D $\flat$ and E $\flat$ .. AN OLD GARDEN, G, A $\flat$ and B $\flat$ .. WERE WE LOVERS THEN? E $\flat$ , F and G .. WHEN WE MEET, F, G and A .. <b>A. GORING THOMAS</b> THE BLACKSMITH'S HAMMER, E $\flat$ and F .. WINDS IN THE TREES, C, E $\flat$ & F .. <b>H. TROTÈRE</b> THE DEATHLESS ARMY, A and B $\flat$ .. <b>R. H. WALTHER</b> MAY-DAY, A $\flat$ , B $\flat$ & C .. BREAK, BREAK, BREAK, C minor .. APRIL AND I, C, E $\flat$ , and F .. ELDORADO, C and D .. GLEASNER'S SLUMBER SONG, E $\flat$ & F .. <b>F. E. WEATHERLY</b> BEE AND THE SONG, G and B $\flat$ .. <b>FRED. J. WHISHAW</b> VAINKA'S SONG, F and G .. <b>MAUDE V. WHITE</b> WHEN YOU RETURN, B $\flat$ , C, D .. KING CHARLES, G .. LOVE ME, SWEET, WITH ALL THOU ART, D, F and G .. <b>H. LANE WILSON</b> (ARRANGED BY) COME, LET'S BE MERRY, B $\flat$ .. WHEN DULL CARE, F and G .. A SAILOR LOVED A LASS, E $\flat$ ..	B $\flat$ to D A $\flat$ to F C to D D to E A $\flat$ to D $\sharp$ F $\sharp$ to D B $\flat$ to D B $\flat$ to E $\flat$ F $\sharp$ to D B $\flat$ to D A to D A to C B $\flat$ to E $\flat$ C to A $\flat$ A to F B to E A $\flat$ to D $\sharp$ C to E A to F $\sharp$ A to D A to C B $\flat$ to E $\flat$ C to A $\flat$ A to F B to E A to F B to E A to D A to D A to D A to D B to D B to E A to E $\flat$ A to C B to D A to D A to D A to D B to D A to D A to D A to D B to E A to E C to F B to D B to E $\flat$ A to D A to D A to D B to E $\flat$ A to D B to E $\flat$ A to D B to E $\flat$ A to D A to D A to D B to E $\flat$ A to D A to D A to D B to E A to D A to D B to E	<i>Mr. Franklin Clive</i> <i>Mr. Plunket Greene</i> <i>Mr. Jack Robertson</i> <i>Mr. Edward Lloyd</i> <i>Mr. Santley</i> <i>Miss Ada Crossley</i> <i>Signor Foli</i> <i>Miss Ada Crossley</i> <i>Mdme. Ant. Sterling</i> <i>Mrs. Osgood</i> <i>Miss Clara Butt</i> <i>Mdme. Nilsson</i> <i>Mdme. Patey</i> <i>Mr. Sims Reeves</i> <i>Mdme. Patey</i> <i>Mdme. Patey and M. Trebelli</i> <i>Mdme. Patey</i> <i>Miss Evan. Florence</i> <i>Mr. Plunket Greene</i> <i>Mr. Santley and Signor Foli</i> <i>Miss Clara Butt</i> <i>Miss Lucy Clarke</i> <i>Mdme. Belle Cole</i> <i>Mr. Herbert Grover</i> <i>Mr. Ben Davies</i> <i>Miss M. Elliott</i> <i>Mr. Ben Davies</i> <i>Mdme. C. Samuell</i> <i>Mdme. Ant. Sterling</i> <i>Mdme. Belle Cole</i> <i>Mr. Santley</i> <i>Miss Eleanor Rees</i> <i>Mr. Barringt. Foote</i> <i>C to D</i> <i>B<math>\flat</math> to E<math>\flat</math></i> <i>Mr. W. H. Burgon</i> <i>Miss Louise Dale</i> <i>Miss Clara Butt</i> <i>Mme. Bertha Moore</i> <i>Mr. Franklin Clive</i> <i>Miss Ada Crossley</i> <i>Mrs. Mary Davies</i> <i>Mdme. Alice Gomez</i> <i>Miss Clara Butt</i> <i>Mr. Plunket Greene</i> <i>Mdme. Alice Gomez</i> <i>Mr. H. Lane Wilson</i> <i>Mr. H. Lane Wilson</i> <i>Mr. H. Lane Wilson</i>

\* \* The above Songs may be sung in public without fee or license. The public performance of any parodied versions, however, is strictly prohibited.