

à  
Antoine Rubinstein.

# Ballet

pour  
Orchestre

par

# ANATOLE LIADOW.

OP. 21  $\flat$

Partition d'orchestre	Pr. R.	$\frac{2.50}{- 90}$
Parties d'orchestre	Pr. R.	$\frac{7.45}{- 45}$
Parties supplémentaires à	R.	$\frac{- 30}{- 10}$

Droits d'exécution réservés.  
Propriété de l'Éditeur pour tous Pays.

## M. P. BELAÏEFF, LEIPZIG.

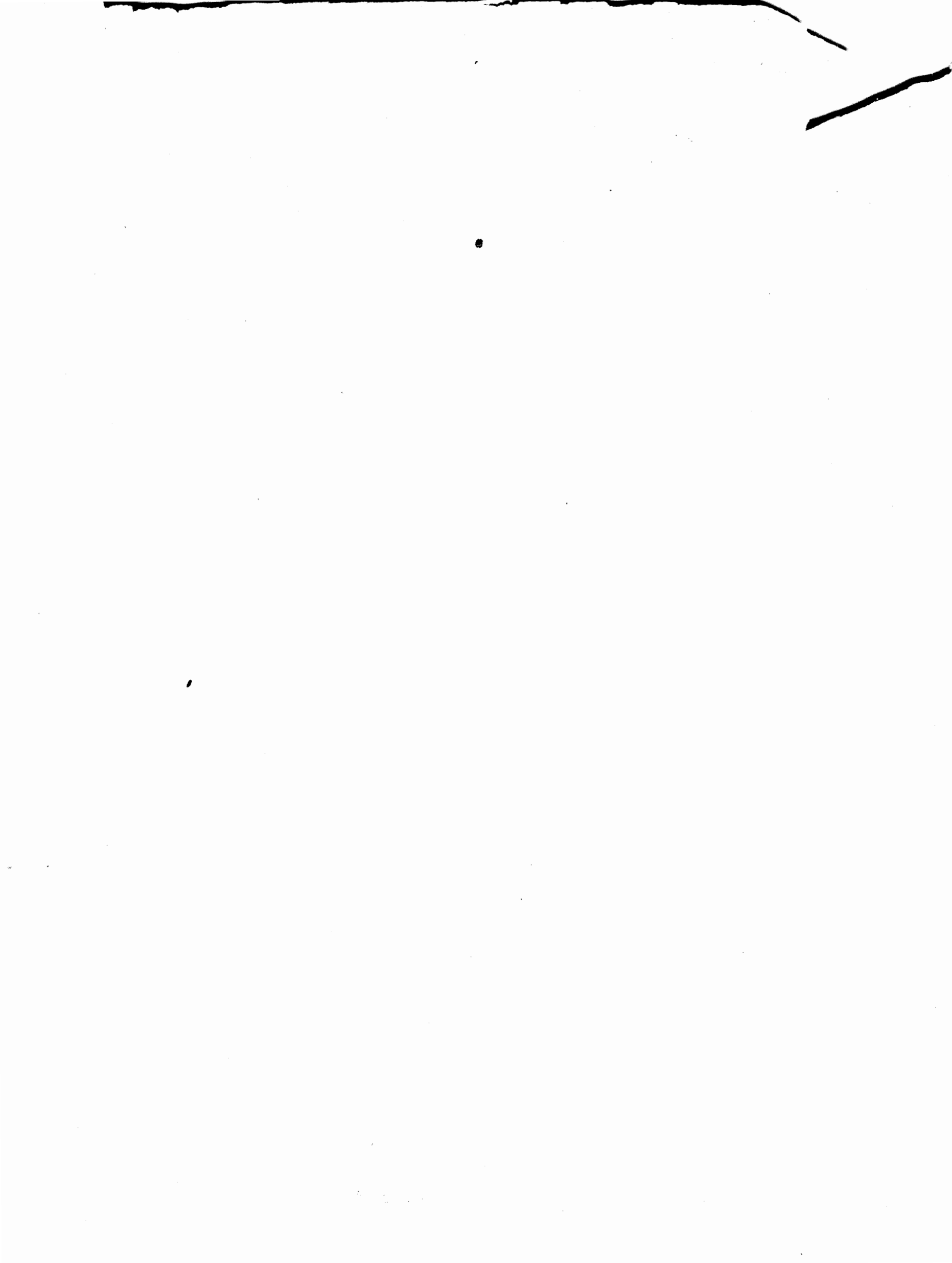
1906

St. Pétersbourg, dépôt général chez J. Jurgenson, Morskaïa 9.

2692 2693

Inst. Lith. de C.G. Röder, G.m.b.H. Leipzig.

Storage  
14  
100  
200



„Поведемъ же, братія, сказанье  
Отъ временъ Владиміровыхъ древнихъ“...  
(Слово о Полку Игоревѣ.)

# ПРО СТАРИНУ.

Ballade.

А. Лядова, Op. 21(b).  
A. Liadow, Op. 21b.

Largo. M.M. ♩ = 52.

1 Flauto piccolo.

2 Flauti grandi.

2 Oboi.

2 Clarinetti in A.

2 Fagotti.

4 Corni in F.

2 Trombe in C.

3 Tromboni e Tuba.

Timpani.

Triangolo.

Tamburino.

Tamburo.

Pianino.

Arpa.

Violini I.

Violini II.

Viole. 3 Viole sole.

Violoncelli. Altri. 2 Violoncelli soli.

Contrabassi.

Largo. M.M. ♩ = 52.

**1**  
Clar. I.  
Cor. III.  
Pian. *mf*  
Arpa. *mf*  
Viol. I. *div.* *pp*  
Viol. II. *div.* *pp*  
V-le. a 3. *p*  
V-c. *mf* *dim.*  
C-b. *p*

**1** **2**  
Ob.  
Clar.  
Fag.  
Cor. I. II.  
Pian. *mf*  
Arpa. *mf*  
Viol. I. *div.*  
Viol. II. *p* *mf*  
V-le. a 3. *mf*  
V-c. *p* *mf*  
C-b. *mf*  
Tutti V-celli *div. a 3.*  
unis. *p*  
Tutti. *p*  
*cresc.*  
*cresc.*  
*cresc.*  
*cresc.*  
*cresc.*  
*cresc.*  
*cresc.*  
*cresc.*  
**2** *mf*

Fl. picc.

rit. **3** Allegro.  $\text{♩} = 56$ .

Fl. gr.

Ob.

Clar.

Fag.

Cor.

Tr-be.

Timp.

Pian.

Arpa.

Viol. I.

Viol. II.

V.le.

V.c.

C-b.

unis.

*mf cresc.*

*mf cresc.*

*mf cresc.*

*mf cresc.*

*mf cresc.*

*mf*

*mf cresc.*

*mf cresc.*

*mf cresc.*

*mf cresc.*

*mf cresc.*

*mf cresc.*

*cresc.*

$\frac{5}{4} (2+3)$

$\frac{5}{4} (2+3)$

$\frac{5}{4} (2+3)$

$\frac{5}{4} (2+3)$

$\frac{5}{4} (2+3)$

$\frac{5}{4} (2+3)$

$\frac{5}{4} (2+3)$

$\frac{5}{4} (2+3)$

$\frac{5}{4} (2+3)$

$\frac{5}{4} (2+3)$

$\frac{5}{4} (2+3)$

$\frac{5}{4} (2+3)$

$\frac{5}{4} (2+3)$

$\frac{5}{4} (2+3)$

$\frac{5}{4} (2+3)$

$\frac{5}{4} (2+3)$

$\frac{5}{4} (2+3)$

rit. **3** Allegro.  $\text{♩} = 56$ .



Fl. picc.

Fl. gr.

Ob.

Clar.

Fag.

Cor.

Tr-be.

Tr-bni e Tuba.

Timp.

Triang.

T-rino.

This section contains the staves for woodwinds and percussion. The Flute Piccolo (Fl. picc.) and Flute Grand (Fl. gr.) parts feature melodic lines with dynamics *p cresc.* and *mf cresc.* leading to a fortissimo (*f*) section with trills. The Oboe (Ob.) part has a melodic line with dynamics *mf cresc.* and *mf*. The Clarinet (Clar.) and Bassoon (Fag.) parts play a rhythmic pattern with dynamics *p* and *cresc.*. The Horns (Cor.) and Trumpets (Tr-be.) play a rhythmic accompaniment with dynamics *p* and *cresc.*. The Trombones and Tubas (Tr-bni e Tuba) and Timpani (Timp.) play a rhythmic accompaniment with dynamics *p* and *cresc.*. The Triangle (Triang.) and Snare Drum (T-rino) play a rhythmic accompaniment with dynamics *p* and *cresc.*.

Pian.

Arpa.

Viol. I.

Viol. II.

V-le.

V-c.

C-b.

This section contains the staves for Piano, Arpa, and strings. The Piano (Pian.) and Arpa parts feature a rhythmic accompaniment with dynamics *p* and *cresc.*. The Violin I (Viol. I.) and Violin II (Viol. II.) parts play a rhythmic accompaniment with dynamics *p* and *cresc.*. The Viola (V-le.) part plays a rhythmic accompaniment with dynamics *p* and *cresc.*. The Violoncello (V-c.) and Contrabasso (C-b.) parts play a rhythmic accompaniment with dynamics *p* and *cresc.*. The Violin II part also features trills with dynamics *mf cresc.* and *f*.

poco a poco ritenuto

Fl. picc. *tr* *tr*

Fl. gr.

Ob. *tr* *tr* *tr* *tr*

Clar. *tr* *tr*

Fag. *tr* *tr* *tr* *tr*

Cor.

Tr-be.

Tr-bni e Tuba. *f*

Timp. *tr* *tr* *tr* *tr* *tr* *tr* *tr*

Triang. *p cresc.*

T-rino.

Viol. I.

Viol. II.

V-le.

V-c. *unis.*

C-b. *f*

*f* poco a poco ritenuto

5

Ob. Moderato. ♩ = 184.

Ob. *sf*

Clar. *sf* *p* *mf* *p*

Fag. *sf* *p* *mf* *p*

Cor. *sf* *III.* *p>*

Tr-bni e Tuba. *sf*

Timp. *sf*

Pian. *sf* *p*

Arpa. *sf* *p*

Viol. I. *sf* *p* *mf* *p* *Cantabile*

Viol. II. *sf* *p* *mf* *p* *Cantabile*

V-le. *sf* *p* *mf* *p* *div.*

V-c. *sf* *p* *mf* *p*

C-b. *sf* *p* *mf* *p*

5

Moderato. ♩ = 184.





8

Fl. picc.

Fl. gr.

Ob.

Clar.

Fag.

Cor.

Pian.

Arpa.

Viol. I.

Viol. II.

V-le.

V-c.

C-b.

*p*

*mf*

*dim.*

*pizz.*

8<sup>p</sup>

Fl. gr. *f* *p* *mf* *f* *p* *mf* *f*

Ob. *f* *p* *mf* *f* *p* *mf* *f*

Clar. *f* *p* *mf* *f* *p* *mf* *f*

Fag. *f* *p* *mf* *f* *p* *mf* *f*

Cor. *f* *p* *mf* *f* *p* *mf* *f*

Pian.

Arpa.

Viol. I. *f* *p* *f* *p* *f* *p* *f*

Viol. II. *f* *p* *f* *p* *f* *p* *f*

V-le. *f* *p* *f* *p* *f* *p* *f*

V-c. *f* *p* *f* *p* *f* *p* *f*

C-b. *p* (pizz.) (pizz.) *p*

Fl. gr. *ff*

Ob. *ff*

Clar. *ff* *sfmf* *p* *pp*

Fag. *ff*

Cor. *ff*

Tr-be. a 2. *f*

Triang. *f*

Trino. *f*

Pian. *mf* *p*

Arpa. *mf* *mf* *p* *p*

Viol. I. *ff* *tr#* *tr#* *tr#* *tr#* *pp*

Viol. II. *ff*

V-le. *ff*

V-c. *ff* *pizz.* *mf* *p* *pp*

C-b. *ff* *arco* *pizz.* *mf* *p* *pp*







accelerando

Ob. *p*

Clar. *p*

Fag. *p*

Cor. *a 2.* *f*

Tr-be. *p*

Tr-bone e Tuba. *p*

T-uro. *p*

*p* *cresc.* *mf* *cresc.*

*p* *cresc.* *mf* *cresc.*

*p* *cresc.* *mf* *cresc.*

*f* *p*

*f*

*p* *mf*

Pian. *mf* *dim.*

Arpa. *mf* *dim.*

Viol.I. *p*

Viol.II. *p*

V-le. *p*

V-c. *p*

C-b. *p*

*p* *cresc.* *mf* *cresc.*

*p* *cresc.* *mf* *cresc.*

*p* *cresc.* *mf* *cresc.*

*p* *cresc.* *mf* *cresc.*

*p* *cresc.* *mf* *cresc.*

*unis.* *p* *cresc.* *mf* *cresc.*

accelerando

Fl.picc. *f* *p* *f* *p* *mf cresc.* *p*

Fl.gr. *f* *p* *f* *p* *mf cresc.* *p*

Ob. *f* *p* *f* *p* *mf cresc.* *p*

Clar. *f* *p* *f* *p* *mf cresc.* *p*

Fag. *f* *p* *f* *p* *mf cresc. cresc.* *p*

Cor. *f* *p* *f* *p* *mf cresc.* *p*

Tr-be. *f* *p* *f* *p* *mf cresc.* *p*

Tr-bni & Tub. *f* *p* *f* *p* *mf cresc.* *p*

Timp. *f* *p* *f* *p* *mf cresc.* *p*

Triang. *f* *p* *f* *p* *mf cresc.* *p*

T-rino *f* *p* *f* *p* *mf cresc.* *p*

T-uro *f* *p* *f* *p* *mf cresc.* *p*

Pian. *p* *p* *p* *p* *mf* *f*

Arpa. *p* *p* *p* *p* *mf* *f*

Viol.I. *f* *p* *mf cresc.*

Viol.II. *f* *p* *mf cresc.*

V.le. *f* *pizz.* *mf cresc. arco*

V-c. *f* *pizz.* *mf cresc. arco*

C-b. *f* *mf pizz.* *mf cresc. arco*

Fl. picc.

Fl. gr.

Ob.

Clar.

Fag.

Cor.

Tr. b. e. Tub.

Timp.

Triang.

T-rino.

Pian.

Arpa.

Viol. I. *cantabile*

Viol. II. *cantabile*

V. le. *div.*

V. c. *unis.*

C-b.









Fl.picc.

Fl.gr.

Ob.

Clar.

Fag.

Cor.

Tr.be.

Tr.bni e Tuba

Triang.

Trino

Turo

Pian.

Arpa.

Viol. I.

Viol. II.

V-le.

V.c.

C-b.

*p*

*f*

*mf dim.*

*mf*

*cresc.*

*a 3*

Fl. picc. *f* *tr*

Fl. gr. *f* *tr*

Ob. *f* *tr*

Clar. *f* *tr*

Fag. *f* *tr*

Cor. *f* *tr*

Tr. ba. *f* *tr*

Tr. bni e Tuba *f* *tr*

Pian. *f* *tr*

Arpa. *f* *tr*

Viol. I. *f* *tr*

Viol. II. *f* *tr*

V. le *f* *tr* non div. *o*

V. c. *f* *tr* unis *o*

C. b. *f* *tr*

*p* *pizz.*

*p* *pizz.*

*p* *pizz.*

*p* *pizz.*

*p*

Fl.gr. *p*

Clar. *p*

Fag. *pp*

Cor. *pp* *dim.*

Viol. I. *p* *pp* *arco*

Viol. II. *arco*

V.le. *div.* *p* *arco*

V.c. *arco* *div.* *arco*

C-b. *p*

Fl.gr. *p cresc.*

Clar. *p* *cresc.*

Fag. *p* *cresc.*

Cor. *p* *cresc.*

Pian. *p* *cresc.*

Arpa. *p* *cresc.*

Viol. I. *p*

Viol. II. *p*

V.le. *unis* *p* *tr* *tr*

V.c. *dim.* *p cresc.*

C-b. *p* *p cresc.*

