

WALSES,

Tiroliennes, Rondeaux, Airs connus, &c.

Arrangés pour

Flûte

PAR

C. DE MARESCOT

Prix 4^f. 50^c.

à Paris.

Chez Martin M^d de Musique et d'Instruments, Rue et Place de l'École de Médecine

Dép. à la Direction



V^m 12
g 15603

FLÛTE.

MARCHE.

AIR
COSAQUE.

VALSE.

FLÛTE.

RONDO. *ALL.^{to}*

VALSE.

FLÛTE.

VALSE DE
LA REINE
DE PRUSSE.

Musical score for 'Valse de la Reine de Prusse' in G major, 6/8 time. The score consists of seven staves of music. The first staff begins with a treble clef, a key signature of one sharp (F#), and a 6/8 time signature. The music features a mix of eighth and sixteenth notes, often beamed together. The second staff includes markings for 'I^{re} fois' and 'II^{de} fois'. The third staff contains a 'FIN.' marking. The piece concludes with a double bar line and a repeat sign.

LE RANG
DES VACHES

Musical score for 'Le Rang des Vaches' in G major, 3/8 time. The score consists of three staves of music. The first staff is marked 'ADAGIO.' and features several triplet markings (indicated by a '3' over the notes). The second staff is marked 'ALL.^{TO.}' and contains more triplet markings. The third staff is marked 'ADA.^{IO.}' and also includes triplet markings. The piece ends with a double bar line.

FLÛTE.

JEUNES
AMANS

Musical notation for the piece 'JEUNES AMANS'. It consists of five staves of music in treble clef, key of B-flat major (two flats), and 2/4 time signature. The melody is characterized by eighth and sixteenth notes, often beamed together in pairs or groups of four. The piece concludes with a double bar line.

ANDANTE.

Musical notation for the piece 'ANDANTE'. It consists of two staves of music in treble clef, key of B-flat major (two flats), and 2/4 time signature. The melody is slower and features a mix of eighth and quarter notes. The piece concludes with a double bar line.

MENUET.

Musical notation for the piece 'MENUET'. It consists of four staves of music in treble clef, key of D major (one sharp), and 3/4 time signature. The melody is lively and features many sixteenth notes, often beamed together in groups of four. The piece concludes with a double bar line.

FLÛTE.

TIROLIENNE.

Musical notation for 'TIROLIENNE' in 3/4 time, featuring a treble clef, a key signature of one sharp (F#), and six staves of music. The piece includes various rhythmic patterns and triplets.

VALSE.

Musical notation for 'VALSE' in 3/8 time, featuring a treble clef, a key signature of one sharp (F#), and three staves of music. The piece is characterized by prominent triplet figures.

AIR DU
PREMIER PAS.

Musical notation for 'AIR DU PREMIER PAS' in 2/4 time, featuring a treble clef, a key signature of one sharp (F#), and two staves of music. The piece has a steady eighth-note rhythm.

FLÛTE.

VALSE PRUSSIENNE.

Musical notation for 'Valse Prussienne' in treble clef, 3/8 time, key of D major. It consists of three staves of music. The first staff begins with a treble clef, a key signature of one sharp (F#), and a 3/8 time signature. The piece concludes with a double bar line and a repeat sign.

AIR CONNU.

Musical notation for 'Air connu' in treble clef, 6/8 time, key of D major. It consists of three staves of music. The first staff begins with a treble clef, a key signature of one sharp (F#), and a 6/8 time signature. The piece concludes with a double bar line and a repeat sign.

AIR DES VISITANDIN.

Musical notation for 'Air des Visitandin' in treble clef, 6/8 time, key of D major. It consists of three staves of music. The first staff begins with a treble clef, a key signature of one sharp (F#), and a 6/8 time signature. The piece concludes with a double bar line and a repeat sign.

VALSE.

Musical notation for 'Valse' in treble clef, 3/8 time, key of D major. It consists of two staves of music. The first staff begins with a treble clef, a key signature of one sharp (F#), and a 3/8 time signature. The piece concludes with a double bar line and a repeat sign.



FLÛTE.

JE SUIS LINDOR.

Musical notation for the first piece, 'JE SUIS LINDOR.', in G minor, 2/4 time. It consists of a single staff with a treble clef, a key signature of two flats, and a 2/4 time signature. The melody begins with a quarter rest followed by a series of eighth and sixteenth notes.

Continuation of the musical notation for 'JE SUIS LINDOR.', ending with a trill (tr) on the final note.

AIR CONNU.

Musical notation for the second piece, 'AIR CONNU.', in G major, common time. It consists of a single staff with a treble clef, a key signature of one sharp, and a common time signature. The melody is a simple, rhythmic line of quarter and eighth notes.

Continuation of the musical notation for 'AIR CONNU.', showing a series of eighth and sixteenth notes.

Continuation of the musical notation for 'AIR CONNU.', showing a series of eighth and sixteenth notes.

Continuation of the musical notation for 'AIR CONNU.', showing a series of eighth and sixteenth notes.

QUINOIR MAIS PASSIDIABLE.

Musical notation for the third piece, 'QUINOIR MAIS PASSIDIABLE.', in G major, 2/4 time. It consists of a single staff with a treble clef, a key signature of one sharp, and a 2/4 time signature. The melody is a rhythmic line of eighth and sixteenth notes.

Continuation of the musical notation for 'QUINOIR MAIS PASSIDIABLE.', showing a series of eighth and sixteenth notes.

Continuation of the musical notation for 'QUINOIR MAIS PASSIDIABLE.', showing a series of eighth and sixteenth notes.

VIVENT LES FILLIETTES.

Musical notation for the fourth piece, 'VIVENT LES FILLIETTES.', in G major, 2/4 time. It consists of a single staff with a treble clef, a key signature of one sharp, and a 2/4 time signature. The melody is a rhythmic line of eighth and sixteenth notes. The piece ends with a double bar line and the word 'FIN.' above it.

Continuation of the musical notation for 'VIVENT LES FILLIETTES.', ending with a long, sweeping melodic line that concludes with a double bar line and the letters 'DC' (Da Capo).

FLÛTE.

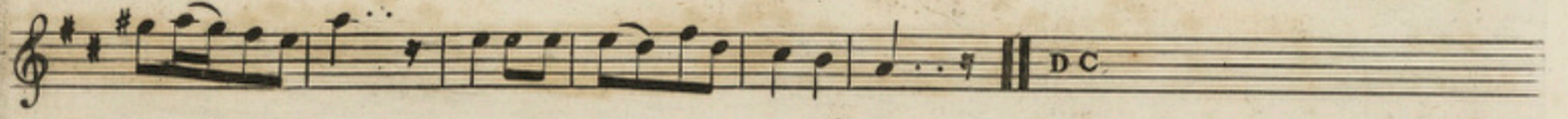
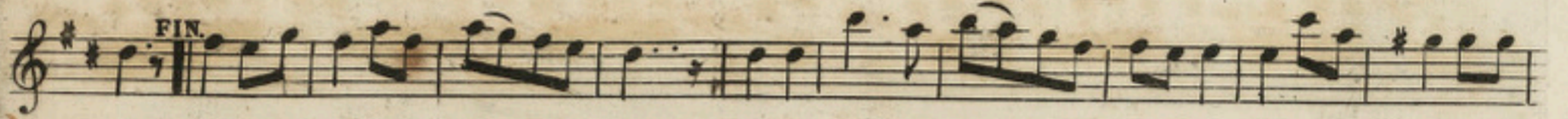
VALESE.

PAS
REDOUBLÉ.

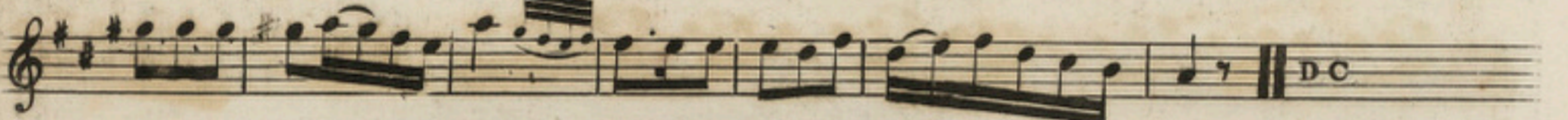
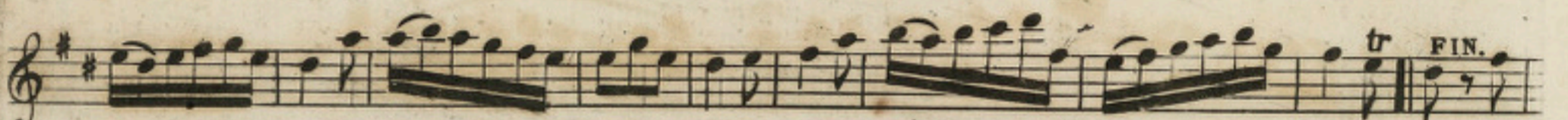
VALESE.

FLÛTE.

PAUVRE
JAQUES.



LE MÊME
EN VALSE.



SAUTEUSE.



FLÛTE.

VALESE.

Musical notation for the 'VALESE' section, consisting of five staves of music in 3/8 time. The notation includes various rhythmic patterns, slurs, and a 'FIN.' marking on the third staff.

SAUTEUSE.

Musical notation for the 'SAUTEUSE' section, consisting of four staves of music in 2/4 time. The notation includes various rhythmic patterns, slurs, and a 'FIN.' marking on the third staff.

HONGROISE.

Musical notation for the 'HONGROISE' section, consisting of two staves of music in 3/8 time. The notation includes various rhythmic patterns and slurs.

FLÛTE.

LA PIPE
DE TABAC.

Musical notation for 'LA PIPE DE TABAC' in G major, 2/4 time. It consists of three staves of music. The first staff begins with a treble clef, a key signature of one sharp (F#), and a 2/4 time signature. The melody is characterized by rapid sixteenth-note passages and slurs.

UNE
TIROLIENNE.

Musical notation for 'UNE TIROLIENNE' in G major, 3/4 time. It consists of six staves of music. The first staff begins with a treble clef, a key signature of one sharp (F#), and a 3/4 time signature. The melody is more melodic and features repeat signs with first and second endings. The first ending is marked 'I^{er} FOIS' and the second ending is marked 'II^{er} FOIS'.

PAS
REDOUBLÉ.

Musical notation for 'PAS REDOUBLÉ' in G major, 2/4 time. It consists of three staves of music. The first staff begins with a treble clef, a key signature of one sharp (F#), and a 2/4 time signature. The melody is highly rhythmic with many sixteenth notes. The piece concludes with the word 'FIN.' and a double bar line, followed by the initials 'VDC' at the end of the third staff.

FLÛTE.

VALSE.

The first piece is a waltz in 3/8 time, marked 'VALSE.'. It consists of four staves of music. The key signature has one sharp (F#). The melody is characterized by a steady eighth-note accompaniment with occasional sixteenth-note runs. The piece concludes with a double bar line.

VALSE.

The second piece is another waltz in 3/8 time, also marked 'VALSE.'. It consists of four staves of music. The key signature has one sharp (F#). The melody features a consistent eighth-note accompaniment with some sixteenth-note passages. The piece ends with a double bar line.

SAUTEUSE

The third piece is a 'SAUTEUSE' in 2/4 time. It consists of two staves of music. The key signature has one sharp (F#). The melody is more rhythmic and includes some sixteenth-note runs. The piece concludes with a double bar line.