

OPUS 19

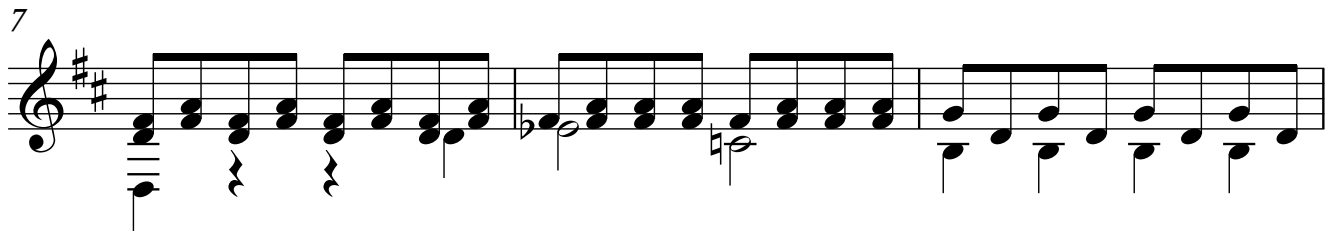
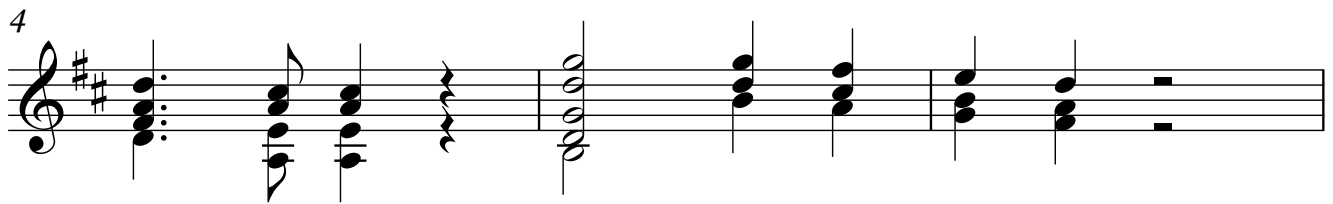
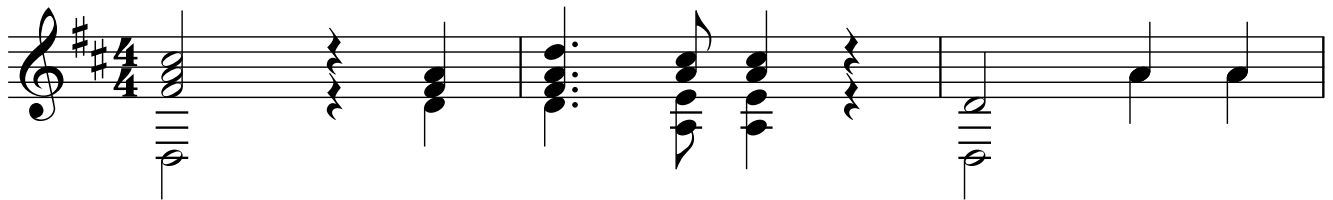
SEIS AIRES

6.- ADAGIO

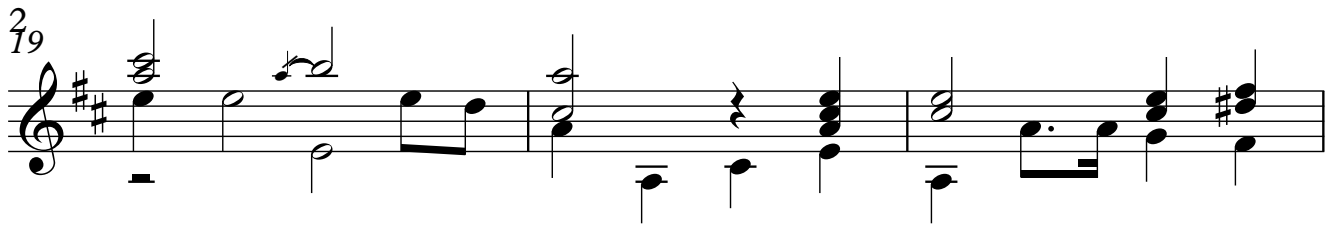
ARMONIZADO POR LUIS ALVAREZ

FERNANDO SOR

♩ = 100

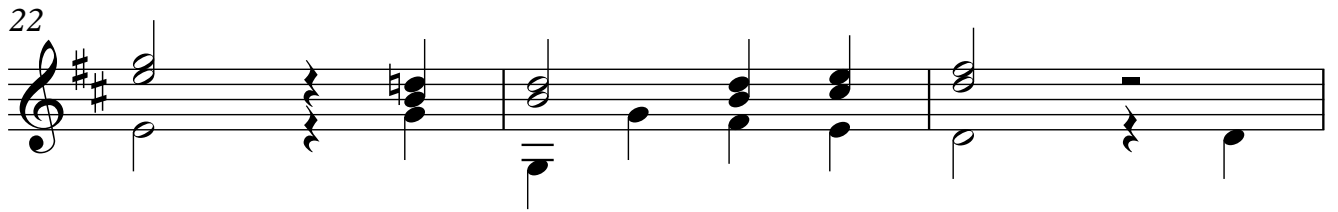


29



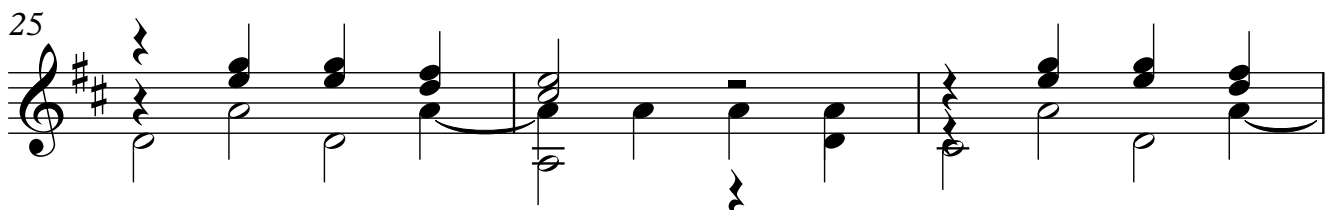
Musical staff 29, starting at measure 29. The key signature has two sharps (F# and C#). The staff contains a melody in the upper voice and a bass line in the lower voice. The melody begins with a quarter rest, followed by a quarter note G4, a quarter note A4, and a quarter note B4. The bass line consists of a half note G3, a half note F3, and a half note E3.

22



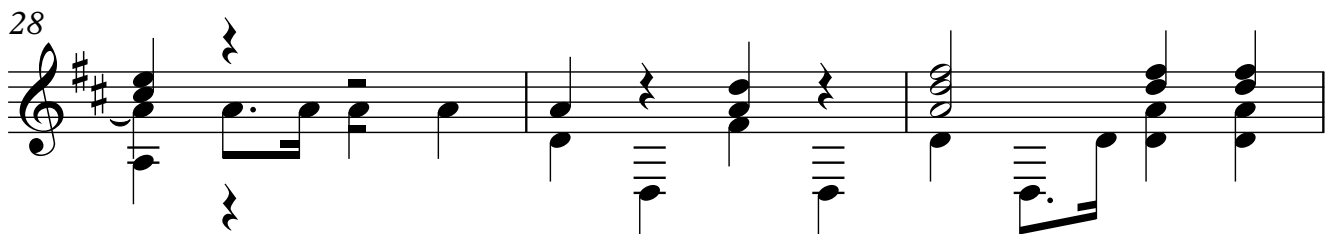
Musical staff 22, starting at measure 22. The key signature has two sharps. The staff contains a melody in the upper voice and a bass line in the lower voice. The melody begins with a quarter note G4, a quarter note A4, and a quarter note B4. The bass line consists of a half note G3, a half note F3, and a half note E3.

25



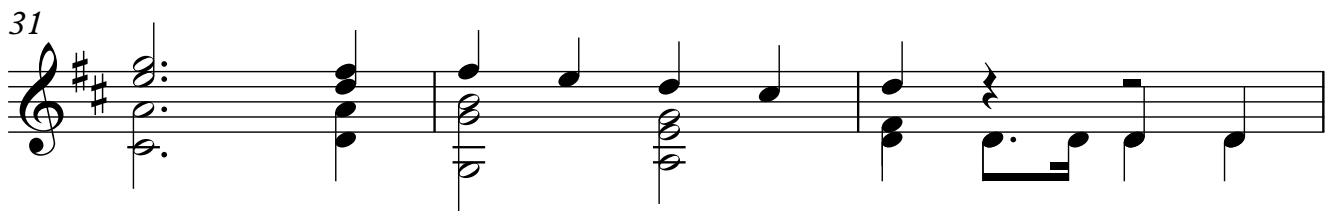
Musical staff 25, starting at measure 25. The key signature has two sharps. The staff contains a melody in the upper voice and a bass line in the lower voice. The melody begins with a quarter note G4, a quarter note A4, and a quarter note B4. The bass line consists of a half note G3, a half note F3, and a half note E3.

28



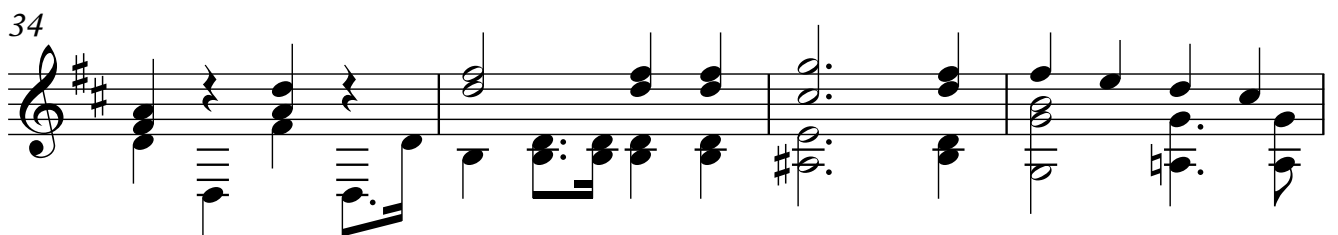
Musical staff 28, starting at measure 28. The key signature has two sharps. The staff contains a melody in the upper voice and a bass line in the lower voice. The melody begins with a quarter note G4, a quarter note A4, and a quarter note B4. The bass line consists of a half note G3, a half note F3, and a half note E3.

31



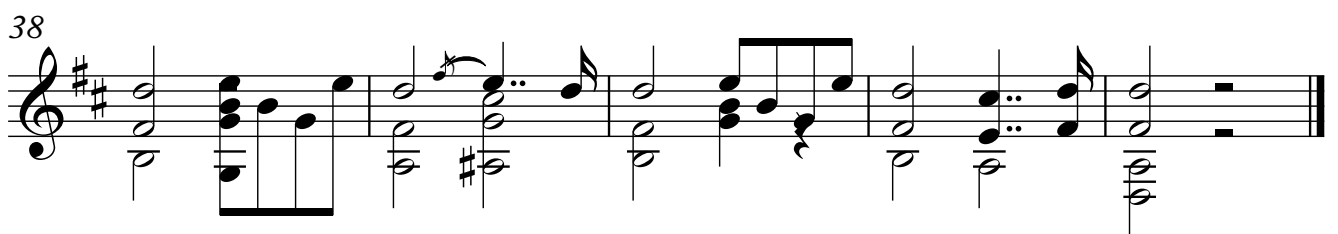
Musical staff 31, starting at measure 31. The key signature has two sharps. The staff contains a melody in the upper voice and a bass line in the lower voice. The melody begins with a quarter note G4, a quarter note A4, and a quarter note B4. The bass line consists of a half note G3, a half note F3, and a half note E3.

34



Musical staff 34, starting at measure 34. The key signature has two sharps. The staff contains a melody in the upper voice and a bass line in the lower voice. The melody begins with a quarter note G4, a quarter note A4, and a quarter note B4. The bass line consists of a half note G3, a half note F3, and a half note E3.

38



Musical staff 38, starting at measure 38. The key signature has two sharps. The staff contains a melody in the upper voice and a bass line in the lower voice. The melody begins with a quarter note G4, a quarter note A4, and a quarter note B4. The bass line consists of a half note G3, a half note F3, and a half note E3.