

CINQ THÈMES

variés

pour



par

T. Monzani.

N^o 1.

Tema 1. *Prato*  Tema 2. *Andante* 

Tema 3. *Moderato*  Tema 4. *Andante*  Tema 5. *Allegretto* 

N^o 3865.

Prix 30 s.

A Offenbach & m, chez J. André.



FLAUTO SOLO

Aria Irlandese Quasi Presto *A*

TEMA 1.

mf

Var. 1.

Legieremente p

Var. 2.

Mimore alla Pastorale.

Piu lento e del

Var. 3.

Tempo piu mosso

p

p

FLAUTO SOLO

TEMA. 2. *Andante*
Musical notation for the first staff of the main theme, starting with a treble clef, a key signature of one flat, and a 2/4 time signature. The notation includes a dynamic marking of *mf* and a *dol.* (dolce) marking.

Musical notation for the second staff of the main theme, featuring a dynamic marking of *p* and a *Adagio* tempo marking.

Musical notation for the third staff of the main theme, including dynamic markings of *dol.*, *mf*, and *pp*.

Var. 1. Musical notation for the first staff of the first variation, starting with a treble clef, a key signature of one flat, and a 2/4 time signature. It includes dynamic markings of *mf* and *p*.

Musical notation for the second staff of the first variation, including dynamic markings of *mf*, *p*, and *p*.

Musical notation for the third staff of the first variation, including dynamic markings of *crca.*, *dol.*, and *mf*.

Musical notation for the fourth staff of the first variation, including dynamic markings of *p*, *mf*, and *p*.

Var. 2. Musical notation for the first staff of the second variation, starting with a treble clef, a key signature of one flat, and a 6/8 time signature. It includes dynamic markings of *mf* and *Tutto*.

Musical notation for the second staff of the second variation.

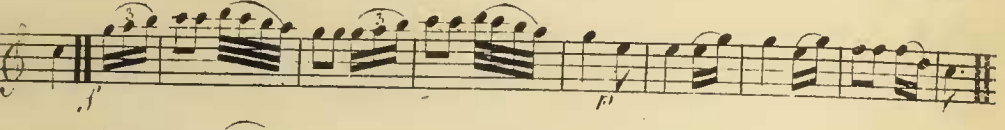
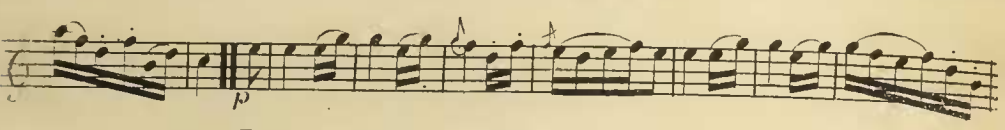
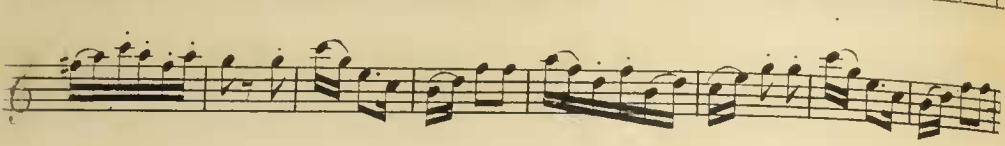
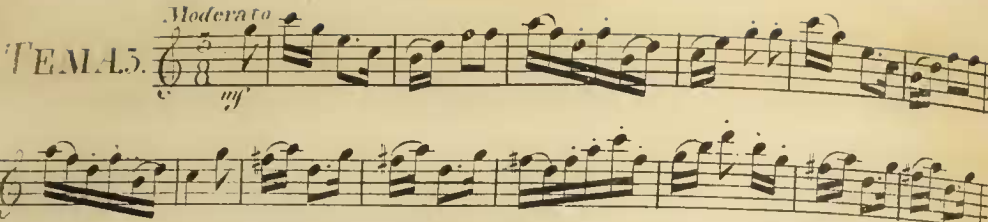
Musical notation for the third staff of the second variation, including dynamic markings of *dol.* and *mf*.

Musical notation for the fourth staff of the second variation, including a dynamic marking of *pp*.

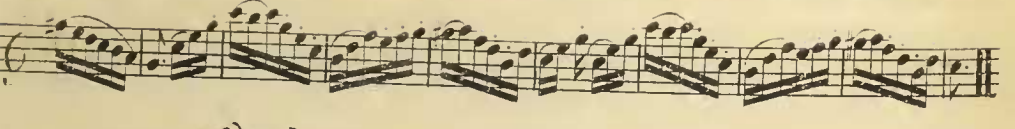
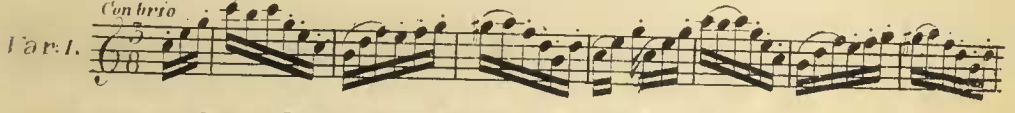
FLAUTO SOLO

1

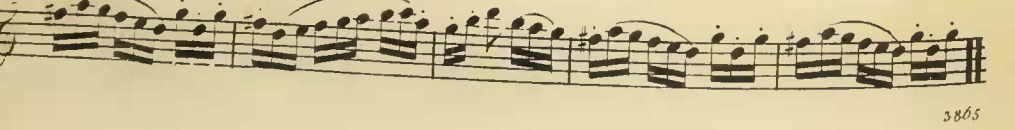
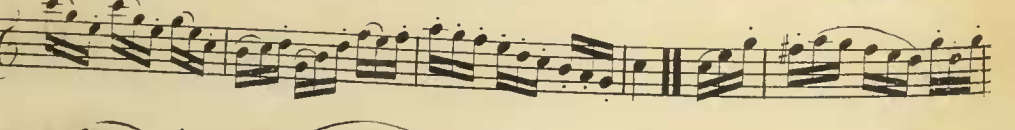
TEMA 5. *Moderato*
mf

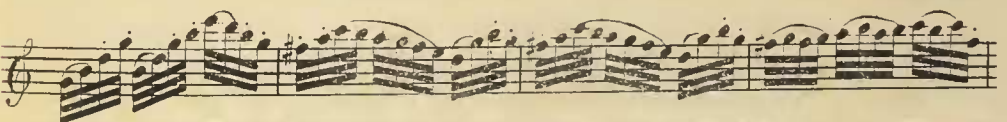
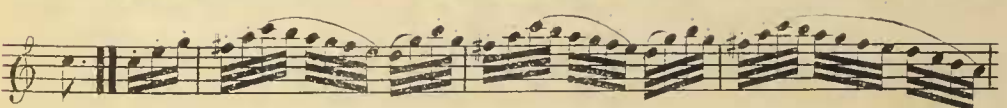
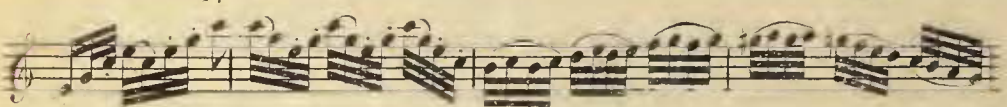
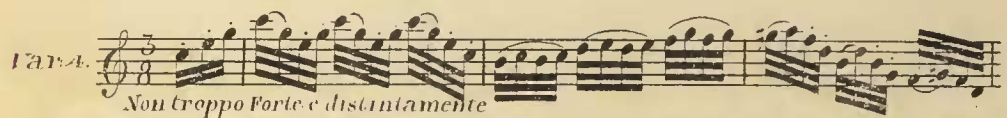
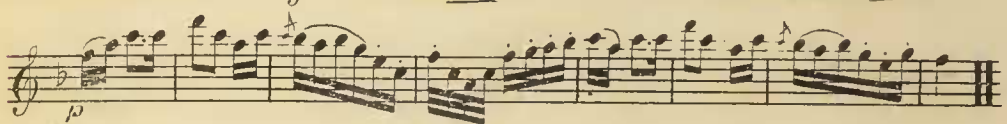
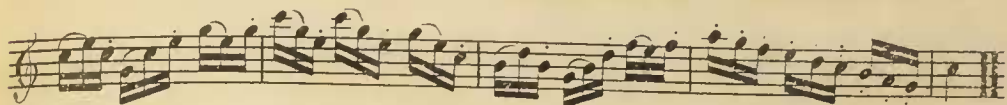
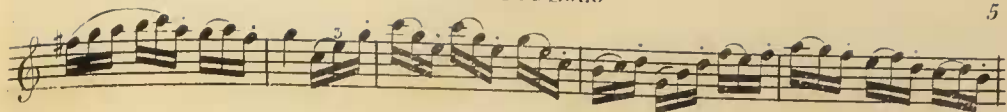


Var. 1. *Con brio*



Var. 2. *Allegro*





FLAUTO SOLO

Andante, la' Poco presto

TEMA. 1.

Piu mosso

Var. 1.

Non tanto Presto

Var. 2.

a mezza voce

Var. 3.

Tempo 1^{mo}

FLAUTO SOLO

TEMA. 5. *Allegretto*

Musical score for TEMA. 5. *Allegretto*. The piece is in G minor (one flat) and 6/8 time. It consists of three staves of music. The first staff begins with a treble clef, a key signature of one flat, and a 6/8 time signature. The tempo is marked *Allegretto*. The first staff contains the first two lines of music, starting with a piano (*p*) dynamic. The second staff continues the melody with a *pp* dynamic and includes a repeat sign. The third staff concludes the theme with a *pp* dynamic and a final double bar line.

Var. 1. *Andante amoroso*

Musical score for Var. 1. *Andante amoroso*. The piece is in G minor and 6/8 time. It consists of three staves of music. The first staff begins with a treble clef, a key signature of one flat, and a 6/8 time signature. The tempo is marked *Andante amoroso*. The first staff contains the first two lines of music, starting with a piano (*p*) dynamic. The second and third staves feature a dense, flowing texture with many sixteenth notes, marked with *pp* dynamics and including triplets.

Var. 2. *Tempo me*

Musical score for Var. 2. *Tempo me*. The piece is in G minor and 6/8 time. It consists of three staves of music. The first staff begins with a treble clef, a key signature of one flat, and a 6/8 time signature. The tempo is marked *Tempo me*. The first staff contains the first two lines of music, starting with a piano (*p*) dynamic. The second and third staves continue the melody with a *pp* dynamic, ending with a *Fine* marking and a double bar line.

