

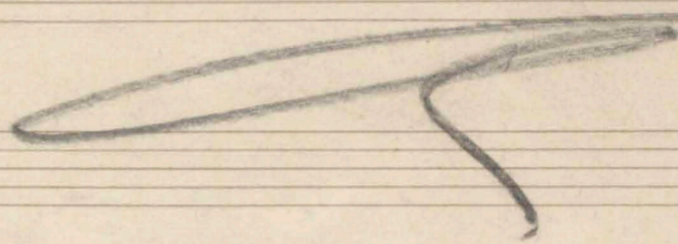
Pour la 1^{re} Communion de ma fille

A mon ami

Emile Martin

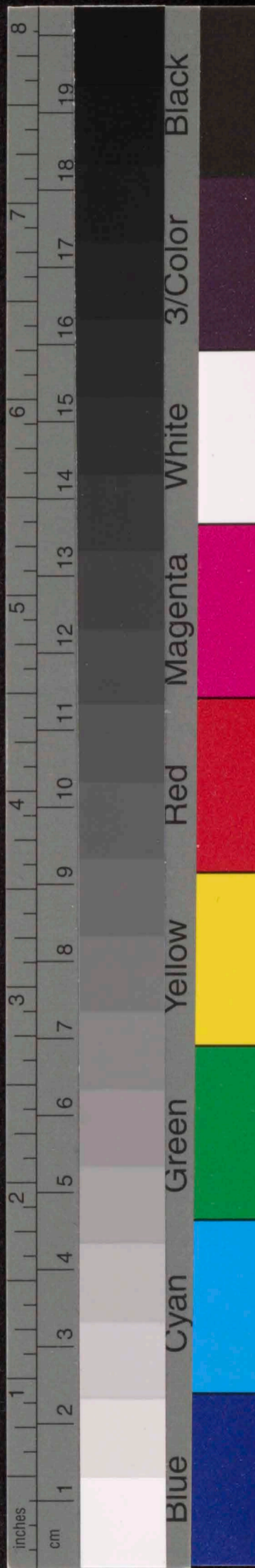
E Waldteufel

O Salutaria



De

Emile Waldteufel



120 ♪

~~rall~~

Andante ma non troppo

p O sa-lu-ta-ris, sa-lu-ta-ris hos-ti-a Quae coe-li - pan - dis

rall e dim
tempo
rall
p

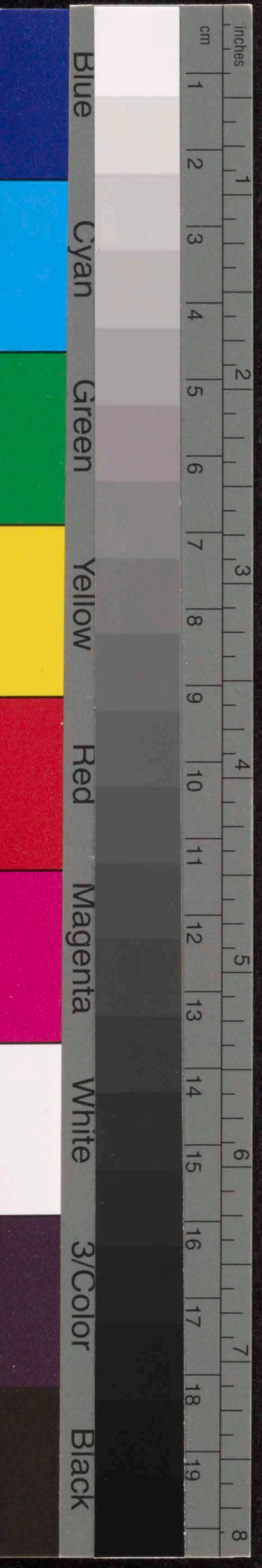
os - ti - um O sa-lu - ta - ris

rall
Minim

hos - ti - a O sa-lu - ta - ris hos - ti - a

Minim
pp mezzo f
f

Bel - la pre-munt hos-ti - li-



In larguissim

- a — so — bur — fran — xi — li — um — so — ro —

- bur — ter — an — xi — li — a

rall

tempo I'

sa — lu — ta — rio, sa — lu — ta — rio

532 60
32 20
506 30

hos — ti — a — Quae coe — li — pon — dis — os — ti — um

rall *tempo* *rall*

1000 30
368 70
632 170

men *rall* *men*

Finis Walther

1898



A handwritten musical score on aged, yellowed paper. The score is written on 19 five-line staves. The notation is in ink and includes various musical symbols such as notes, rests, stems, and beams. The first few staves contain more complex notation, including what appears to be a treble clef and a key signature of one sharp (F#). The notation becomes increasingly sparse and less distinct as it progresses down the page. There are some faint pencil markings and smudges on the paper, particularly in the lower half. The right edge of the page shows a vertical strip of yellowish tape or binding material.

