

# Guitarra 1

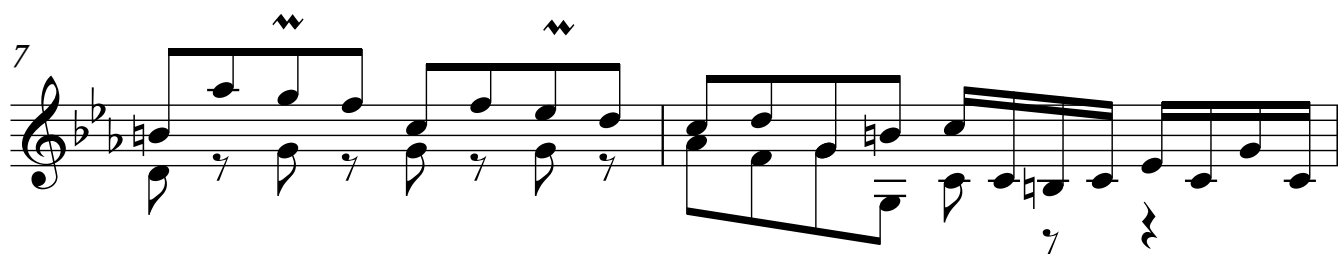
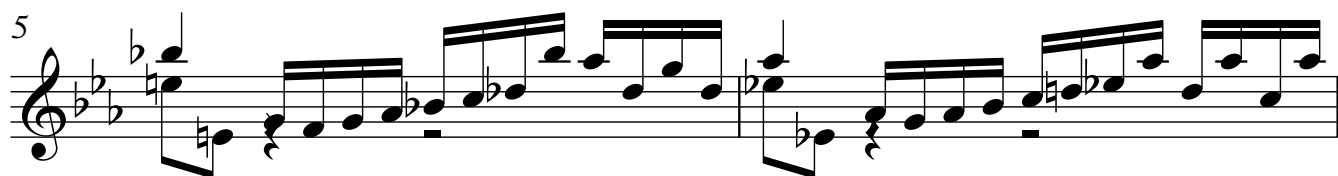
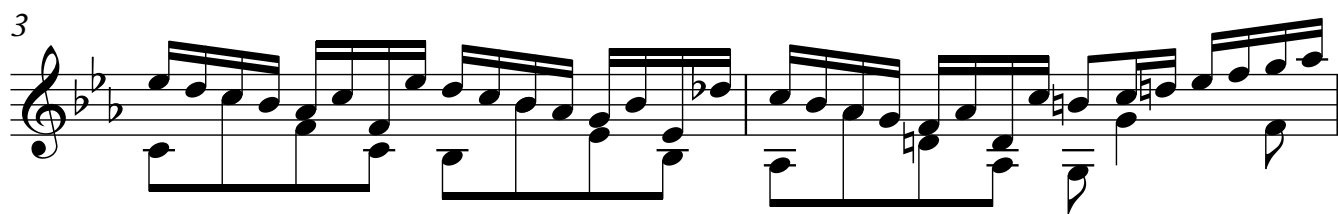
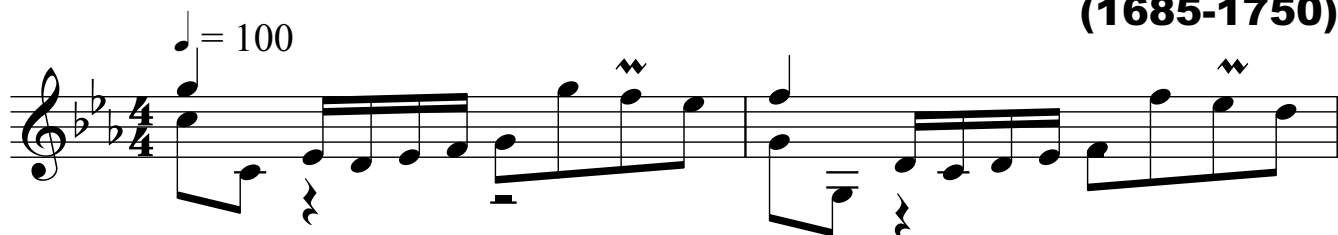
## BWV - 526

### SONATA

#### 1.- VIVACE

TRANSCRIPCIÓN: LUIS ALVAREZ

J. S. BACH  
(1685-1750)



Guitarra 1

11

13

15

17

19

21

23

Guitarra 1

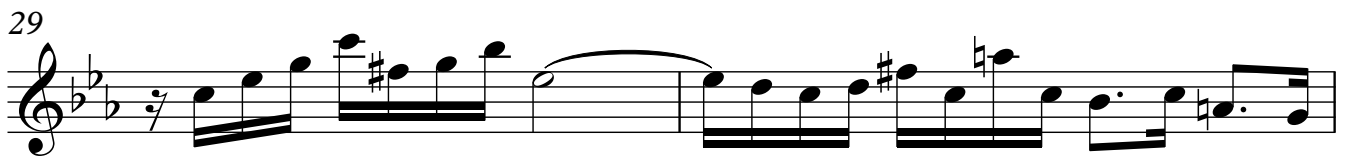
25



27



29



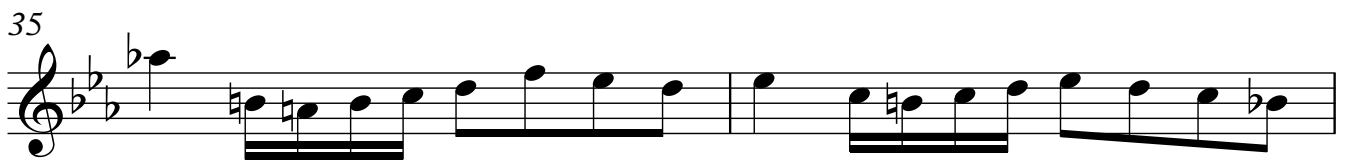
31



33



35

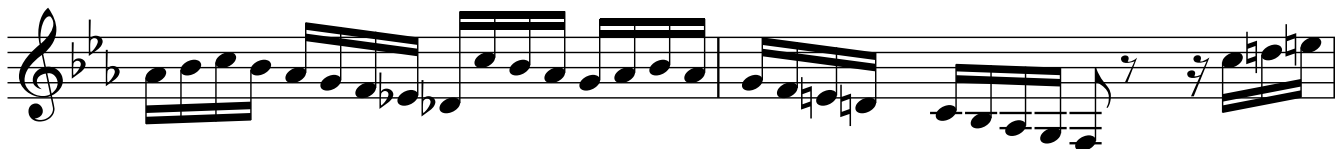


37





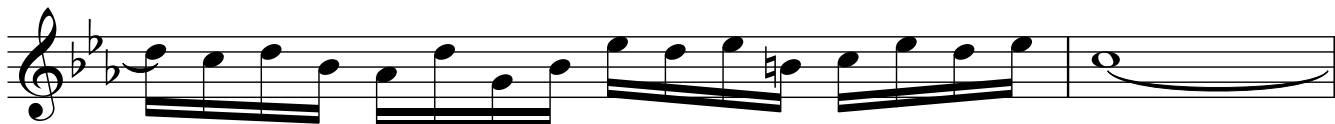
53



55



57



59



61



63



65



