

Guitarra 1

BWV - 900

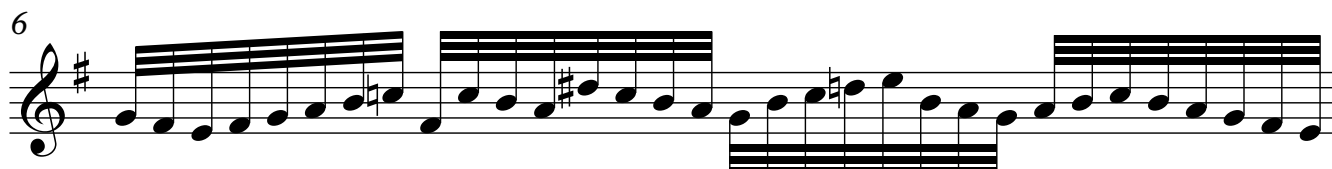
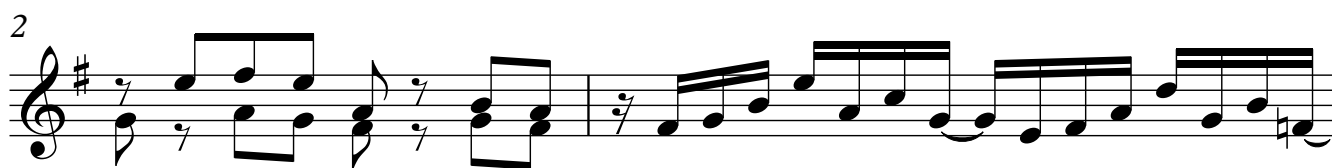
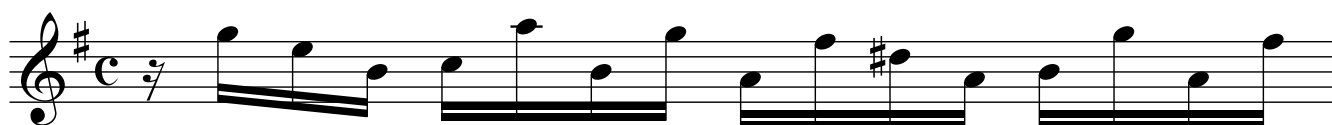
PRELUDIO Y FUGA

1.- PRELUDIO

ARMONIZADO POR LUIS ALVAREZ

J. S. BACH
(1685-1750)

♩ = 70



8

Musical notation for measures 8 and 9. Measure 8 contains a sequence of eighth notes: G4, A4, B4, C5, B4, A4, G4, F#4, E4, D4, C4. Measure 9 contains a sequence of eighth notes: B3, A3, G3, F#3, E3, D3, C3, B2, A2, G2, F#2, E2, D2, C2.

10

Musical notation for measures 10 and 11. Measure 10 contains a sequence of eighth notes: G4, A4, B4, C5, B4, A4, G4, F#4, E4, D4, C4. Measure 11 contains a sequence of eighth notes: B3, A3, G3, F#3, E3, D3, C3, B2, A2, G2, F#2, E2, D2, C2.

12

Musical notation for measures 12 and 13. Measure 12 contains a sequence of eighth notes: G4, A4, B4, C5, B4, A4, G4, F#4, E4, D4, C4. Measure 13 contains a sequence of eighth notes: B3, A3, G3, F#3, E3, D3, C3, B2, A2, G2, F#2, E2, D2, C2.

13

Musical notation for measures 14 and 15. Measure 14 contains a sequence of eighth notes: G4, A4, B4, C5, B4, A4, G4, F#4, E4, D4, C4. Measure 15 contains a sequence of eighth notes: B3, A3, G3, F#3, E3, D3, C3, B2, A2, G2, F#2, E2, D2, C2.

14

Musical notation for measures 16 and 17. Measure 16 contains a sequence of eighth notes: G4, A4, B4, C5, B4, A4, G4, F#4, E4, D4, C4. Measure 17 contains a sequence of eighth notes: B3, A3, G3, F#3, E3, D3, C3, B2, A2, G2, F#2, E2, D2, C2.

16

Musical notation for measures 18 and 19. Measure 18 contains a sequence of eighth notes: G4, A4, B4, C5, B4, A4, G4, F#4, E4, D4, C4. Measure 19 contains a sequence of eighth notes: B3, A3, G3, F#3, E3, D3, C3, B2, A2, G2, F#2, E2, D2, C2.

18

Musical notation for measures 20 and 21. Measure 20 contains a sequence of eighth notes: G4, A4, B4, C5, B4, A4, G4, F#4, E4, D4, C4. Measure 21 contains a sequence of eighth notes: B3, A3, G3, F#3, E3, D3, C3, B2, A2, G2, F#2, E2, D2, C2.