

# Guitarra 1

## BWV - 992

### CAPRICHIO

#### 6.- FUGA

TRANSCRIPCIÓN: LUIS ALVAREZ

J. S. BACH  
(1685-1750)

$\text{♩} = 100$

First line of musical notation, measures 1-3. The piece is in 4/4 time, G minor (two flats), and begins with a treble clef. The first measure starts with a quarter rest followed by a quarter note G. The subsequent measures contain eighth and sixteenth notes, with a repeat sign at the end of the third measure.

Second line of musical notation, measures 4-6. Measure 4 begins with a '4' above the staff. The line continues with eighth and sixteenth notes and rests. Measure 6 ends with a quarter rest.

Third line of musical notation, measures 7-9. Measure 7 begins with a '7' above the staff. The line includes a trill ornament over the eighth note of measure 9. The notation features a mix of eighth and sixteenth notes with repeat signs.

Fourth line of musical notation, measures 10-11. Measure 10 begins with a '10' above the staff. The line consists of eighth and sixteenth notes with repeat signs.

Fifth line of musical notation, measures 12-14. Measure 12 begins with a '12' above the staff. The line continues with eighth and sixteenth notes and rests, ending with a quarter rest.

15

18

20

23

26

29

31

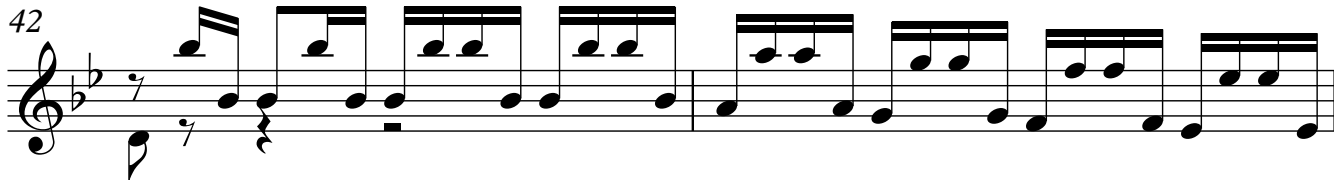
34

36

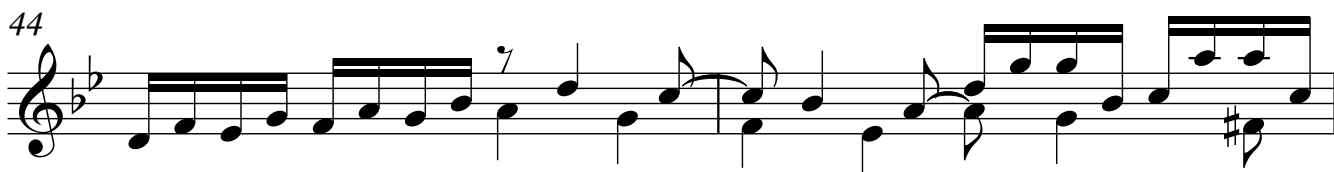
39



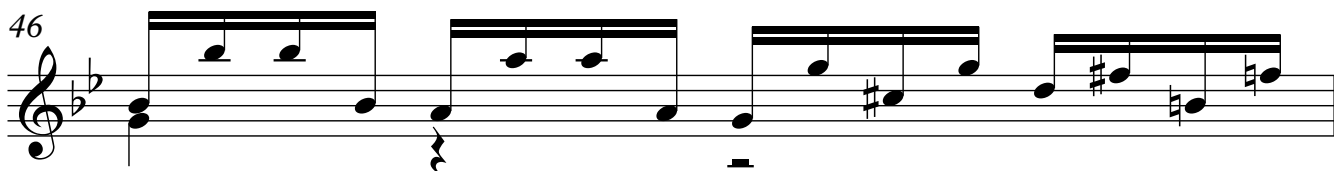
42



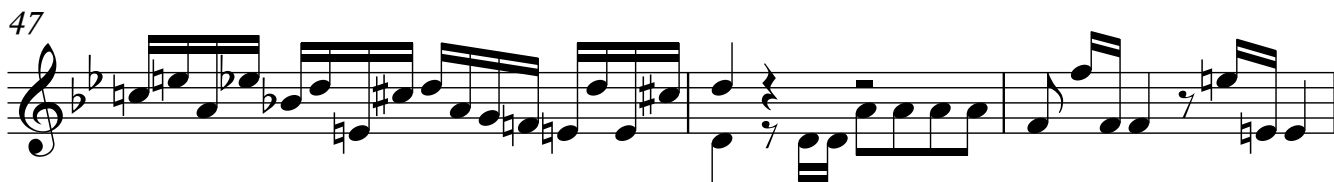
44



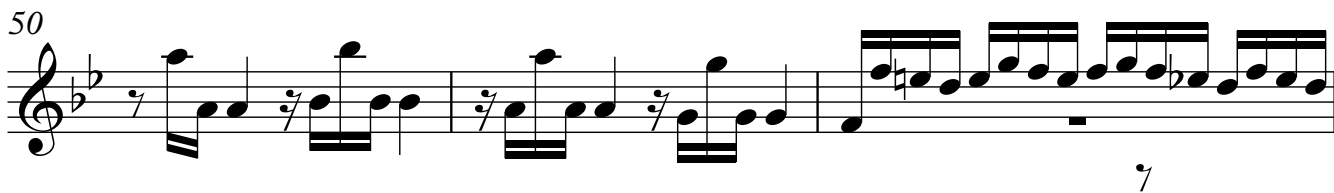
46



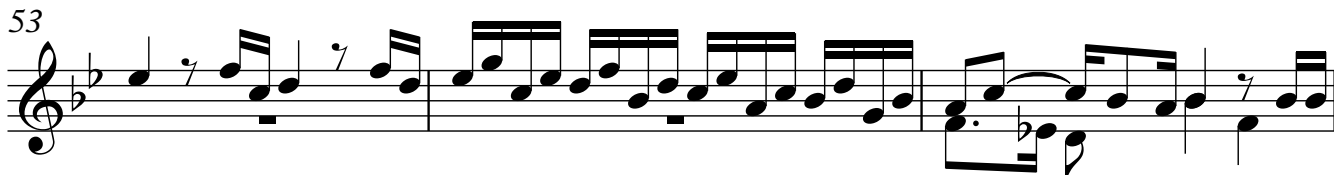
47



50



53



56

