

# Guitarra 2

## BWV - 1041

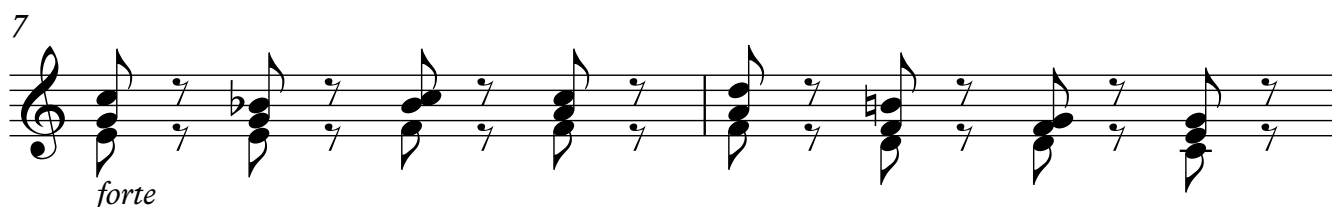
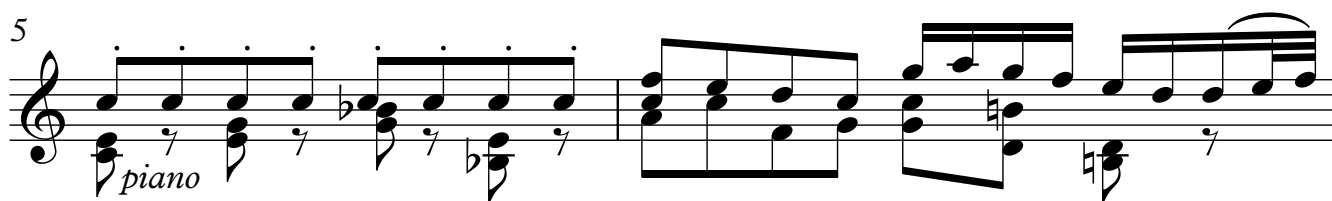
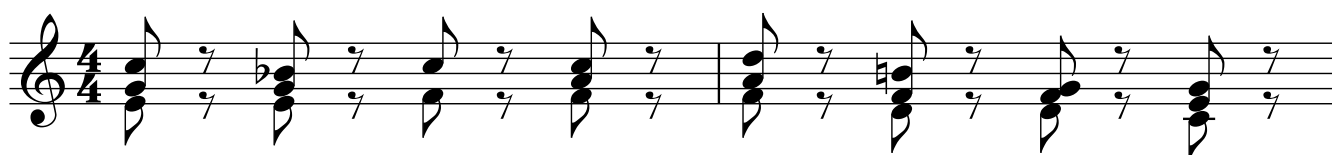
### CONCIERTO (c)

#### 2.- ANDANTE

TRANSCRIPCIÓN: LUIS ALVAREZ

J. S. BACH  
(1685-1750)

$\text{♩} = 35$



## Guitarra 2

11

13

15

*forte*

17

*piano*

19

21

*forte*

23

*piano*

Guitarra 2

25

26

27

29

*forte*

31

33

34

35

Musical notation for measures 35 and 36. Measure 35 features a treble clef, a key signature of one flat (B-flat), and a 7/8 time signature. The melody consists of eighth notes with stems pointing up, and the bass line consists of eighth notes with stems pointing down. Measure 36 contains a complex chordal structure with multiple beamed notes in both the treble and bass staves.

37

Musical notation for measures 37 and 38. Measure 37 continues the eighth-note pattern from the previous system. Measure 38 features a change in the bass line with a key signature change to two flats (B-flat and E-flat).

*forte*

39

Musical notation for measures 39 and 40. Measure 39 features a treble clef and a key signature of two flats. The melody is composed of eighth notes with stems pointing up, and the bass line consists of eighth notes with stems pointing down. Measure 40 continues this pattern.

*piano*

41

Musical notation for measures 41 and 42. Measure 41 features a treble clef and a key signature of two flats. The melody consists of eighth notes with stems pointing up, and the bass line consists of eighth notes with stems pointing down. Measure 42 continues this pattern.

42

Musical notation for measures 42 and 43. Measure 42 features a treble clef and a key signature of two flats. The melody consists of eighth notes with stems pointing up, and the bass line consists of eighth notes with stems pointing down. Measure 43 continues this pattern.

43

Musical notation for measures 43 and 44. Measure 43 features a treble clef and a key signature of two flats. The melody consists of eighth notes with stems pointing up, and the bass line consists of eighth notes with stems pointing down. Measure 44 continues this pattern.

*forte*

45

Musical notation for measures 45 and 46. Measure 45 features a treble clef and a key signature of two flats. The melody consists of eighth notes with stems pointing up, and the bass line consists of eighth notes with stems pointing down. Measure 46 continues this pattern.