

# Brandenburg Concerto No.5

## 3rd movement

J.S. Bach

Flute

2

3

Musical notation for measures 1-6 of the flute part. The key signature is D major (two sharps) and the time signature is 2/4. Measure 1 contains a whole note G4 with a fermata and a '2' above it. Measure 2 contains a quarter rest followed by a quarter note G4. Measure 3 contains a quarter note G4 with a fermata, followed by a quarter note F#4, and a triplet of eighth notes E4, D4, C4 with a '3' above them. Measure 4 contains a quarter note B3, followed by a quarter note A3, and a quarter note G3. Measure 5 contains a quarter note F#3, followed by a quarter note E3, and a quarter note D3. Measure 6 contains a quarter note C3, followed by a quarter note B2, and a quarter note A2.

7

3

Musical notation for measures 7-11 of the flute part. Measure 7 contains a triplet of eighth notes G4, F#4, E4 with a '3' above them. Measure 8 contains a quarter note D4, followed by a quarter note C4, and a quarter note B3. Measure 9 contains a quarter note A3, followed by a quarter note G3, and a quarter note F#3. Measure 10 contains a quarter note E3, followed by a quarter note D3, and a quarter note C3. Measure 11 contains a quarter note B2, followed by a quarter note A2, and a quarter note G2.

12

Musical notation for measures 12-15 of the flute part. Measure 12 contains a quarter note G2, followed by a quarter note F#2, and a quarter note E2. Measure 13 contains a half note G2 with a fermata. Measure 14 contains a half note F#2 with a fermata. Measure 15 contains a quarter note E2, followed by a quarter note D2, and a quarter note C2.

16

3

Musical notation for measures 16-19 of the flute part. Measure 16 contains a quarter note B2, followed by a quarter note A2, and a quarter note G2. Measure 17 contains a quarter note F#2, followed by a quarter note E2, and a quarter note D2. Measure 18 contains a triplet of eighth notes C2, B1, A1 with a '3' above them. Measure 19 contains a half note G1 with a fermata.

21

3

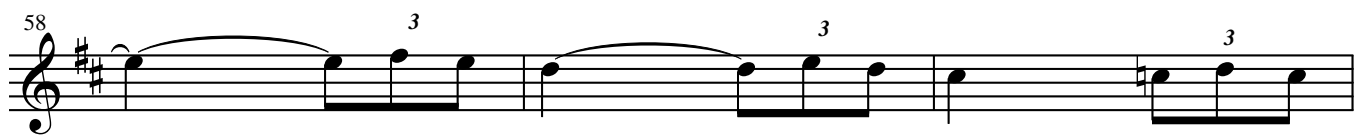
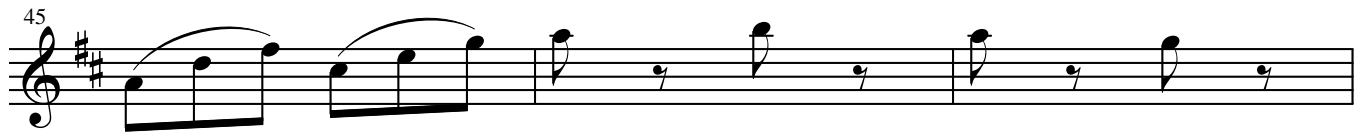
26

30

3

36

41



65



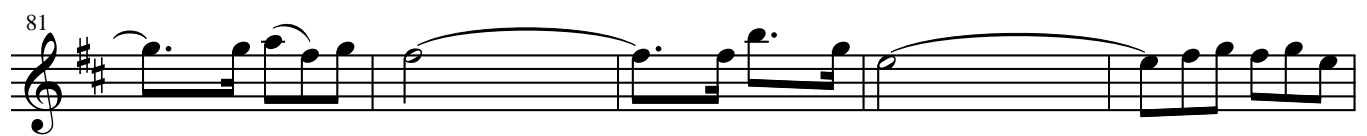
70



75



81



86

*piano*



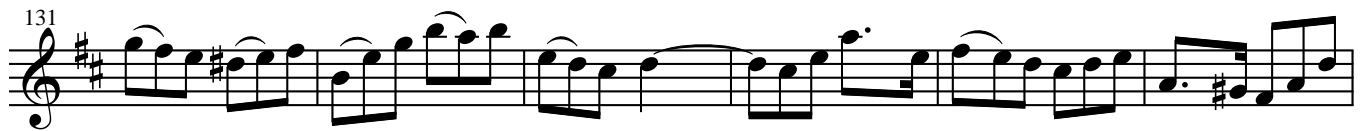
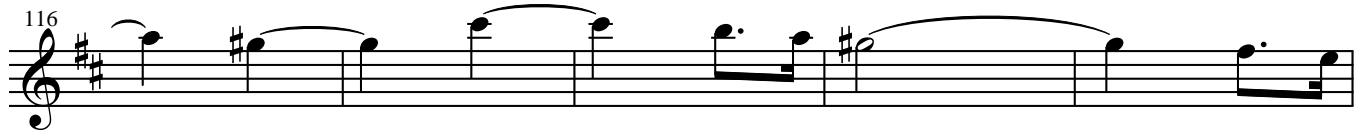
91

96

101

106

111



141

146

151

156

161



accomp.





207

232

2

3

239

3

245

3

249

3

Solo

254

3

258

262

268

274

Solo

277

