

# Double Concerto

BWV 1043

**J. S. BACH**

Transcription :

*Pierre Montreuille*

CLARINETTE 2

Vivace (♩ = 96)

4

7

9

11

14

18

21

3

*mf*

27

29

*f*

31

33

35

37

*p*

39

41

43

45

*f*

48



50



52



56



59



62



65



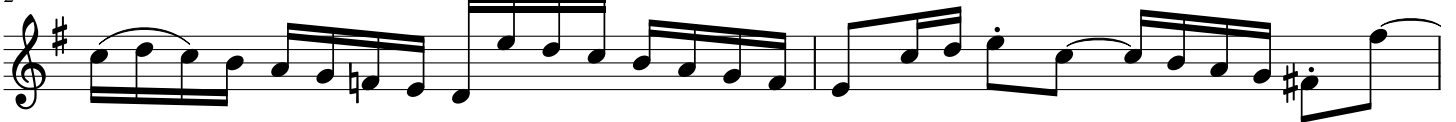
67



70



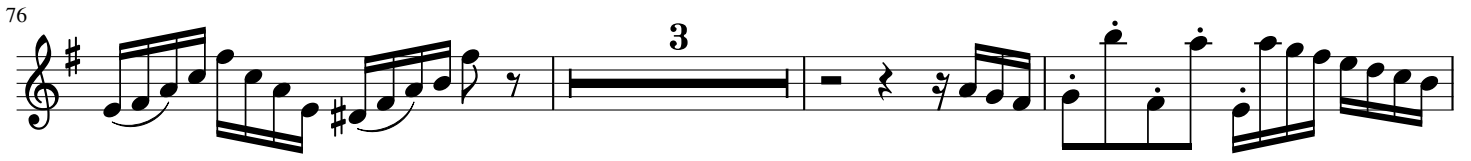
72



74



76



82



84



87

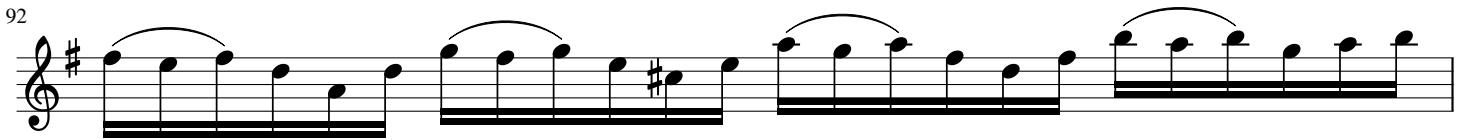


Largo ma non tanto (♩ = 94)

90



92



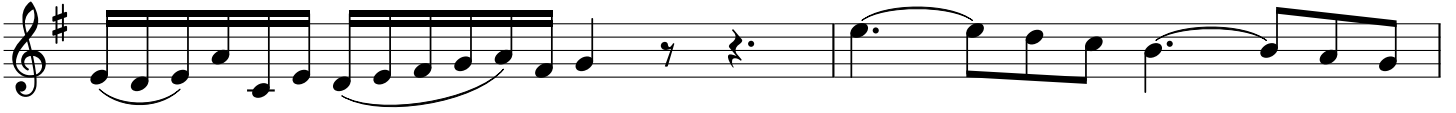
93



94



95



97



99



101



104



107



110



112



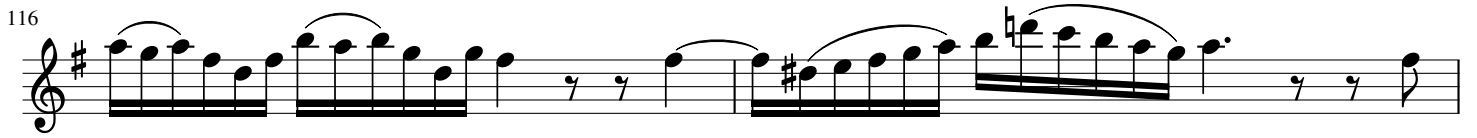
114



115



116



118



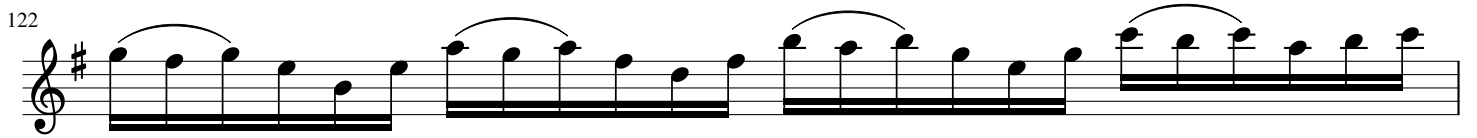
119



120



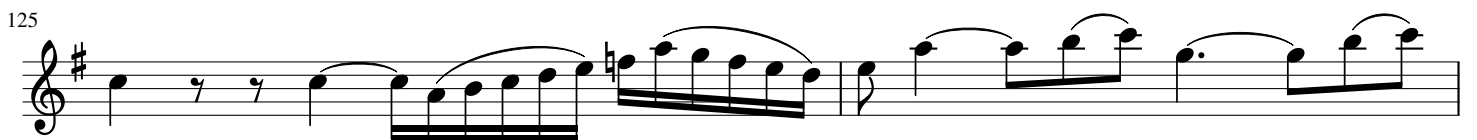
122



123



125



127



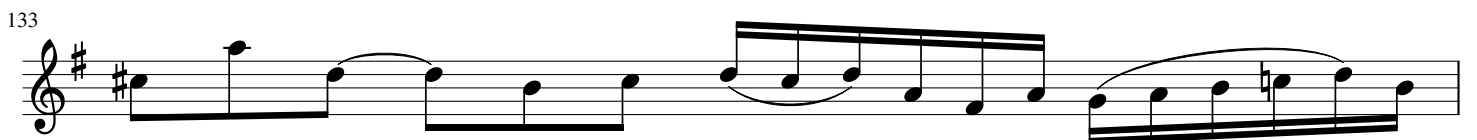
129



132



133



134

135

137

Allegro (♩ = 80)

140

144

149

152

154

157

160

3  
*mf*

167

170

173

176

179

*tr*

183

186

2

191

194

196



198

201

204

206

209

213

217

219

223

227

231

235

238

241

243

245

247

250

255

258

262

265

tr

269

272

275

tr

279

283

3

286

3

289

293