

# Fuga

De la "Toccatà & Fuga" BWV 540  
(Fugue à deux sujets)

César FRANCK

*Transcription*

*Pierre Montreuille*

## Violin I

(♩ = 69) **11** **A**

22 **B**

31 **C**

42 **D**

51 **E** 2° S

65 **F**

77 **G**

84

91

97 **H**

104

109 **I** **J** 4

120

127 **K**

133 **L**

141 **M**

146

151

156 **N**

164

Detailed description: This image shows a page of musical notation for the first violin part of J.S. Bach's Fuga BWV 540. The score is written on ten staves, each beginning with a measure number and a letter label in a box. The key signature is one flat (B-flat), and the time signature is 4/4. The notation includes various rhythmic values, accidentals, and articulation marks. The letters H through N are placed above specific measures, likely indicating harmonic or structural points. The piece concludes with a double bar line at measure 164.

# Fuga

De la "Toccatà & Fuga" BWV 540  
(Fugue à deux sujets)

César FRANCK

*Transcription*

*Pierre Montreuille*

Violin II

(♩ = 69) 17 **A** 12 **B**

39 **C**

48 **D**

57

65 **E** 2<sup>e</sup> S

73

80 **F**

87 **G**

94 **H** 2

103 3 **I** 9 **J**

121

128 **K** **L**

137 **M**

148 **N** 5

161

167

# Fuga

De la "Tocatta & Fuga" BWV 540  
(Fugue à deux sujets)

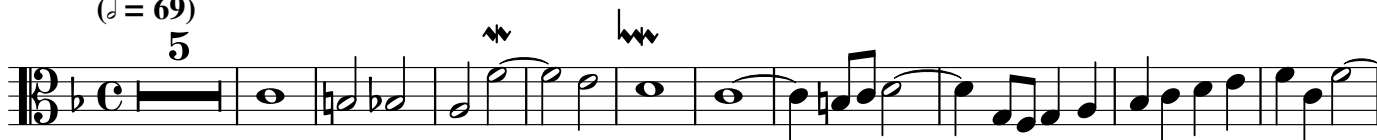
César FRANCK

*Transcription*

*Pierre Montreuille*

Viola

(♩ = 69)  
5



16

**A**



27

**B**



34

**C**



45

3



56

**D**



65

**E** (2<sup>e</sup> S)

**F**

10



84

3

**G**



95

**H** 2



105



110 **I**

117 **J** 8 **K**

133 **L**

140 **M** 7

154 **N**

159

165 2

# Fuga

De la "Toccatà & Fuga" BWV 540  
(Fugue à deux sujets)

César FRANCK

*Transcription*

*Pierre Montreuil*

Violoncelle

(♩ = 69)

11

19

25

47

90

103

114

118

A

B

C

D

E<sup>(2° S)</sup>

F

G

H

I

J

122

125

**K** 4 **L** 9

143

**M**

149

6 **N** 8

167



# Fuga

De la "Tocatta & Fuga" BWV 540  
(Fugue à deux sujets)

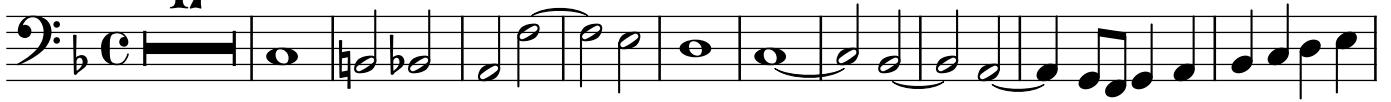
César FRANCK

Transcription  
Pierre Montreuil

Contrebasse

(♩ = 69)

17 **A**



28

**B**



38

**C**

4



52

**D**



63

**E** (2<sup>e</sup> S)

63 **L**



135



142

**M**

3



154

**N**



161

