

Continuo.

Cantate.

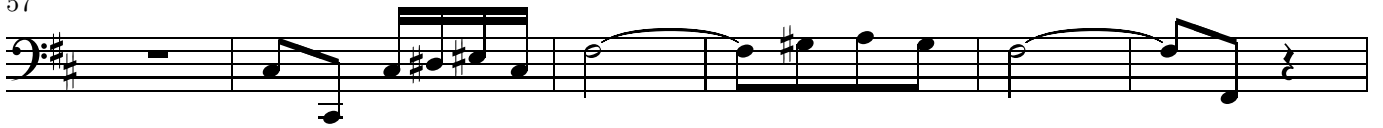
Non sa che sia dolore.

Sinfonia.

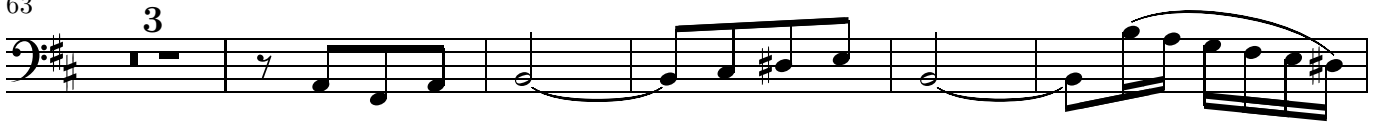
Bach

The image displays a musical score for a Continuo part, titled "Sinfonia." and "Cantate. Non sa che sia dolore." by Johann Sebastian Bach. The score is written in bass clef with a key signature of one sharp (F#) and a time signature of 2/4. The music is divided into measures, with measure numbers 6, 11, 15, 20, 25, 30, 35, 40, 44, 48, and 52 indicated at the beginning of their respective lines. The notation includes various rhythmic values such as eighth and sixteenth notes, rests, and slurs. The piece concludes with a final measure at measure 52.

57



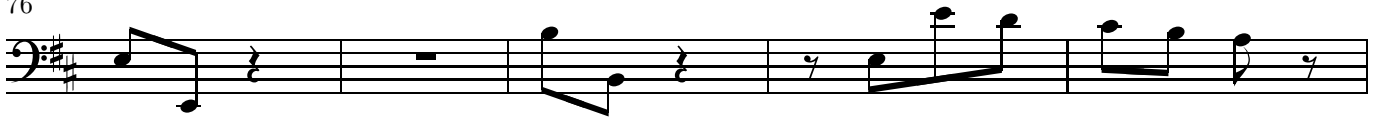
63



71



76



81



86



90



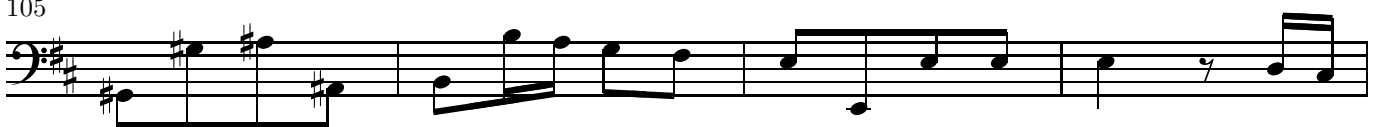
95



99



105

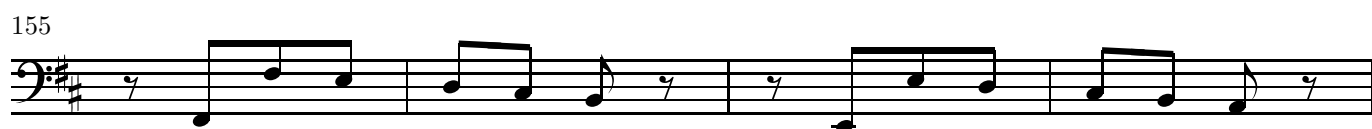
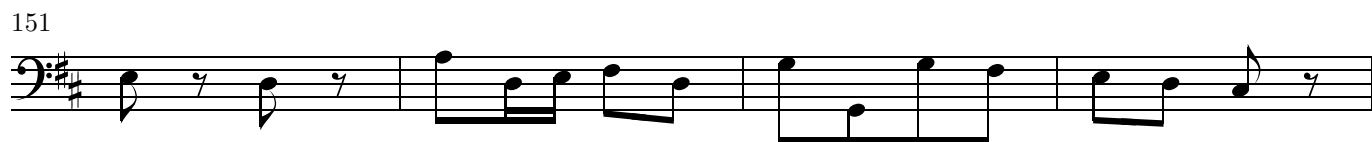
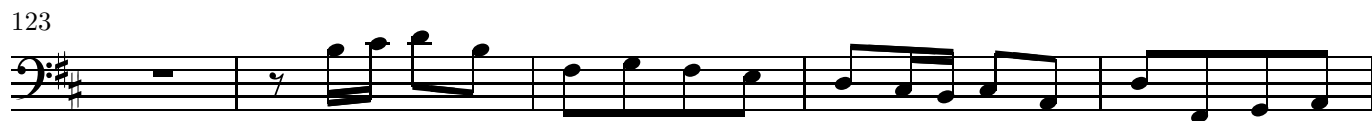


109



114

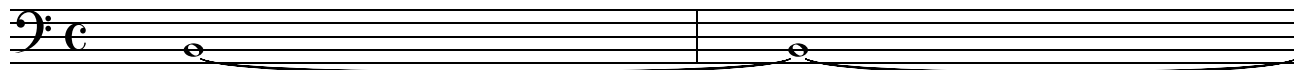




Da Capo

Continuo.

Recitative.



3



7



Continuo.

Arie.

Musical score for Continuo, Arie, measures 1-19. The score is written in bass clef with a key signature of one sharp (F#) and a common time signature (C). The music consists of a single melodic line with various rhythmic values and accidentals.

Measures 1-19:

- Measure 1: Starts with a half note G2, followed by quarter notes A2, B2, C3, D3, E3, F#3, G3, A3, B3, C4, D4, E4, F#4, G4, A4, B4, C5.
- Measure 2: Quarter notes G4, A4, B4, C5, D5, E5, F#5, G5, A5, B5, C6, D6, E6, F#6, G6, A6, B6, C7.
- Measure 3: Quarter notes G6, A6, B6, C7, D7, E7, F#7, G7, A7, B7, C8, D8, E8, F#8, G8, A8, B8, C9.
- Measure 4: Quarter notes G8, A8, B8, C9, D9, E9, F#9, G9, A9, B9, C10, D10, E10, F#10, G10, A10, B10, C11.
- Measure 5: Quarter notes G10, A10, B10, C11, D11, E11, F#11, G11, A11, B11, C12, D12, E12, F#12, G12, A12, B12, C13.
- Measure 6: Quarter notes G12, A12, B12, C13, D13, E13, F#13, G13, A13, B13, C14, D14, E14, F#14, G14, A14, B14, C15.
- Measure 7: Quarter notes G14, A14, B14, C15, D15, E15, F#15, G15, A15, B15, C16, D16, E16, F#16, G16, A16, B16, C17.
- Measure 8: Quarter notes G16, A16, B16, C17, D17, E17, F#17, G17, A17, B17, C18, D18, E18, F#18, G18, A18, B18, C19.
- Measure 9: Quarter notes G18, A18, B18, C19, D19, E19, F#19, G19, A19, B19, C20, D20, E20, F#20, G20, A20, B20, C21.
- Measure 10: Quarter notes G20, A20, B20, C21, D21, E21, F#21, G21, A21, B21, C22, D22, E22, F#22, G22, A22, B22, C23.
- Measure 11: Quarter notes G22, A22, B22, C23, D23, E23, F#23, G23, A23, B23, C24, D24, E24, F#24, G24, A24, B24, C25.
- Measure 12: Quarter notes G24, A24, B24, C25, D25, E25, F#25, G25, A25, B25, C26, D26, E26, F#26, G26, A26, B26, C27.
- Measure 13: Quarter notes G26, A26, B26, C27, D27, E27, F#27, G27, A27, B27, C28, D28, E28, F#28, G28, A28, B28, C29.
- Measure 14: Quarter notes G28, A28, B28, C29, D29, E29, F#29, G29, A29, B29, C30, D30, E30, F#30, G30, A30, B30, C31.
- Measure 15: Quarter notes G30, A30, B30, C31, D31, E31, F#31, G31, A31, B31, C32, D32, E32, F#32, G32, A32, B32, C33.
- Measure 16: Quarter notes G32, A32, B32, C33, D33, E33, F#33, G33, A33, B33, C34, D34, E34, F#34, G34, A34, B34, C35.
- Measure 17: Quarter notes G34, A34, B34, C35, D35, E35, F#35, G35, A35, B35, C36, D36, E36, F#36, G36, A36, B36, C37.
- Measure 18: Quarter notes G36, A36, B36, C37, D37, E37, F#37, G37, A37, B37, C38, D38, E38, F#38, G38, A38, B38, C39.
- Measure 19: Quarter notes G38, A38, B38, C39, D39, E39, F#39, G39, A39, B39, C40, D40, E40, F#40, G40, A40, B40, C41.

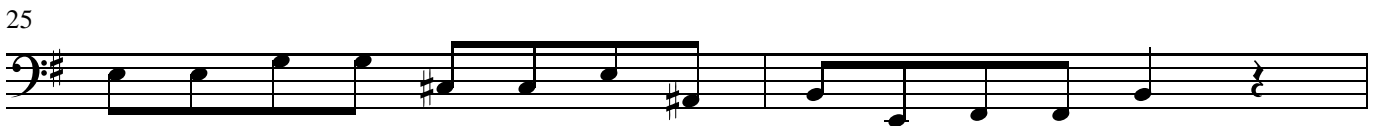
21



23



25



27



29



31



33



35



37



39



41



43

46

49

52

54

57

59

61

63

65

68

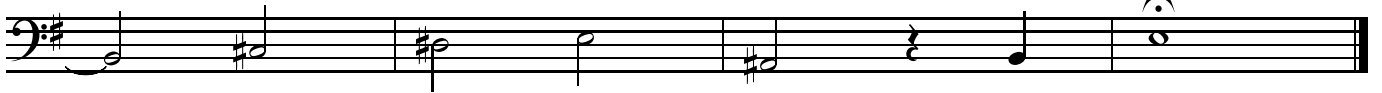
Da Capo.

Continuo.

Recitativ.



4



Arie.



6



13



23



30

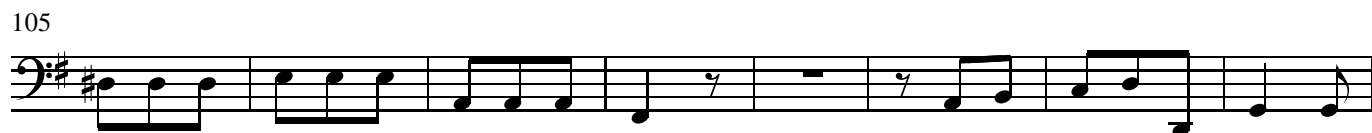
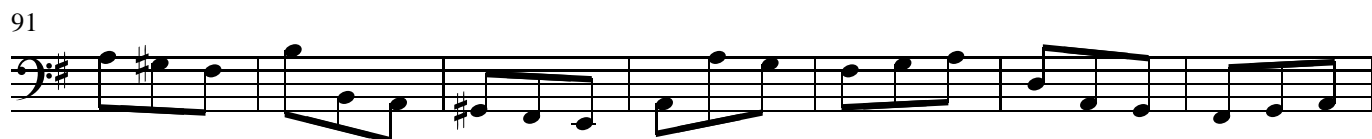


37



44





10

113



120



127



134



141



148



155



163



170



177



Da Capo