

Flauto
Traverso

Cantate.

Non sa che sia dolore.

Bach

Sinfonia. 16

20

24 *tr*

29

33

36

39

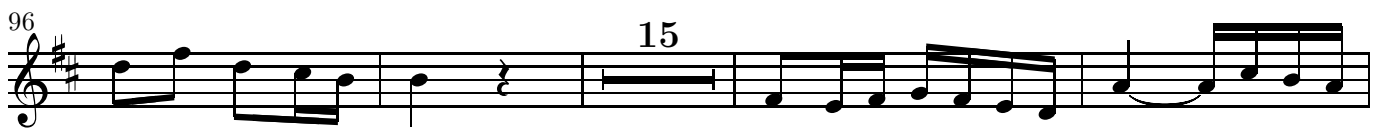
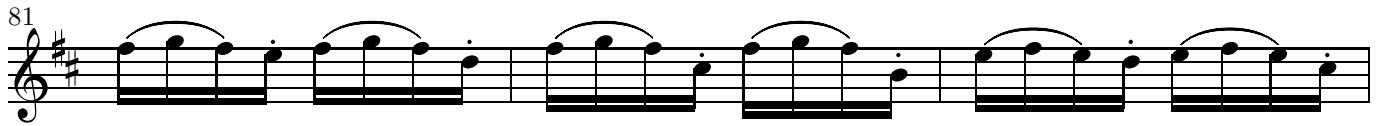
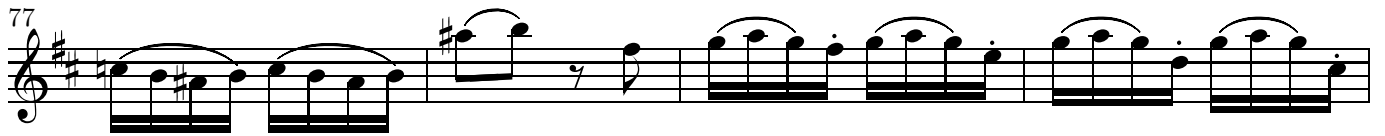
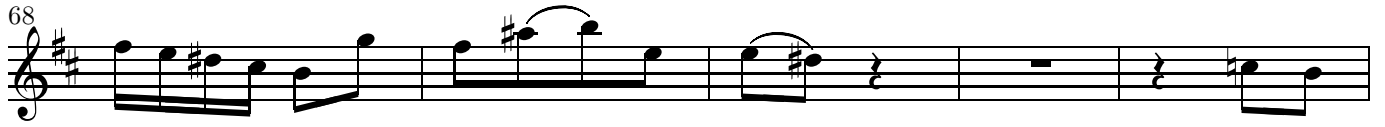
43

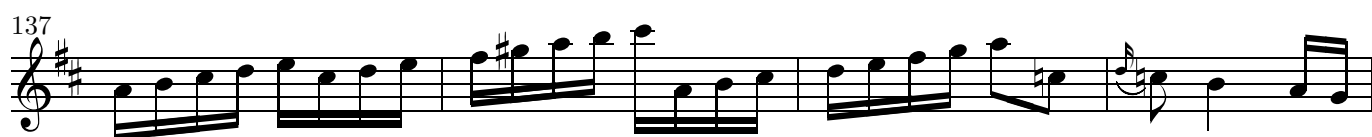
47

51 2

57

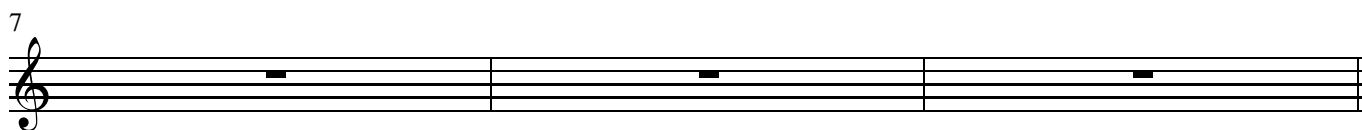
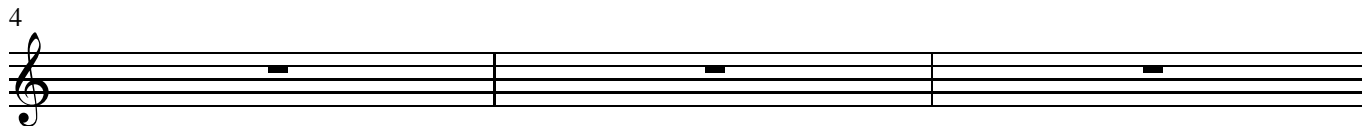
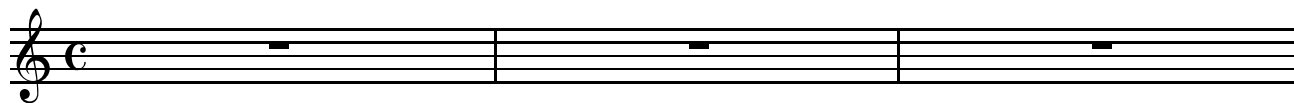
61





Flauto
Traverso

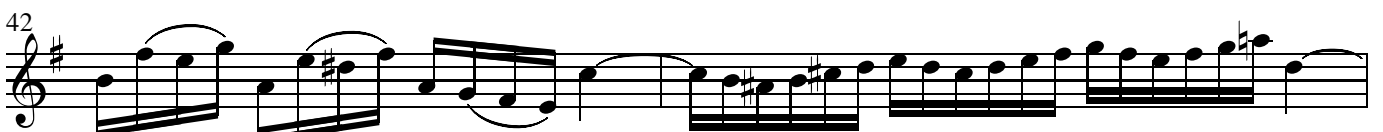
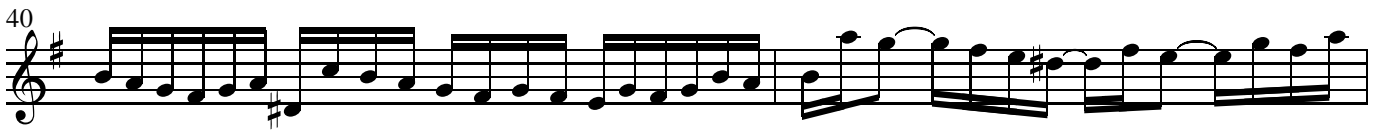
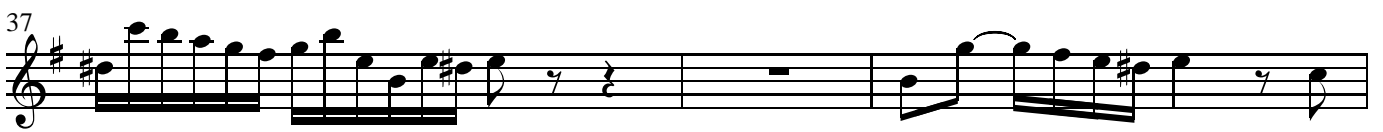
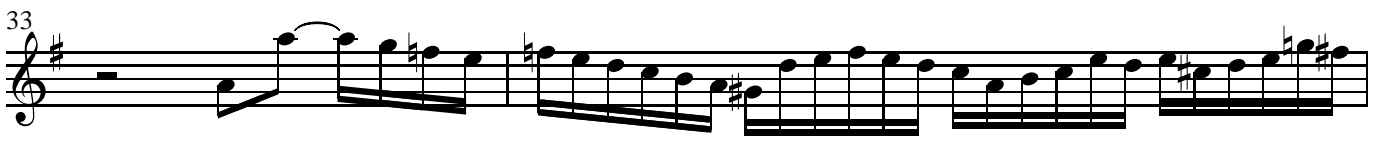
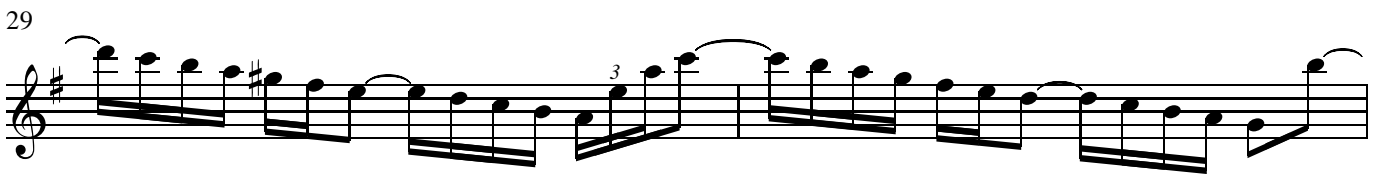
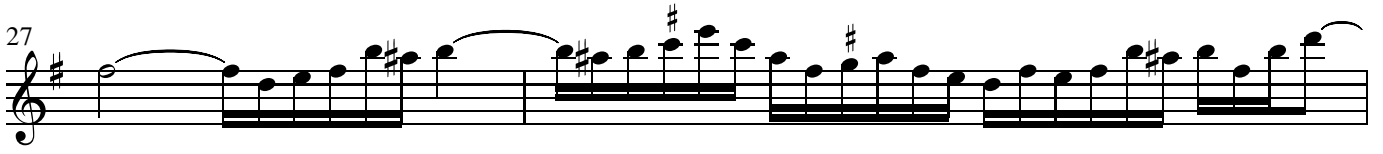
Recitative.



Flauto
Traverso

Arie.

The image shows a musical score for a flute part, labeled 'Arie.' (Aria). The score is written in G major (one sharp) and common time (C). It consists of ten staves of music, numbered 1 through 20. The key signature is G major. The time signature is common time. The music features various rhythmic patterns, including eighth and sixteenth notes, and rests. There are several triplet markings (3) above groups of notes. The score is presented in a clean, black-and-white format.



Musical score for Johann Sebastian Bach's "Non sa che sia dolore". The score is written in treble clef with a key signature of one sharp (F#) and a common time signature (C). The piece consists of 69 measures, divided into ten staves. The notation includes various rhythmic values, slurs, and trills. The first staff (measures 46-47) begins with a treble clef and a key signature of one sharp. The second staff (measures 48-49) continues the melodic line. The third staff (measures 50-51) features a measure with a fermata and a trill. The fourth staff (measures 52-53) includes two trills marked with a '3'. The fifth staff (measures 55-56) shows a measure with a fermata. The sixth staff (measures 57-58) continues the melodic development. The seventh staff (measures 60-61) features a measure with a fermata. The eighth staff (measures 62-63) shows a measure with a fermata. The ninth staff (measures 65-66) continues the melodic line. The tenth staff (measures 67-69) concludes the piece with a final cadence.

Flauto
Traverso

Recitativ. 8 Arie. 15

28

33

38

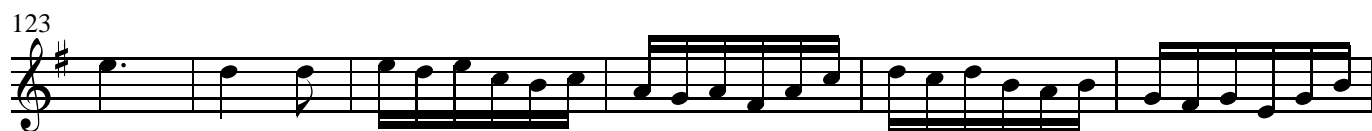
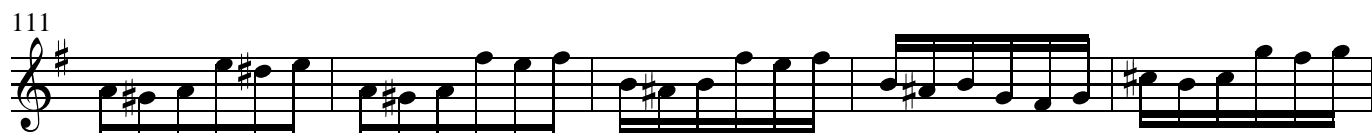
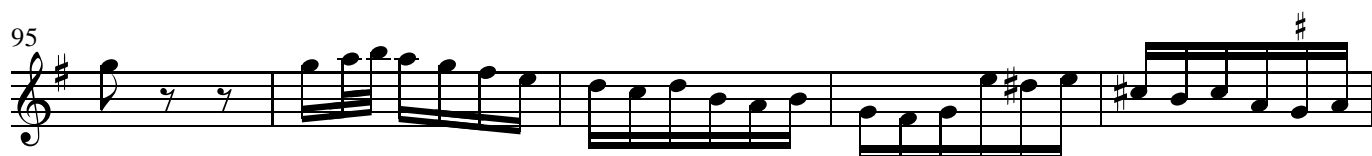
43

49

57

64

69



129

134

142

149

155

160

166

172

179

185