

# FUGA

SOPRANO

8 (♩ = 80) A

6

10 B 2 C

17

21

24 D

27

31

# PRELUDIUM

BWV 861

**J.S. BACH**

(Original en sol mineur)

ALTO

Transcription  
Pierre Montreuille

(♩ = 52)

tr

4

5

6 A

7 B

10 C

12

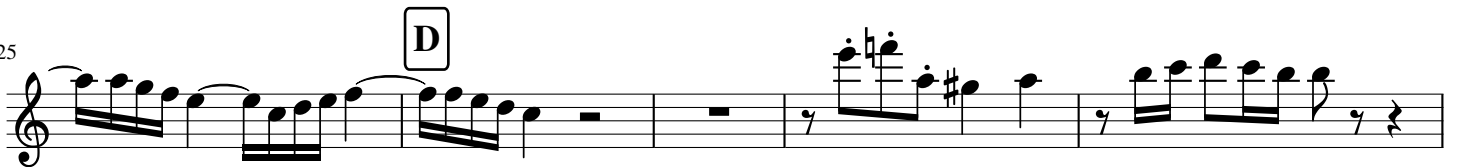
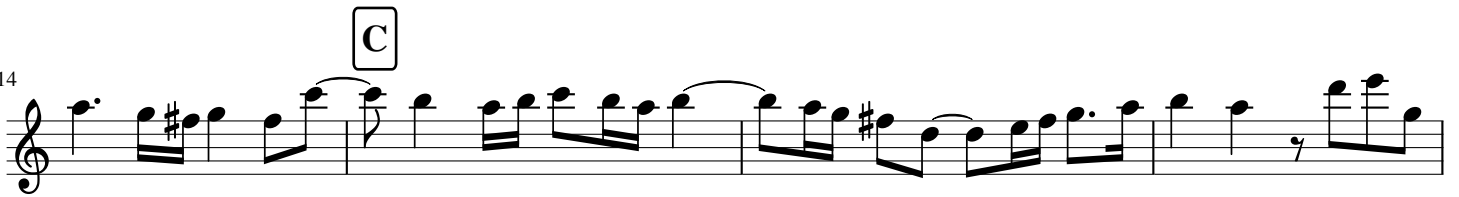
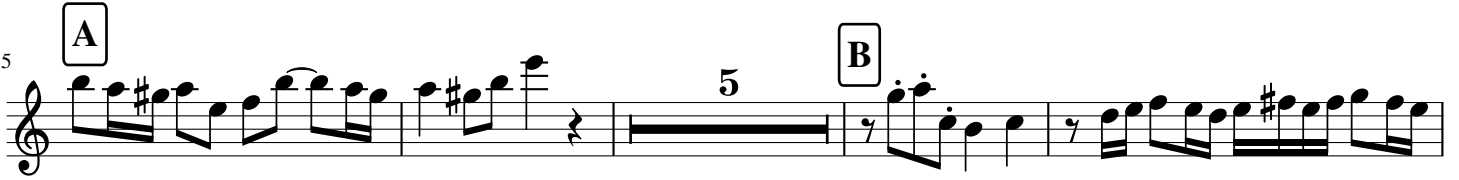
15

18

# FUGA

ALTO

(♩ = 80)



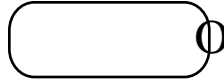
# PRELUDIUM

BWV 861

(Original en sol mineur)

**J.S. BACH**

ans ir ion  
ierre on œuille



(♩ = 52)

# FUGA

TENOR

4 **A**

9 **B**

14 **C**

18 **D**

7

28

33

# PRELUDIUM

BWV 861

(Original en sol mineur)

**J.S. BACH**

ans ir ion  
ierre on œuille

BA O

(♩ = 52)

Musical score for the Prelude in G minor, BWV 861 by J.S. Bach. The score is written for a single bass clef staff in common time (C). It begins with a tempo marking of quarter note = 52. The piece features a series of eighth-note patterns in the right hand and a more melodic line in the left hand. There are three marked sections: A, B, and C. Section A is a short phrase. Section B is a trill. Section C is another trill. The piece concludes with a final cadence.

# FUGA

BASSON

4 A

9 B

14 C

18

21

24 D

27

32