

# Sonate en trio

BWV 530

Violin

J S BACH

Transcription  
Pierre Montreuille

(♩ = 92)

9

19 **A**

26

35 **B**

41

47

53 **C**

60

69 **D**

78 **E**

86

96 **F**

105

113

122 **G**

131 **H**

138

144

150 **I**

156

164

172

181 (♩ = 80)

185

188

192

196

202

204

210

215

219

223

(♩ = 96)

228

232

236

A

239

B

243

248

252

C

256

260

264 **D**

267

271

274 **E**

278

282

286

290 **F**

294 **G**

298

Detailed description: This image shows a page of musical notation for the first violin part of J.S. Bach's BWV 530. The score is written in treble clef with a key signature of one sharp (F#). It consists of ten staves of music, each starting with a measure number. The notation includes various rhythmic values such as eighth and sixteenth notes, rests, and slurs. There are also fermatas and accents. Chord diagrams are provided for measures 264, 274, 290, and 294, labeled with the letters D, E, F, and G respectively. The piece concludes with a fermata on the final note of the tenth staff.

# Sonate en trio

BWV 530

Viola

J S BACH

Transcription  
Pierre Montreuille

(♩ = 92)

9

19 **A**

28

34 **B**

44 **C**

54

62

71 **D** 2

82

E

88

94

100

F

106

115

125

G

135

H

141

147

153

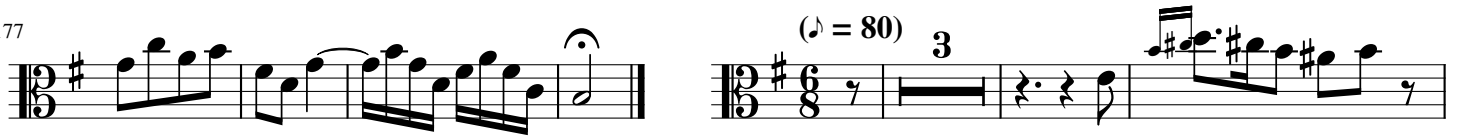
I

160

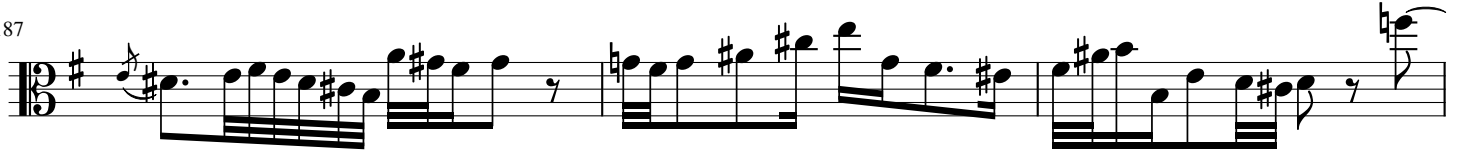
168



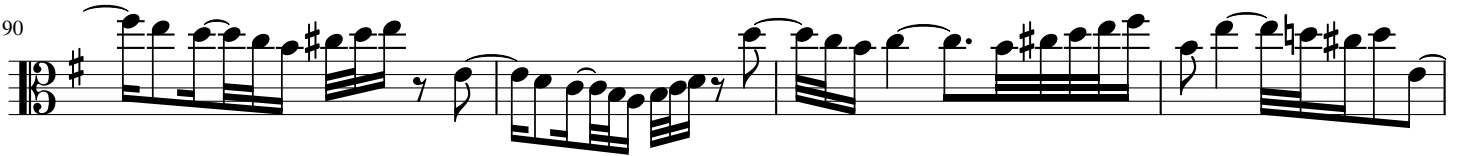
177



187



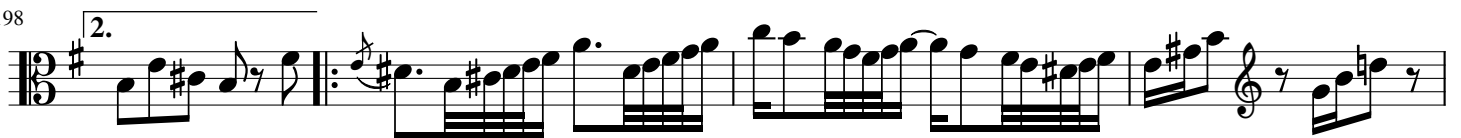
190



194



198



202



205



208



212



215



219





223 2. (♩ = 96)

227

229

232

235 A

238

241 B

245

250

254 C

258

261

264

D



268



271



274

E



278



282



285



288

F



291



294

G



297



# Sonate en trio

BWV 530

Violoncello

**J S BACH**

*Transcription  
Pierre Montreuille*

(♩ = 92)

11

24

35

50

62

73

79

90

105

113

119

126

G

133

H

147

I

162

173

(♩ = 80)

184

190

195

1. 2.

201

206

212

218

224 (♩ = 96)

229

234

239

243

247

251

255 **C**

260

265 **D**

269

273 **E**

278

283

287 **F**

292 **G**

297