

Guitarra 2

OPUS - 193

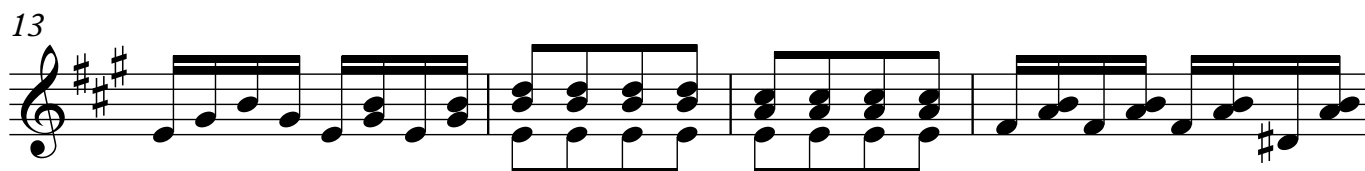
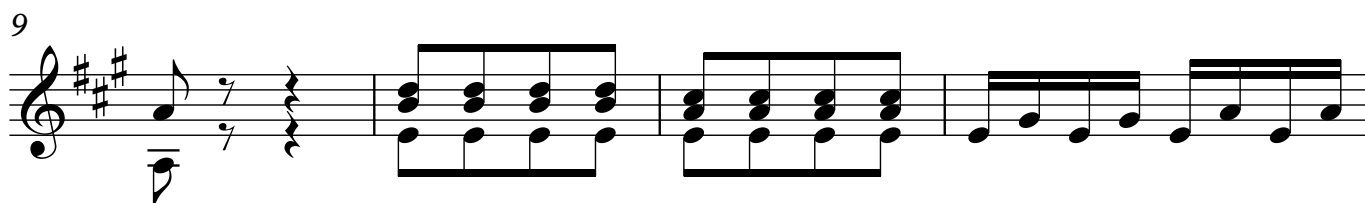
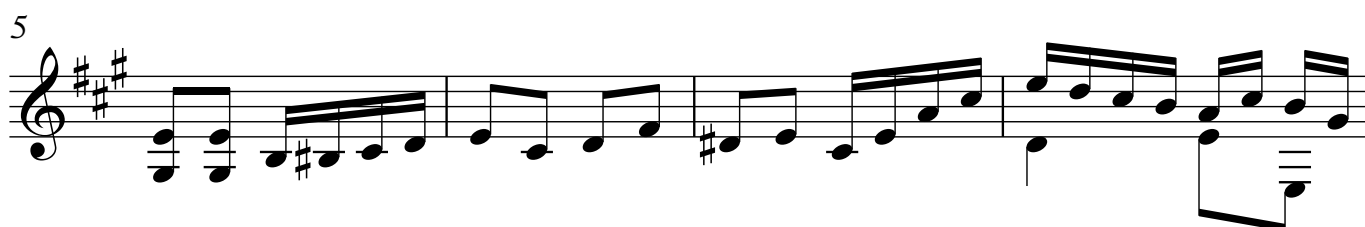
SEIS CONTRADANZAS

NUMERO 1

TRANSCRIPCIÓN: LUIS ALVAREZ

FERNANDO CARULLI
(1770-1841)

♩ = 80



17

Musical notation for guitar part 2, measures 17-20. The key signature is three sharps (F#, C#, G#). Measure 17 starts with a treble clef, a key signature of three sharps, and a 7/8 time signature. The first measure contains a chord of F#4, C#5, and G#5. The subsequent measures contain eighth and sixteenth notes, with some beamed sixteenth notes. Measure 20 ends with a double bar line.

21

Musical notation for guitar part 2, measures 21-24. The key signature is three sharps (F#, C#, G#). Measure 21 starts with a treble clef, a key signature of three sharps, and a 7/8 time signature. The first measure contains a chord of F#4, C#5, and G#5. The subsequent measures contain eighth and sixteenth notes, with some beamed sixteenth notes. Measure 24 ends with a double bar line.

25

Musical notation for guitar part 2, measures 25-28. The key signature is three sharps (F#, C#, G#). Measure 25 starts with a treble clef, a key signature of three sharps, and a 7/8 time signature. The first measure contains a chord of F#4, C#5, and G#5. The subsequent measures contain eighth and sixteenth notes, with some beamed sixteenth notes. Measure 28 ends with a double bar line.

29

Musical notation for guitar part 2, measures 29-32. The key signature is three sharps (F#, C#, G#). Measure 29 starts with a treble clef, a key signature of three sharps, and a 7/8 time signature. The first measure contains a chord of F#4, C#5, and G#5. The subsequent measures contain eighth and sixteenth notes, with some beamed sixteenth notes. Measure 32 ends with a double bar line.

33

Musical notation for guitar part 2, measures 33-37. The key signature is three sharps (F#, C#, G#). Measure 33 starts with a treble clef, a key signature of three sharps, and a 7/8 time signature. The first measure contains a chord of F#4, C#5, and G#5. The subsequent measures contain eighth and sixteenth notes, with some beamed sixteenth notes. Measure 37 ends with a double bar line.

38

Musical notation for guitar part 2, measures 38-41. The key signature is three sharps (F#, C#, G#). Measure 38 starts with a treble clef, a key signature of three sharps, and a 7/8 time signature. The first measure contains a chord of F#4, C#5, and G#5. The subsequent measures contain eighth and sixteenth notes, with some beamed sixteenth notes. Measure 41 ends with a double bar line.