

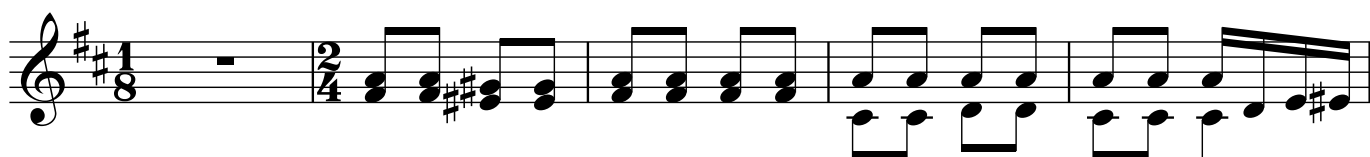
Guitarra 2

OPUS - 193 SEIS CONTRADANZAS NUMERO 2

TRANSCRIPCIÓN: LUIS ALVAREZ

FERNANDO CARULLI
(1770-1841)

♩ = 80



21

Musical notation for guitar part 2, measures 21-25. The staff is in treble clef with a key signature of two sharps (F# and C#). The music consists of a series of chords and melodic lines, including a triplet of eighth notes in measure 25.

26

Musical notation for guitar part 2, measures 26-30. The staff is in treble clef with a key signature of two sharps (F# and C#). The music consists of a series of chords and melodic lines, including a triplet of eighth notes in measure 30.

31

Musical notation for guitar part 2, measures 31-35. The staff is in treble clef with a key signature of two sharps (F# and C#). The music consists of a series of chords and melodic lines, including a triplet of eighth notes in measure 35.

36

Musical notation for guitar part 2, measures 36-40. The staff is in treble clef with a key signature of two sharps (F# and C#). The music consists of a series of chords and melodic lines, including a triplet of eighth notes in measure 40.

41

Musical notation for guitar part 2, measures 41-45. The staff is in treble clef with a key signature of two sharps (F# and C#). The music consists of a series of chords and melodic lines, including a triplet of eighth notes in measure 45.

46

Musical notation for guitar part 2, measures 46-50. The staff is in treble clef with a key signature of two sharps (F# and C#). The music consists of a series of chords and melodic lines, ending with a double bar line in measure 50.