

Domenico Cimarosa  
Il Matrimonio Segreto, Overture

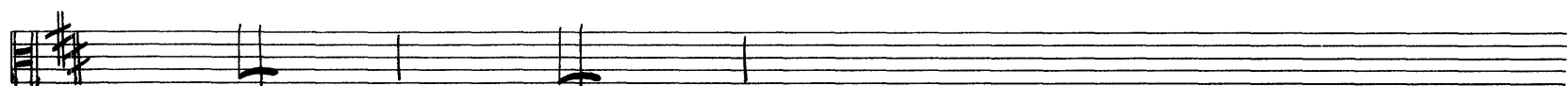
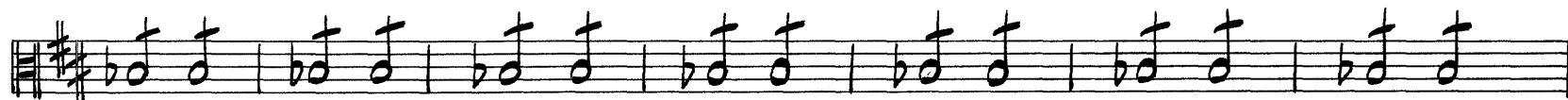
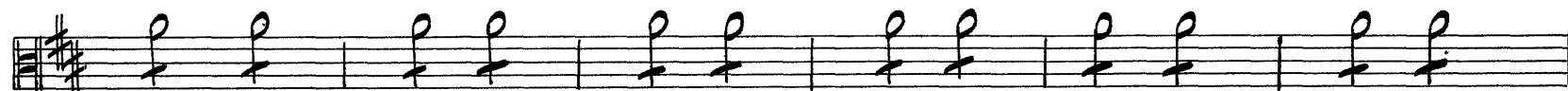
Viola

*Largo.*

*Allegro molto.*

The musical score for Viola is written in D major (two sharps) and 2/4 time. It begins with a *Largo* tempo and transitions to *Allegro molto*. The score consists of eight staves of music. The first staff contains the initial chords and a dynamic marking *f*. The second and third staves feature a melodic line with various ornaments and dynamics. The fourth staff continues the melodic line. The fifth and sixth staves show a sustained harmonic accompaniment with slurs. The seventh and eighth staves feature a rhythmic accompaniment with a dynamic marking *f*.

VIOLA



I Viol. H I Viol. H T.S.

VIOLA

4

(8)

The musical score for the Viola part consists of ten staves of music. The key signature is two sharps (F# and C#), and the time signature is 4/4. The score begins with a dynamic marking of *p* (piano) and a first ending bracket labeled (8). The first staff contains a melodic line with a *p* dynamic. The second staff continues the melody with a *ff* (fortissimo) dynamic. The third staff features a rhythmic pattern of eighth notes. The fourth and fifth staves show a melodic line with a *f* (forte) dynamic. The sixth and seventh staves contain a melodic line with a *sf* (sforzando) dynamic. The eighth staff has a *p* dynamic. The ninth and tenth staves conclude the passage with a *f* dynamic and a final chord marked with a double bar line and a repeat sign.

VIOLA

The musical score for Viola consists of ten staves of notation. The key signature is one sharp (F#) and the time signature is 4/4. The score includes various dynamics such as *p*, *sf*, *f*, and *cresc.*. It also features performance markings like *tr.* (trills) and *v.s.* (ritardando). The notation includes a variety of note values, rests, and articulation marks.

6

VIOLA

12) *p legato.*

*cresc.*

VIOLA

The musical score for Viola in Cimarosa's *Il Matrimonio Segreto*, page 7, is written in G major. It consists of ten staves of music. The first staff begins with a half note chord (G4, B4, D5) and a slur over the next two notes. The second staff features a series of eighth notes, followed by two measures of rests indicated by double slashes. The third staff contains a sequence of eighth notes with accents and dynamic markings of *sf*. The fourth and fifth staves show a melodic line with eighth notes and slurs, starting with a dynamic of *f*. The sixth staff has a half note chord (G4, B4, D5) followed by eighth notes, with dynamic markings of *p* and *sf*. The seventh staff continues the melodic line with slurs and dynamic markings of *sf*, *p*, *sf*, and *sf*. The eighth staff features a melodic line with slurs and dynamic markings of *sf*, *sf*, *sf*, and *cresc.*. The ninth staff has a half note chord (G4, B4, D5) followed by eighth notes, with dynamic markings of *p* and *cresc.*. The tenth staff concludes with a melodic line and a first ending bracket, marked with a dynamic of *f*.

VIOLA

