

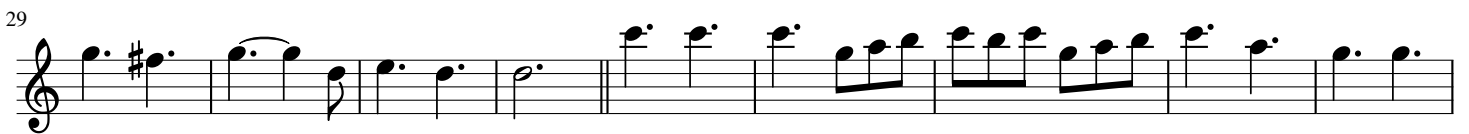
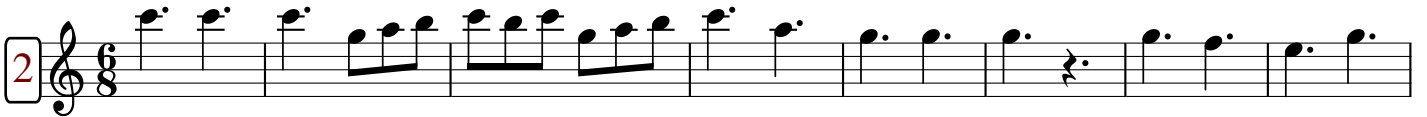
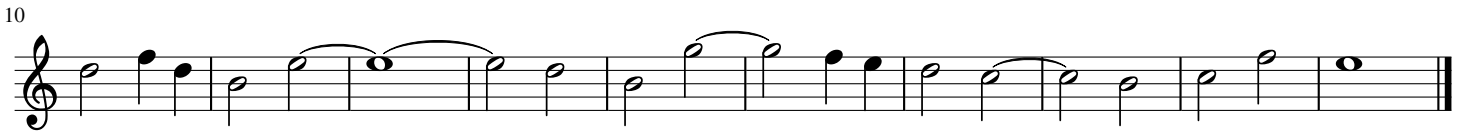
Suite

(1784)

Flute

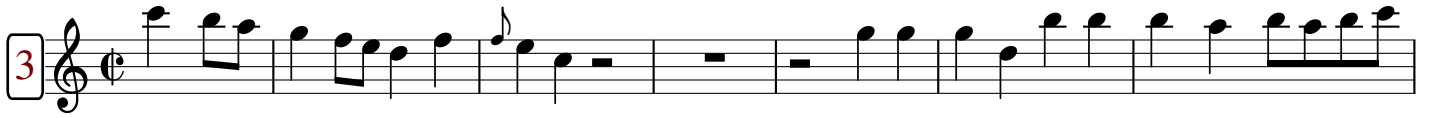
Michel CORRETTE

*Transcription & annotations
Pierre Montreuille*





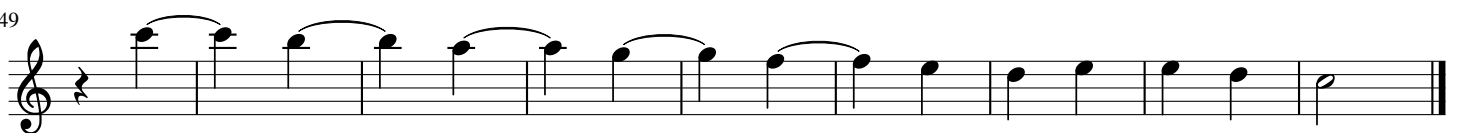
D.C. al Fine



Fine



D.C. al Fine



5

10

20

Fine

33

39

D.C. al Fine

6

11

Fine

20

D.C. al Fine

7

11 Fine 2

18

D.C. al Fine

8

13

26

38

46

Oboe

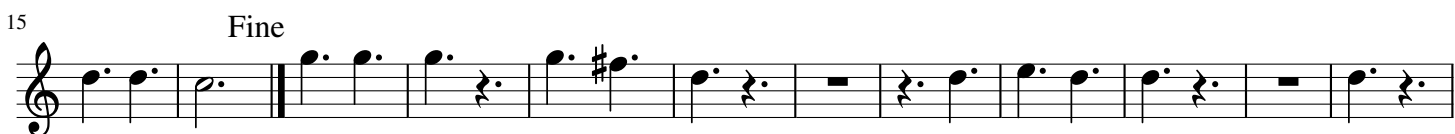
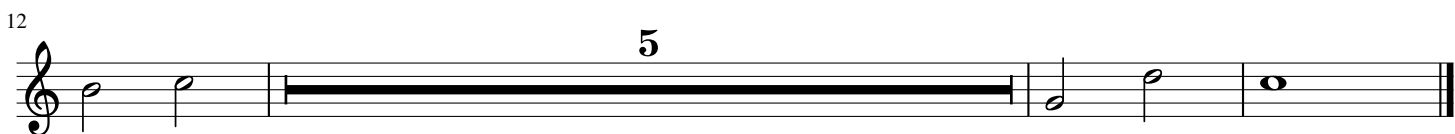
Suite

(1784)

Michel CORRETTE

Transcription & annotations

Pierre Montreuille



3 2 4

12 3 Fine 2

24 4 2 2 D.C. al Fine

4 12

23 3

38

51

5 2 3 9

22 Fine 2 3 12 D.C. al Fine

6 2

11 Fine

22 D.C. al Fine

7

11 Fine

4

24 D.C. al Fine

8

3

12 Fine

8 2

32

2 3 7

53 D.C. al Fine

Suite

(1784)

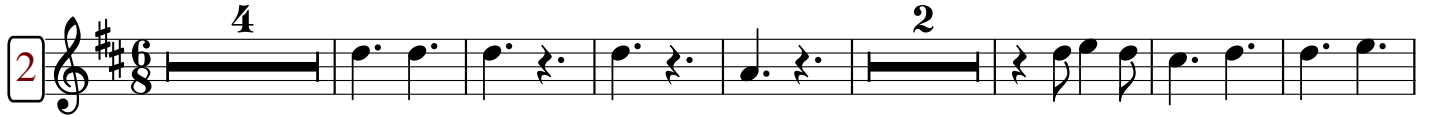
B \flat Clarinet

Michel CORRETTE

*Transcription & annotations
Pierre Montreuille*



10



14



24



37



48



58



D.C. al Fine

3 **9** **9** **6**
Fine

28 **6**
D.C. al Fine

4 **3**

12 **3**

26 **6**

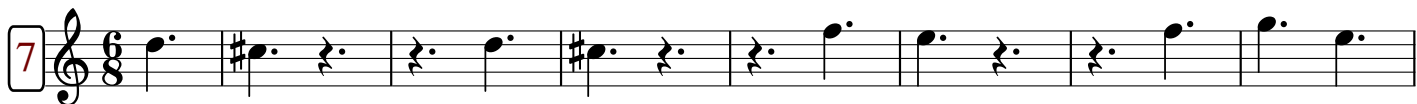
43 **3**

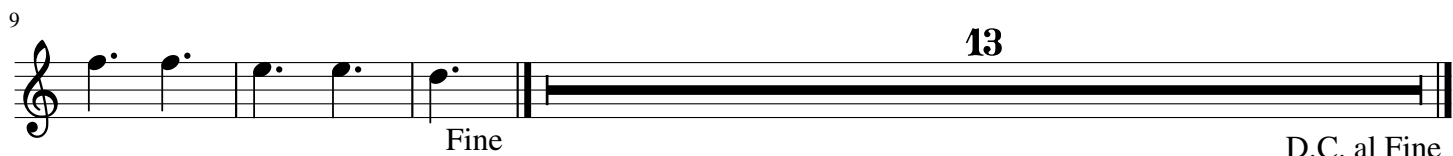
5 **8** **2**

15 **5** **8** **12**
Fine D.C. al Fine

6 **13** **4**
Fine

21 **4**
D.C. al Fine

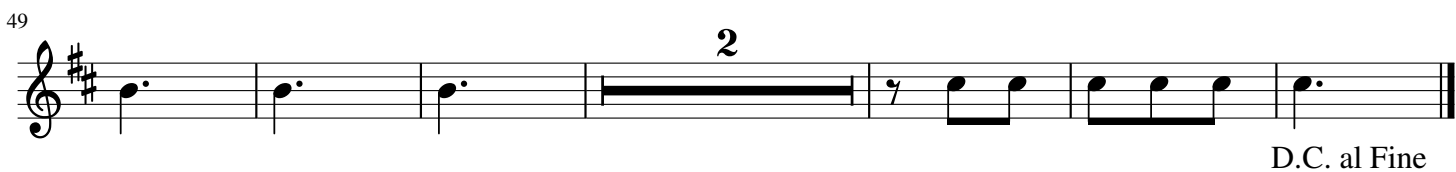
7 

9 

8 

17 

33 

49 

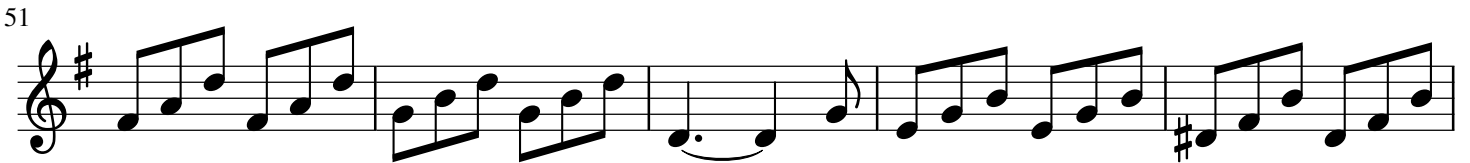
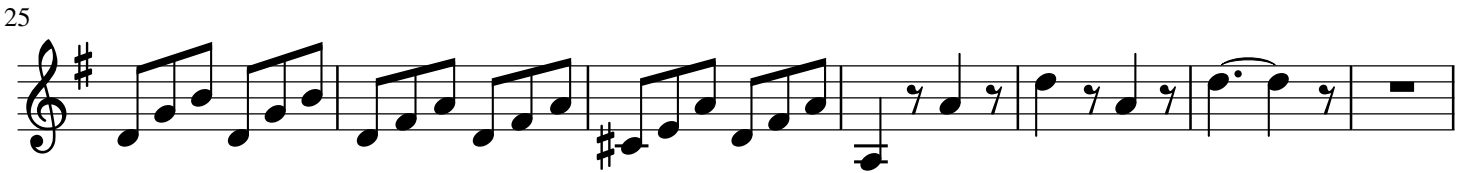
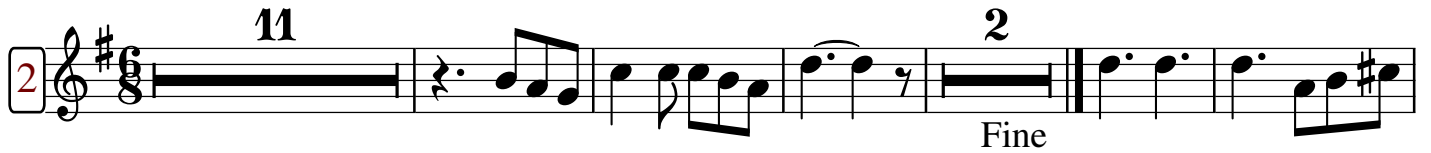
Suite

(1784)

Horn in F

Michel CORRETTE

*Transcription & annotations
Pierre Montreuille*



61

D.C. al Fine

10

Fine

19

23

28

32

D.C. al Fine

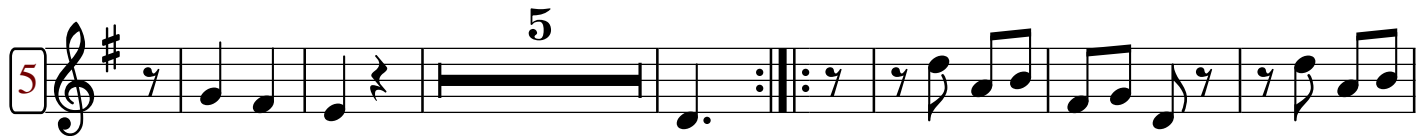
22

30

41



48



14



21



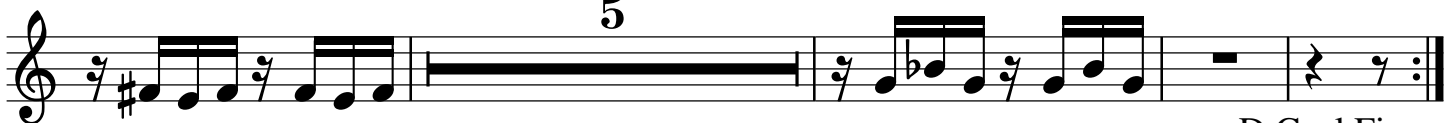
28



32



36

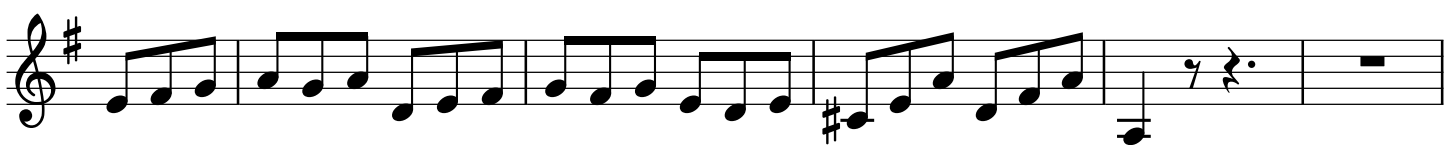


D.C. al Fine



2 Fine

14



20

D.C. al Fine

Fine

12

D.C. al Fine

22

Fine

33

55

D.C. al Fine

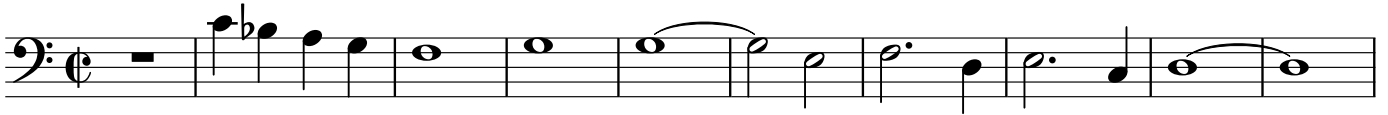
Suite

(1784)

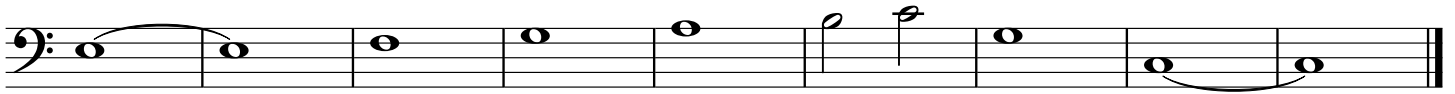
Bassoon

Michel CORRETTE

*Transcription & annotations
Pierre Montreuille*



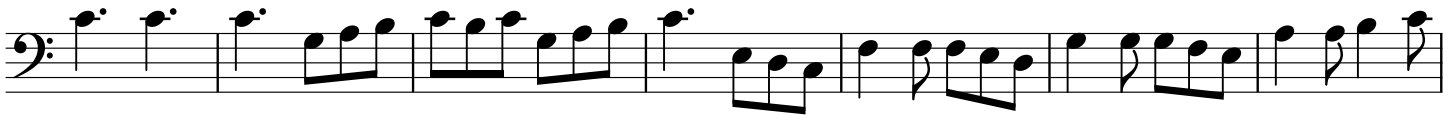
11



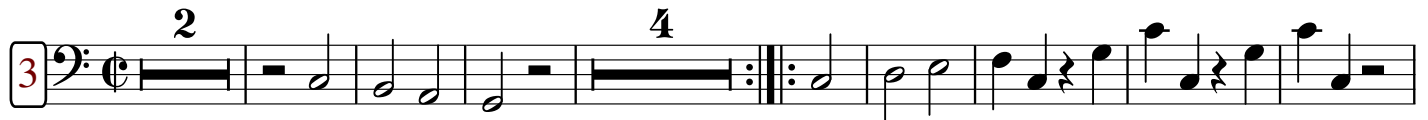
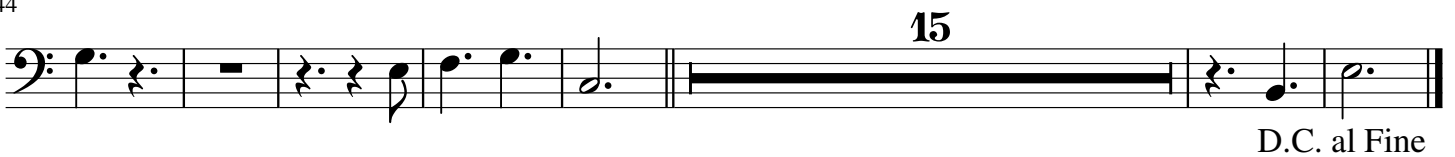
11



37



44



15



26

D.C. al Fine

21

31

49

19

Fine

37

D.C. al Fine

11

Fine

D.C. al Fine

7 **6**

Fine

12

19

D.C. al Fine

8 **3/8**

11 **9**

28

Fine

39 **4**

50

D.C. al Fine