

Guitarra 1

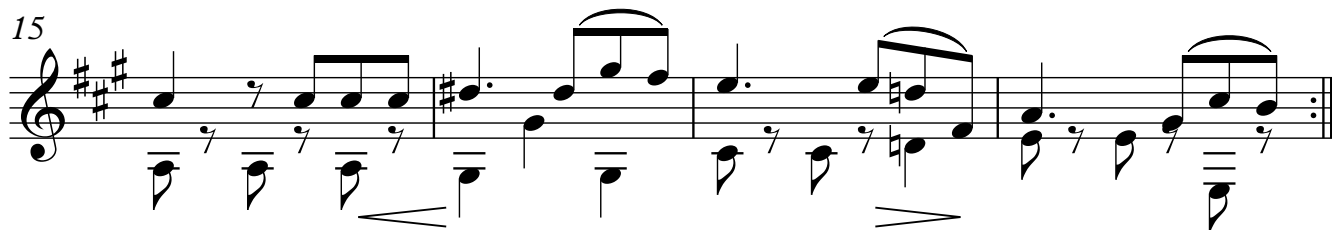
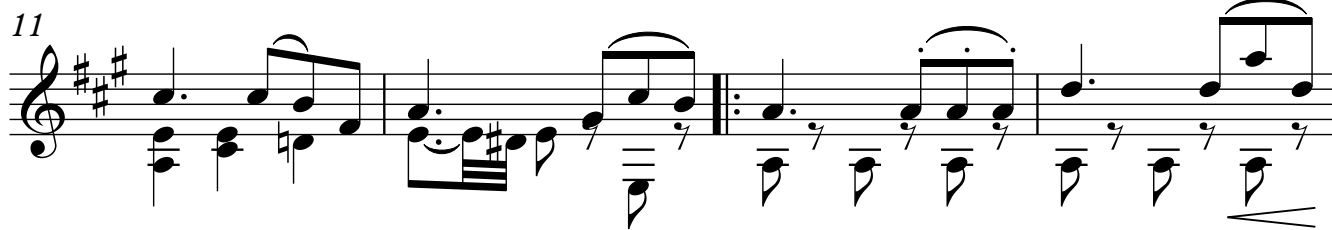
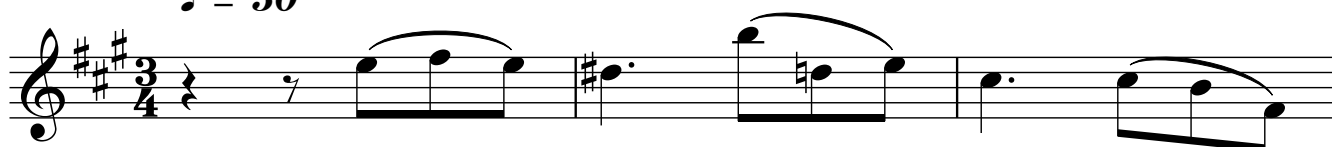
OPUS - 25

RECRETS Y CONSOLATIONS

TRANSCRIPCIÓN: LUIS ALVAREZ

NAPOLEON COSTE
(1805-1833)

♩ = 50



Guitarra 1

Musical score for Guitarra 1, measures 23-45. The score is written in treble clef with a key signature of three sharps (F#, C#, G#). The music features a complex rhythmic pattern with frequent sixteenth notes and eighth notes, often beamed together. Measure 23 starts with a treble staff containing a quarter note G4, followed by eighth notes A4, B4, C5, and a quarter rest. The bass staff has a quarter note G2, followed by eighth notes A2, B2, C3, and a quarter rest. Measure 27 shows a melodic line in the treble staff with a slur over the first four notes (G4, A4, B4, C5) and a quarter rest. The bass staff has a quarter note G2, followed by eighth notes A2, B2, C3, and a quarter rest. Measure 29 features a treble staff with a slur over the first four notes (G4, A4, B4, C5) and a quarter rest. The bass staff has a quarter note G2, followed by eighth notes A2, B2, C3, and a quarter rest. Measure 31 has a treble staff with a slur over the first four notes (G4, A4, B4, C5) and a quarter rest. The bass staff has a quarter note G2, followed by eighth notes A2, B2, C3, and a quarter rest. Measure 35 shows a treble staff with a quarter note G4, followed by eighth notes A4, B4, C5, and a quarter rest. The bass staff has a quarter note G2, followed by eighth notes A2, B2, C3, and a quarter rest. Measure 37 has a treble staff with a quarter note G4, followed by eighth notes A4, B4, C5, and a quarter rest. The bass staff has a quarter note G2, followed by eighth notes A2, B2, C3, and a quarter rest. Measure 39 features a treble staff with a slur over the first four notes (G4, A4, B4, C5) and a quarter rest. The bass staff has a quarter note G2, followed by eighth notes A2, B2, C3, and a quarter rest. Measure 42 shows a treble staff with a slur over the first four notes (G4, A4, B4, C5) and a quarter rest. The bass staff has a quarter note G2, followed by eighth notes A2, B2, C3, and a quarter rest. Measure 45 has a treble staff with a slur over the first four notes (G4, A4, B4, C5) and a quarter rest. The bass staff has a quarter note G2, followed by eighth notes A2, B2, C3, and a quarter rest. The score includes various musical notations such as slurs, ties, and dynamic markings like 'f' (forte) and 'a' (accents).