

SINFONIA No. 53 (L'Impériale)

JOSEPH HAYDN
(Ed. Helmut Schultze)

I

Largo maestoso

6

13

26

33

39

44

49



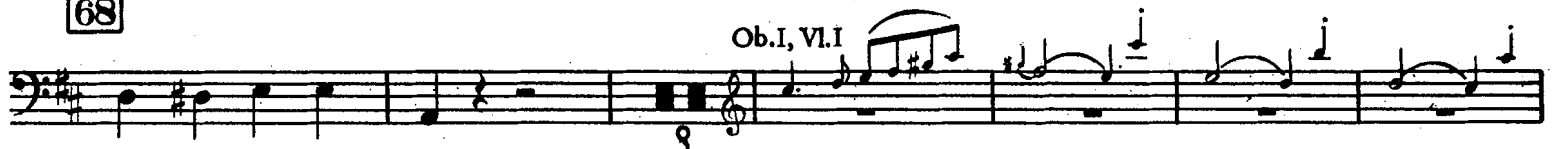
55



62



68



82



89



95



Fagotto

101

8 *f*

115

3 *p*

121

3 *p*

137

p *f*

144

12 1.VI.

162

f 8

176

p 7 *f*

190

p

198



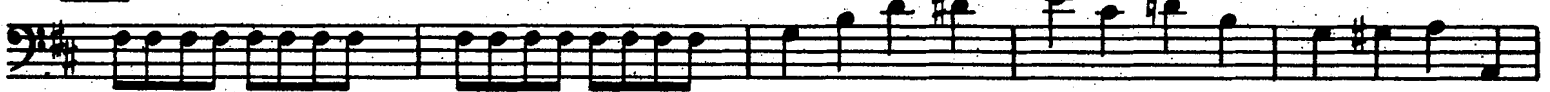
200



205



210



215



229



236



241



Fagotto

II

Andante

Musical score for Bassoon II, Andante, measures 25-123. The score is written in bass clef with a key signature of two sharps (F# and C#) and a 2/4 time signature. It consists of ten staves of music. Measure numbers 25, 69, 77, 84, 91, 98, 105, 111, 117, and 123 are indicated in boxes at the beginning of their respective staves. The music features various rhythmic patterns, including eighth and sixteenth notes, and rests. Dynamic markings include *p* (piano) at measures 32, 111, and 117. There are also markings for *7* (sevens) and *32* (trills) in the first two staves. The score concludes with first and second endings at measures 117 and 123.

III

Menuetto

Musical staff for Menuetto, measures 1-6. The key signature is one sharp (F#) and the time signature is 3/4. The piece begins with a forte (*f*) dynamic. The melody consists of eighth notes and quarter notes.

7

Musical staff for Menuetto, measures 7-13. Measure 7 is marked with a piano (*p*) dynamic. Measures 8-10 feature a melodic line with slurs and accents. Measure 11 is marked with a forte (*f*) dynamic. The staff ends with a double bar line.

14

Musical staff for Menuetto, measures 14-19. Measures 14-16 feature a melodic line with slurs. Measures 17-19 continue with eighth notes.

20

Musical staff for Menuetto, measures 20-27. Measures 20-22 feature eighth notes. Measures 23-27 feature a melodic line with slurs and accents. The staff ends with a double bar line. A pianissimo (*pp*) dynamic is indicated below the staff.

28

Musical staff for Menuetto, measures 28-36. The staff features a melodic line with slurs and accents, primarily consisting of quarter notes.

37

Musical staff for Menuetto, measures 37-42. Measures 37-40 feature a melodic line with slurs and accents. Measure 41 is marked with a forte (*f*) dynamic. The staff ends with a double bar line.

Trio

43

Musical staff for Trio, measures 43-49. Measure 43 is marked with a forte (*f*) dynamic. Measure 44 features a Flute (*Fl.*) part. Measures 45-49 feature a melodic line with slurs and accents. The staff ends with a double bar line.

7

13

Menuetto da Capo

IV

Version A*)

Finale. Capriccio

Moderato

15

27

34

51

61

74

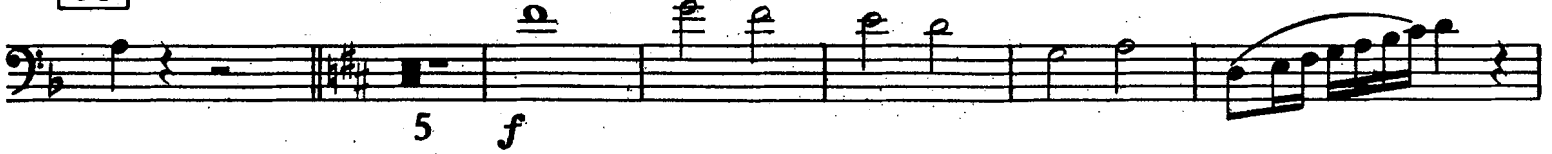
81

*) Fassung der Eszterházy-Stimmen

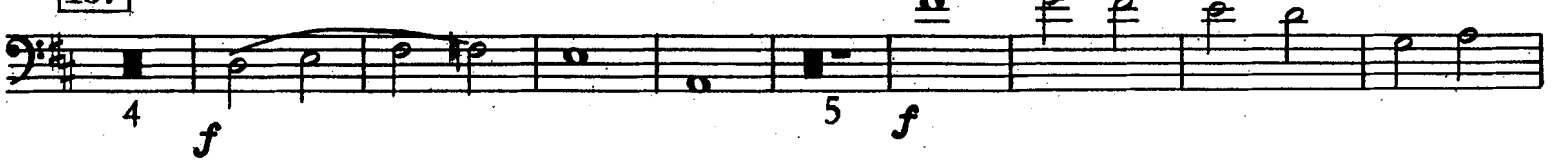
89



96



107



124



129



143



149



155



2 Fagotti

Version B*)

Presto
(a2)

8

14

20

27 (a2)

31

38

48

61

67

f *p* *f* *p* *crescendo* *f* *ff* *p* *f* *f*

*) Fassung der meisten alten Mss.

2 Fagotti

73

4 *f* 3 *f* 3 *f* *p*

88

fp *f* 7 VI.I *pp*

103

f *f* *f*

111

f (a2) *p* (a2)

118

(a2) *f*

124

f 4

134

(a2) 7 *p* (a2)

148

4 *f*

157

p

162

f

Fine