

Dalm Bixio
COLLEZIONE

DUE POT-POURRIS

PER

due Flauti

sopra motivi dell' Opera

LA FORZA DEL DESTINO

DI G. VERDI

Composti da

E. KRAKAMP

34932 Primo Pot-pourri Fr. 3.

Prop. dell' Editore

34933 Secondo Pot-pourri Fr. 2.50



MILANO, R. Stabilimento Nazionale TITO di G. RICORDI
Firenze, Ricordi e Jouhaud. Napoli, Ricordi e Clausetti. Torino, Giusti e Strada. Mendrisio, Bustelli-Rossi.

LA FORZA DEL DESTINO

DI

G. VERDI.

2^o Pot=pourri.

E. Krakamp.

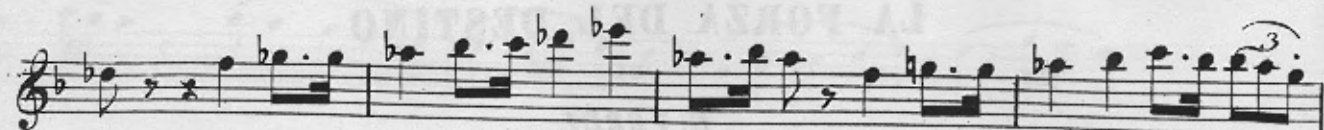
FLAUTO I^o

Allegro.



Dim. dante sostenuto





Allegro



Allegro vivo

FLAUTO I^o

The musical score for Flauto I consists of ten staves of music. The key signature is one flat (B-flat). The notation includes various note values, rests, and dynamic markings such as 'p' and 'q'. The music is written in a single system.

LA FORZA DEL DESTINO

DI

G. VERDI.

2º Pot=pourri.

E. Krakamp.

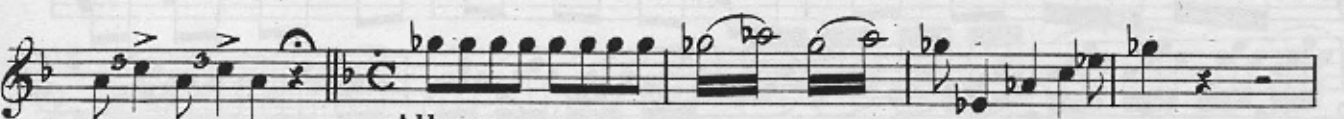
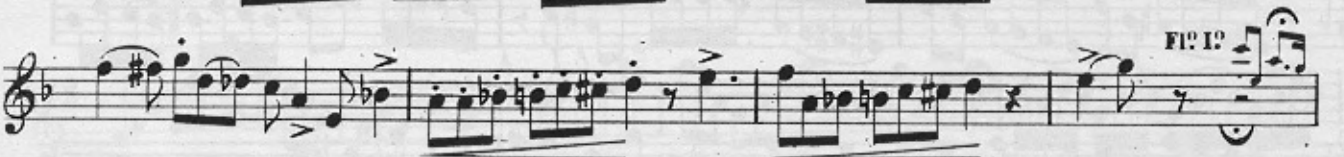
FLAUTO IIº

Allegro.

The first section of the score is marked 'Allegro' and is written in 2/4 time. It consists of ten staves of music. The key signature is one flat (B-flat). The music features a variety of rhythmic patterns, including eighth and sixteenth notes, and rests. The melody is active and rhythmic, typical of Verdi's orchestration.

Andante sostenuto.

The second section of the score is marked 'Andante sostenuto' and is written in 2/4 time. It consists of four staves of music. The key signature remains one flat. The tempo is slower and more sustained than the first section. The music features a mix of quarter and eighth notes, with some triplet markings (indicated by a '3' over a group of notes) in the final staff.



Allegro.



ff



Allegro vivo

FLAUTO II^o

The musical score for Flauto II consists of ten staves of music. The notation includes various rhythmic values, slurs, accents, and dynamic markings such as *q* (pizzicato) and *ff* (fortissimo). The key signature is one flat (B-flat). The score includes two first endings, labeled "FIG. 1^o" and "FIG. 2^o". The first ending is located on the third staff, and the second ending is on the tenth staff. The music features a mix of eighth and sixteenth notes, often beamed together, and includes some triplet markings. The overall style is characteristic of 19th-century flute repertoire.