

# Le doute est l'éternelle question

Bernard Dewagtere, Lades Neffous

Horn (F) 6

*mp*

5

9

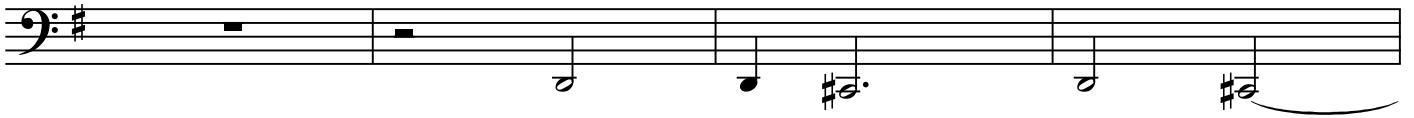
13 7

17

21

25

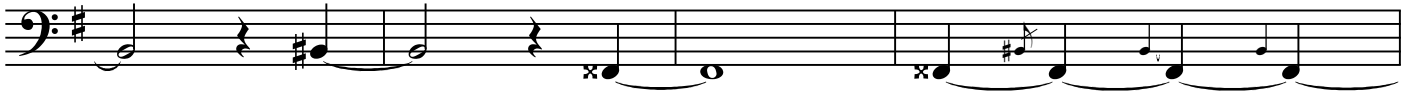
2  
29



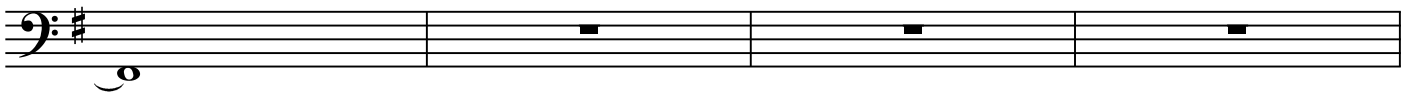
33



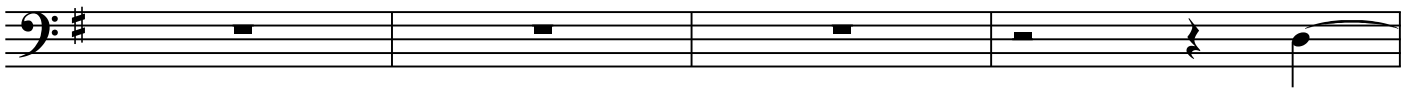
37



41



45

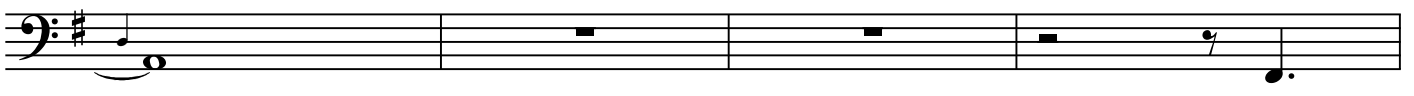


49



53

6



57

Musical staff 57 in bass clef with a key signature of one sharp (F#). The staff contains a sequence of notes: a quarter note G2, followed by a quarter note A2, then a triplet of quarter notes B2, C3, and D3. This is followed by a quarter note E3, a quarter note F#3, and a quarter note G3. The rest of the staff contains whole rests.

61

Musical staff 61 in bass clef with a key signature of one sharp (F#). The staff contains whole rests for the entire duration.

63

Musical staff 63 in bass clef with a key signature of one sharp (F#). The staff begins with a quarter rest. It features two slurs over eighth notes: the first slur covers G#2, A2, and B2; the second slur covers C3, D3, and E3. A flat accidentals (b) are placed above the notes B2 and E3. The staff concludes with a quarter rest.

67

Musical staff 67 in bass clef with a key signature of one sharp (F#). The staff contains whole rests for the first three measures, followed by a quarter note G2 with a slur underneath. The staff ends with a quarter rest.

71

Musical staff 71 in bass clef with a key signature of one sharp (F#). The staff contains a sequence of notes: a quarter note G2, followed by a quarter note A2, then a triplet of quarter notes B2, C3, and D3. This is followed by a quarter note E3, a quarter note F#3, and a quarter note G3. The rest of the staff contains whole rests.

75

Musical staff 75 in bass clef with a key signature of one sharp (F#). The staff contains whole rests for the first four measures. The fifth measure contains a quarter note G2, followed by a slur over eighth notes A2, B2, and C3. The staff concludes with a quarter rest.

79

Musical staff 79 in bass clef with a key signature of one sharp (F#). The staff begins with a half note G2, followed by a quarter note A2, a quarter note B2, and a quarter note C3. A slur covers the last three notes. The staff concludes with a whole rest. A circled number '8' is located above the staff in the final measure.