

Guitarra 2

KV-311 SONATA N°9 2.- ANDANTE

TRANSCRIPCIÓN: LUIS ALVAREZ

MOZART (AMADEUS)
(1756 - 1791)

$\text{♩} = 70$

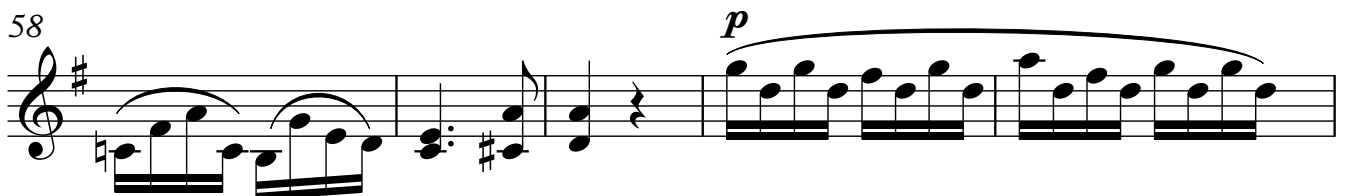
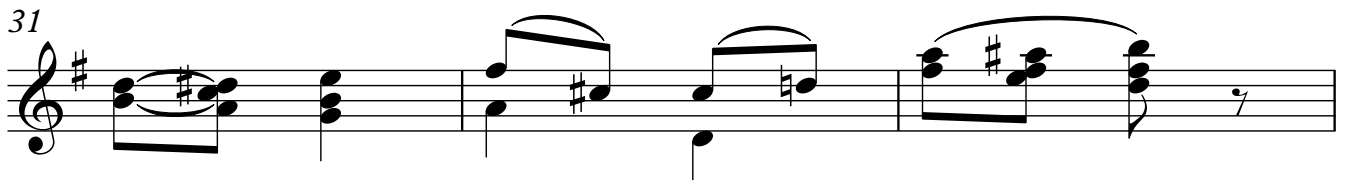
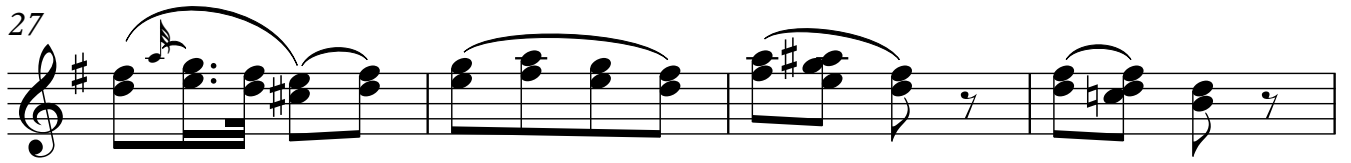
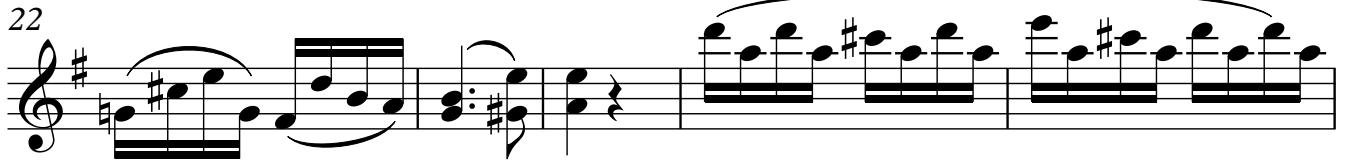
6

10

16

19

The image displays a musical score for guitar, consisting of five staves of music. The key signature is G major (one sharp) and the time signature is 2/4. A tempo marking of quarter note = 70 is indicated at the beginning. The score starts with a repeat sign. The first staff contains measures 1-5. The second staff, starting at measure 6, includes a fermata over the first measure and a repeat sign at the end. The third staff, starting at measure 10, features a repeat sign in the middle. The fourth staff, starting at measure 16, contains four measures of music. The fifth staff, starting at measure 19, contains four measures of music. The notation includes various note values, rests, and articulation marks such as slurs and fermatas.



63 *mf*

67

70

76 *p*

82

86

90