

Sonate

N° 2 - K 280

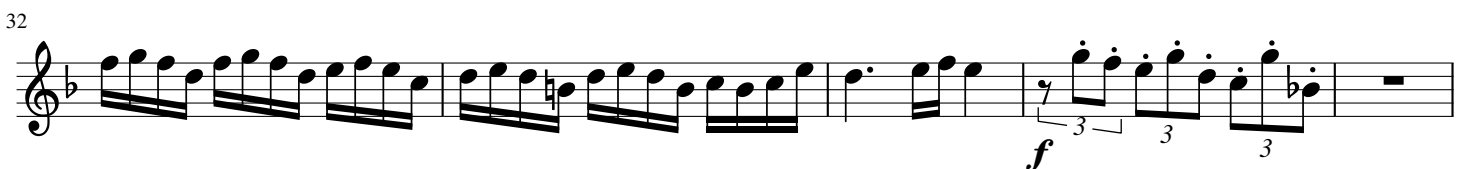
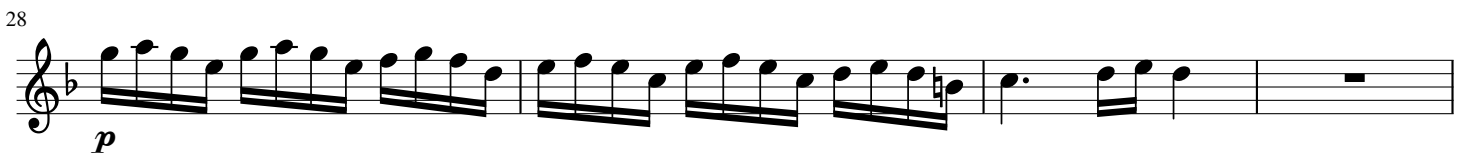
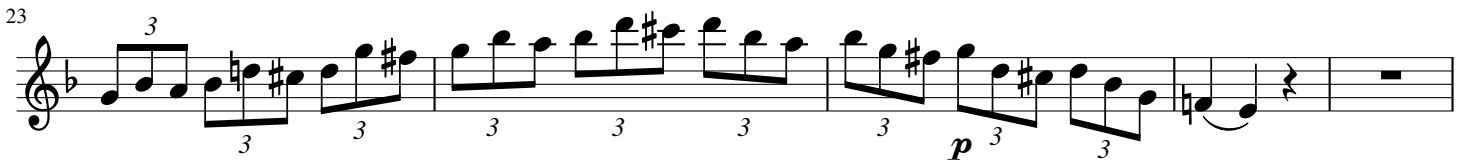
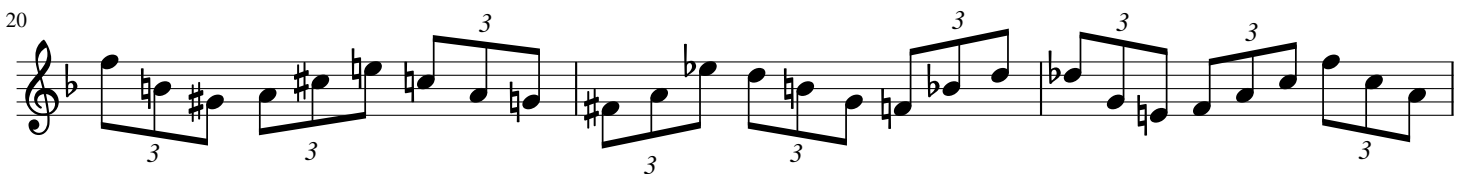
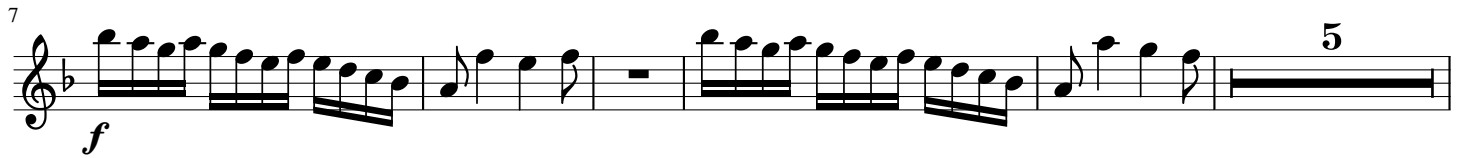
FLUTE

W. A. MOZART

Transcription

Pierre Montreuille

Allegro assai (♩ = 130)



37

3

42

tr

46

p

3

53

f

tr

p

59

p

68

f

2

6

80

p

f

p

88

f

f

94

5

3

3

3

3

3

3

102

105

110

115

122

127

131

Adagio (♩ = 52)

139

146

154

p *f* *p* *f*

160

f *f* *p*

166

f *f* *p*

171

f *p*

177

f *p* *f* *p* *f* *p*

184

f *p* *f* *p* *f* *p*

191

f *p* *f* *p*

196

f *f*

Presto (♩ = 80)

201

f *p* *f*

209

f *p*

224

p

236

p *fp* *fp*

248

fp *fp* *p*

258

fp *fp* *f* *p*

270

f *p*

281

f

299

p *f*

306

f *p* *f* *p* *f*

315

f

325

p *f*

341

p

351

p *fp* *fp*

359

fp *fp* *p*

368

fp *fp* *fp* *fp* *f*

375

p *f*

387