

# Symphony nr. 18 in F major K. 130

WOLFGANG AMADEUS MOZART (1756-1791)

ALLEGRO.

Flauto II

5 *f*

10 *p*

19 *f*

28 5 4 *p* *f*

45 6 *p* *f*

59 8 *f*

76

81 *f* 4 *f*

Detailed description: This image shows the musical score for the Flauto II part of the first movement of Mozart's Symphony No. 18. The score is written in treble clef with a key signature of one flat (B-flat) and a common time signature (C). It consists of eight staves of music, each starting with a measure number. The first staff begins at measure 5 with a forte (*f*) dynamic and a five-measure rest. The second staff starts at measure 10 with a piano (*p*) dynamic. The third staff starts at measure 19 with a forte (*f*) dynamic. The fourth staff starts at measure 28 with a piano (*p*) dynamic, followed by a four-measure rest, and then a forte (*f*) dynamic. The fifth staff starts at measure 45 with a piano (*p*) dynamic, followed by a six-measure rest, and then a forte (*f*) dynamic. The sixth staff starts at measure 59 with a forte (*f*) dynamic and an eight-measure rest. The seventh staff starts at measure 76. The eighth staff starts at measure 81 with a forte (*f*) dynamic and a four-measure rest, followed by a forte (*f*) dynamic. The score includes various musical notations such as rests, notes, slurs, and dynamic markings.

92

99

5 4

*p* *f*

117

6

*f*

135

ANDANTINO CANTABILE.

10

Flauto II

*f*

19

4

33

*p* *tr*

44

*p* *f* *tr*

56

10

*f*

3

75 4

88 13

111

MENUETTO.

Flauto II 4

Trio.

11 6

26 4

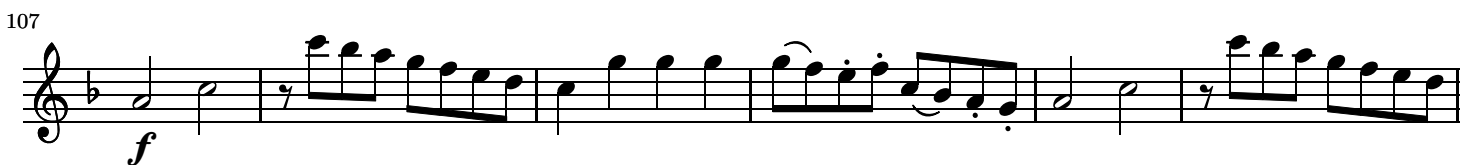
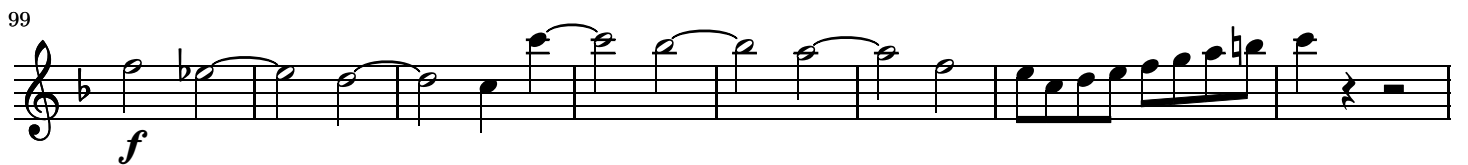
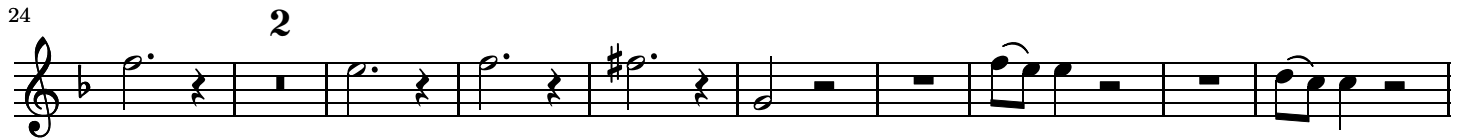
Men.D.C.

ALLEGRO MOLTO.

Flauto II f

7

14 2



113

119

126

3 2

138

2

*f*

148

156

8

*p*

169

*f* *pp* *f*

175

184

8

*f*