

Fugues

1^{er} RECUEIL

Fugues à 4 voix N° 1 à 6

Flûte à bec soprano

Johann PACHELBEL

Transcription & Annotations

Pierre Montreuille

The image displays six staves of musical notation for a soprano flute. Each staff begins with a red number (1-6) and a measure rest marked with an '8'. The music is in G minor (one flat) and common time. The notation includes various rhythmic values, slurs, and ornaments (trills). Staff 1 starts with a quarter note G4, followed by eighth notes. Staff 2 begins with a quarter note G4. Staff 3 starts with a quarter note G4. Staff 4 begins with a quarter note G4. Staff 5 starts with a quarter note G4. Staff 6 begins with a quarter note G4. The score concludes with a double bar line.

17 ⁸ *tr*

24 ⁸

30 ⁸ *tr*

4 ⁸ 5 *tr*

10 ⁸

14 ⁸ 5

24 ⁸ *tr*

5 ⁸ 5

9 ⁸ 3

18 ⁸

23 ⁸

27 ⁸ *tr*

30 ⁸ 5

40 ⁸

43 ⁸

48 ⁸ *tr*

6 ⁸ 5

11 ⁸ 9

23 ⁸ *tr*

30 ⁸

34 ⁸

39 ⁸ *tr*

Detailed description: This is a page of musical notation for Soprano, featuring 15 staves of music. The key signature is one flat (B-flat major or D minor). The time signature is 8/8. The music consists of various rhythmic patterns, including eighth and sixteenth notes, often beamed together. There are several trills (tr) and a fermata (5) over a whole note. The staves are numbered 27, 30, 40, 43, 48, 6, 11, 23, 30, 34, 39, and 151. The notation includes slurs, ties, and dynamic markings.

Fugues

1^{er} RECUEIL

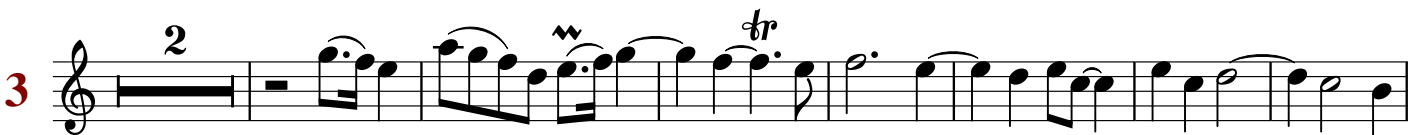
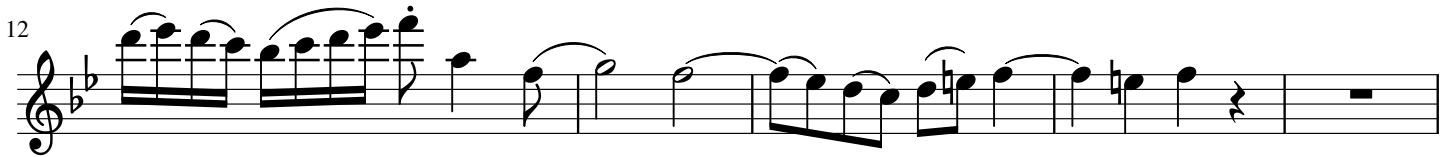
Fugues à 4 voix N° 1 à 6

Flûte à bec alto

Johann PACHELBEL

Transcription & Annotations

Pierre Montreuille



19

3

28

4

3

7

13

18

23

26

5

2

6

13

18

21

24

27

33

36

42

45

48

6

5

Detailed description: This image shows a page of musical notation for an Alto instrument. The score is written in a single system with ten staves. The first nine staves are numbered 18, 21, 24, 27, 33, 36, 42, 45, and 48. The tenth staff is numbered 6 in red. The eleventh staff is numbered 5. The music is in a key signature of one flat (B-flat major or D minor) and a common time signature. The notation includes various rhythmic values, slurs, and articulation marks such as accents and trills. The piece concludes with a double bar line at the end of the tenth staff.

12



17



22



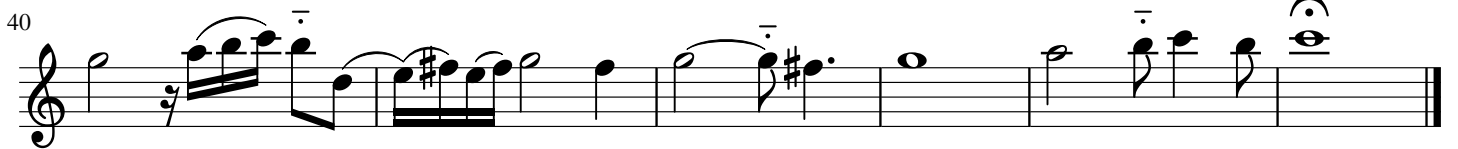
28



35



40



Fugues

1^{er} RECUEIL

Fugues à 4 voix N° 1 à 6

Flûte à bec Ténor

Johann PACHELBEL

Transcription & Annotations

Pierre Montreuille

1

3

9

6

18

2

4

10

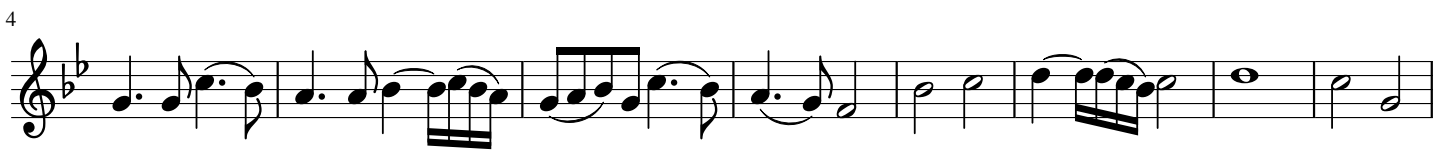
3

7

15

21

27



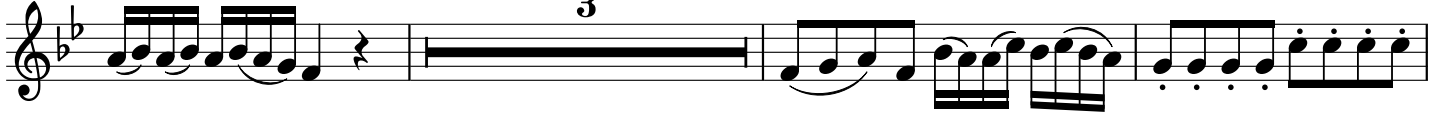
30



34



40



46



6



7



13



18



25



32



40



Fugues

1^{er} RECUEIL

Fugues à 4 voix N° 1 à 6

Flûte à bec basse

Johann PACHELBEL

Transcription & Annotations

Pierre Montreuille

The image displays three fugue entries for Bass Flute, numbered 1, 2, and 3. Each entry begins with a red number and a measure rest. Entry 1 starts with a 4-measure rest, followed by a melodic line with eighth notes and a trill. Entry 2 starts with a 3-measure rest, followed by a melodic line with eighth notes and a trill. Entry 3 starts with a 3-measure rest, followed by a melodic line with eighth notes and a trill. The score is written in bass clef with a key signature of one flat (B-flat) and a common time signature (C). Measure numbers 8, 9, 16, 7, 10, 9, and 18 are indicated at the start of their respective lines.

48



10



15



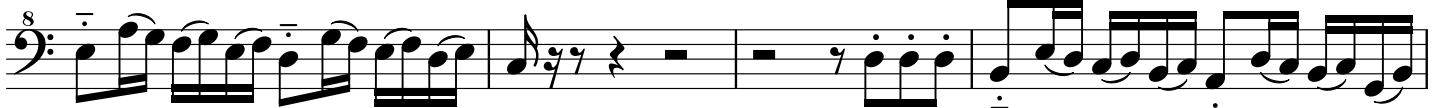
27



33



39



43

