

ALTO

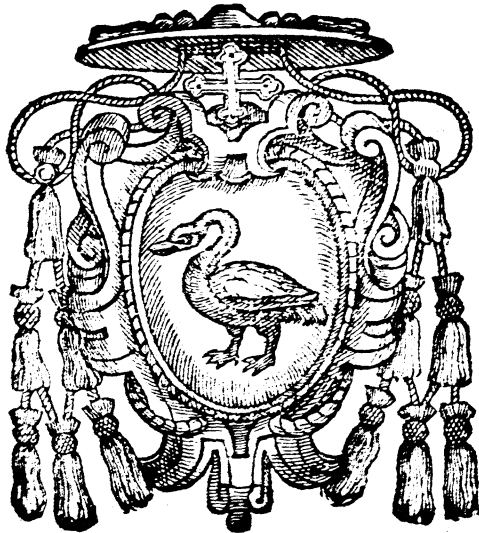
RECERCATE, ET CANZONE
PER SONARE, ET CANTARE

DE

PAOLO QVAGLIATI

ORGANISTA DE SANTA
MARIA MAGGIORE
DI ROMA.

Libro Primo à quattro voci.



IN ROMA,
Per li Heredi di Nicolò Mutij MDCI.
Con licenza de' Superiori.

N

MO MO
ALL'ILLVSTRISS. ET REVER. SIGNOR
CARDINAL PARAVICINO



V. S. Illustrissima, à cui tanto debbo, quanto parmi impossibile sodisfare; & in cui insieme con l'altrezza del grado fanno tutte le virtùncbili, & reali quasi un concento di soauissima armonia; Vengo io con tutta quella humiltà, che mi si conuiene, à presentare queste mie poche Canzonette; & Ricercate; lequali, come sono solamente di note musicali, & senza parole composte, così accennano in se stesse l'obligatione, ch'io porto a V. S. Illustrissima esser tale, che non si può sprimere con parole. Degnisi di gradirle in testimonio del mio poco valore, & del molto volere; & di riceuere insieme con la picciolezza del dono il grande affetto del donatore. Fmirtando in questo non pur quel gran Rè de' Persiani, ilquale non rifiutò l'acqua pura del fiume dentro le rustiche mani offertagli dal semplice villanello; ma lo stesso Re del Cielo, & della terra, a cui non furono men cari i rozzi doni de' poveri Pastori, che i ricchi tributi de' Re Magi venuti insin dall'ultime contrade dell'Oriente. Con che à V. S. Illustrissima fò riuerenza, & le priego dal Cielo ogni grandezza. Di Roma il dì 3. di Luglio 1601.

Di V. S. Illustrissima, & Reuerendiss.

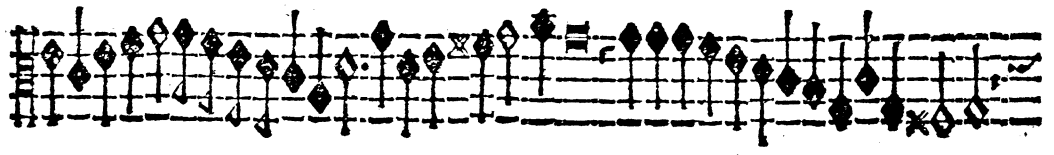
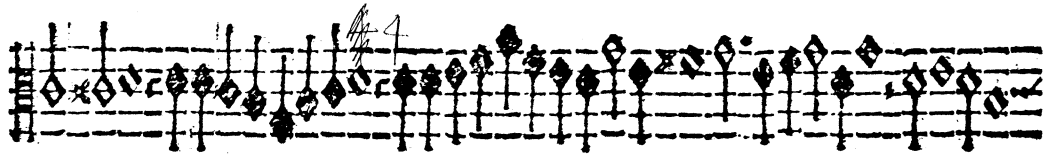
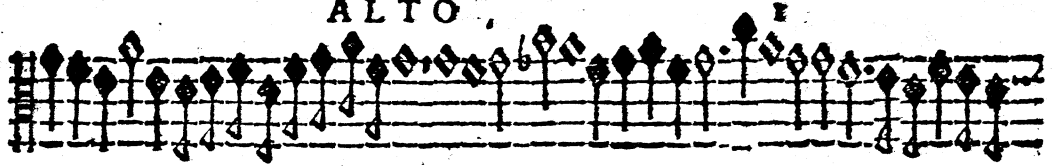
Diuotissimo Seruitore

Paolo Quagliati.

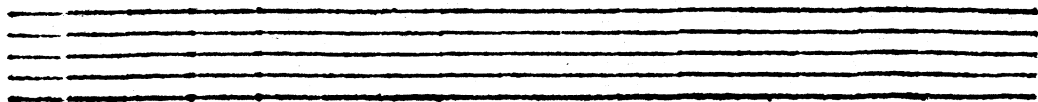
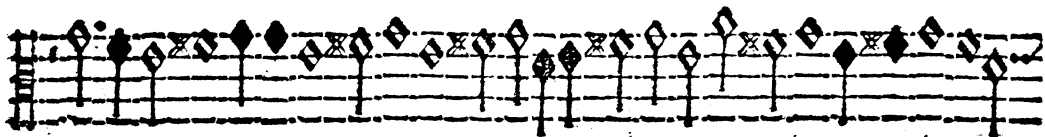
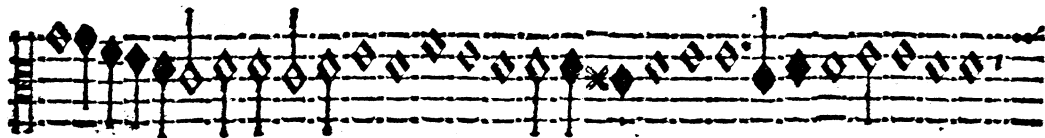
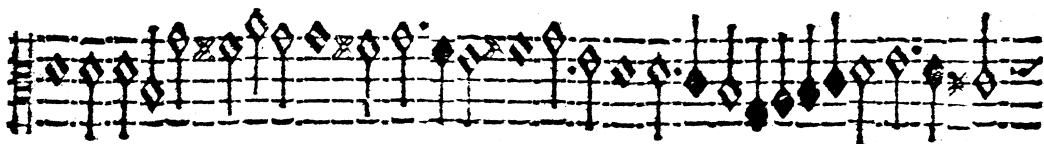
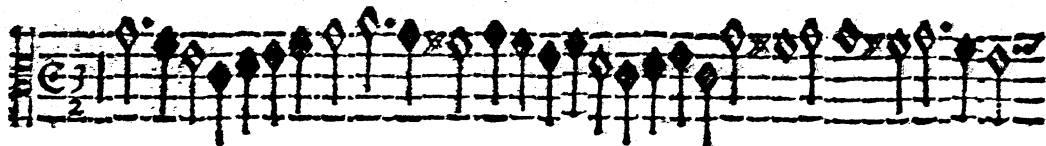
I

ALTO

ALTO

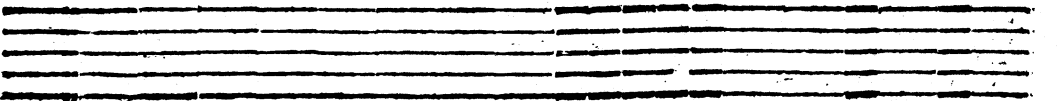
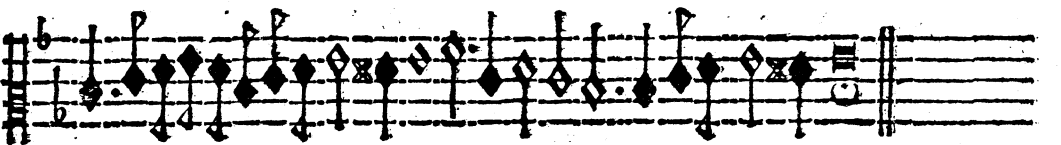
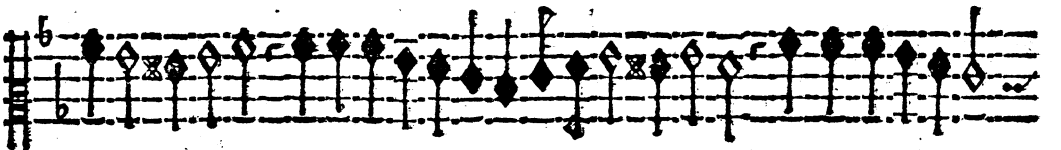


ALTO



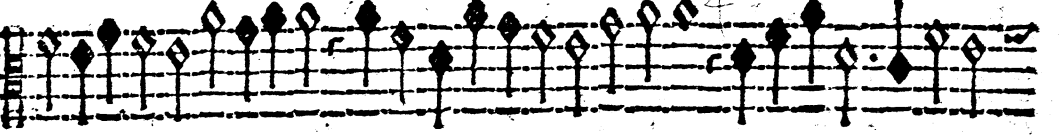
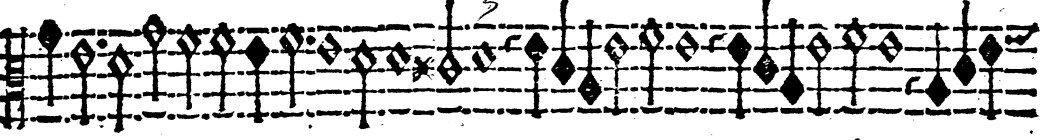
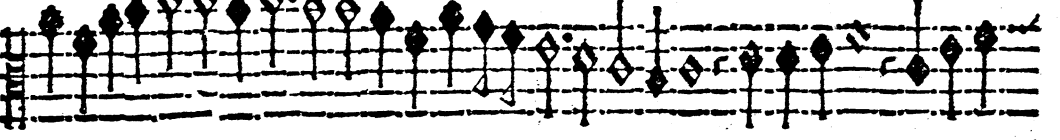
ALTO

3



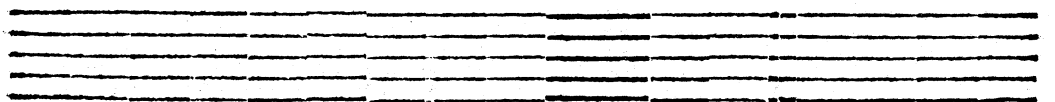
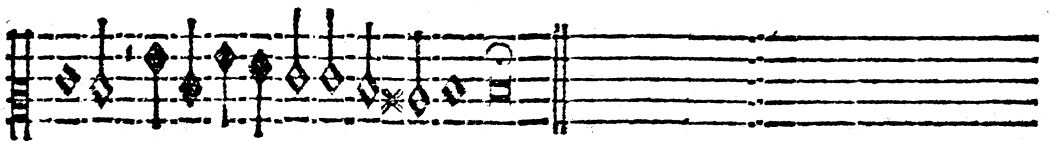
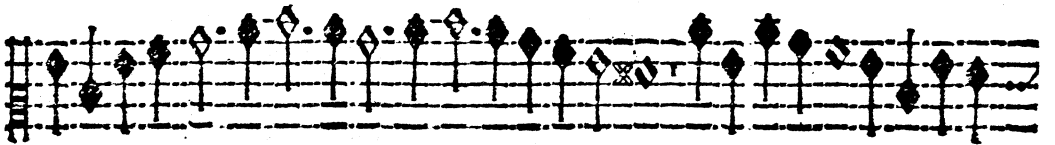
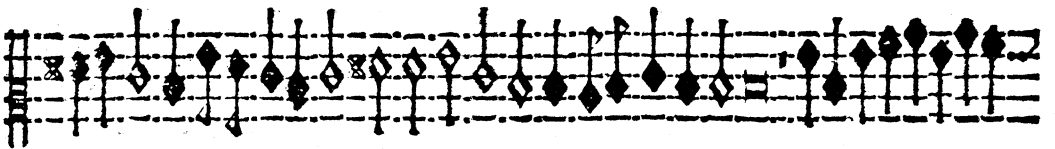
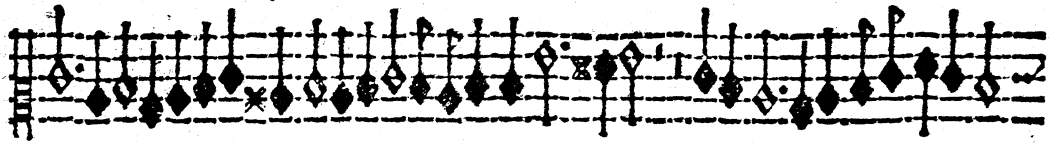
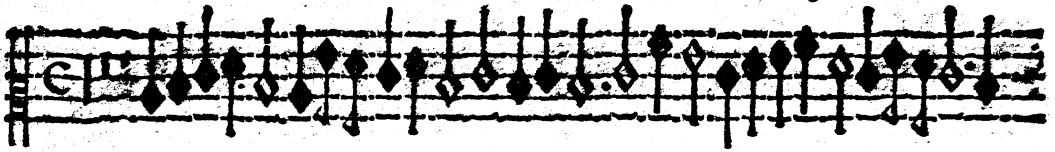
47

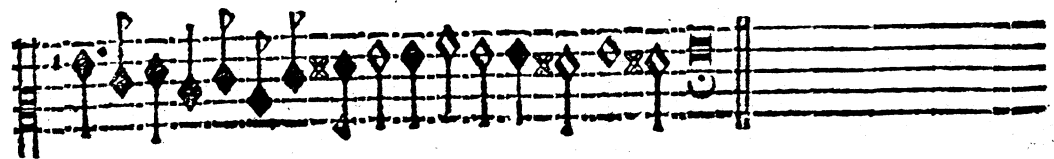
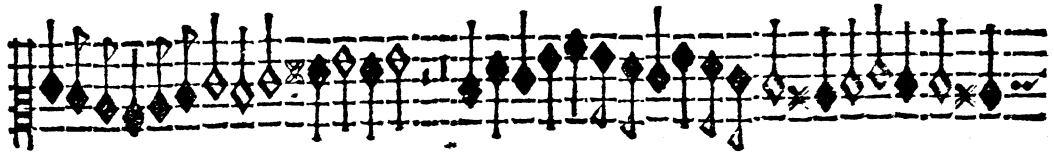
AETO



ALTO

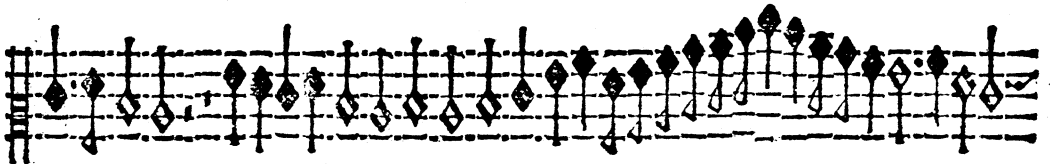
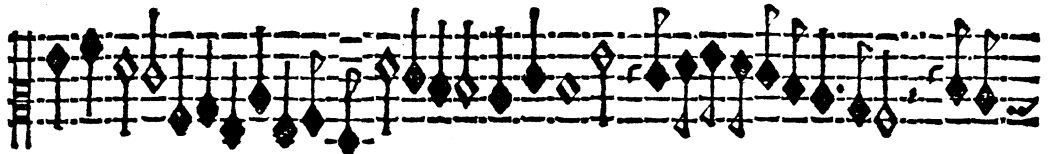
9



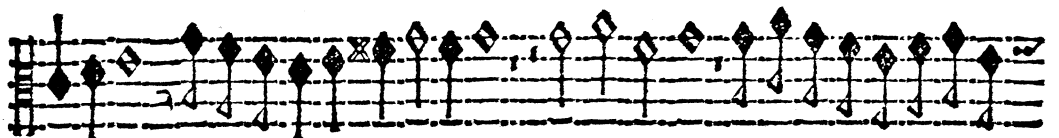
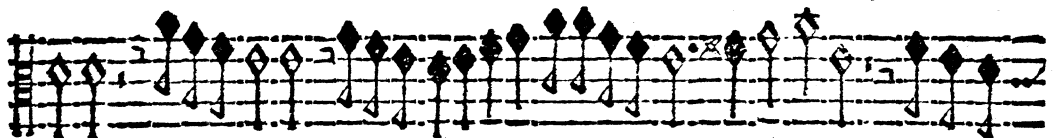
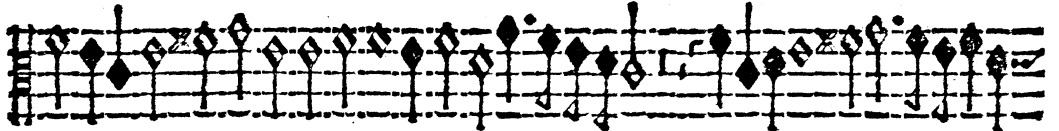
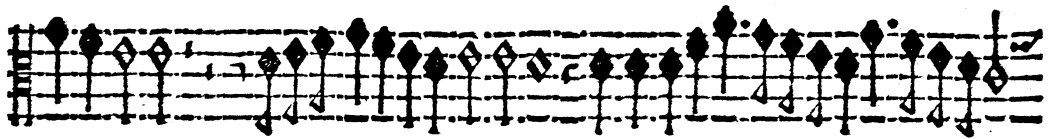
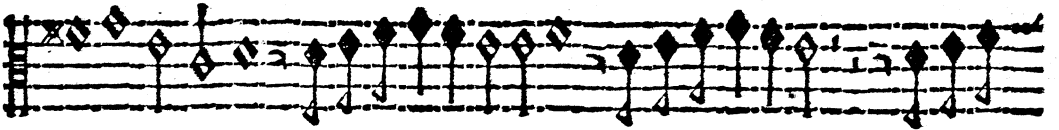


ALTO

7

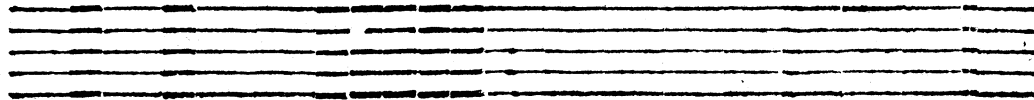
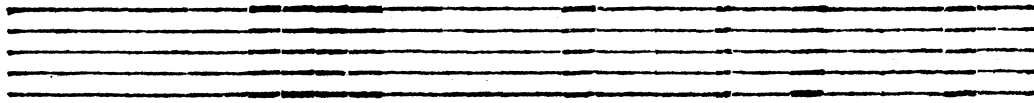
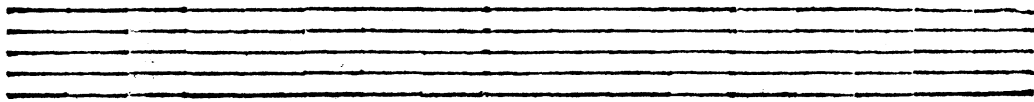
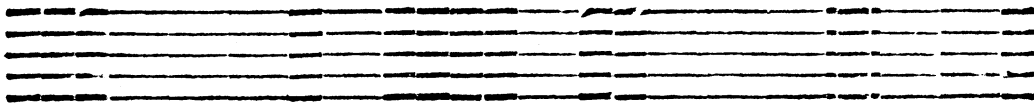
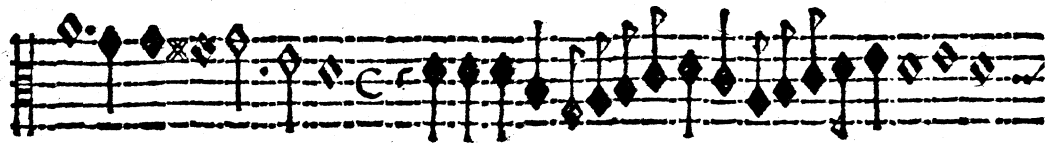
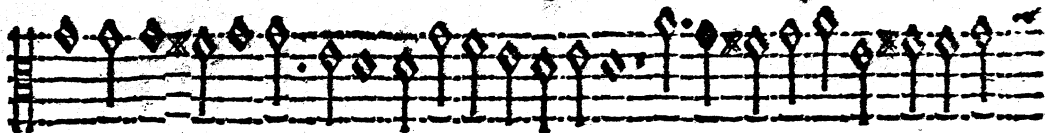


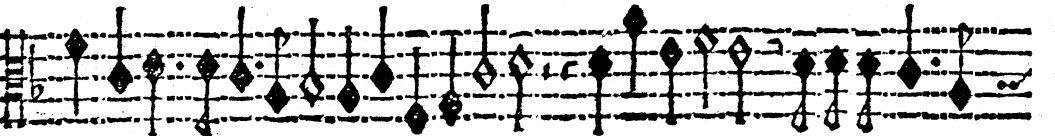
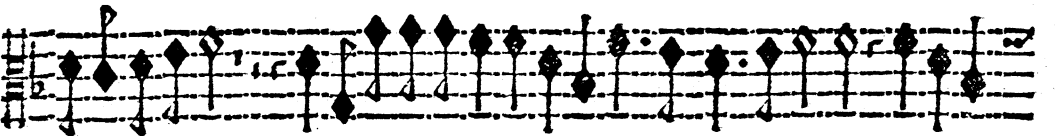
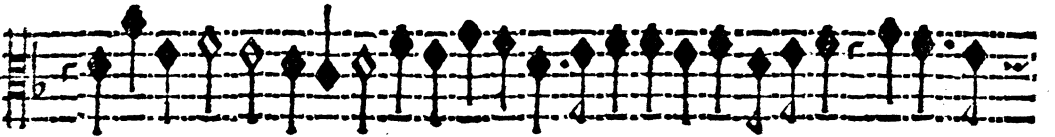
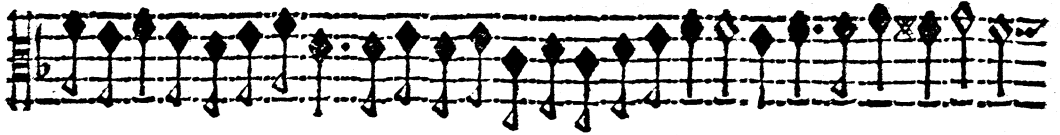
ALTO



ALTO

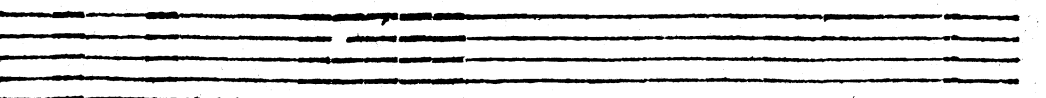
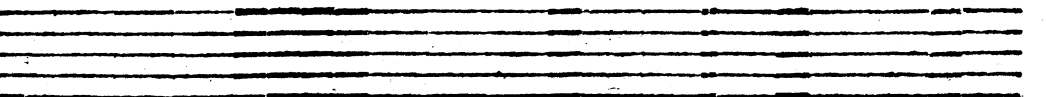
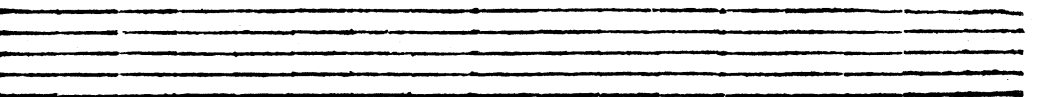
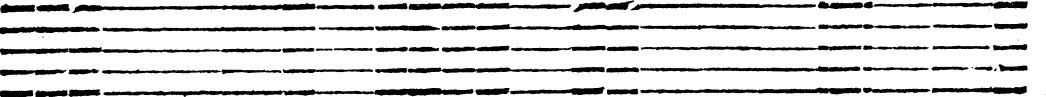
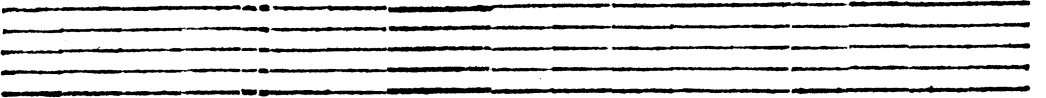
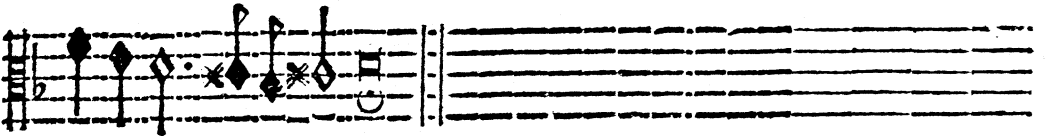
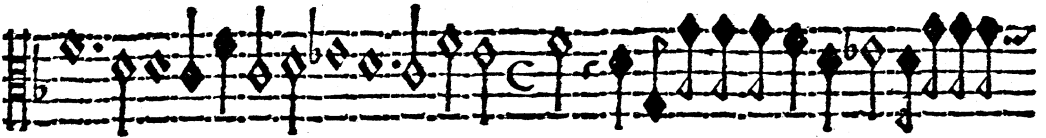
8

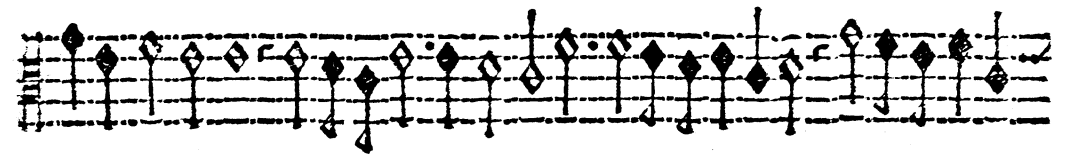
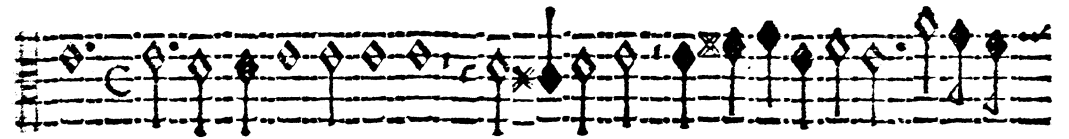
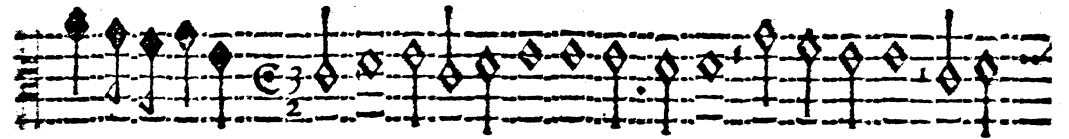




ALTO

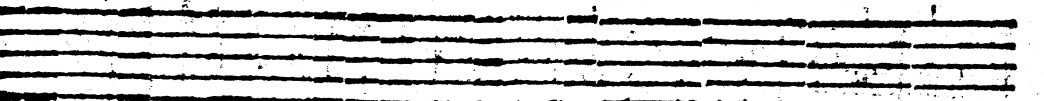
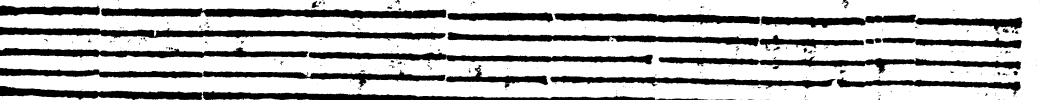
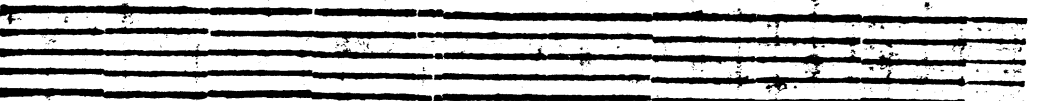
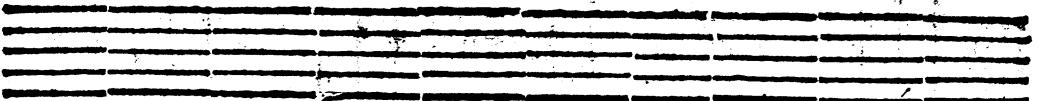
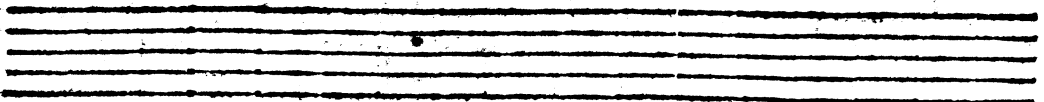
9





ALTO

197

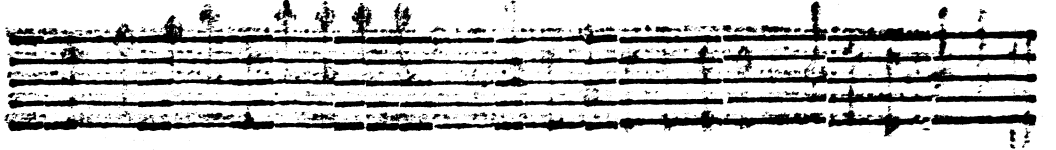
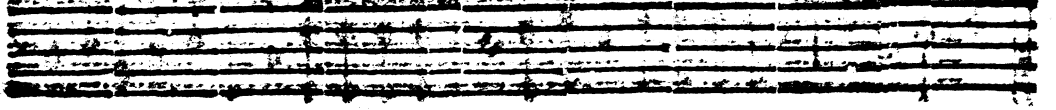
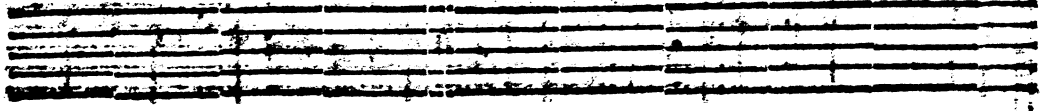
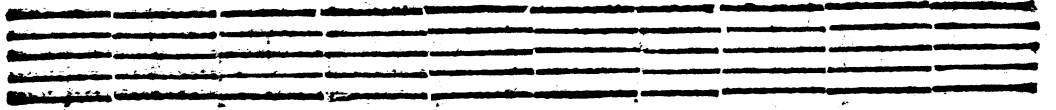
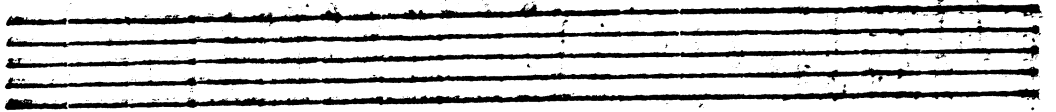
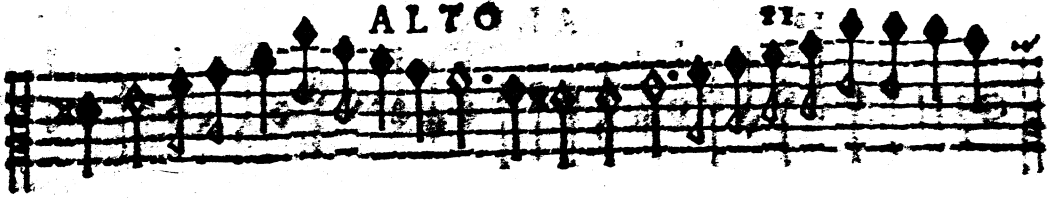


ALTO

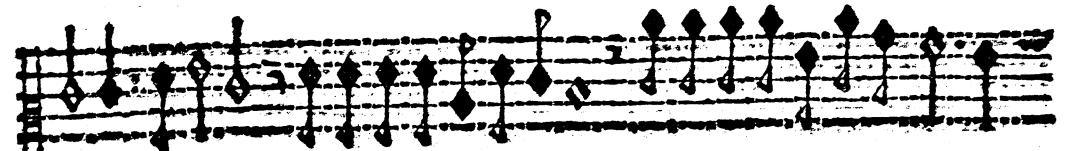
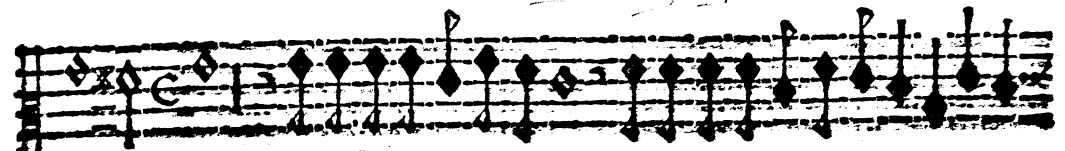
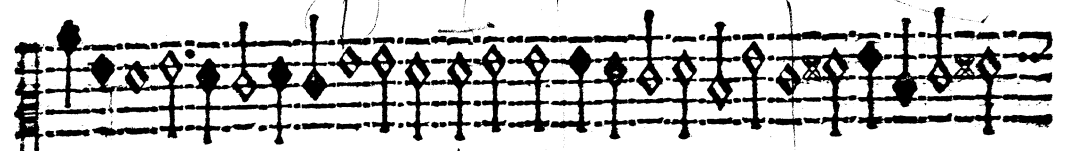
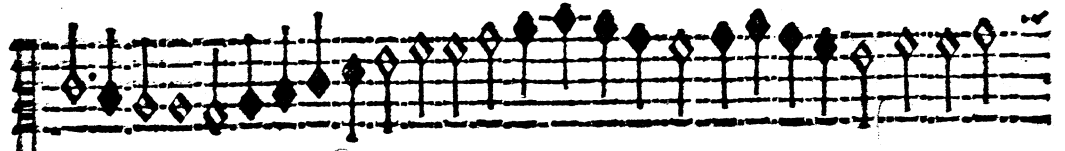
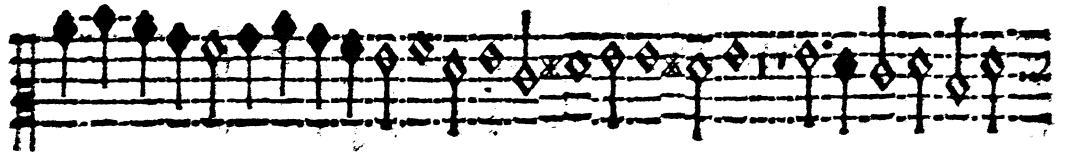


ALTO

21

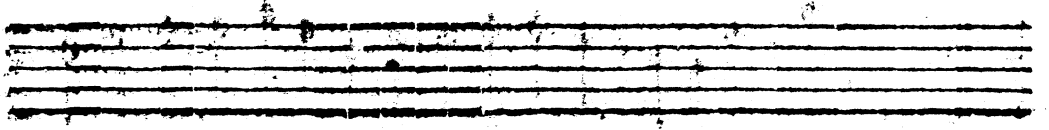
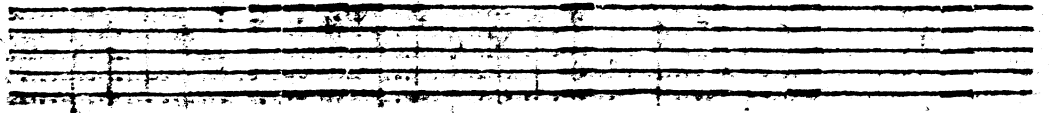
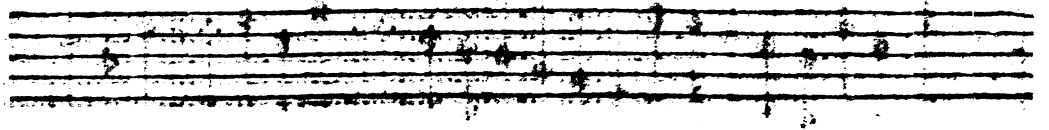
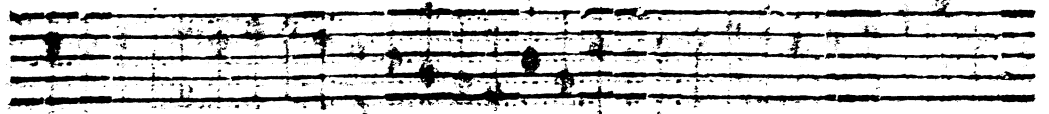
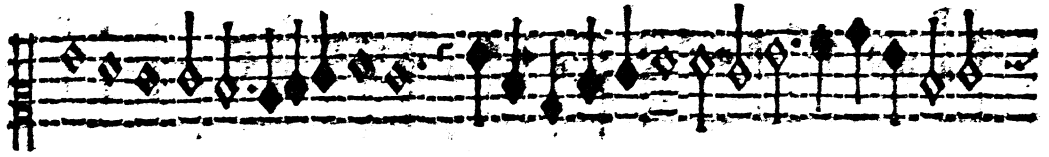
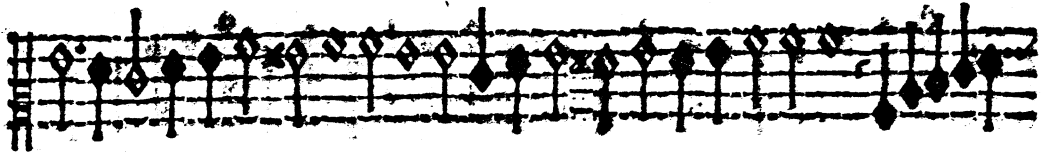
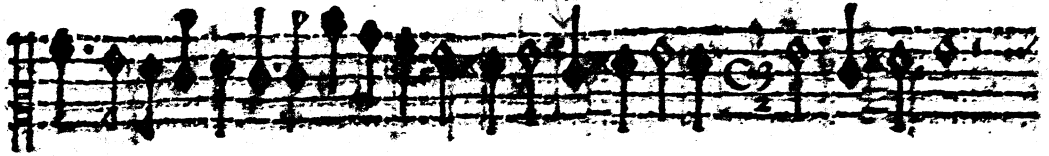


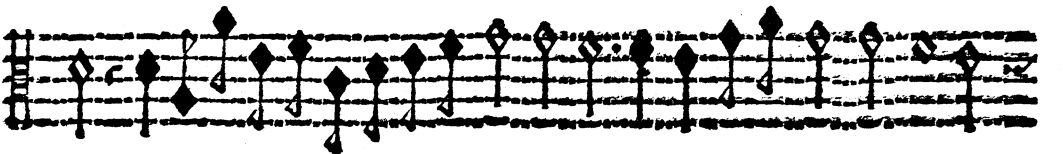
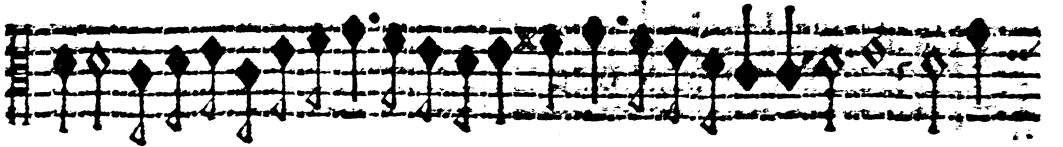
ALTO



ALTO A

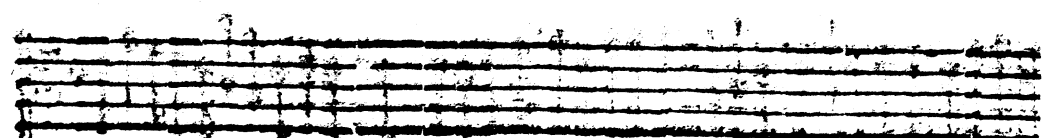
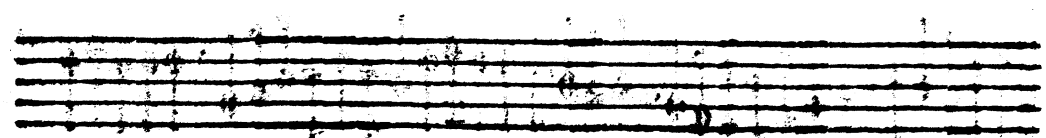
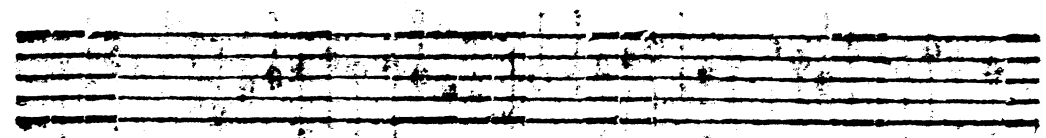
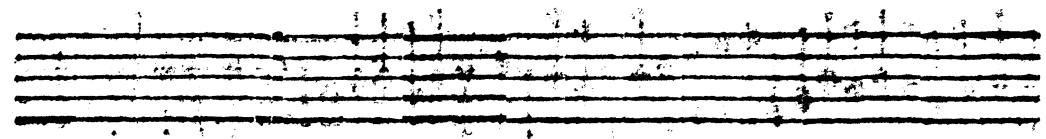
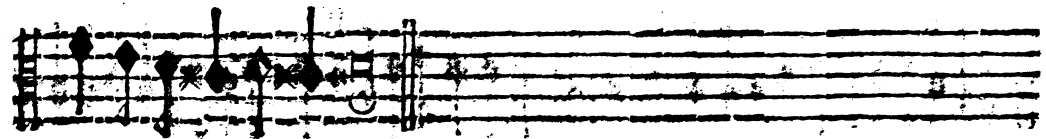
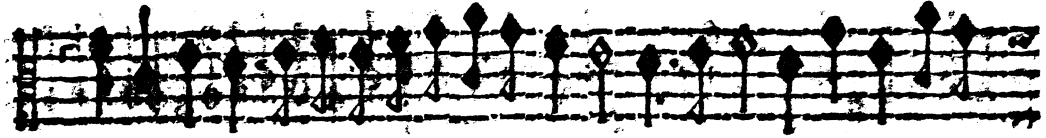
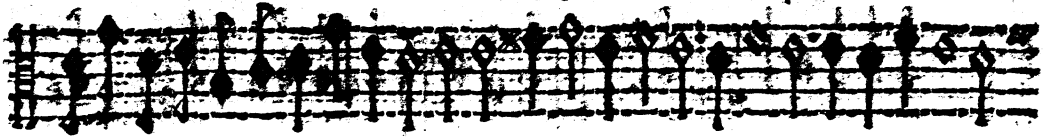
1257





ALFA

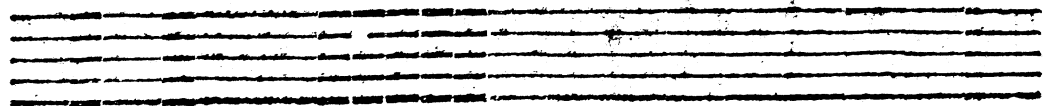
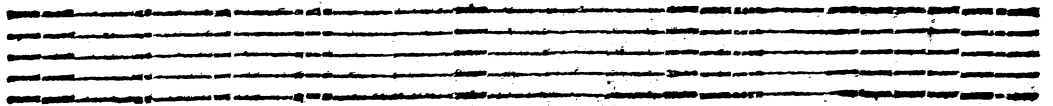
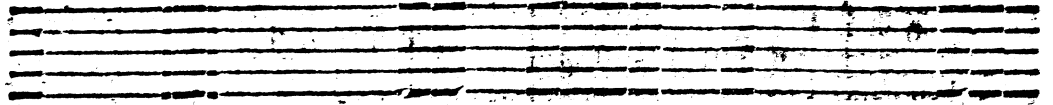
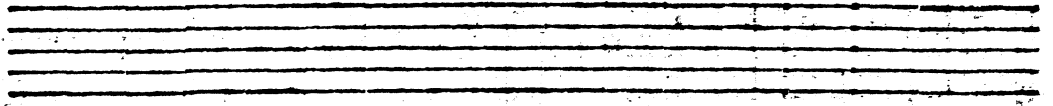
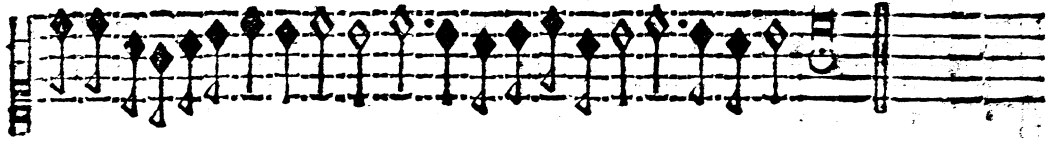
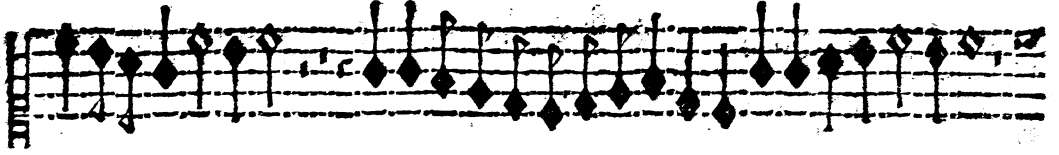
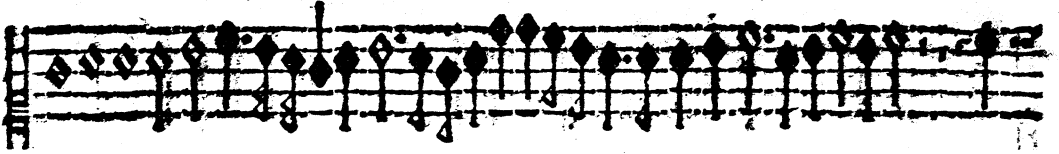
12



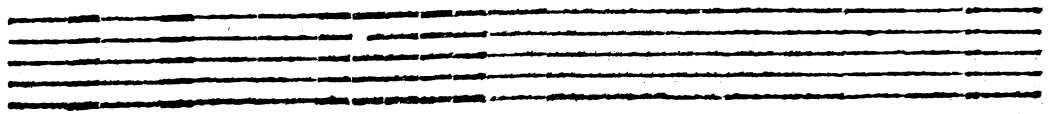
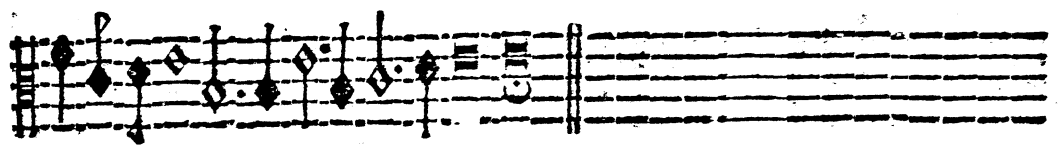
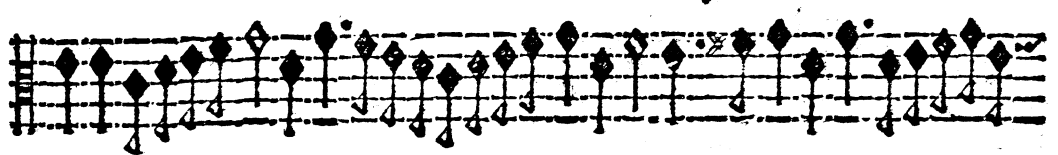
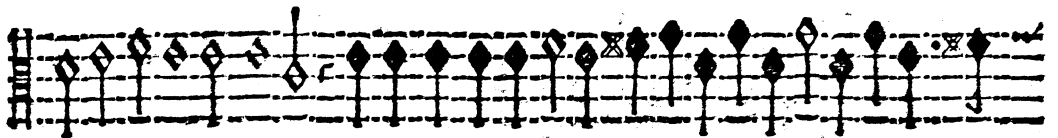
This image shows a page of musical notation for an Alto part, consisting of eight staves of music. The notation is written in a style typical of early 20th-century sheet music, featuring a treble clef and a common time signature (C). The music is characterized by a series of rhythmic patterns, including eighth and sixteenth notes, often grouped together. The notation is dense and appears to be a single melodic line. The page is numbered '14' in the top left corner and 'ALTO' in the top center. The music is arranged in eight horizontal staves, each containing a sequence of notes and rests. The overall appearance is that of a page from a musical score, possibly for a vocal or instrumental part.

Recercate, & Canzone di Paolo Quagliati. lib. 1. à 4.

Q

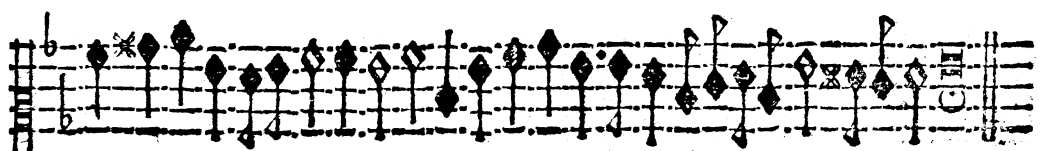
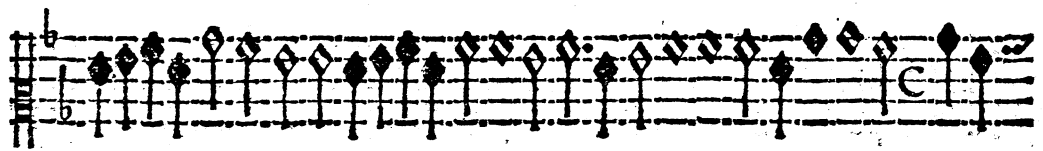
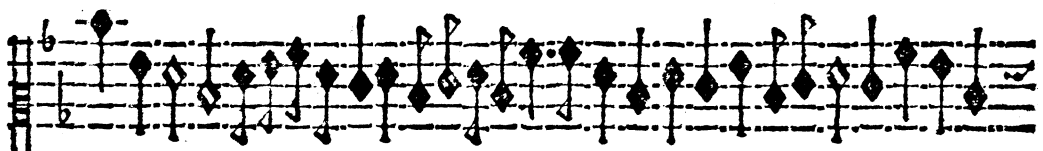
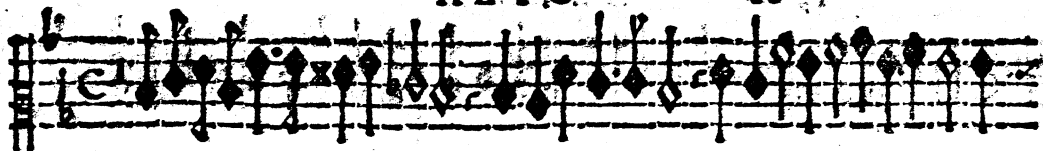


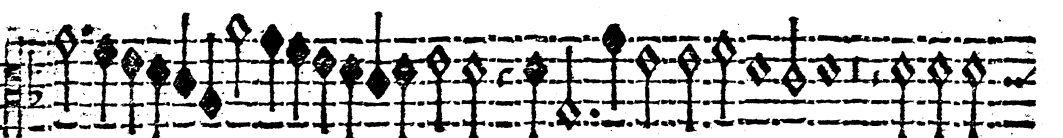
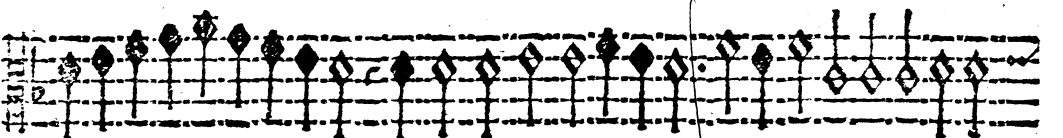
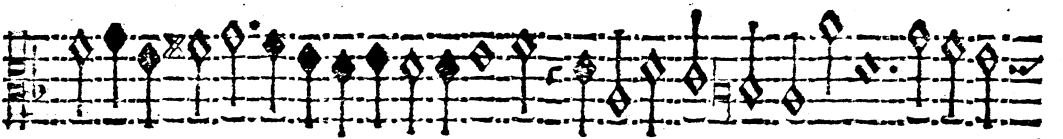
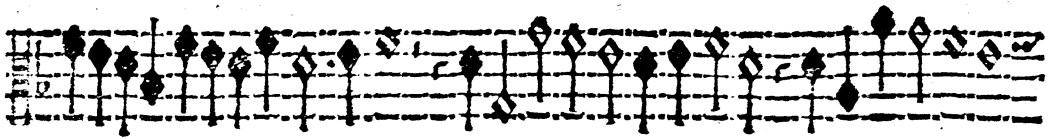
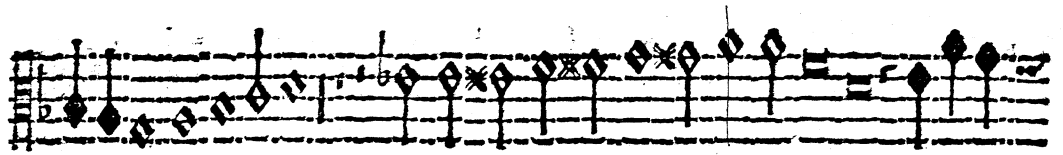
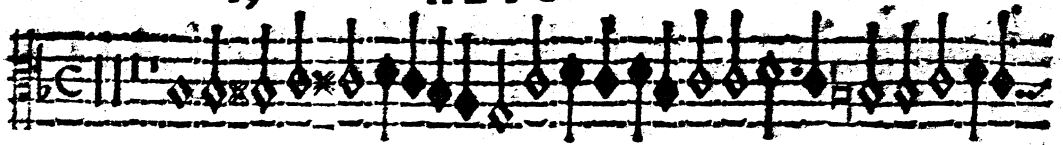
The image displays a musical score for the Alto A part, spanning eight staves. The notation is written on a five-line staff with a treble clef. The music features a variety of note values, including quarter, eighth, and sixteenth notes, as well as rests. Dynamic markings such as 'p' (piano) and 'f' (forte) are present throughout the score. The piece concludes with a double bar line and a fermata symbol.



ALTO

18





ALTO

19

