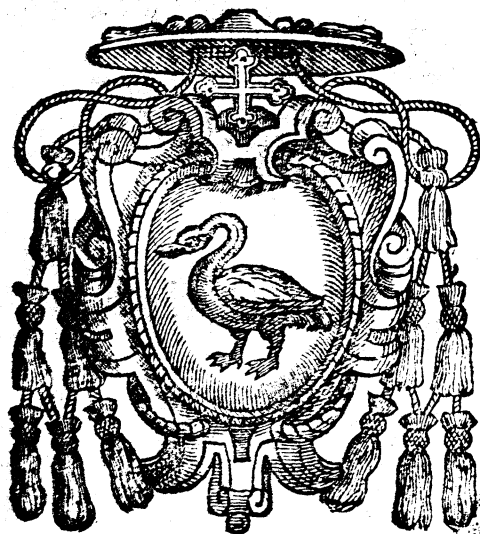


BASSO

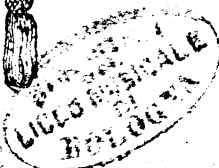
RECERCATE, ET CANZONE
PER SONARE, ET CANTARE
D E

PAOLO QVAGLIATI
ORGANISTA DE SANTA
MARIA MAGGIORE
DI ROMA.

Libro Primo à quattro voci.



IN ROMA,
Per li Heredi di Nicolò Mutij MDCI.
Con licenza de' Superiori.



E

MO MO
ALL'ILLVSTRISS. ET REVER. SIGNOR
CARDINAL PARAVICINO



V. S. Illustrissima, à cui tanto debbo, quanto permi impossibile sodisfare; & in cui insieme con l'altrezza del grado fanno tutte le virtù nobili, & reali quasi un concerto di soauissima armonia; Vengo io con tutta quella humiltà, che mi si conuiene, à presentare queste mie poche Canzonette, & Ricercate; lequali, come sono solamente di note musicali, & senza parole composte, così accennano in se stesse l'obligatione, ch'io por-

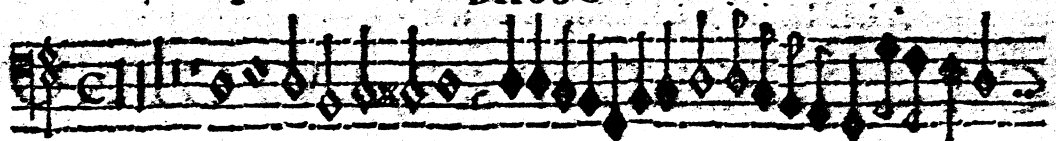
so a V. S. Illustrissima offer tale, che non si può sprimere con parole. Degnisi di gradirle in testimonio del mio poco valore, & del molto volere; & di ricevere insieme con la picciolezza del dono il grande affetto del donatore. Fmizando in questo non pur quel gran Rè de' Persiani, ilquale non rifiutò l'acqua pura del fiume dentro le rustiche mani offertagli dal semplice villanello; ma lo stesso Re del Cielo, & della terra, a cui non furono men cari i rozzi doni de' poueri Pastori, che i ricchi tributi de' Re Magi venuti infm dall'ultime contrade dell'Oriente. Con che à V. S. Illustrissima fo riuerenza, & le priego dal Cielo ogni grandezza. Di Roma il dì 3. di Luglio 1601.

Di V. S. Illustrissima, & Reuerendiss.

Diuotissimo Seruitore

Paolo Quagliati.

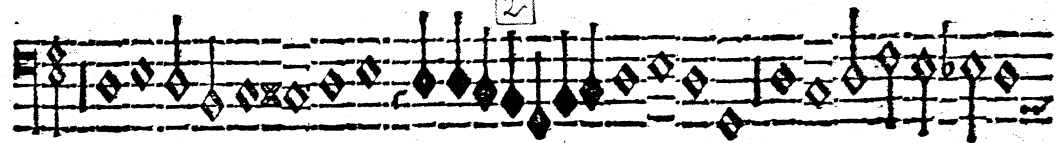
BASSO



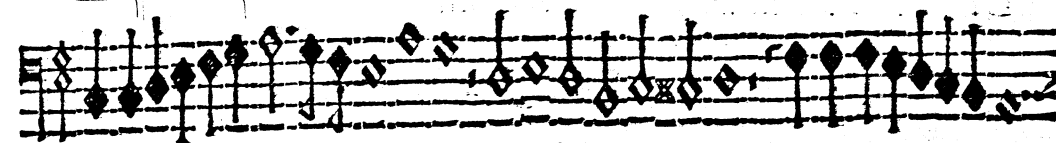
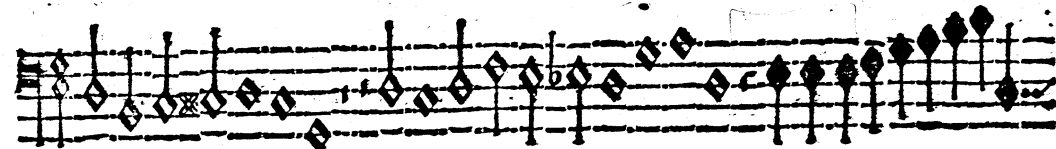
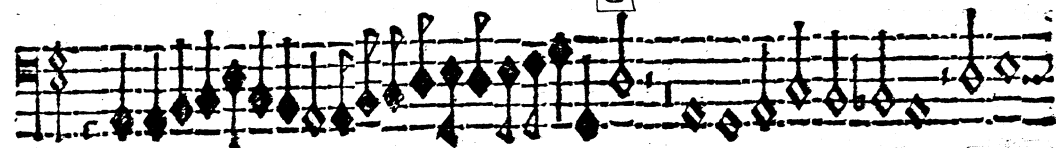
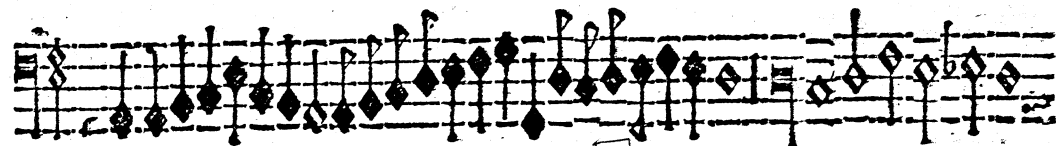
1



2



3

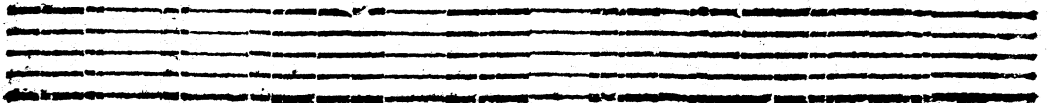
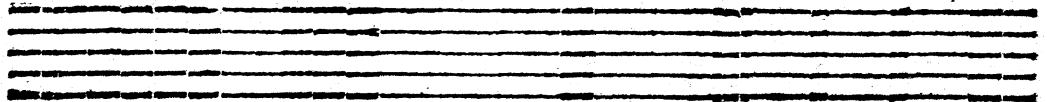
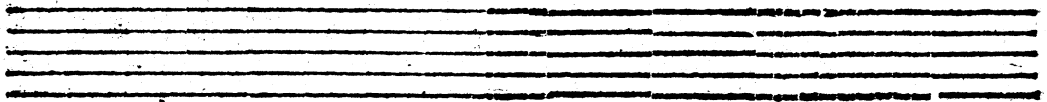
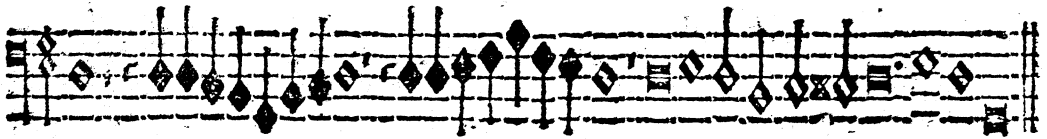
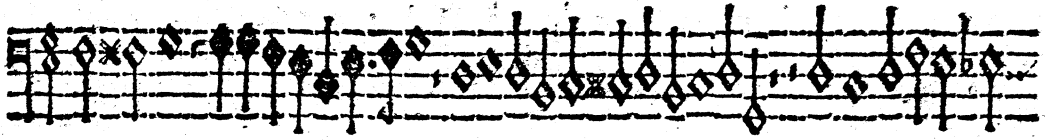
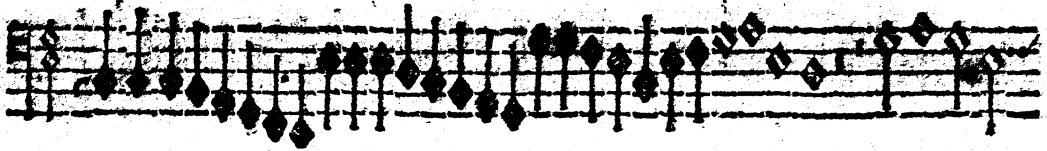


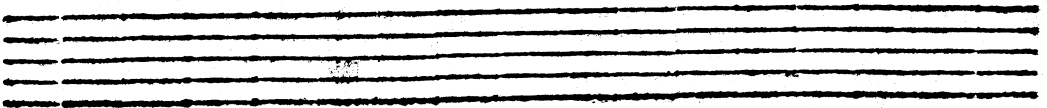
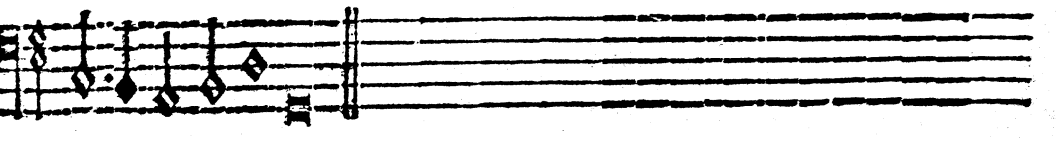
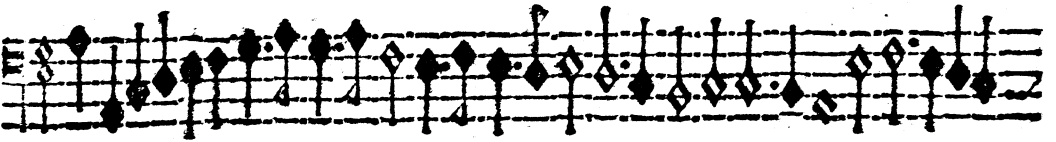
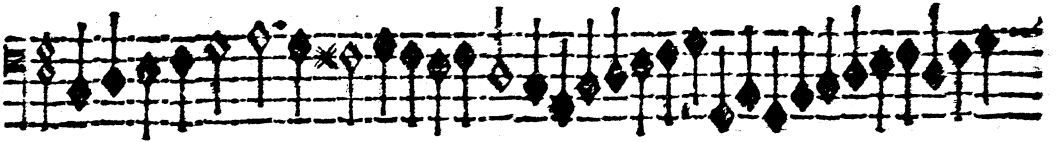
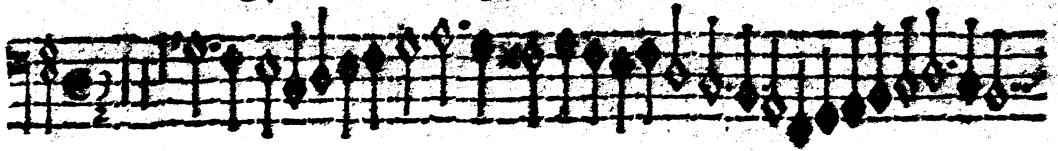
4



BASSO

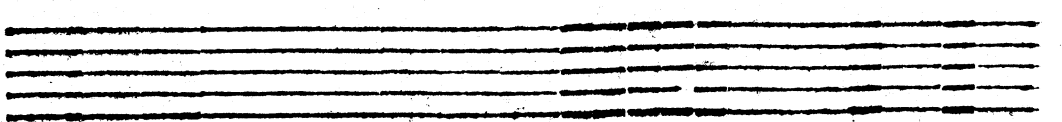
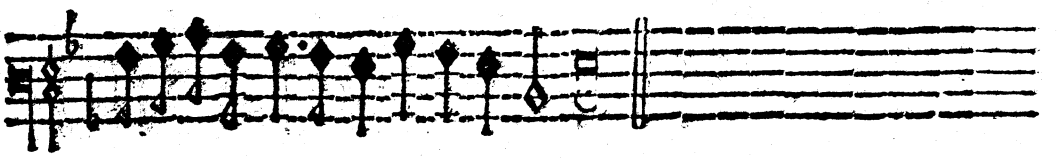
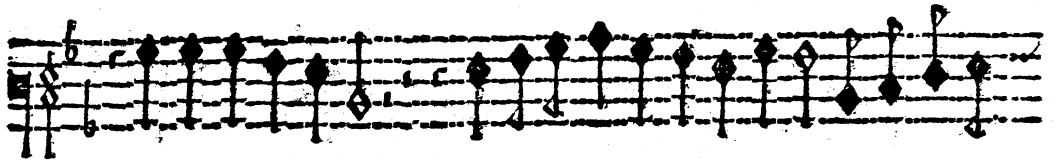
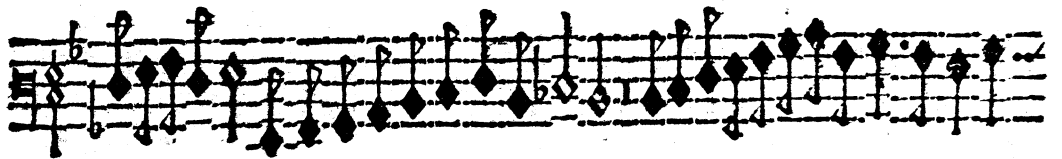
I.





BASSO

3



BASSO

First staff of musical notation, featuring a treble clef, a common time signature (C), and a key signature of one flat (B-flat). The staff contains a series of notes and rests, with a handwritten '1' above the first measure.

Second staff of musical notation, continuing the piece with a treble clef and common time signature. It features a series of notes and rests, with a handwritten '1' above the final measure.

Third staff of musical notation, continuing the piece with a treble clef and common time signature. It features a series of notes and rests, with a handwritten '2' above the final measure.

Fourth staff of musical notation, continuing the piece with a treble clef and common time signature. It features a series of notes and rests, with a handwritten '3' above the final measure.

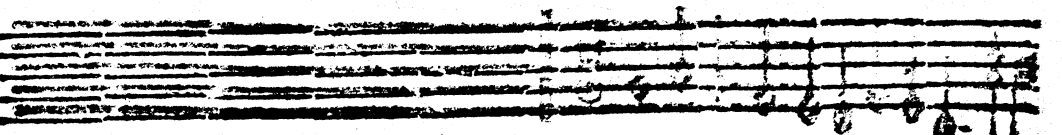
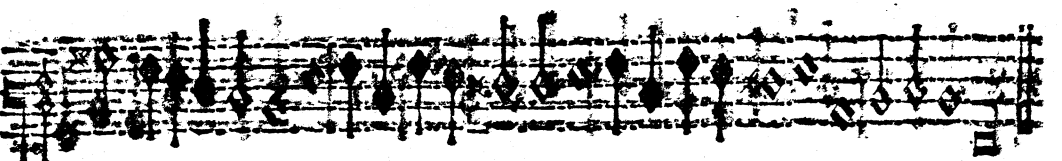
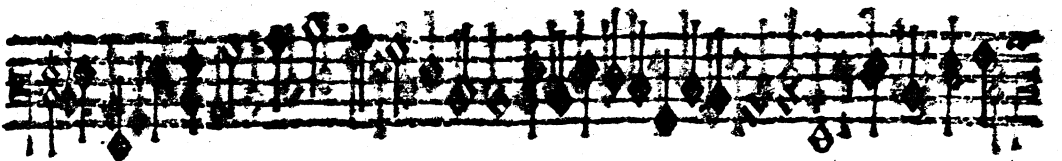
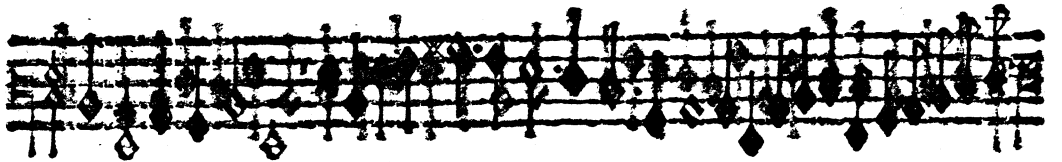
Fifth staff of musical notation, continuing the piece with a treble clef and common time signature. It features a series of notes and rests, with a handwritten '3' above the final measure.

Sixth staff of musical notation, continuing the piece with a treble clef and common time signature. It features a series of notes and rests, with a handwritten '4' above the final measure.

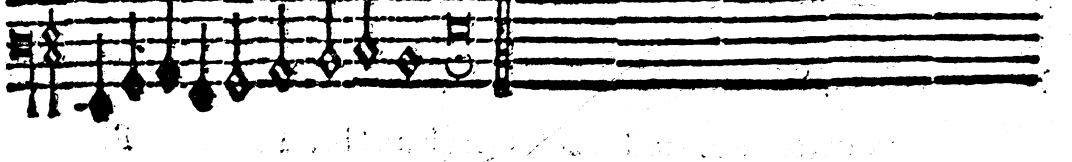
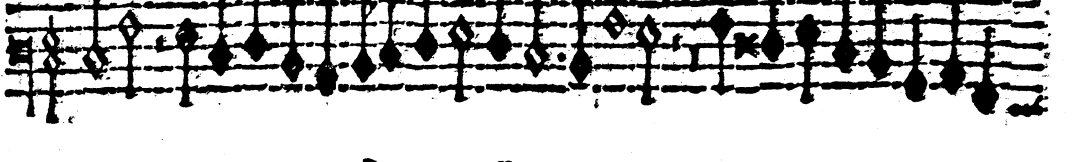
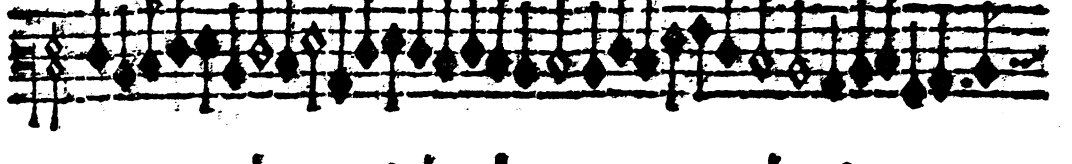
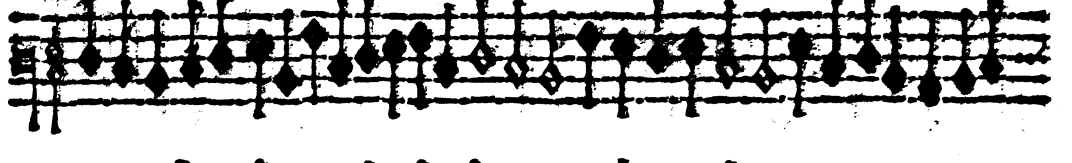
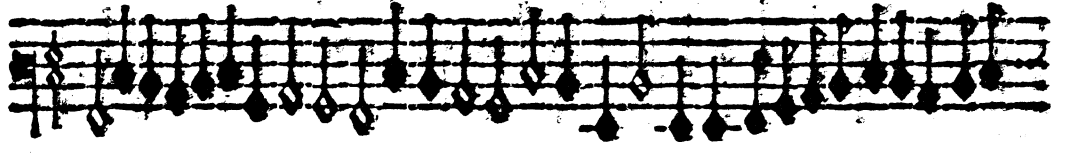
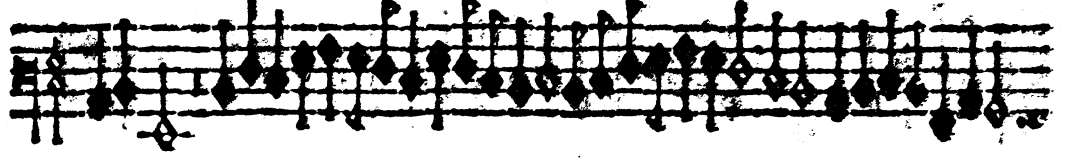
Seventh staff of musical notation, continuing the piece with a treble clef and common time signature. It features a series of notes and rests.

Eighth staff of musical notation, concluding the piece with a treble clef and common time signature. It features a series of notes and rests, ending with a double bar line and repeat sign.

Rec. & C. 5 10

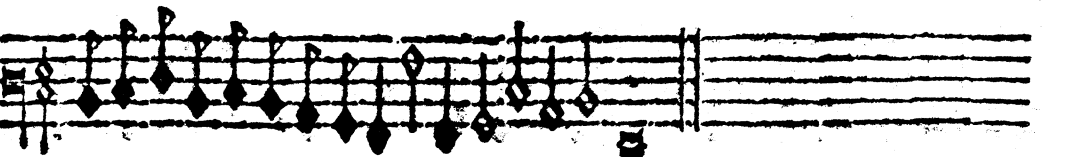
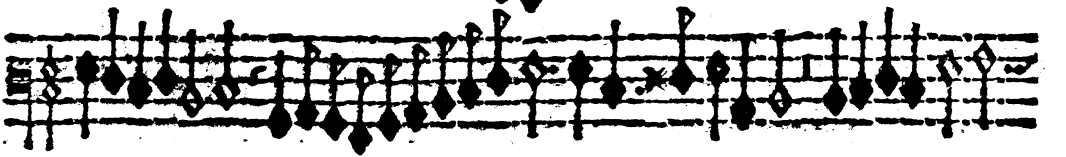
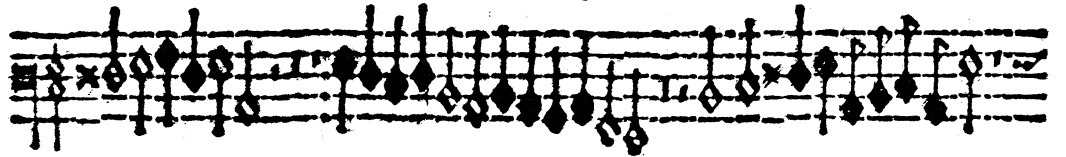
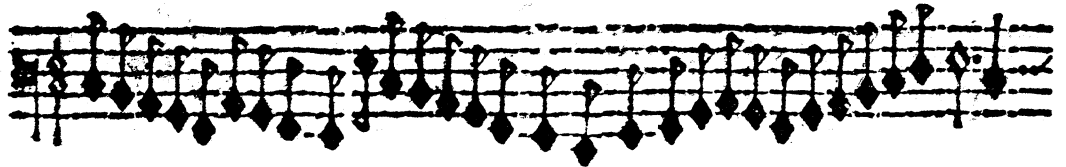
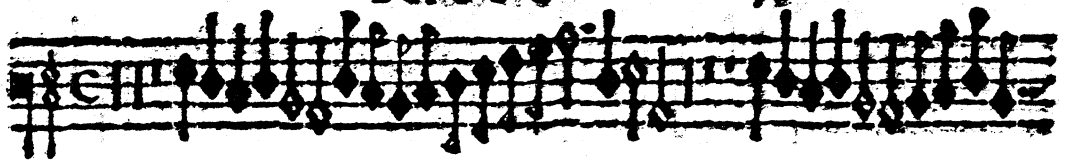


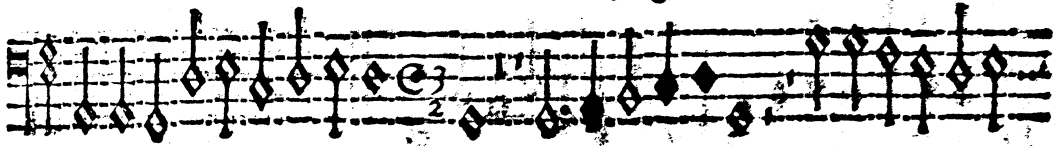
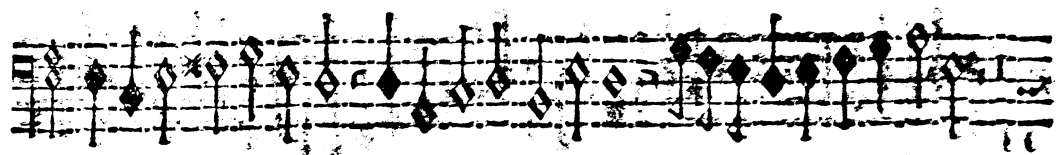
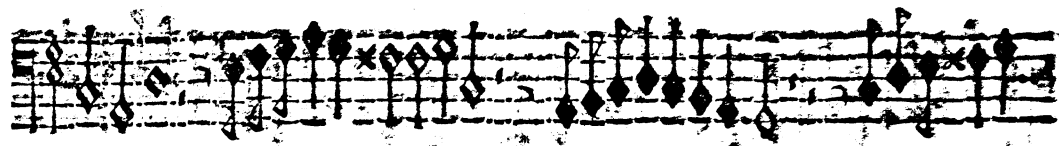
BASSO



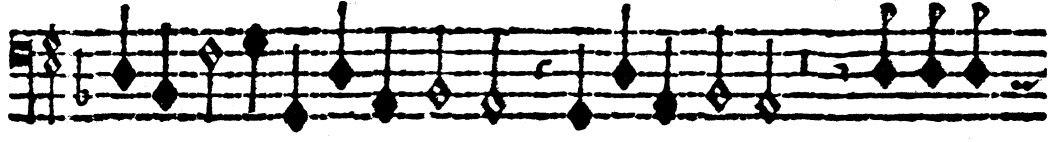
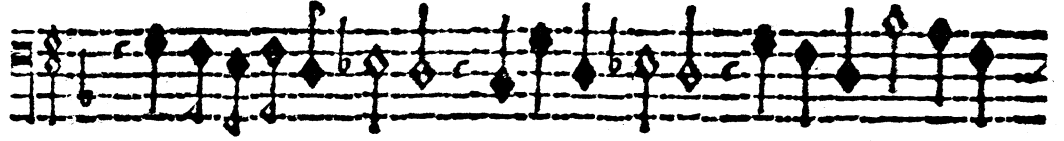
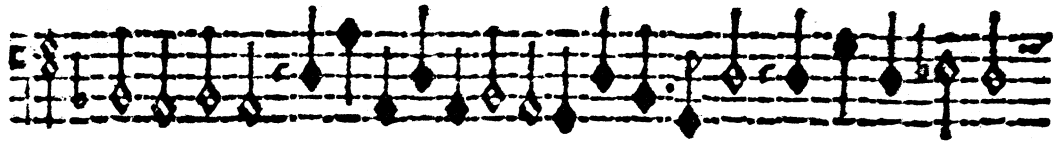
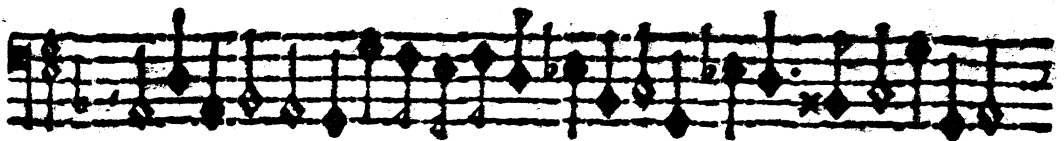
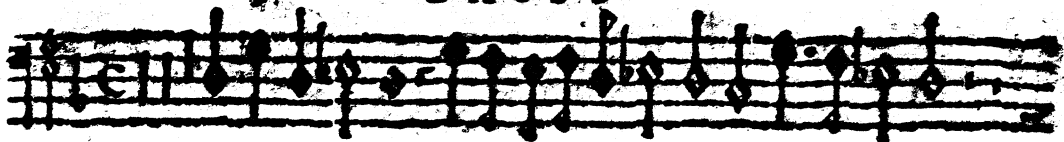
BASSO

71

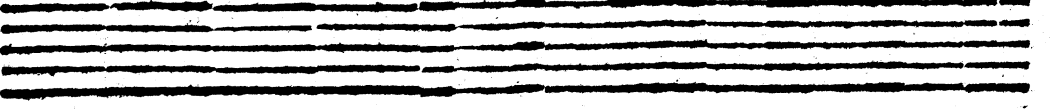
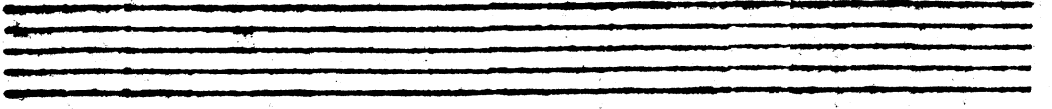
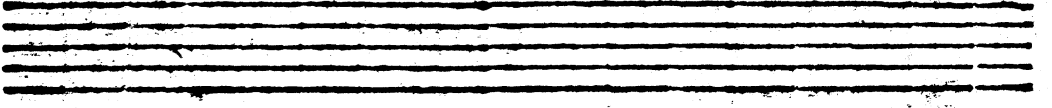
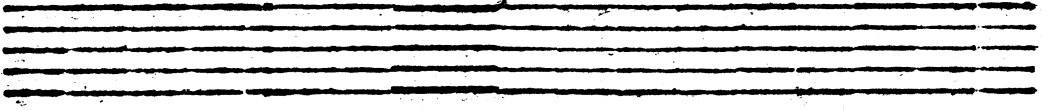
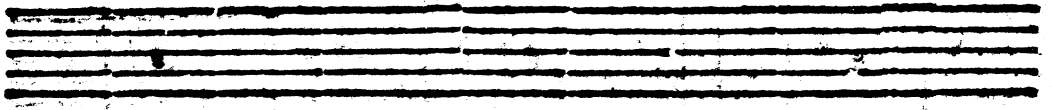
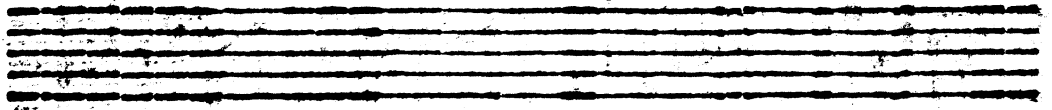
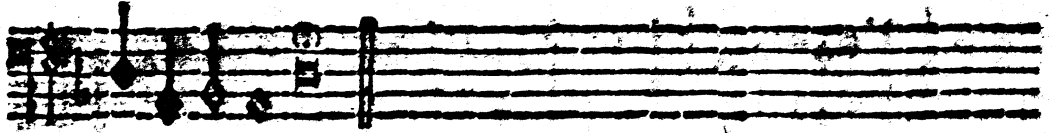
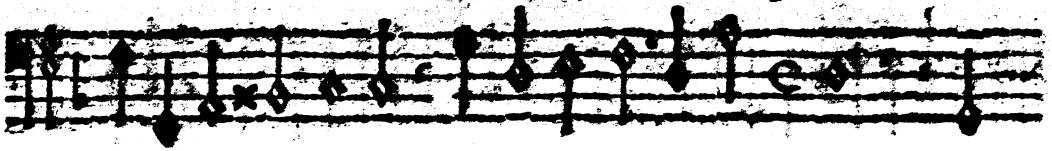


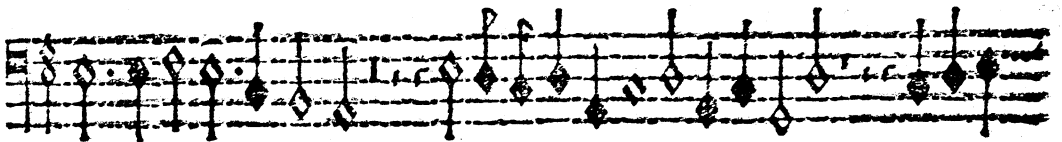
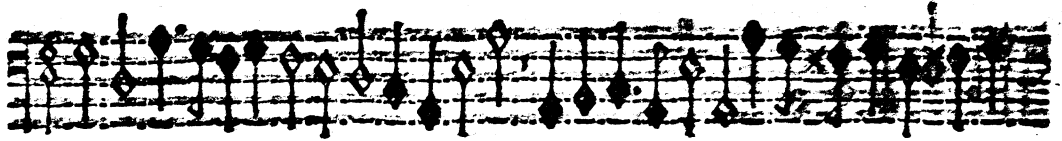
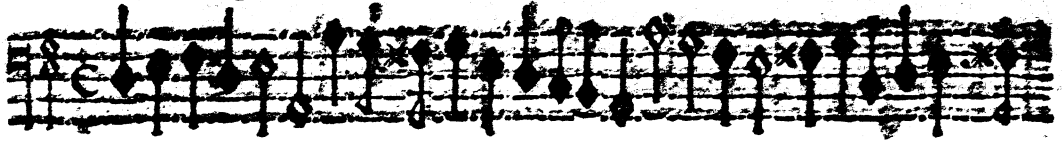


BASSO



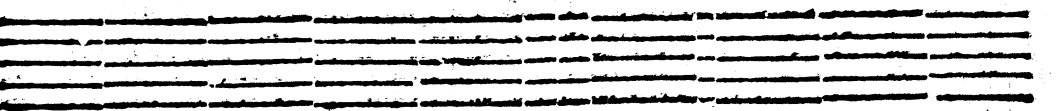
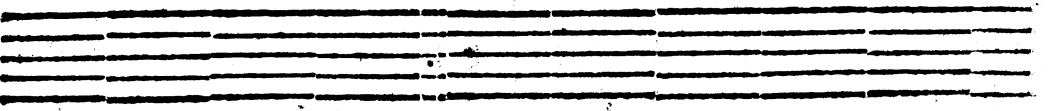
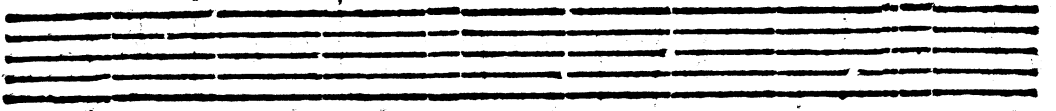
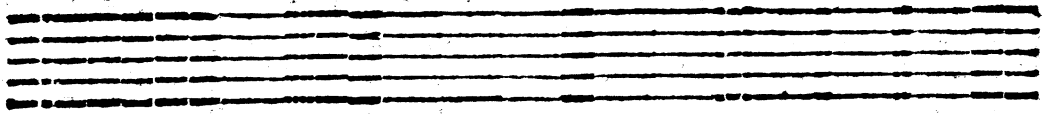
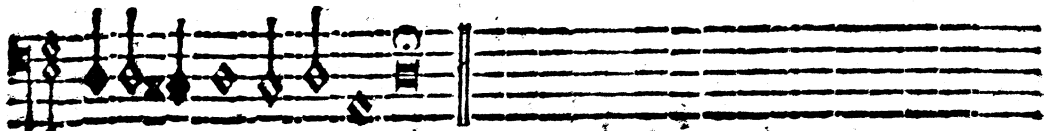
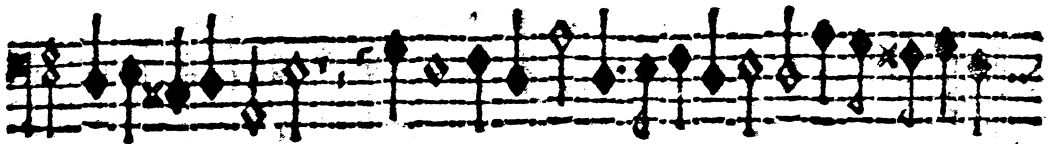
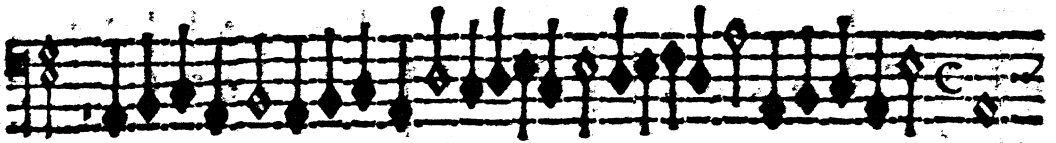
BASSO

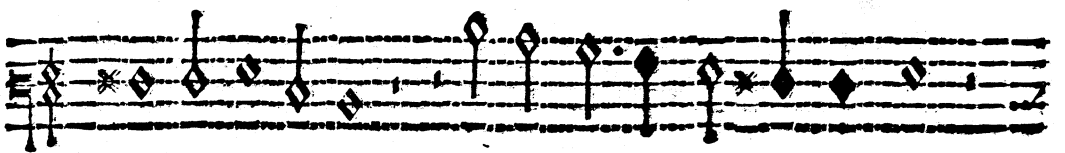
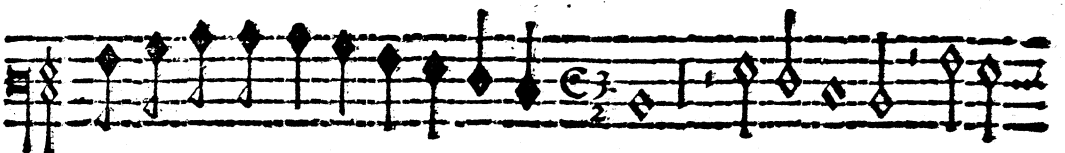
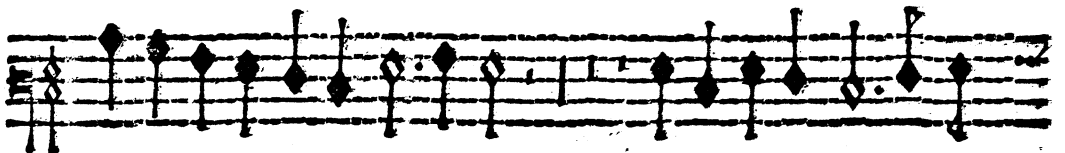
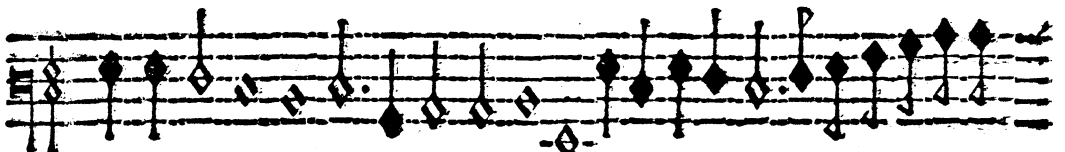
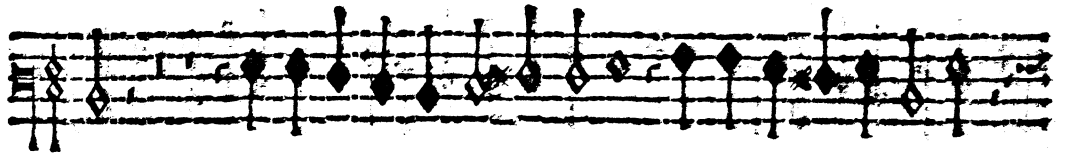




BASSO

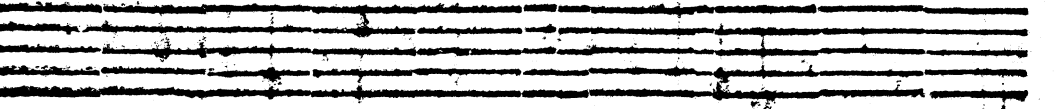
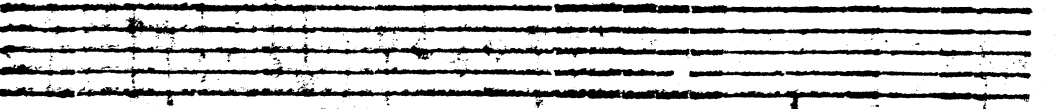
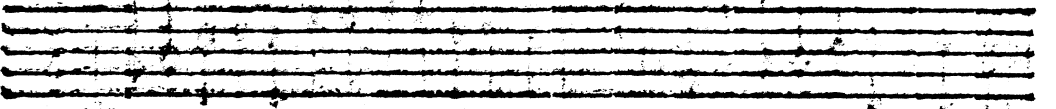
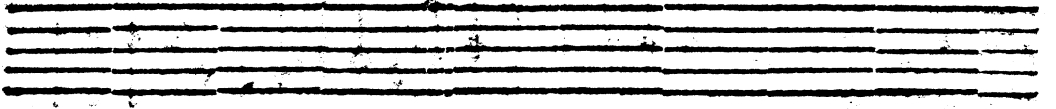
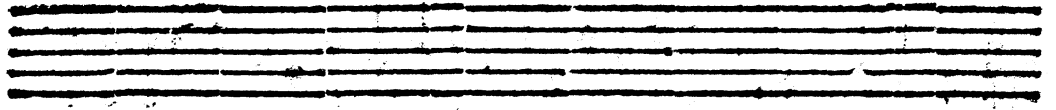
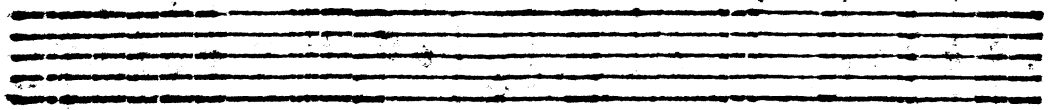
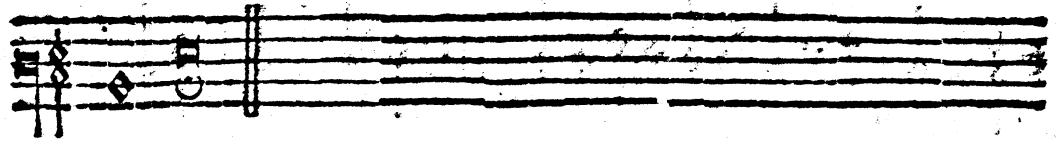
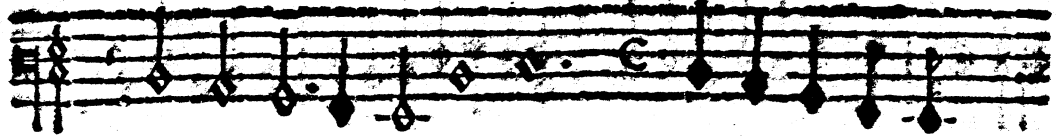
101

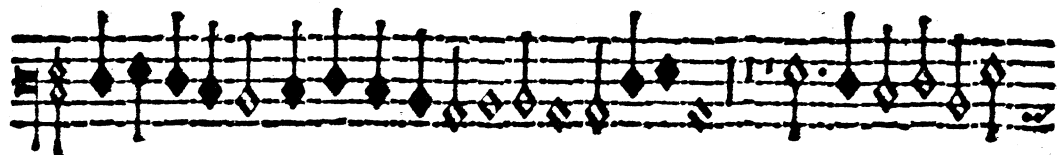
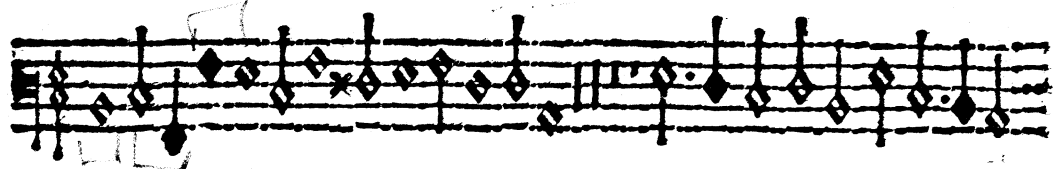
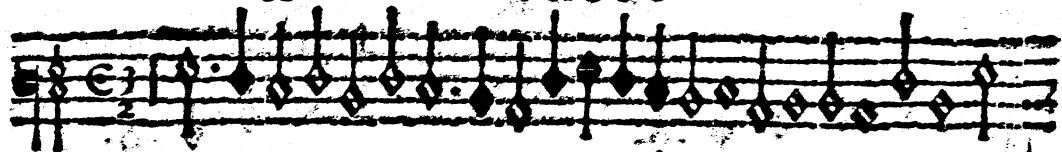




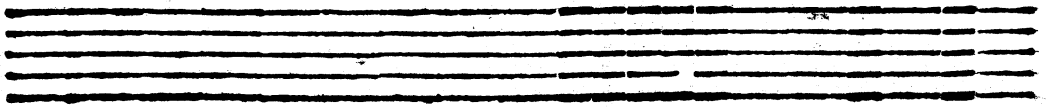
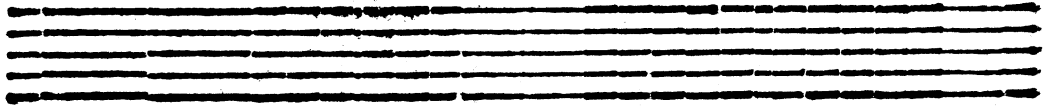
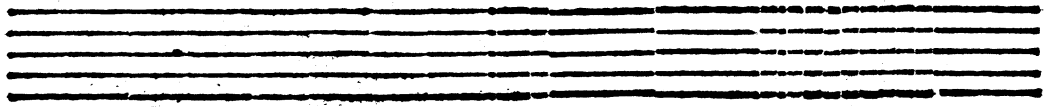
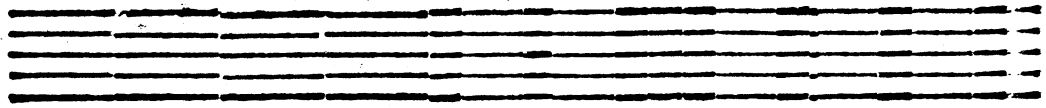
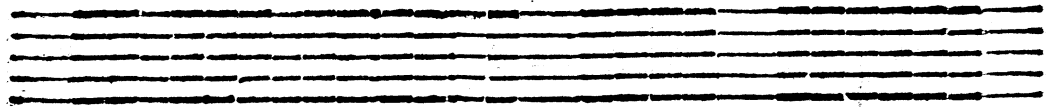
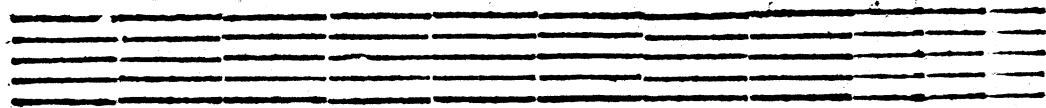
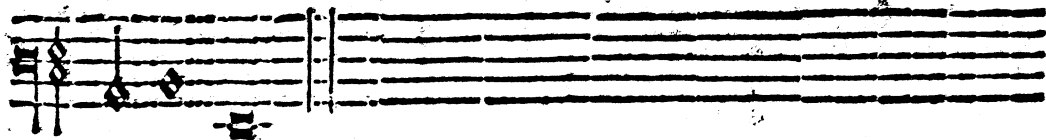
BASSO

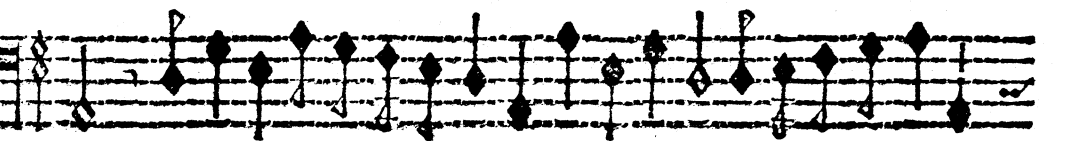
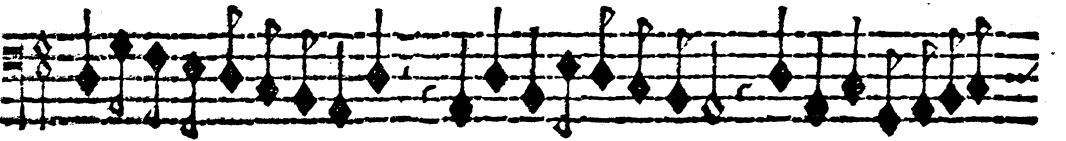
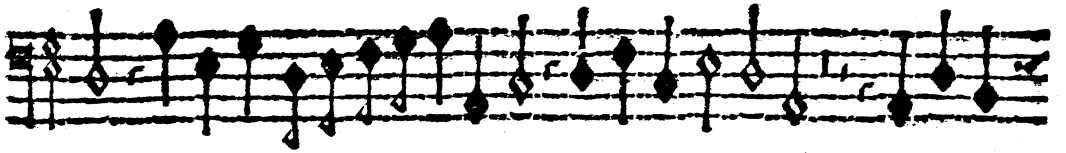
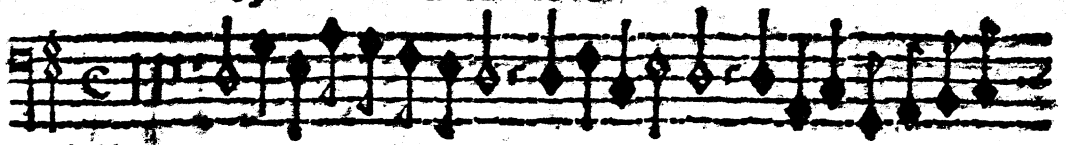
15





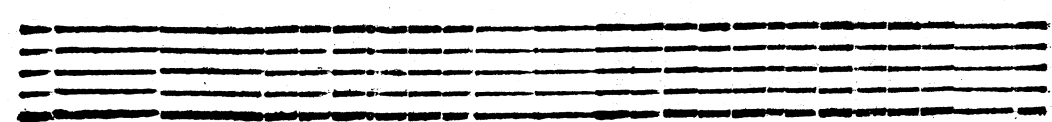
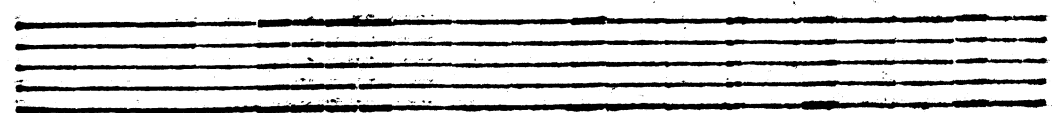
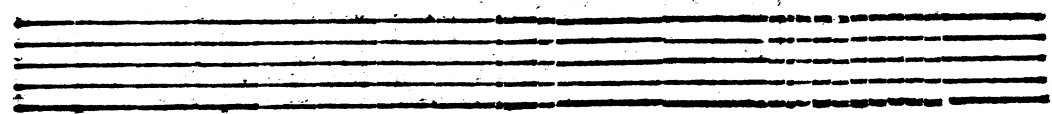
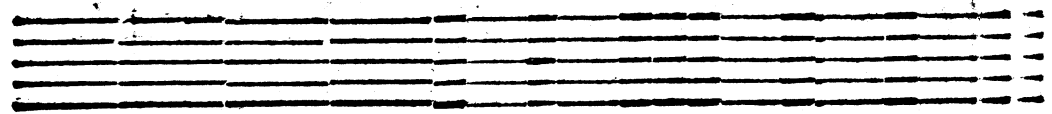
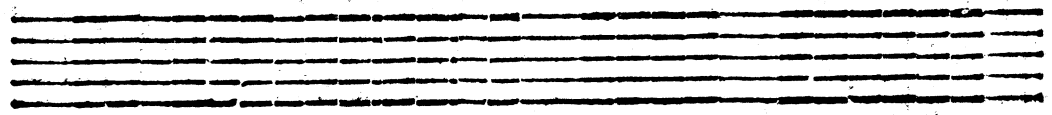
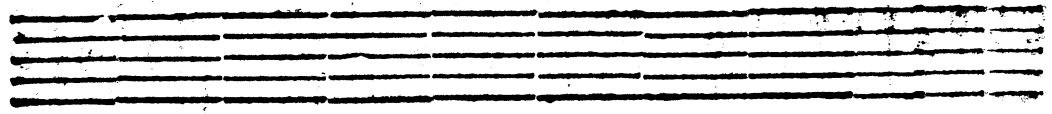
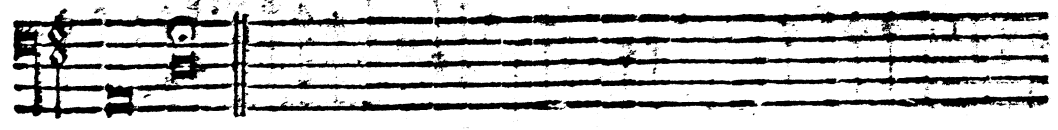
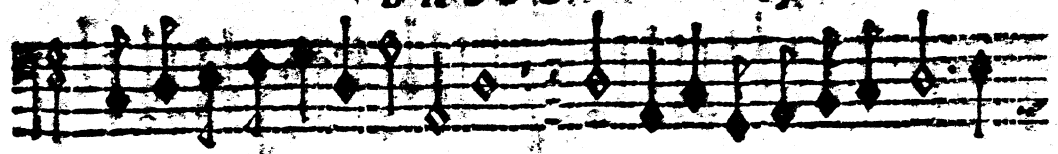
BASSO II

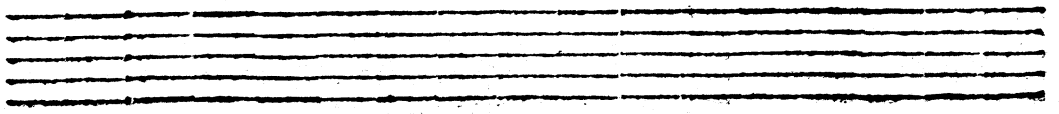
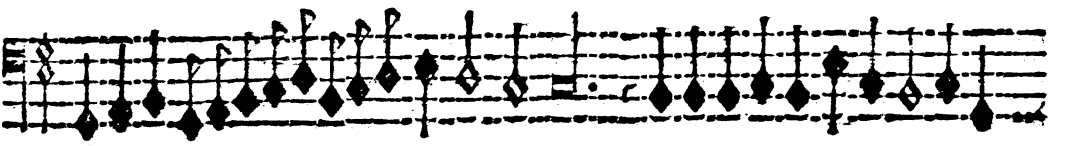
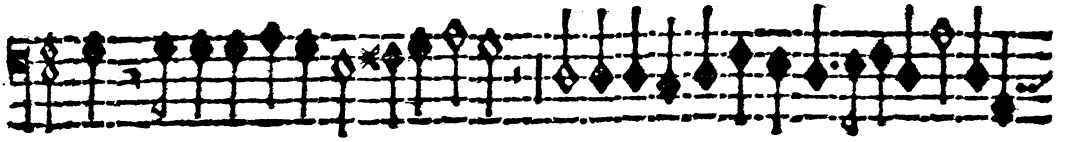




BASSO

191

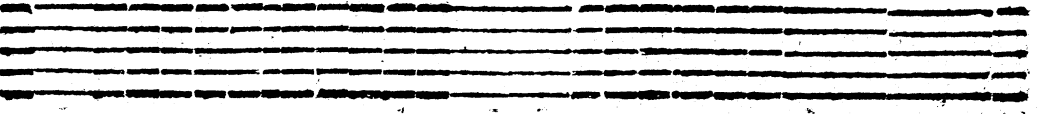
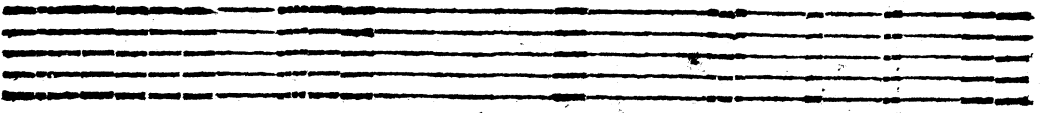
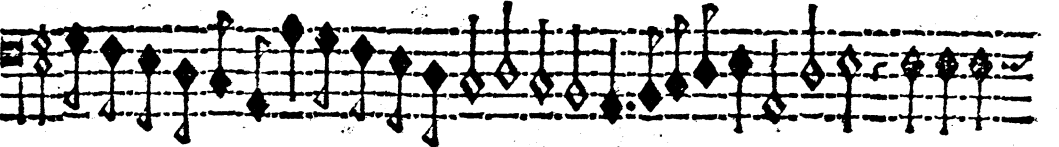
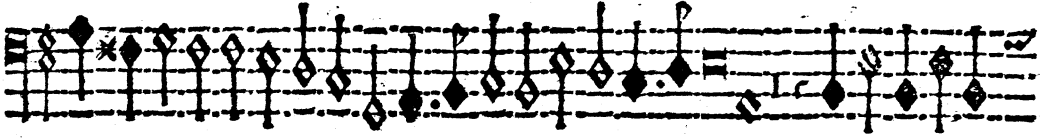
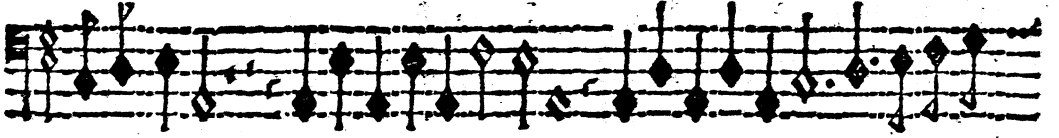
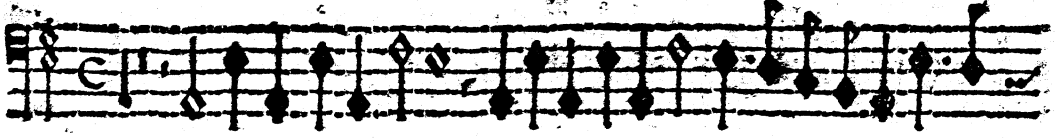


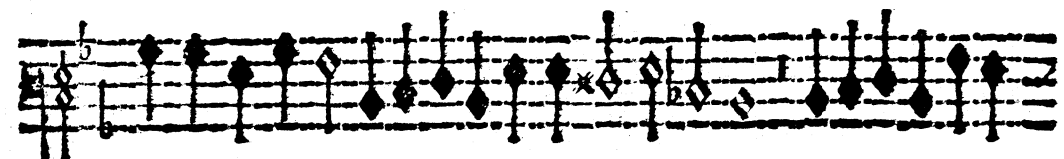
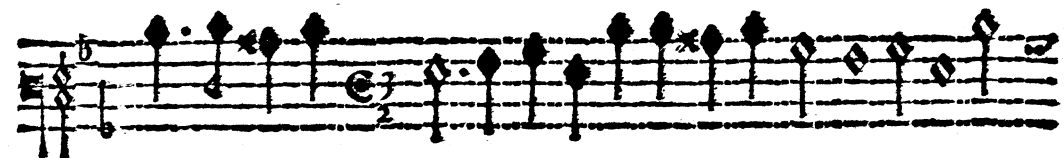
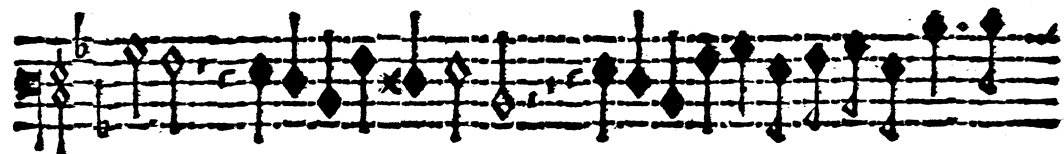
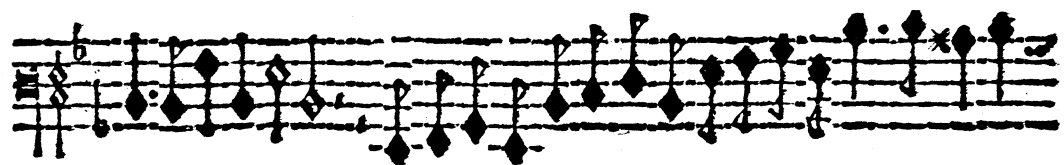
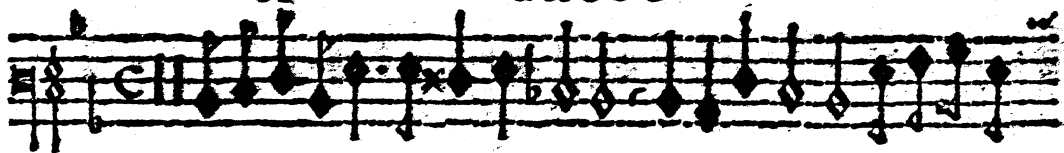


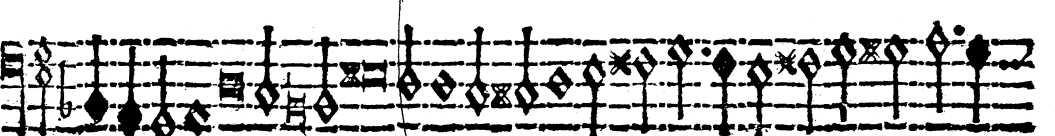
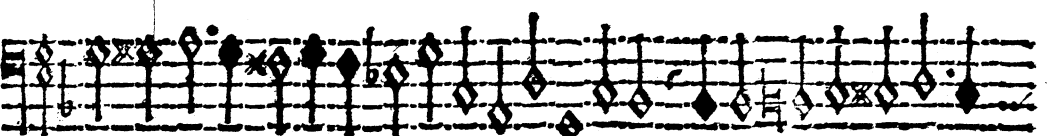
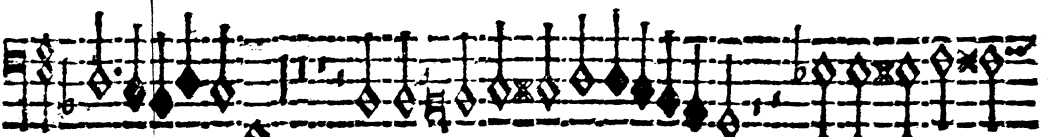
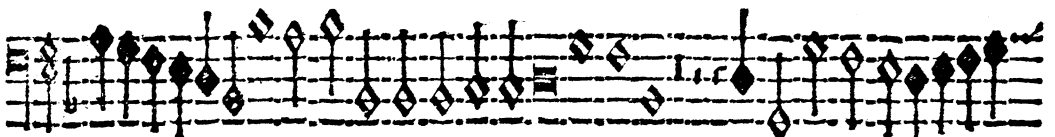
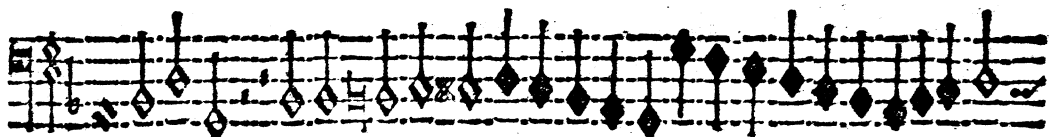
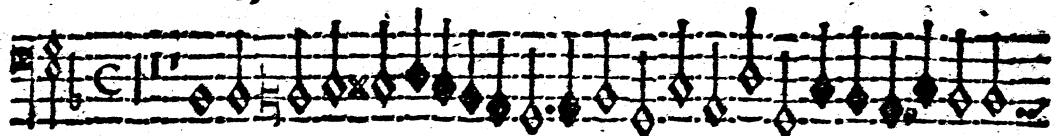
The image displays eight staves of musical notation for a Bass part. The notation is written in a historical style, likely from a 17th-century manuscript. It features a variety of rhythmic values, including minims, crotchets, and quavers, along with numerous accidentals such as sharps, flats, and naturals. The music is organized into measures by vertical bar lines. The overall appearance is that of a complex and detailed musical score.

This page of musical notation, numbered 16 and titled 'BASSO', contains eight staves of music. The notation is written in a single system and includes various rhythmic values such as eighth, sixteenth, and thirty-second notes, as well as rests and accidentals. The first staff begins with a common time signature (C) and a treble clef. The music is characterized by frequent sixteenth and thirty-second notes, often beamed together. Several notes are marked with an asterisk (*), likely indicating specific performance instructions or ornaments. The notation is dense and fills most of the page, with the final staff ending with a double bar line and repeat dots.

BASSO







BASSO

