

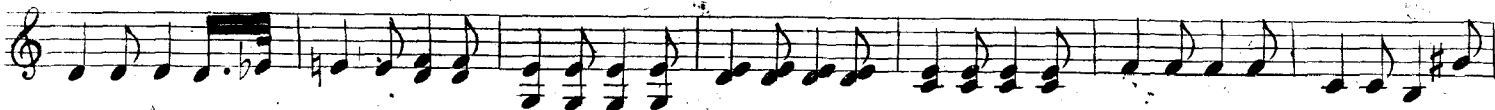
VAULT
N. 452
5749P
10 2

VIOLINO SECONDO

567870

ANDANTE
SICILIANO.

Sotto voce.



ALL. MODERATO.

(Quelle pupille tenere)

Sotto voce



VIOLINO SECONDO

7 *dolce*

tr

mf

f

p *fp* *fp* *fp* *f* *p* *f* *p* *pp*

cres. *mf*

Sotto voce

f *p*

VIOLINO SECONDO

107 3

The musical score for Violino Secondo consists of ten staves of music. The key signature is two sharps (F# and C#), and the time signature is 3/4. The score includes various dynamics and articulations:

- Staff 1: *f* (forte), *f* (forte)
- Staff 2: *mf* (mezzo-forte), *p* (piano)
- Staff 3: *dolce* (dolce)
- Staff 4: *f* (forte)
- Staff 5: *p* (piano)
- Staff 6: *cres.* (crescendo)
- Staff 7: *p* (piano)
- Staff 8: *fp* (fortissimo piano), *fp* (fortissimo piano), *fp* (fortissimo piano), *fp* (fortissimo piano), *fp* (fortissimo piano)
- Staff 9: *fp* (fortissimo piano), *f* (forte)
- Staff 10: *p* (piano), *f* (forte)

VIOLINO SECONDO

ANDANTE
A FOGGIA
DI CAVATINA.

Musical score for Violino Secondo, Andante section. The score consists of ten staves of music in treble clef, key signature of three sharps (F#, C#, G#), and 3/4 time signature. The music features a steady eighth-note pattern with frequent triplets. Performance markings include *fp* (fortissimo piano) and *f* (forte). A *cres.* (crescendo) marking is present in the fifth staff, followed by *mf* (mezzo-forte) and *p* (piano). The section concludes with *pizzic.* (pizzicato) and *arco* (arco) markings.

ALLEGRETTO.

Sotto voce

Musical score for Violino Secondo, Allegretto section. The score consists of two staves of music in treble clef, key signature of three sharps (F#, C#, G#), and 2/4 time signature. The music is marked *Sotto voce* (piano). The first staff begins with a double bar line and a repeat sign. The second staff continues the rhythmic pattern.

VIOLINO SECONDO

16⁴ 5

The musical score for Violino Secondo is written in G major (one sharp) and consists of ten staves. The music is characterized by rhythmic patterns of eighth and sixteenth notes, often grouped in beams. Dynamic markings include 'p' (piano) and 'dim.' (diminuendo). A triplet of eighth notes is marked with a '3' above it. The score concludes with a final measure marked with a '1' above the note and 'dim.' below it.

VIOLINO SECONDO

a tempo

The musical score for Violino Secondo on page 6 consists of 12 staves of music. The key signature is G major (one sharp) and the time signature is 2/4. The tempo is marked *a tempo*. The score begins with a treble clef and a key signature of one sharp. The first staff contains a series of eighth notes with slurs. The second staff features a trill (tr) and a forte (f) dynamic. The third staff includes a piano (p) dynamic. The fourth staff has a repeat sign. The fifth staff continues with eighth notes. The sixth staff has a trill. The seventh staff features a forte (f) dynamic. The eighth staff has a piano (p) dynamic. The ninth staff continues with eighth notes. The tenth staff has a piano (p) dynamic. The eleventh staff continues with eighth notes. The twelfth staff concludes the piece with a double bar line.