

Symphonie n°2 en mi bémol

Violon 2

François-Joseph GOSSEC

Largo

7

20

27

31

36

42

49

60

67

73

Segue

Allegro molto

Musical score for Violon 2, Allegro molto. The score is written in treble clef, key signature of two flats (B-flat and E-flat), and common time (C). The tempo is marked "Allegro molto". The score consists of 66 measures, divided into 11 systems of six measures each. The first system (measures 1-6) begins with a treble clef, a key signature of two flats, and a common time signature. The second system (measures 7-12) starts with a measure rest. The third system (measures 13-18) starts with a measure rest. The fourth system (measures 19-24) starts with a measure rest. The fifth system (measures 25-30) starts with a measure rest. The sixth system (measures 31-36) starts with a measure rest. The seventh system (measures 37-42) starts with a measure rest. The eighth system (measures 43-48) starts with a measure rest. The ninth system (measures 49-54) starts with a measure rest. The tenth system (measures 55-60) starts with a measure rest. The eleventh system (measures 61-66) starts with a measure rest. Dynamics include *p* (piano) at measure 21, *f* (forte) at measure 40, and *cresc.* (crescendo) at measure 59. The score concludes with a double bar line and a repeat sign at the end of the final system.

76

83

90

102

113

120

126

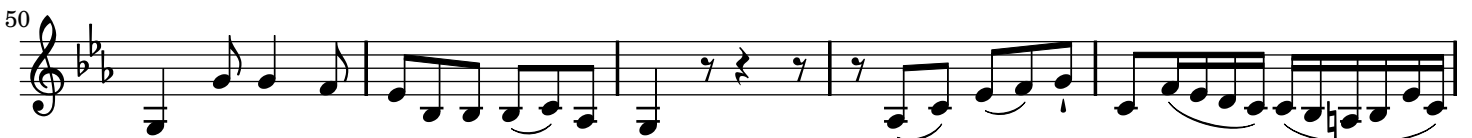
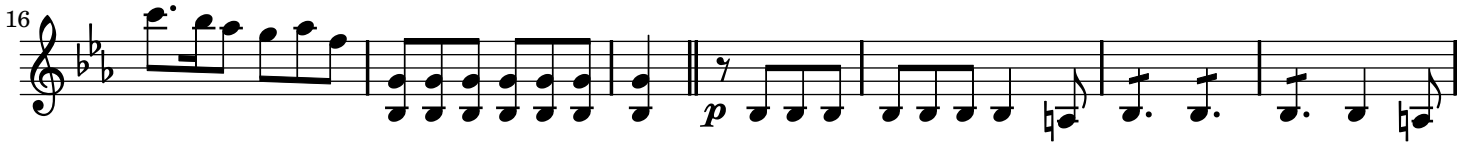
133

140

147

154

Allegretto Pastorale gracioso - Presto



55



61

Presto



68



77



86



96




104



113



123



133

