

SUITE

pour grand orchestre, tirée de la partition du ballet „LA BELLE AU BOIS DORMANT“

de P. TSCHAÏKOWSKY, Op. 66a.

Nº 1. INTRODUCTION. LA FÉE DES LILAS.

Corno III in F.

Allegro vivace.

fff

fff

fff

fff

Andantino.

20

21

mf

mf cresc.

Più mosso.

f

ff

cresc.

ffff

rit. molto

p

Andante sostenuto.

19

20

p

pp

son bouches

No 2. Adagio. Pas d'action.

Corno III in F.

Andante.

2
mp mf f di - mi - nu - en - do

Adagio maestoso.

5 1
pp f cresc.

1
ff f cresc. ff f

poco stringendo
p

cre - scen - do f

Più mosso.

1 1
ff rit.

Tempo I.

f

f mp mf
6/11 II con

Nº 3. Pas de caractère. *TACET.*

Nº 4. Panorama.

Handwritten signature: ШКОЛК

No 5. Valse.

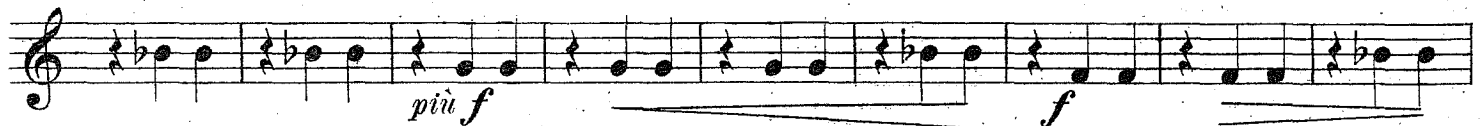
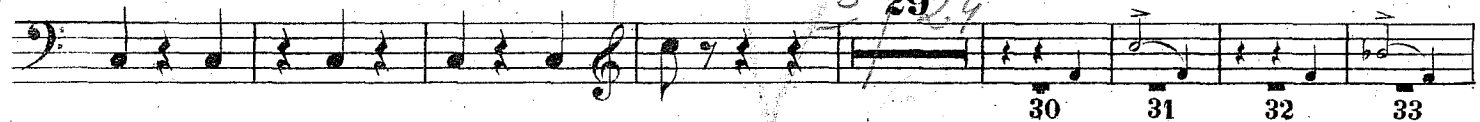
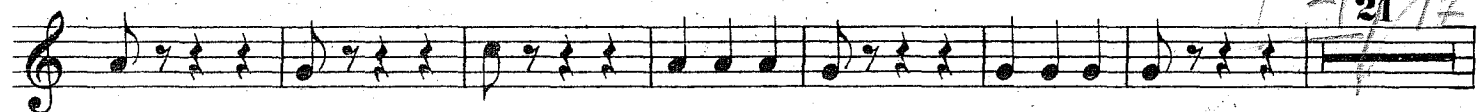
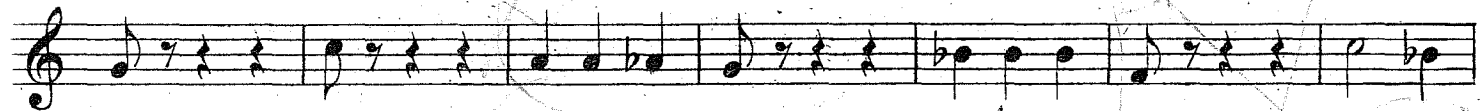
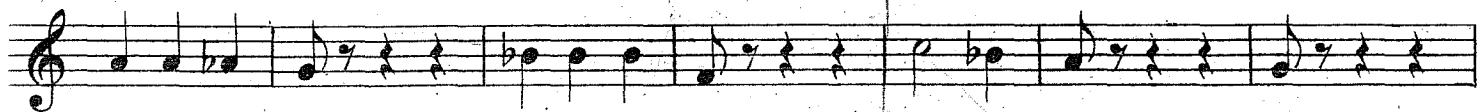
Corno III in F.

Allegro. (Tempo di Valse)

ff p cre - scen - do mp cre - scen -
 do mf cresc. f cre - scen - do

① p
 più f
 f p
 f ff 2 ②

Corno III in F.



Corno III in F.

Handwritten notes: ϕ 1-25-187