

M3 125  
322

# Sonata

Violoncello

Wd 2402-66

Francesco Maria Veracini  
(1690-1768)  
Op. 2 Nr. 1

## TOCCATA

Adagio, e come stà\*)

3 *mf* *s.* *s.* *s.*

10 *s.* 1 2 3 4 **Presto** 11

29 **Adagio, Piano, e Staccato** *Viol.* **Adagio** *mf* 2

36 **Presto** 11 **Adagio, Piano, e Staccato** *Viol.* *mf*

51 **Adagio** *mf* 2 *mf*

## CAPRICCIO I

Allegro ma non presto

4 *Viol.* *f*

10

15

20 2

\*) „Wie es steht“, d. h. ohne Verzierungen!

Violoncello

27 *f*

31 *p*

35 *f*

39 *p*

43 *f p f*

47

51 *p f*

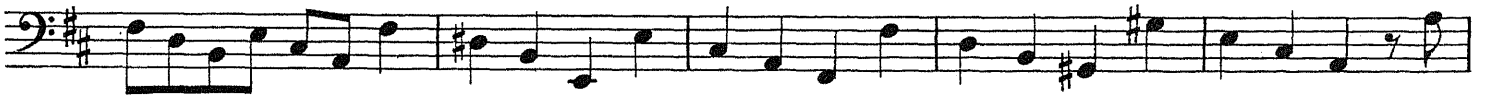
55

59

63

Violoncello

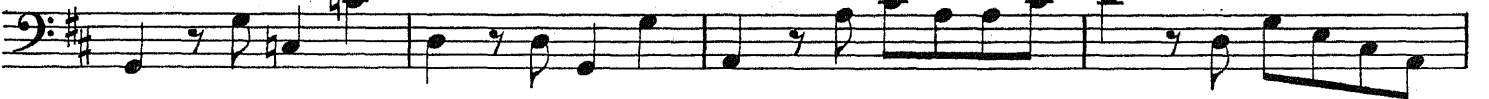
68



73



77



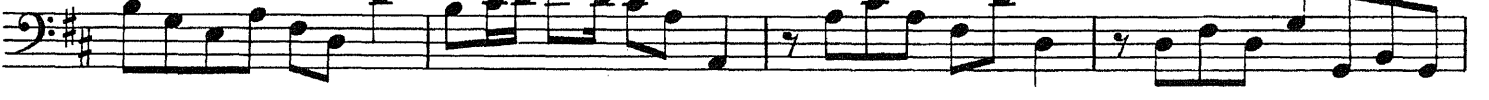
81



85



90



94



98



102



108



## Violoncello

Allegro



8



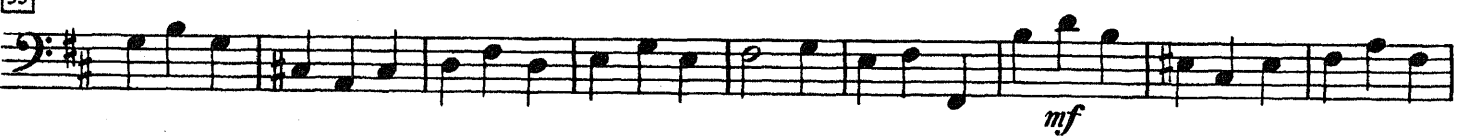
16



24



33



42



50



59



67



## EPILOGO DELLA TOCCATA

Largo, e Nobile

1



Violoncello

4

7

12

15

19

21

26

31

36

40

CAPRICCIO II

Allegro, e Brillante

Viol.

22

Musical score for Violoncello, Capriccio II, measures 22-122. The score is written in bass clef with a key signature of two sharps (F# and C#) and a 3/4 time signature. It consists of ten staves of music. Measure numbers 31, 40, 50, 60, 68, 78, 88, 102, 112, and 122 are indicated in boxes at the beginning of their respective staves. Dynamics include *f* (forte) and *mf* (mezzo-forte). Fingerings are indicated by numbers 1-5 above notes. The music features a mix of eighth and sixteenth notes, often beamed together, with some slurs and accents.

Violoncello

136

Più Allegro



145



153



163



175



187



197



208



219



230



238



