

T. WESTROP'S
 120 COUNTRY DANCES, JIGS, REELS, HORNPIPES, &c.
 for the VIOLIN.

SIR ROGER DE COVERLEY.

N^o 1.

Country Dance.

DROPS OF BRANDY.

N^o 2.

Country Dance.

BARNEY BRALLAGHAN.

N^o 3.

Country Dance.

THE GRINDERS.

N^o 4.

Country Dance.

Nº 5.

IRISH MERRY MAKING.

Country Dance.

Two staves of musical notation for 'IRISH MERRY MAKING'. The first staff is in treble clef, key of D major (two sharps), and 3/8 time. The second staff is in bass clef, also in D major and 3/8 time. The music consists of eighth and sixteenth notes, with repeat signs at the end of each staff.

Nº 6.

THE TRIUMPH.

Country Dance

Two staves of musical notation for 'THE TRIUMPH'. The first staff is in treble clef, key of D major (two sharps), and 4/4 time. The second staff is in bass clef, also in D major and 4/4 time. The music features eighth and sixteenth notes, with repeat signs at the end of each staff.

Nº 7.

THE WHITE COCKADE.

Country Dance.

Two staves of musical notation for 'THE WHITE COCKADE'. The first staff is in treble clef, key of D major (two sharps), and 2/4 time. The second staff is in bass clef, also in D major and 2/4 time. The music consists of eighth and sixteenth notes, with repeat signs at the end of each staff.

Nº 8.

HASTE TO THE WEDDING.

Country Dance.

Two staves of musical notation for 'HASTE TO THE WEDDING'. The first staff is in treble clef, key of D major (two sharps), and 6/8 time. The second staff is in bass clef, also in D major and 6/8 time. The music consists of eighth and sixteenth notes, with repeat signs at the end of each staff.

Nº 9.

OFF SHE GOES.

Country Dance.

Two staves of musical notation for 'OFF SHE GOES'. The first staff is in treble clef, key of D major (two sharps), and 6/8 time. The second staff is in bass clef, also in D major and 6/8 time. The music consists of eighth and sixteenth notes, with repeat signs at the end of each staff.

Nº 10.

JACK'S ALIVE.

Country Dance.

Two staves of musical notation for 'JACK'S ALIVE'. The first staff is in treble clef, key of D major (two sharps), and 6/8 time. The second staff is in bass clef, also in D major and 6/8 time. The music consists of eighth and sixteenth notes, with repeat signs at the end of each staff.

ZIP COON; or PADDY DON'T CARE.

Nº 11.

Country Dance.

Two staves of musical notation for the dance 'Zip Coon; or Paddy Don't Care'. The first staff is in treble clef with a key signature of one sharp (F#) and a 2/4 time signature. The second staff continues the melody. The piece concludes with a double bar line and repeat dots.

THE RATCATCHER'S DAUGHTER.

Nº 12.

Country Dance.

Two staves of musical notation for the dance 'The Ratcatcher's Daughter'. The first staff is in treble clef with a key signature of one sharp (F#) and a 2/4 time signature. The second staff continues the melody. The piece concludes with a double bar line and repeat dots.

THE PLOUGH BOY.

Nº 13.

Country Dance.

Two staves of musical notation for the dance 'The Plough Boy'. The first staff is in treble clef with a key signature of one sharp (F#) and a 2/4 time signature. The second staff continues the melody. The piece concludes with a double bar line and repeat dots, followed by the initials 'D.C.' at the bottom right.

THE PERFECT CURE.

Nº 14.

Country Dance.

Two staves of musical notation for the dance 'The Perfect Cure'. The first staff is in treble clef with a key signature of one sharp (F#) and a 6/8 time signature. The second staff continues the melody. The piece concludes with a double bar line and repeat dots.

THE WHOLE HOG OR NONE.

Nº 15.

Country Dance.

Two staves of musical notation for the dance 'The Whole Hog or None'. The first staff is in treble clef with a key signature of one sharp (F#) and a 6/8 time signature. The second staff continues the melody. The piece concludes with a double bar line and repeat dots, followed by the initials 'D.C.' at the bottom right.

LUCY NEAL.

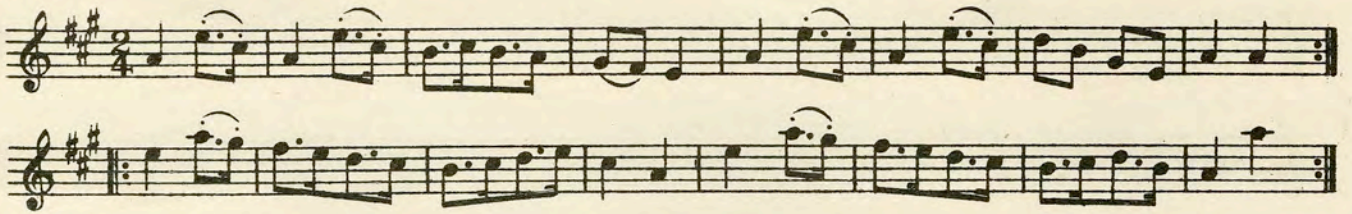
Nº 16.

Country Dance.

Two staves of musical notation for the dance 'Lucy Neal'. The first staff is in treble clef with a key signature of one sharp (F#) and a 2/4 time signature. The second staff continues the melody. The piece concludes with a double bar line and repeat dots.

TINK A TINK.

Country Dance.

N^o 17.

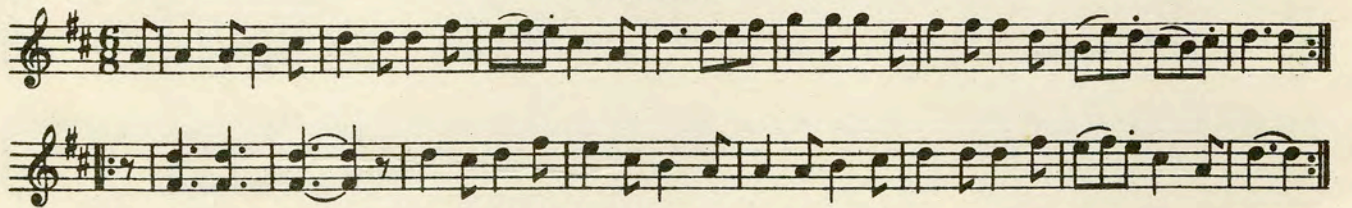
THE YELLOW ROSE OF TEXAS.

Country Dance.

N^o 18.

THE EXHIBITION OF 1862.

Country Dance.

N^o 19.

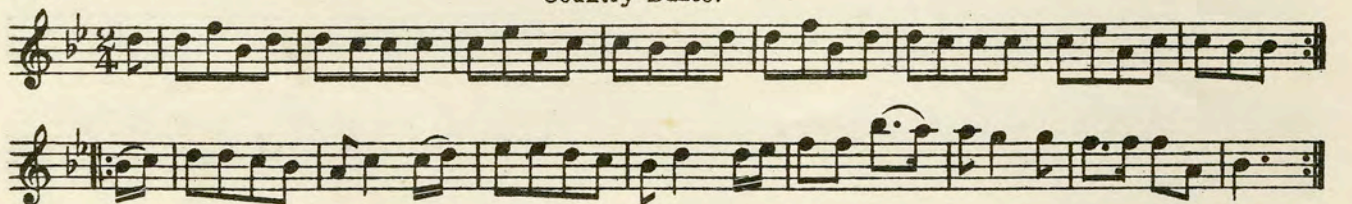
CHEER UP, SAM.

Country Dance.

N^o 20.

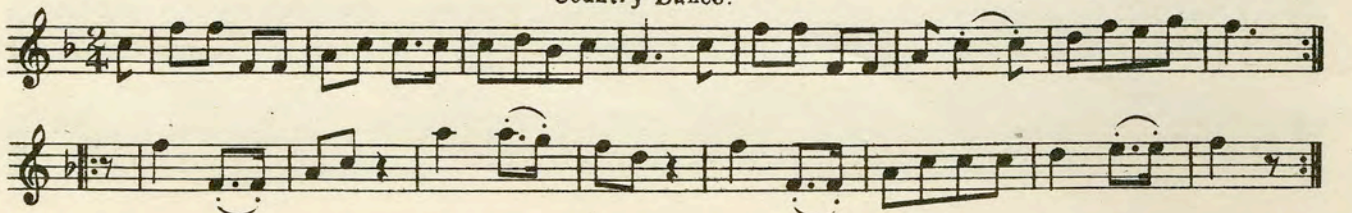
SO EARLY IN THE MORNING.

Country Dance.

N^o 21.

WAIT FOR THE WAGGON.

Country Dance.

N^o 22.

KISS ME QUICK AND GO. (Country Dance.)

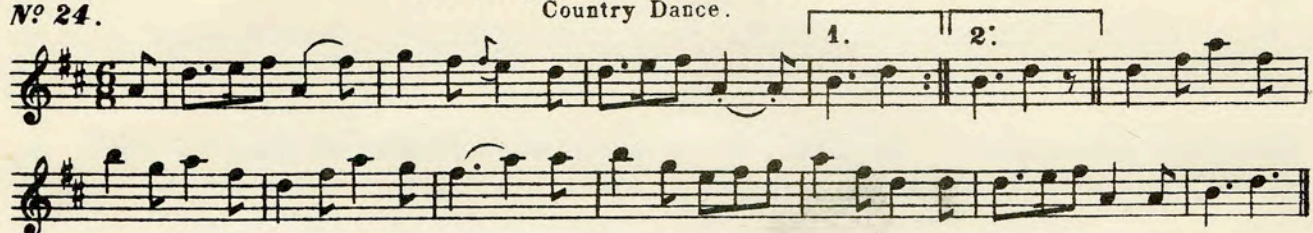
N^o 23.



THE QUAKER'S WIFE.

N^o 24.

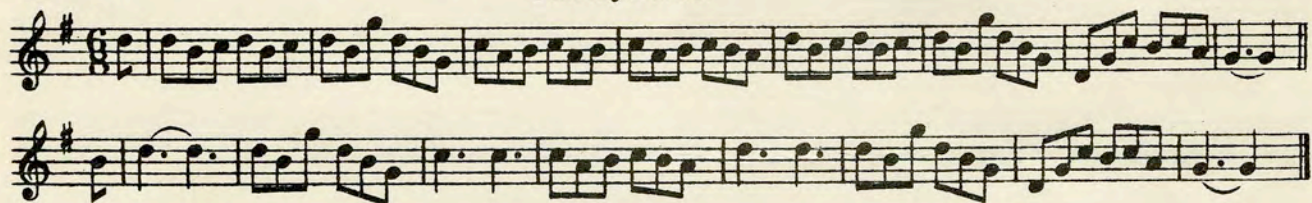
Country Dance.



WHAT CAN THE MATTER BE ?

N^o 25.

Country Dance.



THE IRISH WEDDING.

N^o 26.

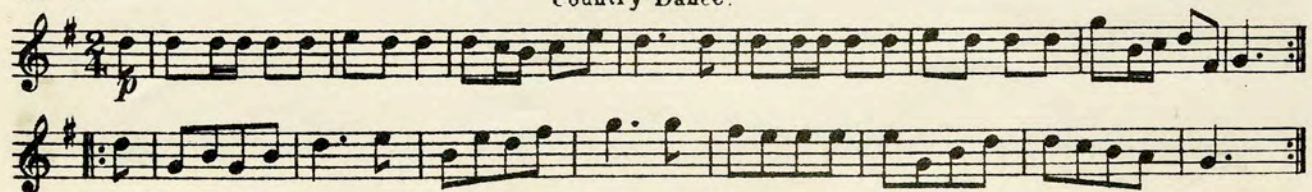
Country Dance.



WHILE I MY BANJO PLAY.

N^o 27.

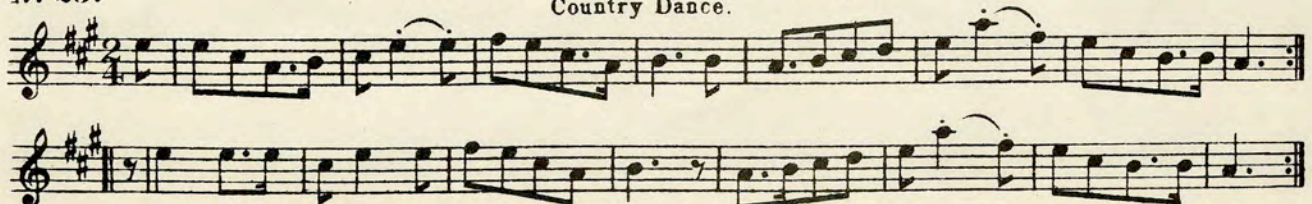
Country Dance.



RING, RING THE BANJO.

N^o 28.

Country Dance.



PULL AWAY CHEERILY.

N^o 29.

Country Dance.

Two staves of musical notation for 'PULL AWAY CHEERILY.' The first staff is in 6/8 time and the second is in 7/8 time. The piece concludes with the marking 'D.C.' (Da Capo).

N^o 30.

IF THE HEART OF A MAN.

Country Dance.

Two staves of musical notation for 'IF THE HEART OF A MAN.' The piece is in 6/8 time and ends with a double bar line and repeat dots.

N^o 31.

DIXEY'S LAND.

Country Dance.

Two staves of musical notation for 'DIXEY'S LAND.' The piece is in 2/4 time with a key signature of one sharp (F#). It concludes with a double bar line and repeat dots.

N^o 32.

THE HONEY-MOON.

Country Dance.

Two staves of musical notation for 'THE HONEY-MOON.' The piece is in 2/4 time with a key signature of one sharp (F#). It concludes with a double bar line and repeat dots.

N^o 33.

THE TANK.

Country Dance.

Two staves of musical notation for 'THE TANK.' The piece is in 2/4 time with a key signature of one sharp (F#). It includes dynamic markings: *f* (forte) at the beginning and *mf* (mezzo-forte) in the middle. It concludes with a double bar line and repeat dots.

N^o 34.

KINLOCH OF KINLOCH.

Country Dance.

Two staves of musical notation for 'KINLOCH OF KINLOCH.' The piece is in 6/8 time with a key signature of one sharp (F#). It concludes with a double bar line and repeat dots.

OH, KISS, BUT NEVER TELL.

Country Dance.

N^o 35.

Musical notation for 'OH, KISS, BUT NEVER TELL.' consisting of two staves of music in 2/4 time, key of B-flat major. The first staff begins with a treble clef, a key signature of two flats, and a 2/4 time signature. The melody is written in a single line. The second staff continues the melody and ends with a double bar line and the initials 'D.C.' (Da Capo).

THE MINSTREL BOY.

Country Dance.

N^o 36.

Musical notation for 'THE MINSTREL BOY.' consisting of two staves of music in 2/4 time, key of B-flat major. The first staff begins with a treble clef, a key signature of two flats, and a 2/4 time signature. The melody is written in a single line. The second staff continues the melody and ends with a double bar line and the initials 'D.C.' (Da Capo).

from "ROBERT LE DIABLE."

Country Dance.

N^o 37.

Musical notation for 'from "ROBERT LE DIABLE."' consisting of three staves of music in 6/8 time, key of B-flat major. The first staff begins with a treble clef, a key signature of two flats, and a 6/8 time signature. The melody is written in a single line. The second and third staves continue the melody and end with a double bar line and the initials 'D.C.' (Da Capo).

THE ROSE TREE.

Country Dance.

N^o 38.

Musical notation for 'THE ROSE TREE.' consisting of two staves of music in 2/4 time, key of B-flat major. The first staff begins with a treble clef, a key signature of two flats, and a 2/4 time signature. The melody is written in a single line. The second staff continues the melody and ends with a double bar line.

WE WON'T GO HOME TILL MORNING.

Country Dance.

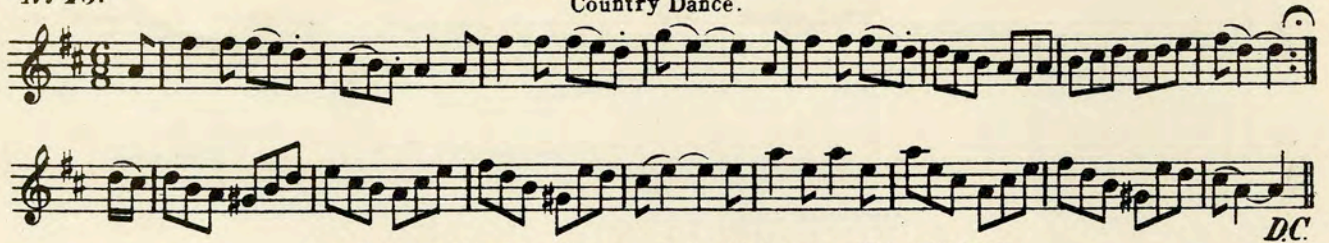
N^o 39.

Musical notation for 'WE WON'T GO HOME TILL MORNING.' consisting of two staves of music in 6/8 time, key of B-flat major. The first staff begins with a treble clef, a key signature of two flats, and a 6/8 time signature. The melody is written in a single line. The second staff continues the melody and ends with a double bar line.

MICHAEL WIGGINS.

N^o 40.

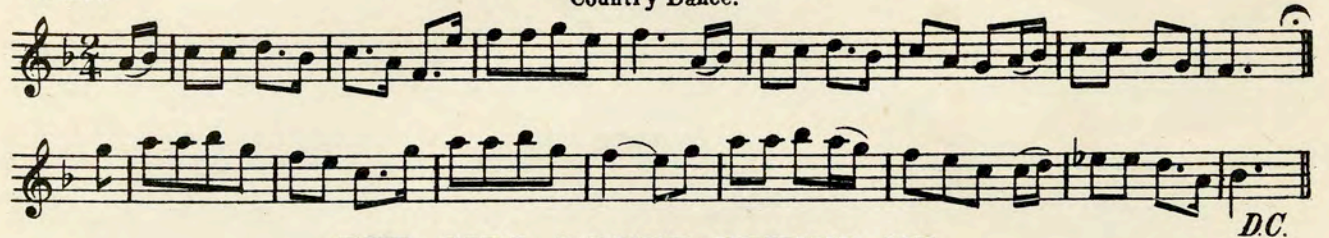
Country Dance.



THE DARK GIRL DRESSED IN BLUE.

N^o 41.

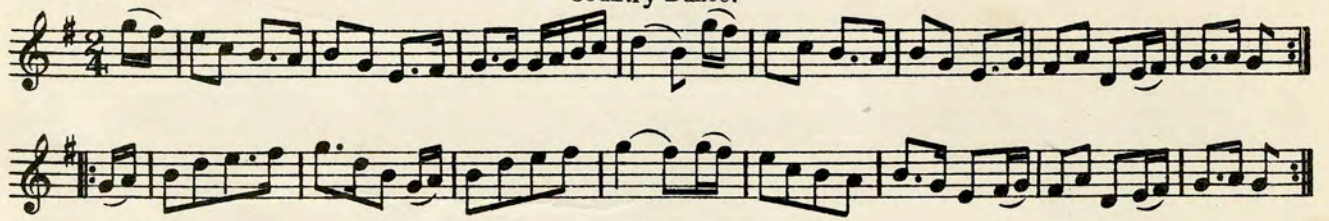
Country Dance.



THE GIRL I LEFT BEHIND ME.

N^o 42.

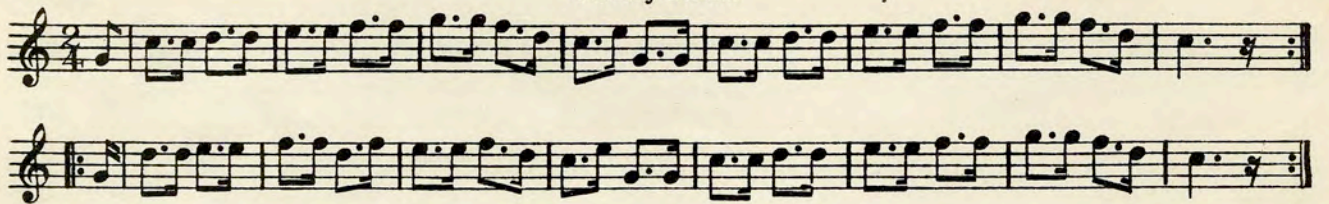
Country Dance.



HOOP DE DOODEN DO!

N^o 43.

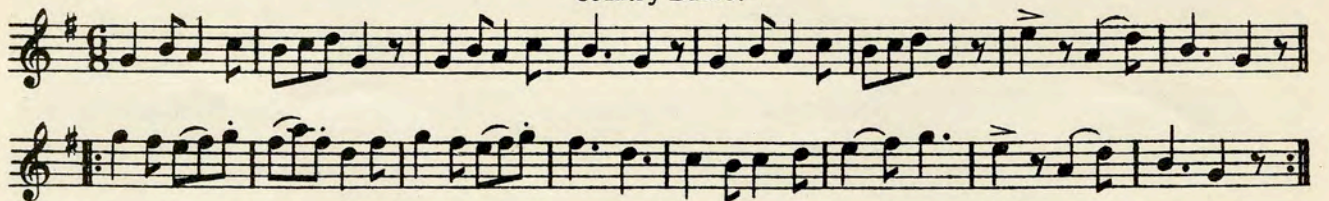
Country Dance.



POP GOES THE WEASEL.

N^o 44.

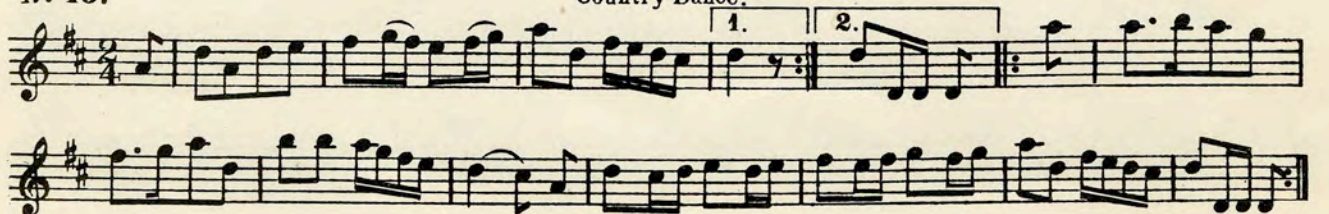
Country Dance.



THE BRITISH GRENADIERS.

N^o 45.

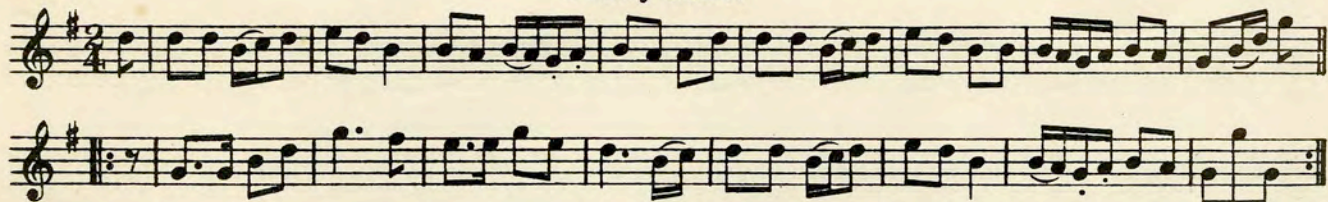
Country Dance.



CAMPTOWN RACES.

N^o 46.

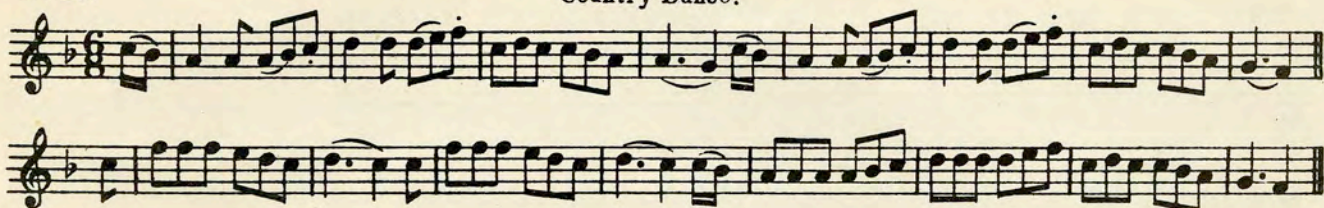
Country Dance.



THE TIGHT LITTLE ISLAND.

N^o 47.

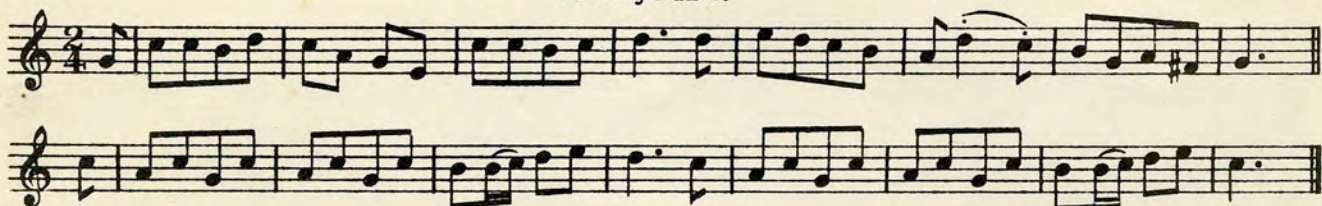
Country Dance.



TIPPITYWICHET.

N^o 48.

Country Dance.



THE FAIRY DANCE.

N^o 49.

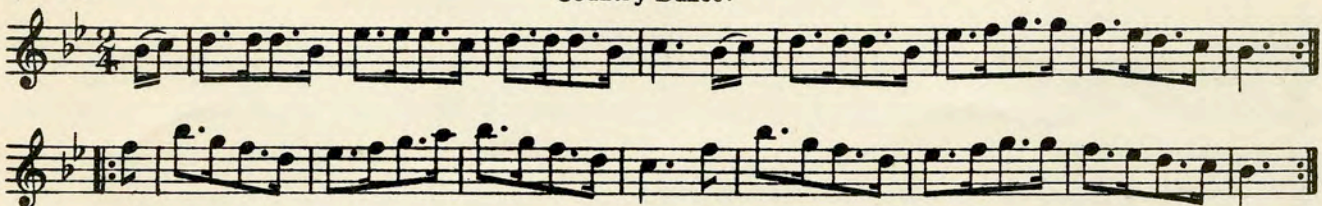
Country Dance.



THERE'S NAE LUCK ABOUT THE HOUSE.

N^o 50.

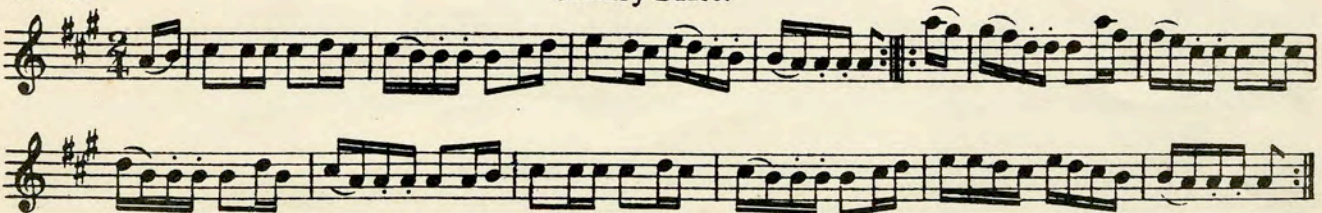
Country Dance.



THE CAPTAIN WITH HIS WHISKERS.

N^o 51.

Country Dance.



LOVERS' QUARRELS.

N^o 52.

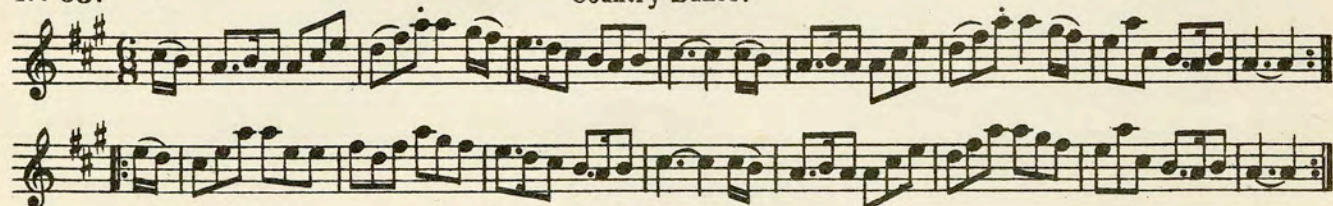
Country Dance.



BELIEVE ME IF ALL THOSE ENDEARING YOUNG CHARMS.

N^o 53.

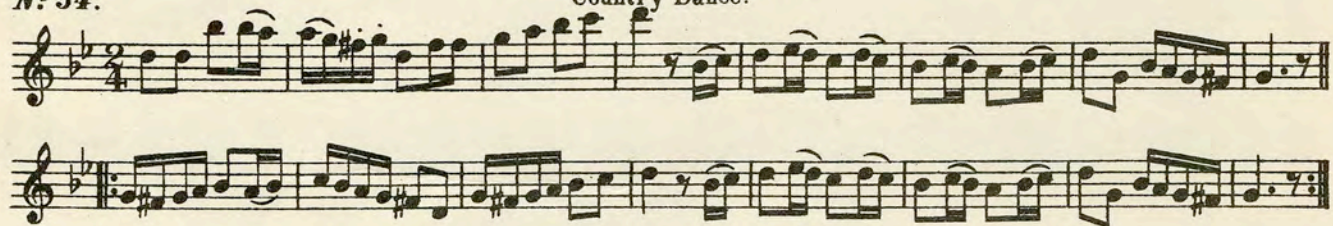
Country Dance.



OLD KING COLE.

N^o 54.

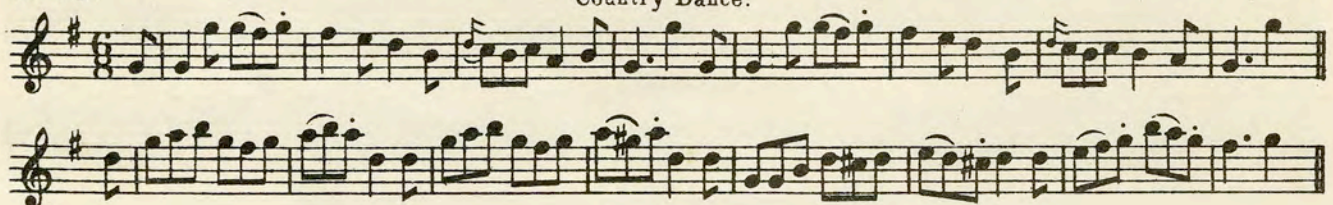
Country Dance.



ON A MAY DAY MORNING EARLY.

N^o 55.

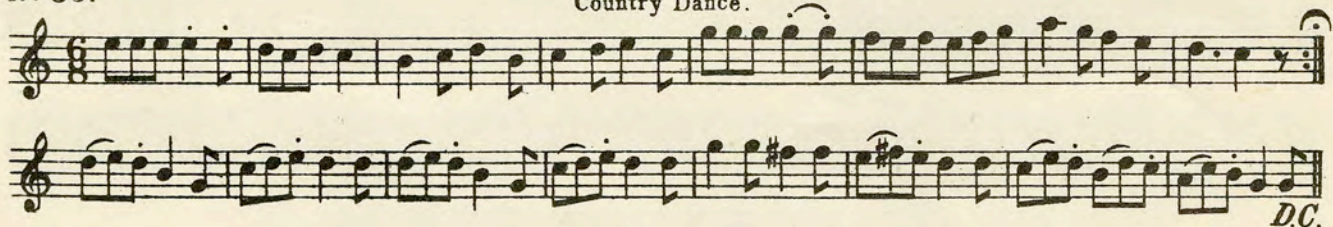
Country Dance.



VOULEZ VOUS DANSER.

N^o 56.

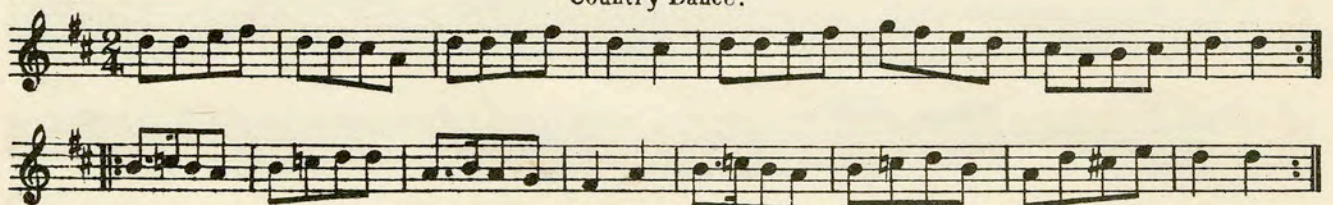
Country Dance.



YANKEY DOODLE.

N^o 57.

Country Dance.



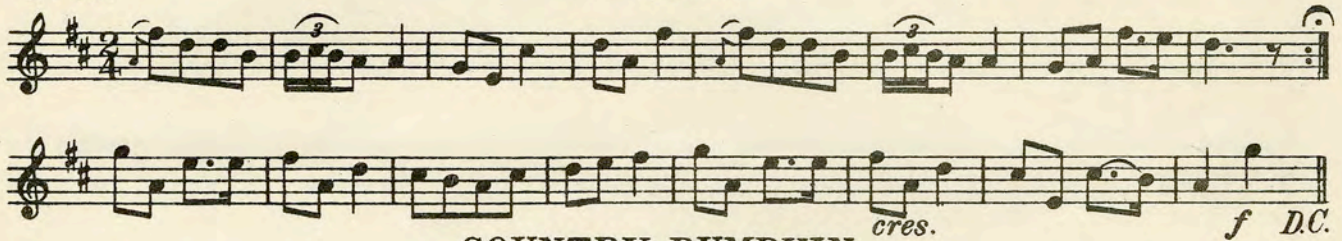
OLD AUNT SALLY.

Country Dance.

N^o 58.

LULU IS OUR DARLING PRIDE.

Country Dance.

N^o 59.

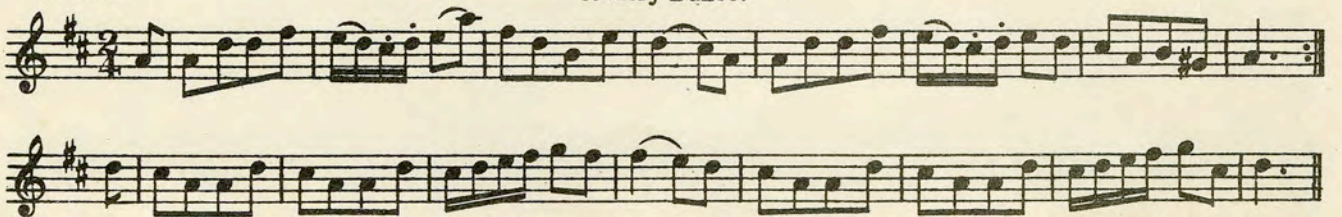
COUNTRY BUMPKIN.

Country Dance.

N^o 60.

LASS OF RICHMOND HILL.

Country Dance.

N^o 61.

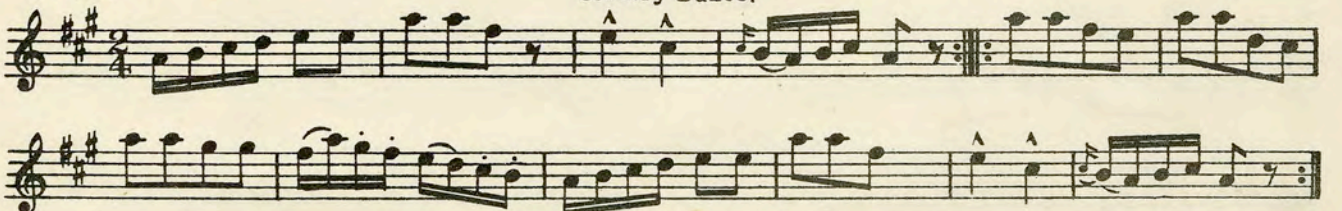
WE'RE A' NODDIN'.

Country Dance.

N^o 62.

THE MAY-POLE.

Country Dance.

N^o 63.

M^o GREGOR'S MARCH.

N^o 64.

Country Dance.



BOBBIN' AROUND.

N^o 65.

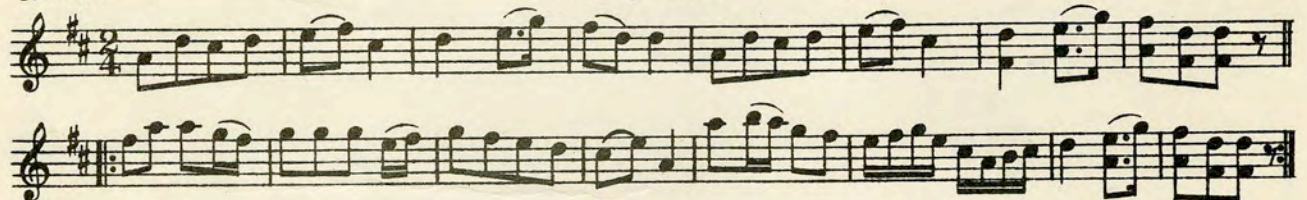
Country Dance.



DUNCAN GRAY.

N^o 66.

Country Dance.



BRONZE HORSE.

N^o 67.

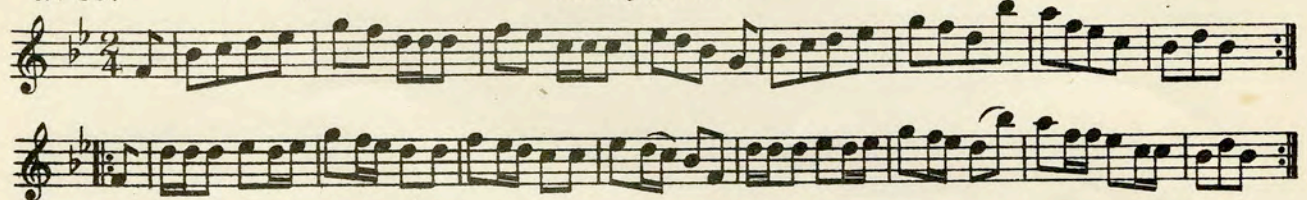
Country Dance.



BUFFALO GALS.

N^o 68.

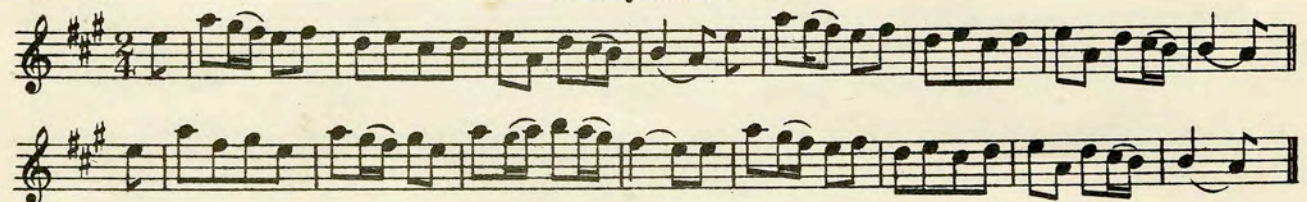
Country Dance.



THE VICAR OF BRAY.

N^o 69.

Country Dance.



FLY NOT YET.

Country Dance.

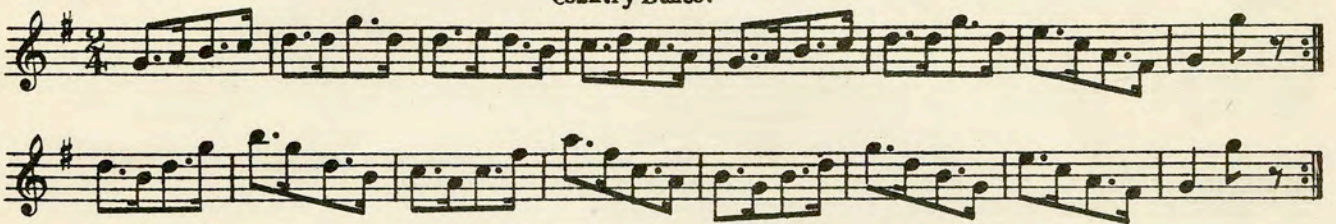
N^o 70.



THE COUNTRY FAIR.

Country Dance.

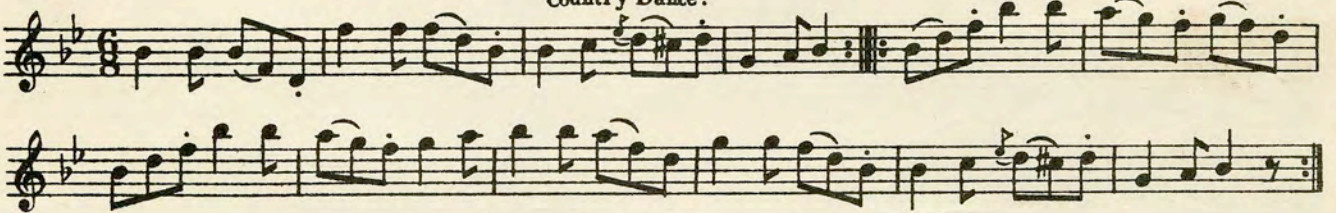
N^o 71.



THE LEGACY.

Country Dance.

N^o 72.



MY LOVE SHE'S BUT A LASSIE YET.

Country Dance

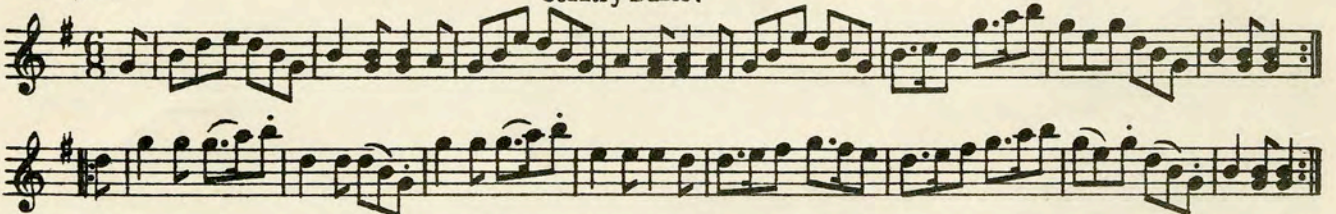
N^o 73.



THE CAMPBELLS ARE COMIN'.

Country Dance.

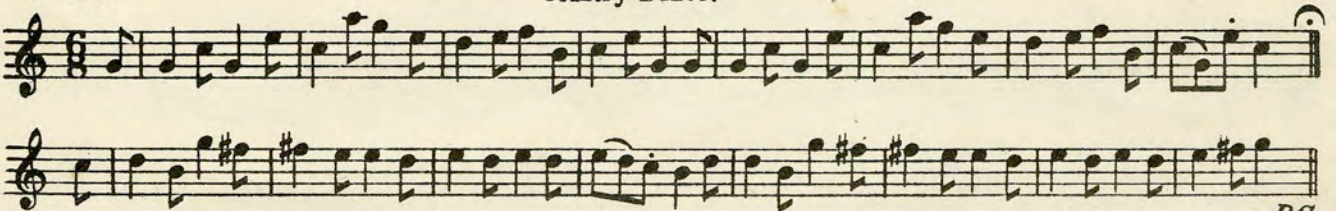
N^o 74.



MY LORD TOMNODDY.

Country Dance.

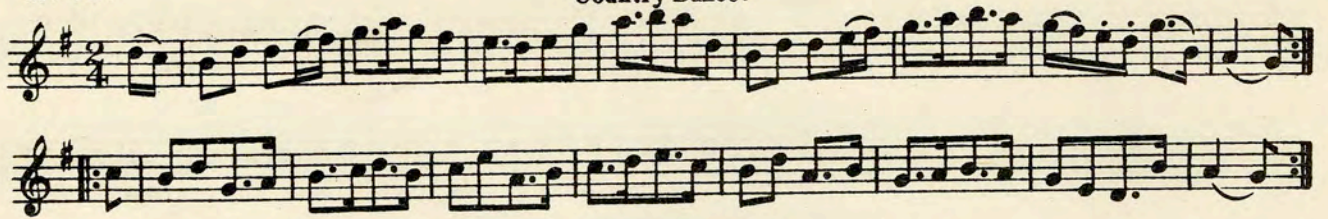
N^o 75.



LASS O' GOWRIE.

N^o 76.

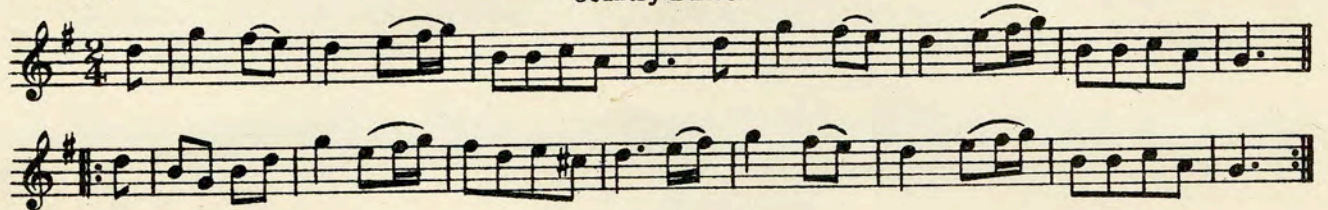
Country Dance.



BLUE BELLS OF SCOTLAND.

N^o 77.

Country Dance.



AULD LANG SYNE.

N^o 78.

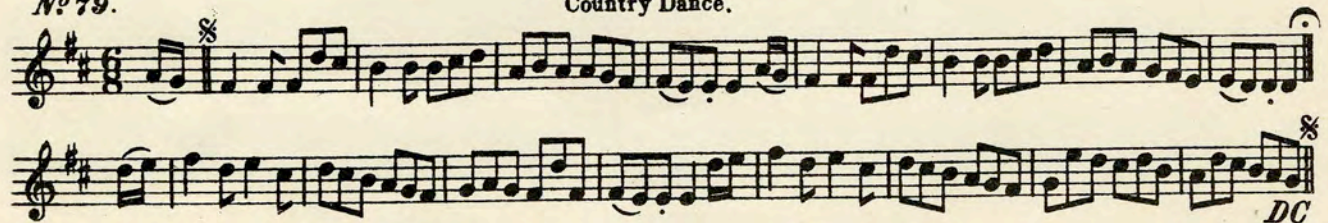
Country Dance.



AP SHENKIN.

N^o 79.

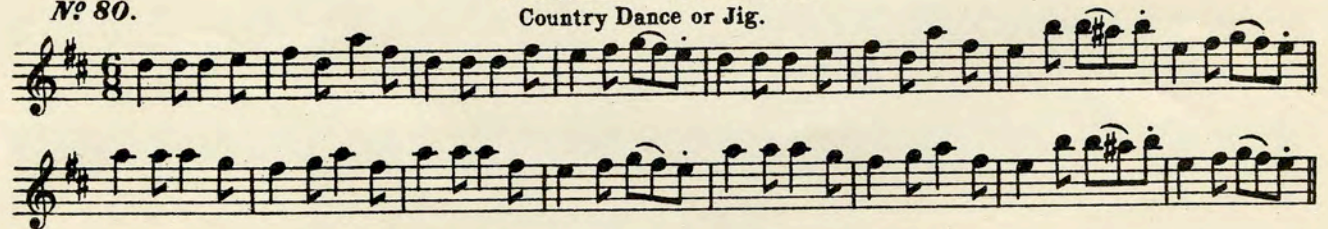
Country Dance.



NORAH CREINA.

N^o 80.

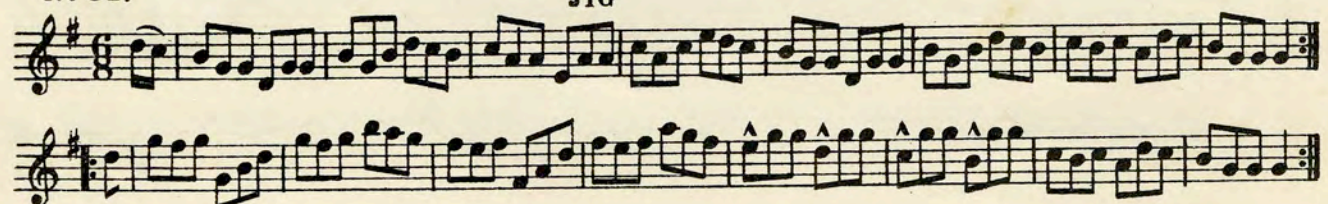
Country Dance or Jig.



THE IRISH WASHERWOMAN.

N^o 81.

JIG



FAR, FAR UPON THE SEA.

Country Dance.

Nº 82.

Musical notation for 'Far, Far Upon the Sea' in 2/4 time, key of D major. It consists of three staves of music. The first staff begins with a treble clef and a key signature of one sharp (F#). The second staff includes the instruction 'cres.' at the end. The third staff includes the instruction 'f' at the beginning and 'DC.' at the end.

PADDY O'RAFFERTY.

JIG.

Nº 83.

Musical notation for 'Paddy O'Rafferty' in 6/8 time, key of B-flat major. It consists of three staves of music. The first staff begins with a treble clef and a key signature of two flats (B-flat and E-flat).

HOW HAPPY THE SOLDIER WHO LIVES ON HIS PAY.

JIG.

Nº 84.

Musical notation for 'How Happy the Soldier who lives on his Pay' in 6/8 time, key of D major. It consists of three staves of music. The first staff begins with a treble clef and a key signature of one sharp (F#).

ST. PATRICK'S DAY.

JIG.

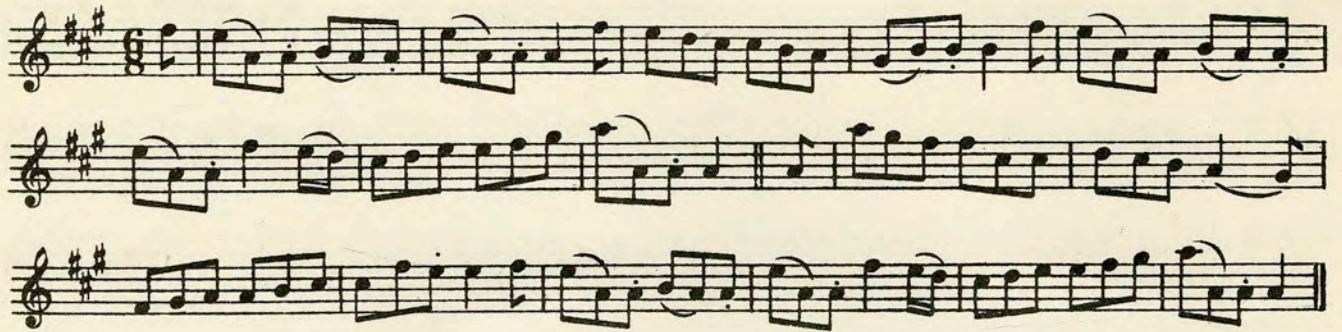
Nº 85.

Musical notation for 'St. Patrick's Day' in 6/8 time, key of D major. It consists of three staves of music. The first staff begins with a treble clef and a key signature of two sharps (F# and C#).

RORY O'MORE.

N^o 86.

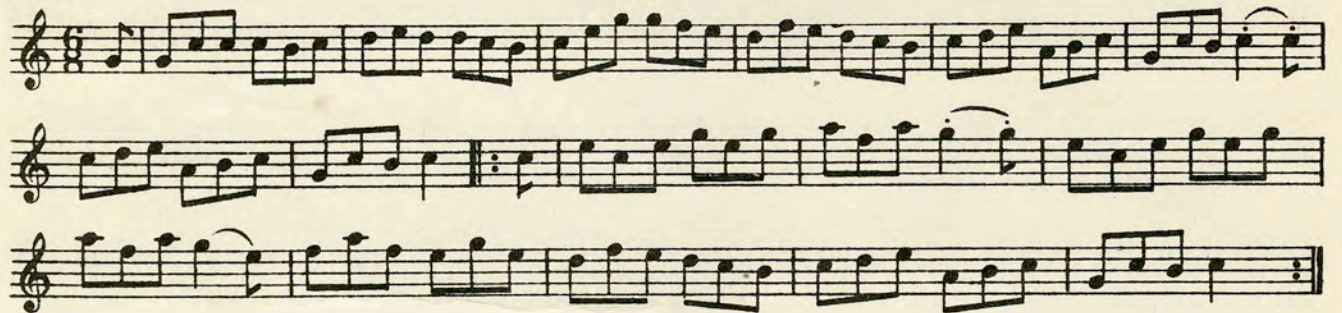
JIG.



THE SPRIG OF SHILLELA.

N^o 87.

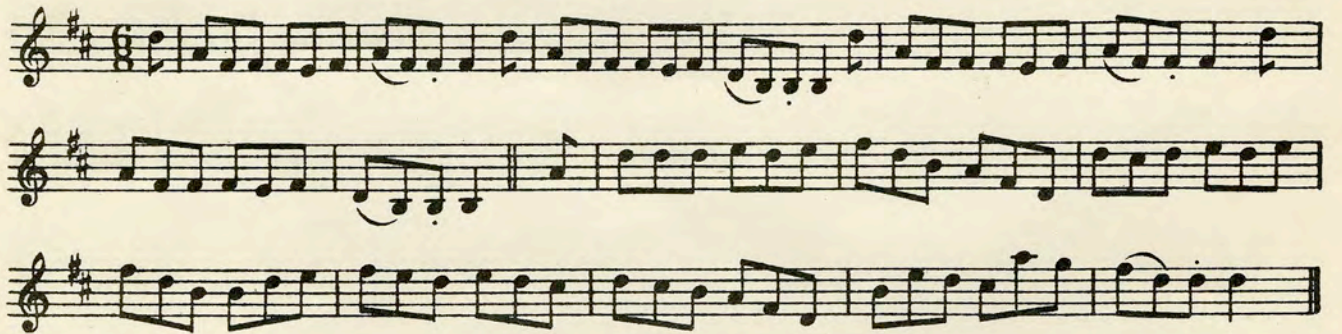
JIG.



THIS LIFE IS ALL CHEQUERED.

N^o 88.

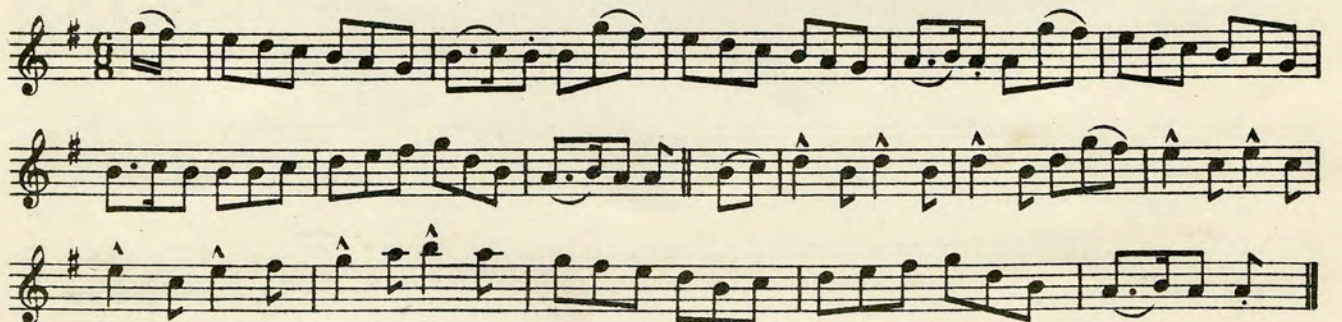
JIG.



GARRY OWEN.

N^o 89.

JIG.



PADDY WHACK.

JIG.

N^o 90.

MONEY IN BOTH POCKETS.

JIG.

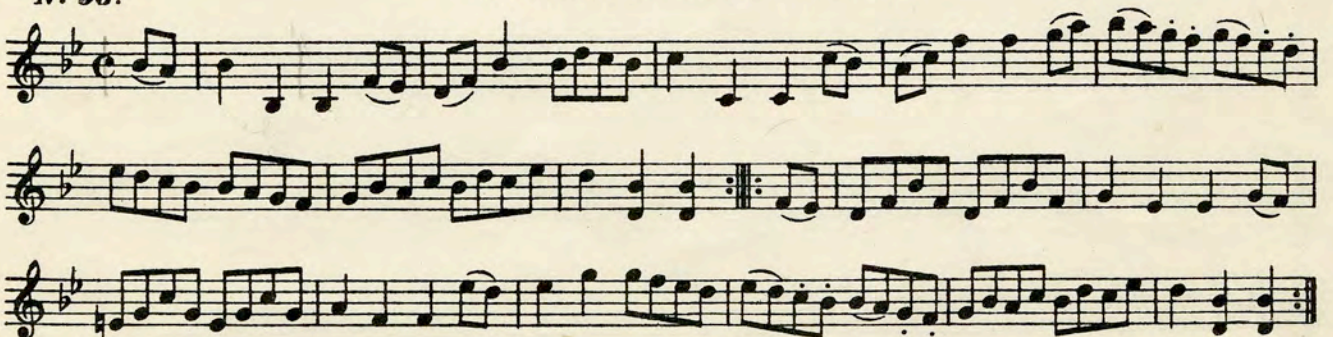
N^o 91.

PADDY O' CARROLL.

JIG.

N^o 92.

COLLEGE HORNPIPE.

N^o 93.

FISHER'S HORNPIPE.

N^o 94.

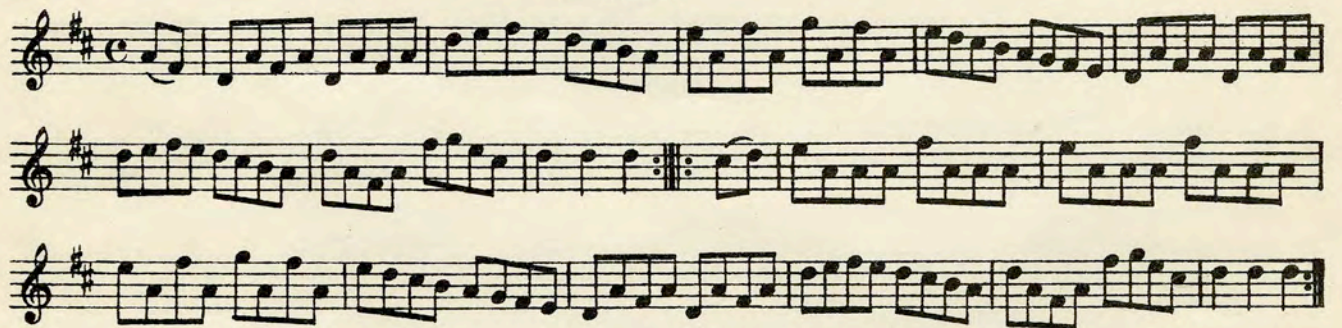
THE BRIDGE OF LODI.

HORNPIPE.

N^o 95.

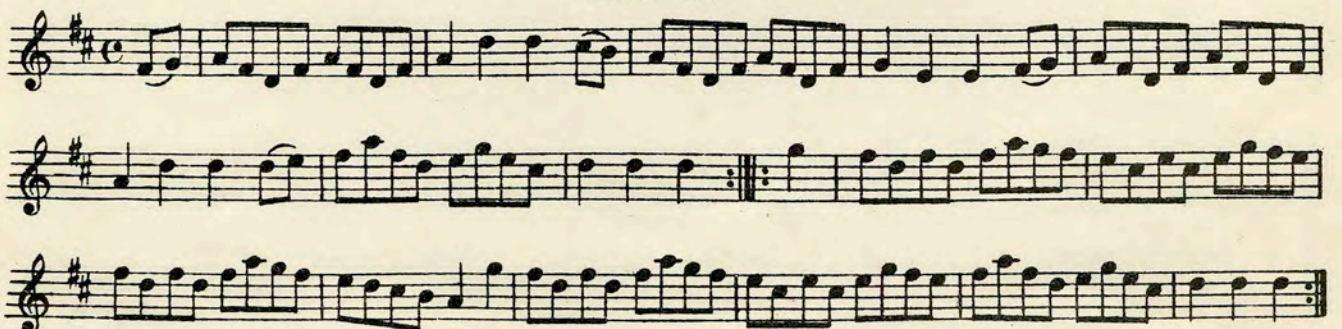
HARVEST HOME.

HORNPIPE.

N^o 96.

THE SOLDIER'S JOY.

HORNPIPE.

N^o 97.

N^o 98

THE DE'IL AMONG THE TAILORS.

Country Dance or Reel.

Musical notation for 'THE DE'IL AMONG THE TAILORS.' consisting of three staves of music in treble clef, key of D major (two sharps), and common time. The melody is characterized by eighth and sixteenth notes, with a repeat sign at the end of the second staff.

N^o 99

SPEED THE PLOUGH.

REEL.

Musical notation for 'SPEED THE PLOUGH.' consisting of three staves of music in treble clef, key of D major (two sharps), and common time. The melody features eighth and sixteenth notes with various rhythmic patterns and a repeat sign at the end of the second staff.

N^o 100

CUTTY SARK.

REEL.

Musical notation for 'CUTTY SARK.' consisting of three staves of music in treble clef, key of D major (two sharps), and common time. The notation includes a repeat sign with a double bar line and a star symbol at the beginning of the first staff, and trills (tr) marked above several notes in the second and third staves. The piece concludes with 'D.C. %' at the bottom right.

N^o 101

TULLOCHGORUM.

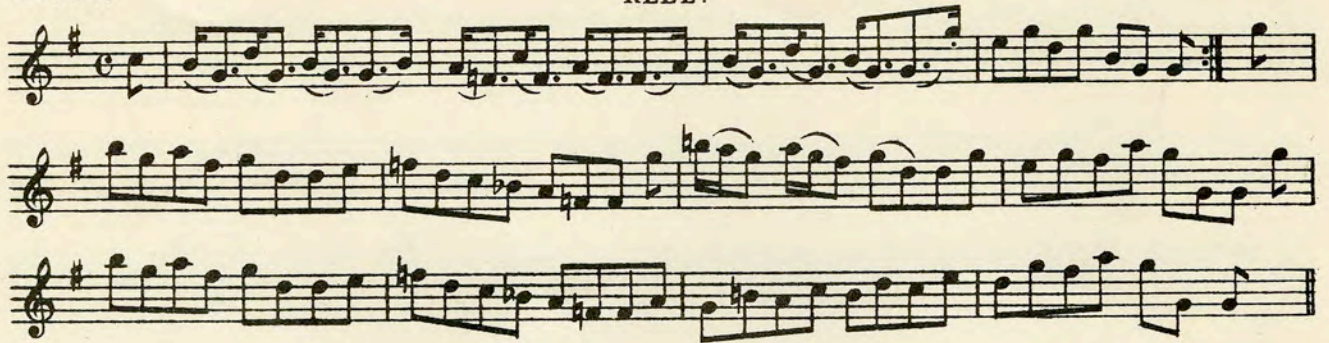
The Celebrated Highland Fling. Reel.

Musical notation for 'TULLOCHGORUM.' consisting of three staves of music in treble clef, key of D major (two sharps), and common time. The notation includes a repeat sign with a double bar line and a star symbol at the beginning of the first staff, and a flat (b) marked below a note in the third staff. The piece concludes with 'D.C.' at the bottom right.

JOHNNY'S MADE A WEDDING O'IT.

N^o 102.

REEL.



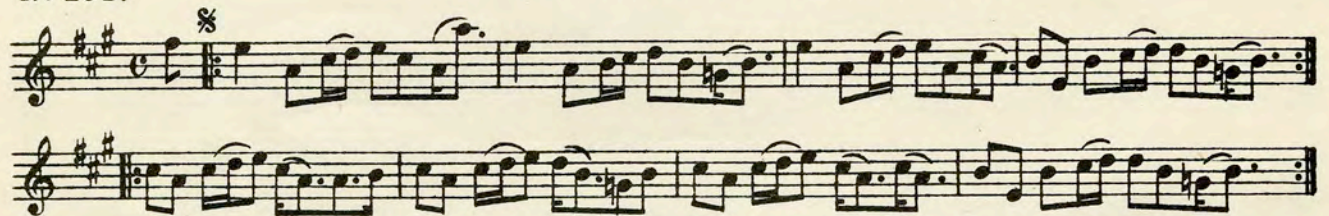
JOHN CHEAP THE CHOPMAN.

N^o 103.

REEL.



REEL O' THULICHAN, OR TULLOCH.

N^o 104.

GREEN GROW THE RUSHES, O!

N^o 105.

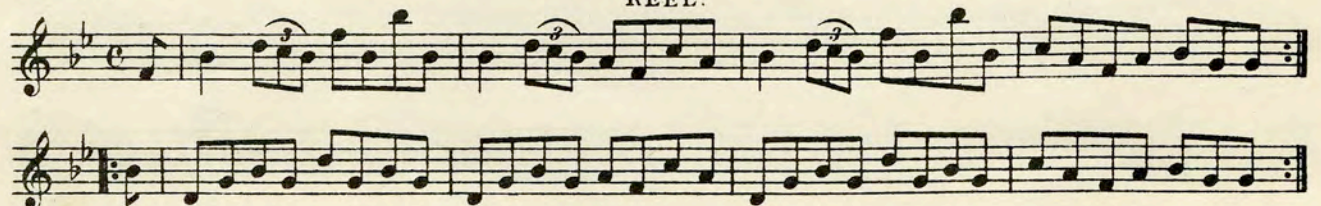
REEL.



CAPTAIN KEELER.

N^o 106.

REEL.





SIR DAVID HUNTER BLAIR

REEL

N^o 107.

THE MARQUIS OF HUNTLEY'S HIGHLAND FLING.

STRATHSPEY.

N^o 108.

LADY BAIRD.

STRATHSPEY.

N^o 109.

THE SILVER LAKE.

SPANISH WALTZ.

N^o 110

THE SPANISH FANDANGO.

SPANISH WALTZ.

N^o 111.

THE GUARACHA WALTZ.

SPANISH WALTZ.

Nº 112.

Musical score for 'THE GUARACHA WALTZ' in G major, 3/4 time. It consists of two staves of music. The first staff begins with a treble clef, a key signature of one sharp (F#), and a 3/4 time signature. The melody is characterized by eighth-note patterns with accents. The second staff continues the melody and ends with a double bar line and the marking 'D.C.' (Da Capo).

LA GITANA.

May be used to Spanish Waltz.

Nº 113.

Musical score for 'LA GITANA' in G major, 3/8 time. It consists of four staves of music. The first staff begins with a treble clef, a key signature of one sharp (F#), and a 3/8 time signature. It starts with a section marked with a double bar line and a section symbol (§), followed by a piano (*p*) dynamic. The second staff continues the melody. The third staff is marked *mf* (mezzo-forte). The fourth staff concludes the piece with a section symbol (§), a piano (*p*) dynamic, and a 'D.C.' (Da Capo) marking.

SPANISH DANCE.

Nº 114.

Musical score for 'SPANISH DANCE' in G major, 3/8 time. It consists of six staves of music. The first staff begins with a treble clef, a key signature of one sharp (F#), and a 3/8 time signature. The melody features eighth-note patterns with accents. The second staff continues the melody. The third staff is marked *mf* (mezzo-forte). The fourth and fifth staves continue the rhythmic pattern. The sixth staff concludes with a section marked *f marcato* (forte marcato) and ends with a 'D.C.' (Da Capo) marking.

N^o 115. THE FAVORITE DANCE OF THE COTILLION.

Tempo di Valse

N^o 116.

GAVOTTE DE VESTRIS.

Moderato

N^o 117.

THE CRACOVienne.

CHRISTMAS COMES BUT ONCE A YEAR.

Nº 118.

Old English Dance.

Musical score for 'CHRISTMAS COMES BUT ONCE A YEAR.' consisting of three staves of music in 6/8 time, key of B-flat major. The first staff begins with a treble clef and a key signature of two flats. The music features a mix of eighth and sixteenth notes with some rests.

Nº 119.

THE CACHOUCHA.

May be used to Spanish Waltz

Musical score for 'THE CACHOUCHA.' consisting of four staves of music in 3/8 time, key of B-flat major. The first staff begins with a treble clef and a key signature of two flats. The music is characterized by a waltz-like feel with many eighth notes and some triplets.

Nº 120.

Andante pomposo

LE MINUET DE LA COUR.

Musical score for 'LE MINUET DE LA COUR.' consisting of five staves of music in 3/4 time, key of D major. The first staff begins with a treble clef and a key signature of two sharps. The music is a minuet with a variety of dynamics including *p*, *f*, *mf*, *ff*, and *p*. It includes performance markings such as *cres*, *cen*, *do*, and *DC.*