

T. WESTROP'S
120 COUNTRY DANCES, JIGS, REELS, HORNPIPES, &c.
for the VIOLIN.

SIR ROGER DE COVERLEY.

N^o 1.

Country Dance.

DROPS OF BRANDY.

N^o 2.

Country Dance.

BARNEY BRALLAGHAN.

N^o 3.

Country Dance.

THE GRINDERS.

N^o 4.

Country Dance.

No 5.

IRISH MERRY MAKING.

Country Dance.



No 6.

THE TRIUMPH.

Country Dance.



No 7.

THE WHITE COCKADE.

Country Dance.



No 8.

HASTE TO THE WEDDING.

Country Dance.



No 9.

OFF SHE GOES.

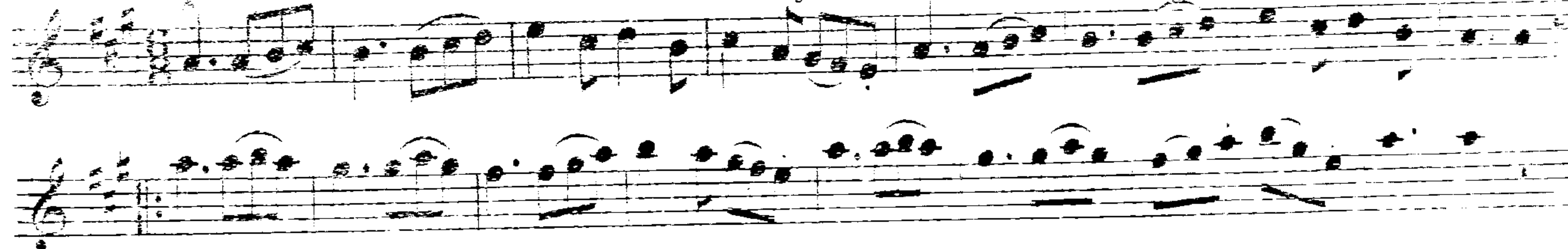
Country Dance.



No 10.

JACK'S ALIVE.

Country Dance.



ZIP COON, or PAINY LINT CARE.

No. 11.

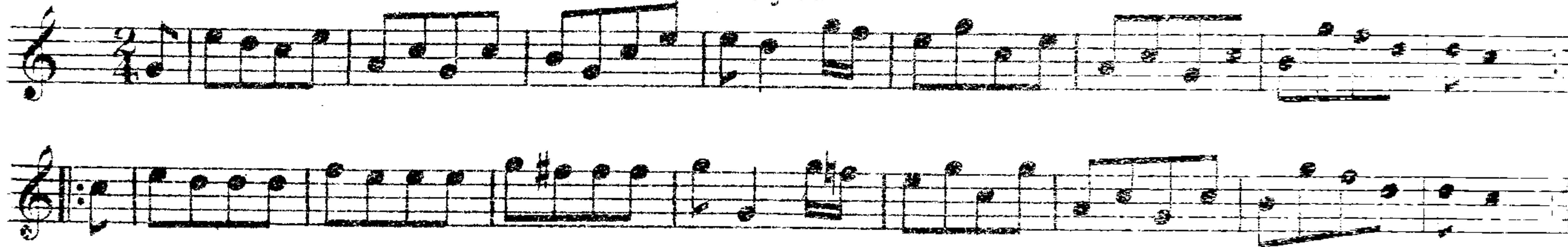
Country Dance.



THE RATCATCHER'S DAUGHTER.

No. 12.

Country Dance.



THE PLOUGH BOY.

No. 13.

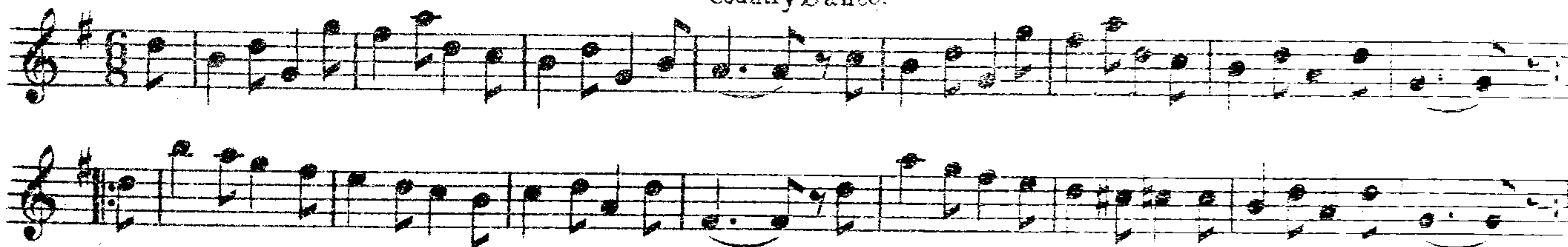
Country Dance.



THE PERFECT CURE.

No. 14.

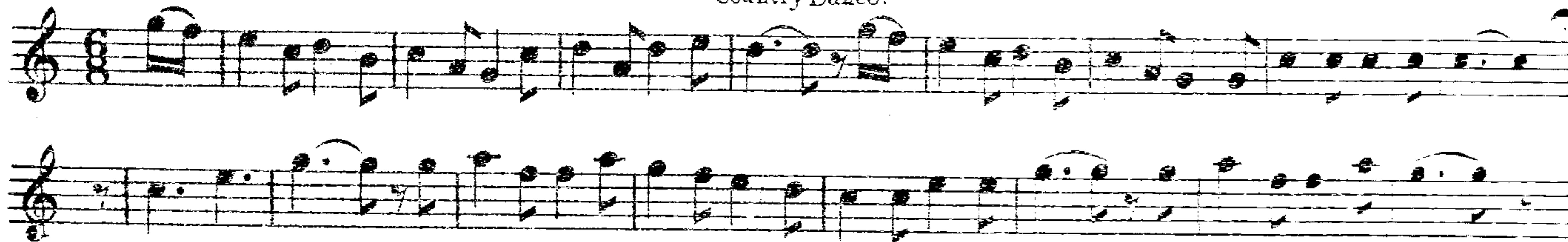
Country Dance.



THE WHOLE HOG OR NONE.

No. 15.

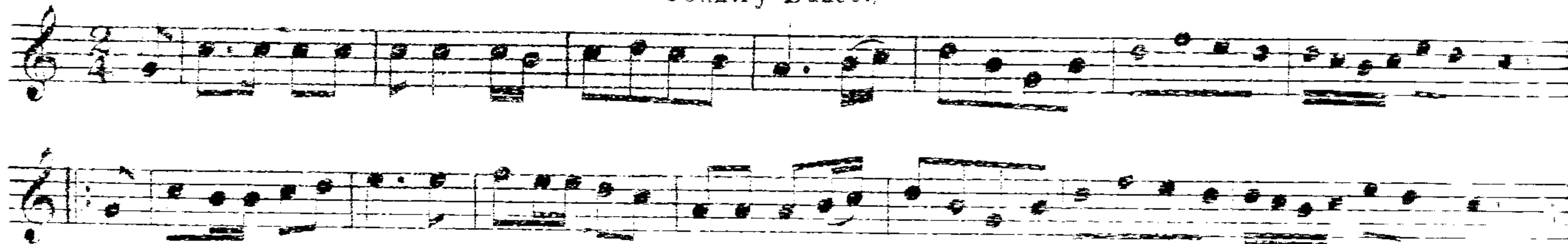
Country Dance.



LUCY NEAL.

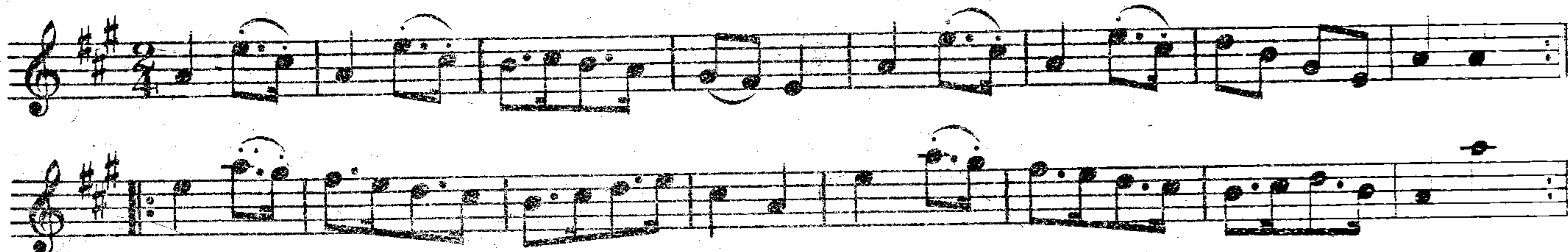
No. 16.

Country Dance.



TINK A TINK. Country Dance.

Nº 17.



THE YELLOW ROSE OF TEXAS. Country Dance.

Nº 18.



THE EXHIBITION OF 1862. Country Dance.

Nº 19.



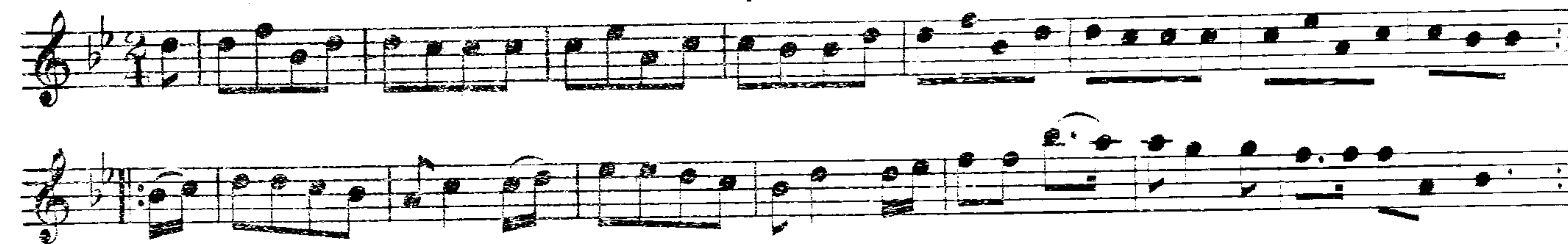
CHEER UP, SAM. Country Dance.

Nº 20.



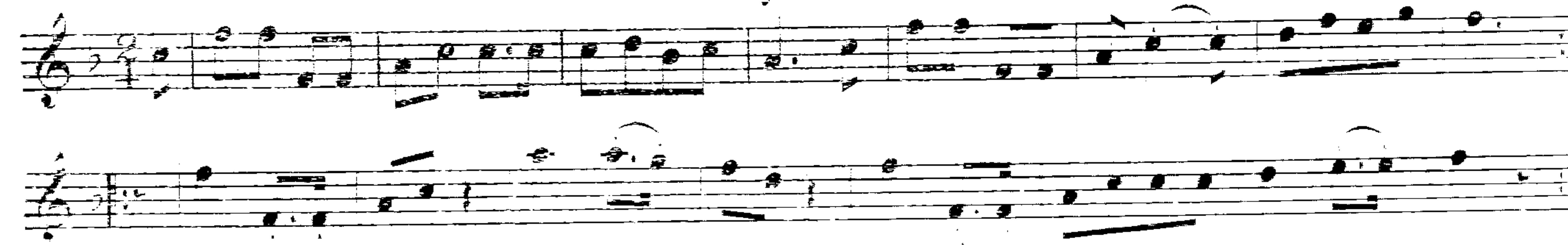
SO EARLY IN THE MORNING. Country Dance.

Nº 21.



WAIT FOR THE WAGGON. Country Dance.

Nº 22.



KISS ME QUICK AND GO. Country Dance.

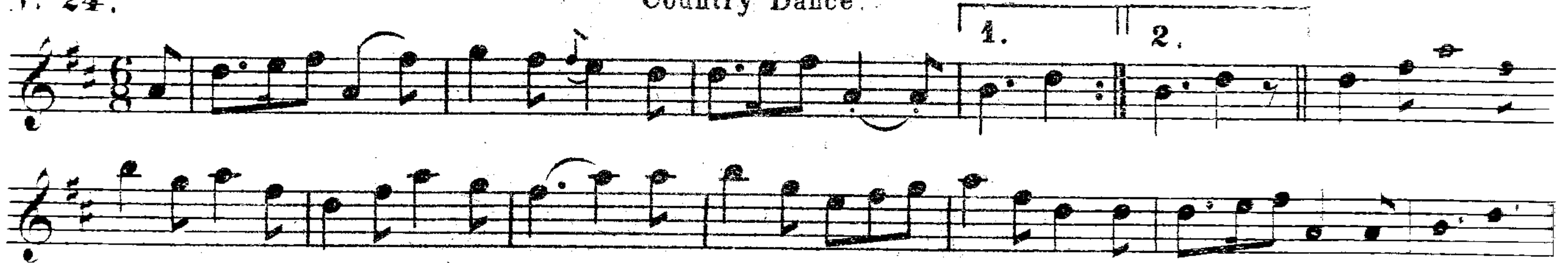
No 23.



THE QUAKER'S WIFE.

Country Dance.

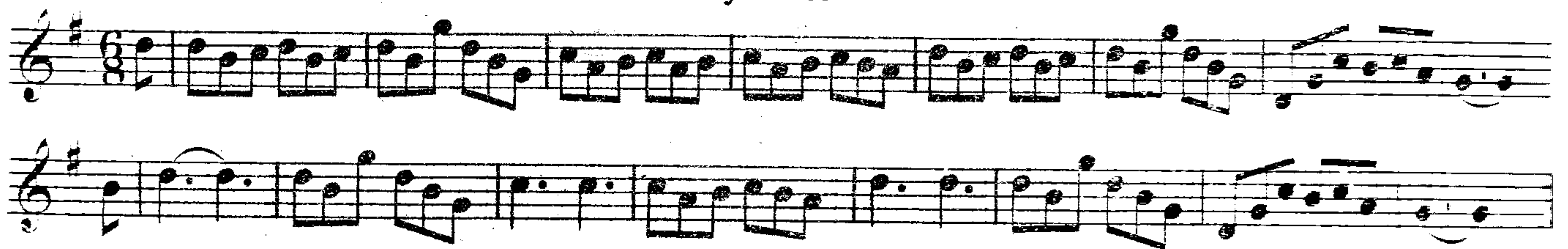
No 24.



WHAT CAN THE MATTER BE ?

Country Dance.

No 25.



THE IRISH WEDDING.

Country Dance.

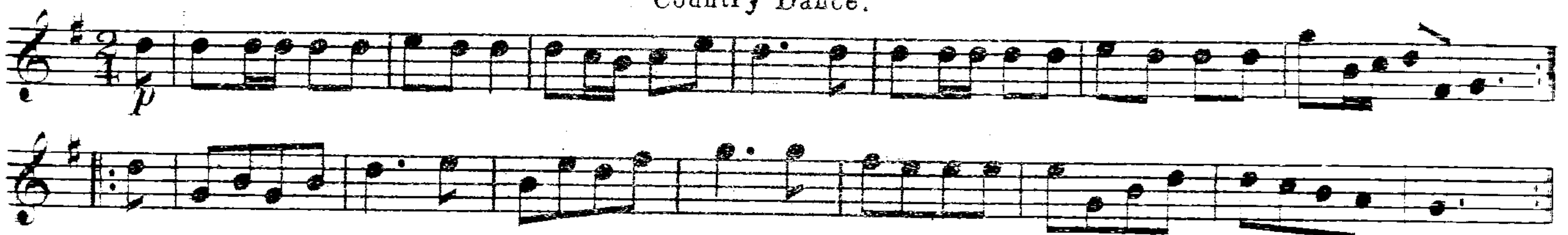
No 26.



WHILE I MY BANJO PLAY.

Country Dance.

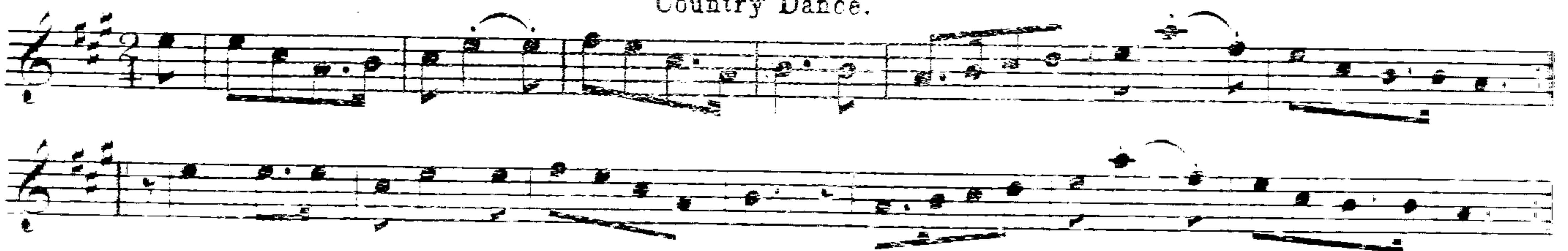
No 27.



RING, RING THE BANJO.

Country Dance.

No 28.



PULL AWAY CHEERILY.

Country Dance.

Nº 29.

Two staves of musical notation for the piece 'PULL AWAY CHEERILY.' The first staff begins with a treble clef, a key signature of one sharp (F#), and a 2/4 time signature. The melody is written in a single line. The second staff continues the melody, ending with a double bar line and the initials 'DC'.

IF THE HEART OF A MAN.

Country Dance.

Nº 30.

Two staves of musical notation for the piece 'IF THE HEART OF A MAN.' The first staff begins with a treble clef, a key signature of two sharps (F# and C#), and a 2/4 time signature. The melody is written in a single line. The second staff continues the melody, ending with a double bar line.

DIXEY'S LAND.

Country Dance.

Nº 31.

Two staves of musical notation for the piece 'DIXEY'S LAND.' The first staff begins with a treble clef, a key signature of two sharps (F# and C#), and a 2/4 time signature. The melody is written in a single line. The second staff continues the melody, ending with a double bar line.

THE HONEY-MOON.

Country Dance.

Nº 32.

Two staves of musical notation for the piece 'THE HONEY-MOON.' The first staff begins with a treble clef, a key signature of two sharps (F# and C#), and a 2/4 time signature. The melody is written in a single line. The second staff continues the melody, ending with a double bar line.

THE TANK.

Country Dance.

Nº 33.

Two staves of musical notation for the piece 'THE TANK.' The first staff begins with a treble clef, a key signature of two sharps (F# and C#), and a 2/4 time signature. The melody is written in a single line. The second staff continues the melody, ending with a double bar line. A dynamic marking 'mf' is present in the second staff.

KINLOCH OF KINLOCH.

Country Dance.

Nº 34.

Two staves of musical notation for the piece 'KINLOCH OF KINLOCH.' The first staff begins with a treble clef, a key signature of one sharp (F#), and a 2/4 time signature. The melody is written in a single line. The second staff continues the melody, ending with a double bar line.

OH, KISS, BUT NEVER TELL.

Country Dance.

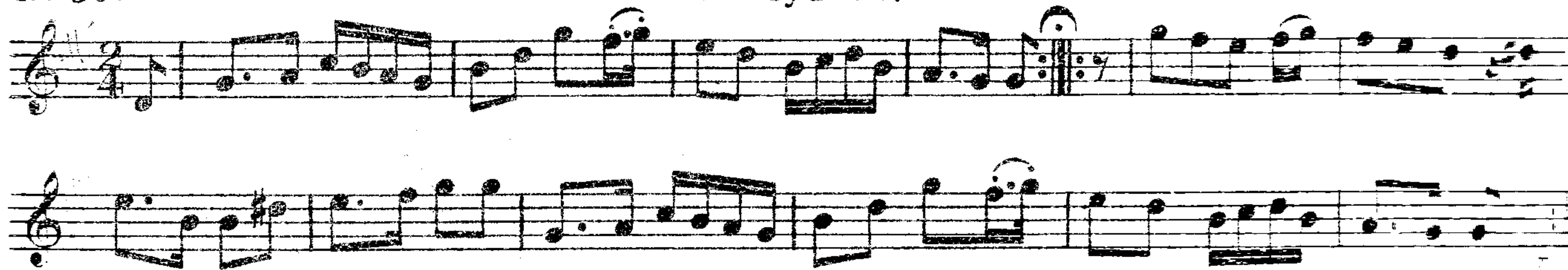
N^o 35.



THE MINSTREL BOY.

Country Dance.

N^o 36.



from "ROBERT LE DIABLE."

Country Dance.

N^o 37.



THE ROSE TREE.

Country Dance.

N^o 38.



WE WON'T GO HOME TILL MORNING.

Country Dance.

N^o 39.



MICHAEL WIGGINS.

Nº 40.

Country Dance.

THE DARK GIRL DRESSED IN BLUE.

Nº 41.

Country Dance.

THE GIRL I LEFT BEHIND ME.

Nº 42.

Country Dance.

HOOP DE DOODEN DO!

Nº 43.

Country Dance.

POP GOES THE WEASEL.

Nº 44.

Country Dance.

THE BRITISH GRENADIERS.

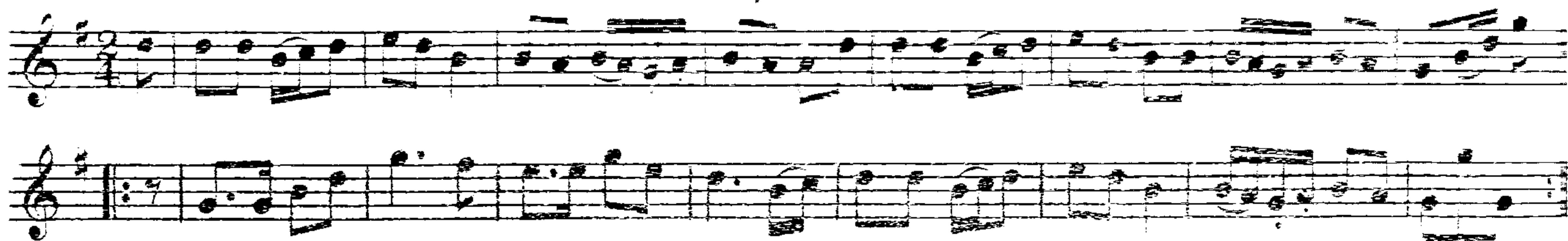
Nº 45.

Country Dance.

CAMPTOWN RACES.

Nº 46.

Country Dance.



THE TIGHT LITTLE ISLAND.

Nº 47.

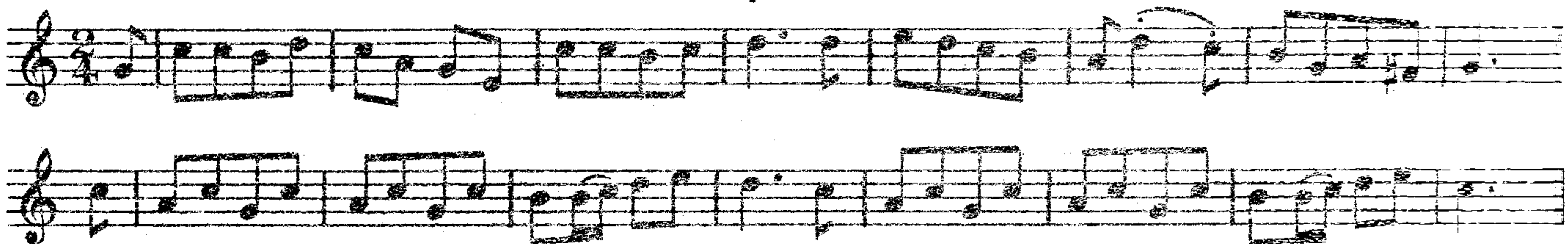
Country Dance.



TIPPITY WICHET.

Nº 48.

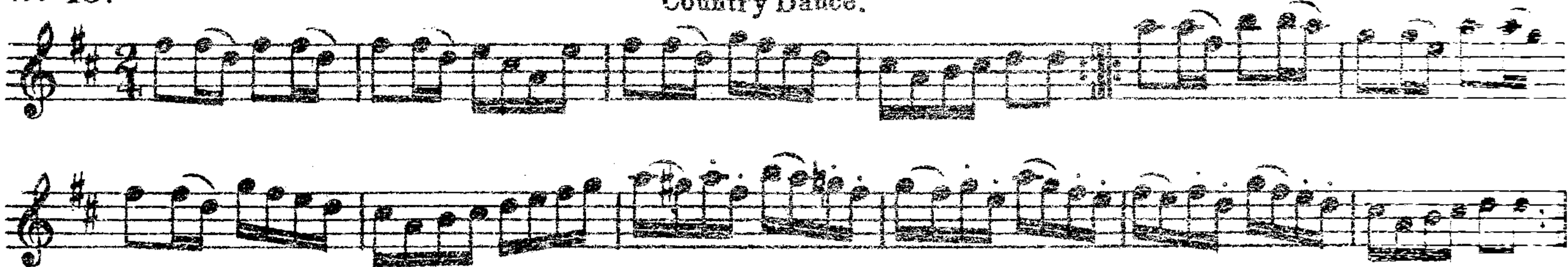
Country Dance.



THE FAIRY DANCE.

Nº 49.

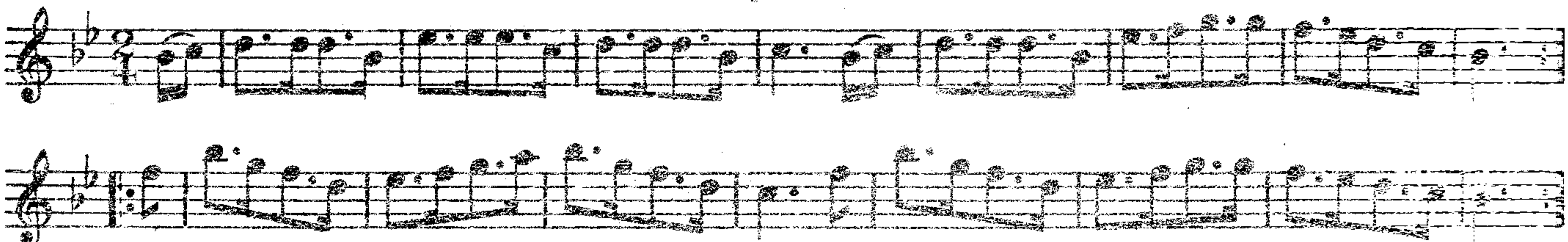
Country Dance.



THERE'S NAE LUCK ABOUT THE HOUSE.

Nº 50.

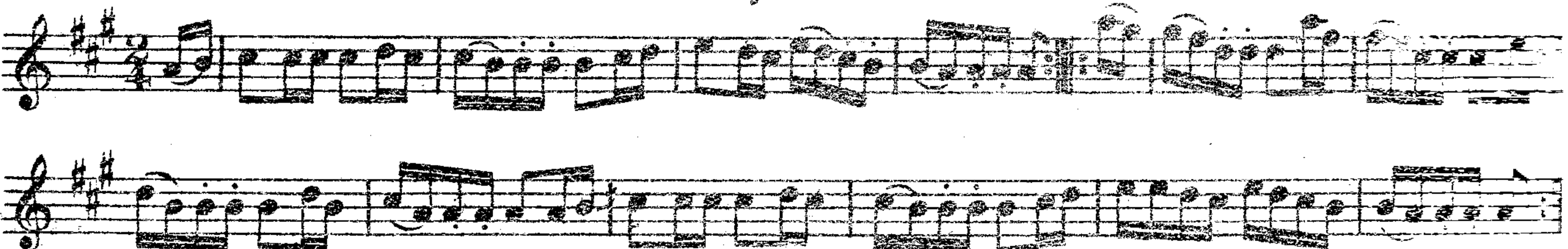
Country Dance.



THE CAPTAIN WITH HIS WHISKERS.

Nº 51.

Country Dance.



LOVERS' QUARRELS.

Country Dance

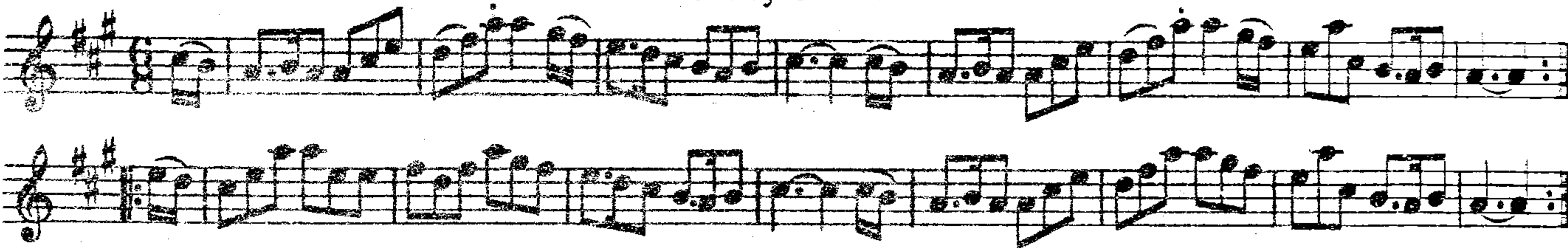
N^o 52.



BELIEVE ME IF ALL THOSE ENDEARING YOUNG CHARMS.

Country Dance.

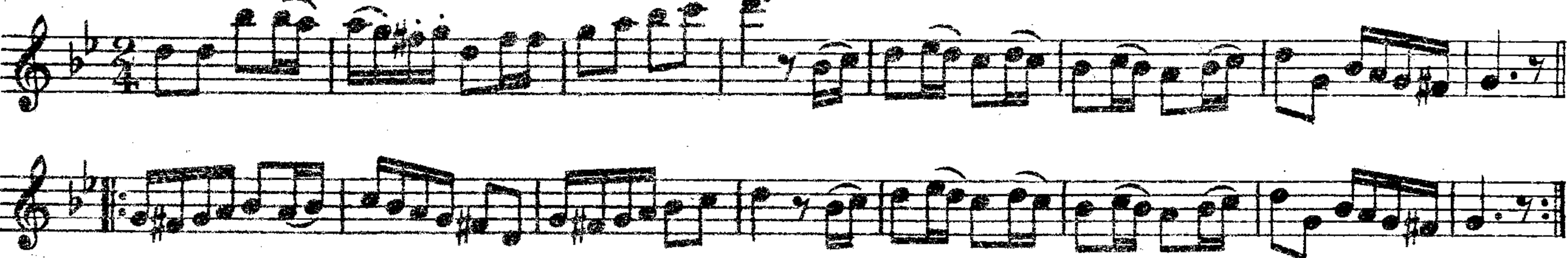
N^o 53.



OLD KING COLE.

Country Dance.

N^o 54.



ON A MAY DAY MORNING EARLY.

Country Dance.

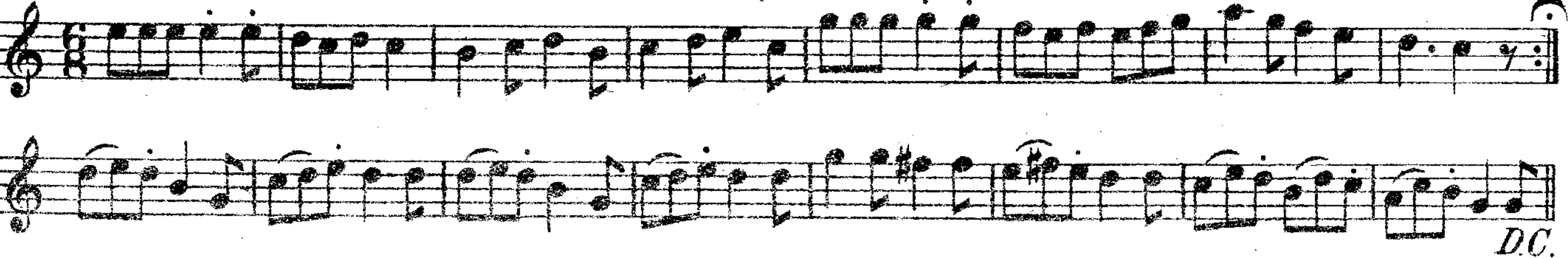
N^o 55.



VOULEZ VOUS DANSER.

Country Dance.

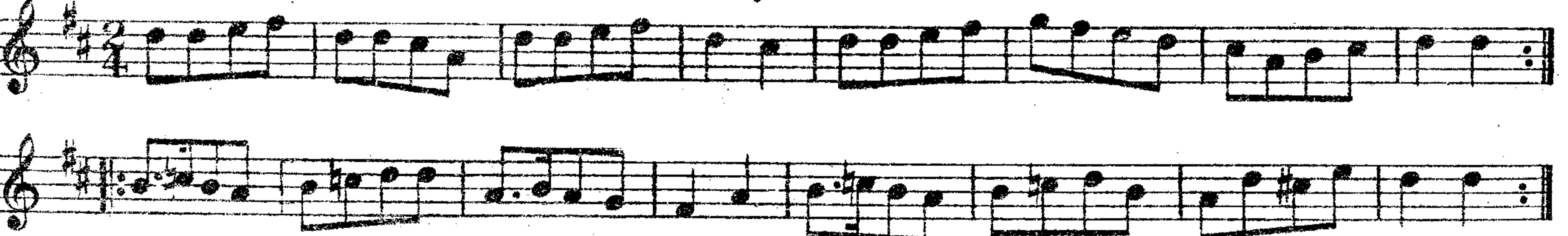
N^o 56.



YANKEY DOODLE.

Country Dance.

N^o 57.



OLD AUNT SALLY.

Country Dance.

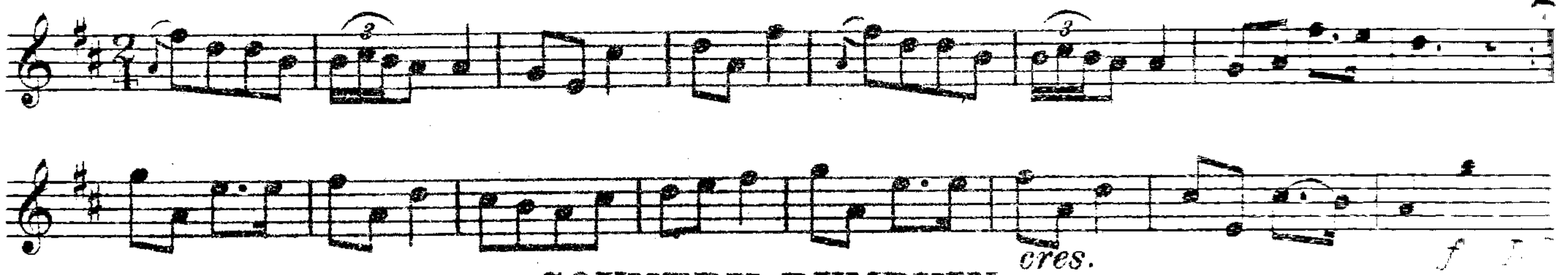
Nº 58.



LULU IS OUR DARLING PRIDE.

Country Dance.

Nº 59.



COUNTRY BUMPKIN.

Country Dance.

Nº 60.



LASS OF RICHMOND HILL.

Country Dance.

Nº 61.



WE'RE A' NODDIN'.

Country Dance.

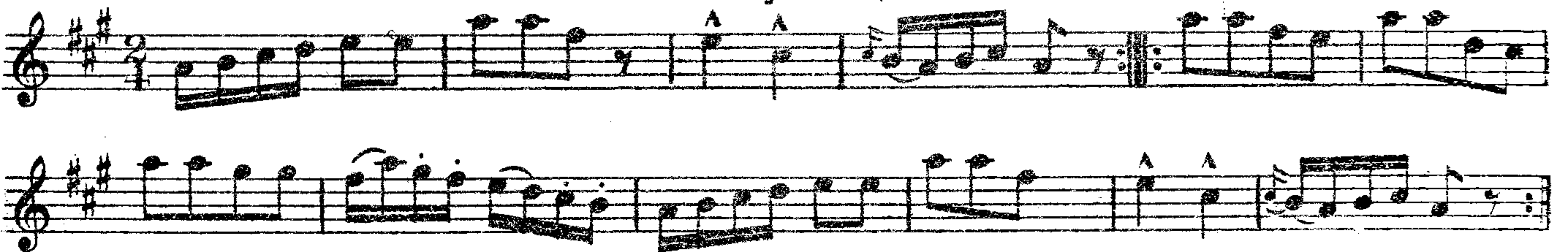
Nº 62.



THE MAY-POLE.

Country Dance.

Nº 63.



MR GREGOR'S MARCH.

Nº 64.

Country Dance.



BOBBIN' AROUND.

Nº 65.

Country Dance.



DUNCAN GRAY.

Nº 66.

Country Dance.



BRONZE HORSE.

Nº 67.

Country Dance.



BUFFALO GALS.

Nº 68.

Country Dance.



THE VICAR OF BRAY.

Nº 69.

Country Dance.



FLY NOT YET.

Country Dance

Nº 70.

Musical notation for 'FLY NOT YET.' consisting of two staves. The first staff is the melody in treble clef, 6/8 time, with a key signature of one sharp (F#). The second staff is the accompaniment in treble clef, 6/8 time, with a key signature of one sharp (F#).

THE COUNTRY FAIR.

Country Dance.

Nº 71.

Musical notation for 'THE COUNTRY FAIR.' consisting of two staves. The first staff is the melody in treble clef, 2/4 time, with a key signature of one sharp (F#). The second staff is the accompaniment in treble clef, 2/4 time, with a key signature of one sharp (F#).

THE LEGACY.

Country Dance.

Nº 72.

Musical notation for 'THE LEGACY.' consisting of two staves. The first staff is the melody in treble clef, 6/8 time, with a key signature of two flats (Bb, Eb). The second staff is the accompaniment in treble clef, 6/8 time, with a key signature of two flats (Bb, Eb).

MY LOVE SHE'S BUT A LASSIE YET.

Country Dance

Nº 73.

Musical notation for 'MY LOVE SHE'S BUT A LASSIE YET.' consisting of two staves. The first staff is the melody in treble clef, 2/4 time, with a key signature of one sharp (F#). The second staff is the accompaniment in treble clef, 2/4 time, with a key signature of one sharp (F#).

THE CAMPBELLS ARE COMIN'.

Country Dance.

Nº 74.

Musical notation for 'THE CAMPBELLS ARE COMIN'.' consisting of two staves. The first staff is the melody in treble clef, 6/8 time, with a key signature of one sharp (F#). The second staff is the accompaniment in treble clef, 6/8 time, with a key signature of one sharp (F#).

MY LORD TOMNODDY.

Country Dance.

Nº 75.

Musical notation for 'MY LORD TOMNODDY.' consisting of two staves. The first staff is the melody in treble clef, 6/8 time, with a key signature of one sharp (F#). The second staff is the accompaniment in treble clef, 6/8 time, with a key signature of one sharp (F#).

Nº 76.

LASS O' GOWRIE.

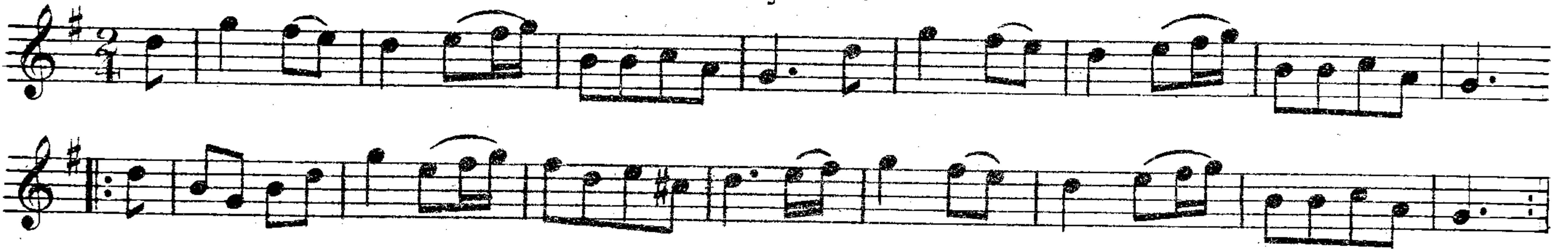
Country Dance.



Nº 77.

BLUE BELLS OF SCOTLAND.

Country Dance.



Nº 78.

AULD LANG SYNE.

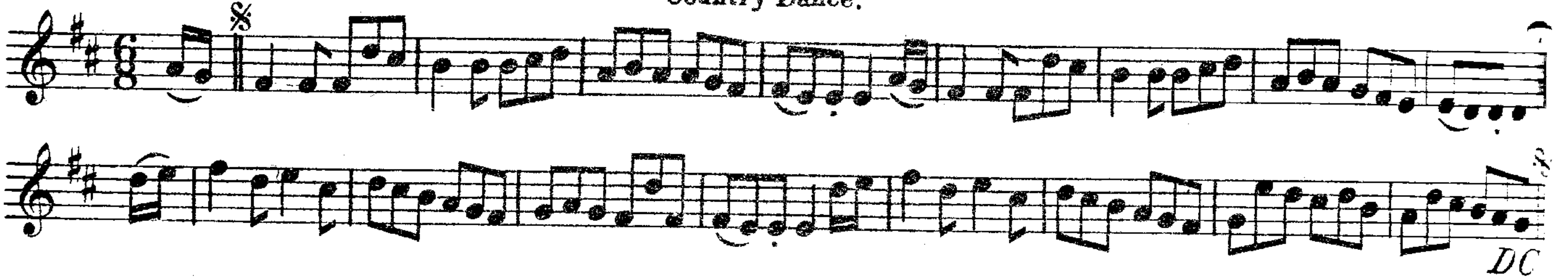
Country Dance.



Nº 79.

AP SHENKIN.

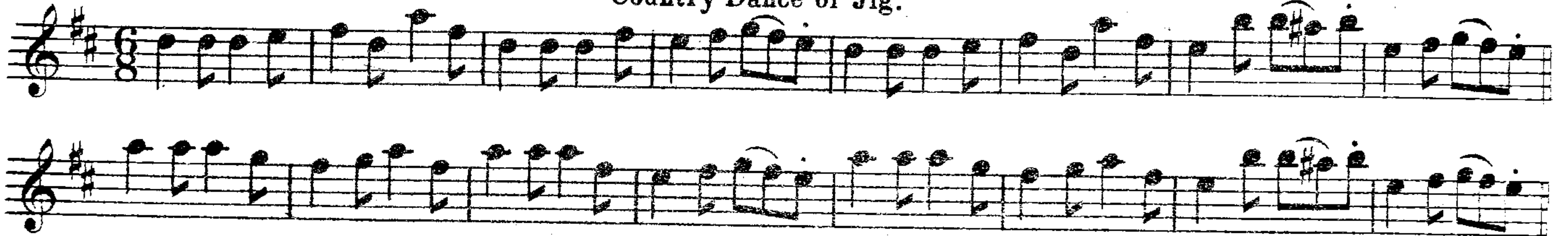
Country Dance.



Nº 80.

NORAH CREINA.

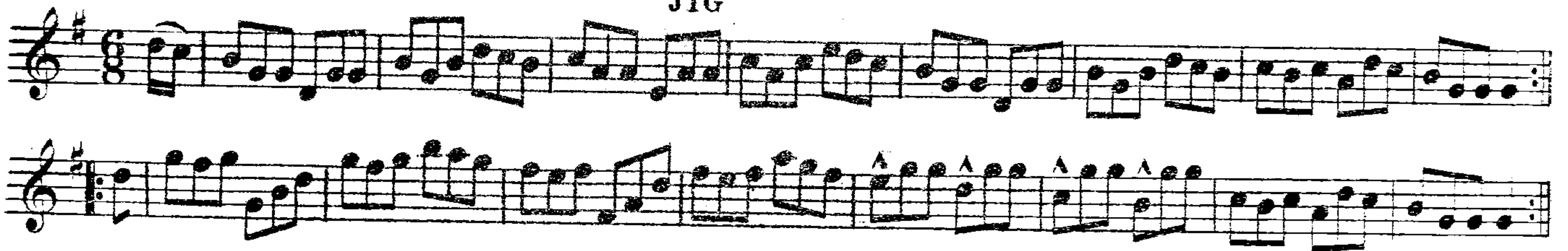
Country Dance or Jig.



Nº 81.

THE IRISH WASHERWOMAN.

JIG



FAR, FAR UPON THE SEA.

Country Dance.

No 82.

Musical notation for 'Far, Far Upon the Sea' in 2/4 time, G major. It consists of three staves of music. The first staff begins with a treble clef and a key signature of one sharp (F#). The second staff includes the instruction 'Cres.' at the end. The third staff begins with a dynamic marking 'f' and ends with 'D.C.'.

PADDY O'RAFFERTY.

JIG.

No 83.

Musical notation for 'Paddy O'Rafferty' in 6/8 time, G major. It consists of three staves of music. The first staff begins with a treble clef and a key signature of one sharp (F#).

HOW HAPPY THE SOLDIER WHO LIVES ON HIS PAY.

JIG.

No 84.

Musical notation for 'How Happy the Soldier who lives on his Pay' in 6/8 time, G major. It consists of three staves of music. The first staff begins with a treble clef and a key signature of one sharp (F#).

ST. PATRICK'S DAY.

JIG.

No 85.

Musical notation for 'St. Patrick's Day' in 6/8 time, G major. It consists of three staves of music. The first staff begins with a treble clef and a key signature of one sharp (F#).

RORY O'MORE.

Nº 86.

JIG.

Musical notation for 'Rory O'More' in treble clef, 6/8 time, key of D major. It consists of three staves of music. The first staff begins with a treble clef, a key signature of two sharps (F# and C#), and a 6/8 time signature. The melody is characterized by eighth and sixteenth notes with various rests and slurs.

THE SPRIG OF SHILLELA.

Nº 87.

JIG.

Musical notation for 'The Sprig of Shillela' in treble clef, 6/8 time, key of D major. It consists of three staves of music. The melody features a mix of eighth and sixteenth notes, with some triplet-like patterns and slurs.

THIS LIFE IS ALL CHEQUERED.

Nº 88.

JIG.

Musical notation for 'This Life is All Chequered' in treble clef, 6/8 time, key of D major. It consists of three staves of music. The melody is composed of eighth and sixteenth notes, with some triplet patterns and slurs.

GARRY OWEN.

Nº 89.

JIG.

Musical notation for 'Garry Owen' in treble clef, 6/8 time, key of D major. It consists of three staves of music. The melody includes eighth and sixteenth notes, with some triplet patterns and slurs. There are also some notes with an accent (^) above them.

PADDY WHACK.

Nº 90.



MONEY IN BOTH POCKETS.

Nº 91.

JIG.



PADDY O' CARROLL.

Nº 92.

JIG.



COLLEGE HORNPIPE.

Nº 93.



FISHER'S HORNPIPE.

No 94.

THE BRIDGE OF LODI. HORNPIPE.

No 95.

HARVEST HOME. HORNPIPE.

No 96.

THE SOLDIER'S JOY. HORNPIPE.

No 97.

Nº 98

THE DEVIL AMONG THE TAILORS.

Country Dance or Reel

Three staves of musical notation for 'THE DEVIL AMONG THE TAILORS.' The first staff begins with a treble clef, a key signature of one sharp (F#), and a common time signature (C). The melody is written in a single line across three staves, featuring a mix of eighth and sixteenth notes with some slurs and ties.

Nº 99

SPEED THE PLOUGH.

REEL.

Three staves of musical notation for 'SPEED THE PLOUGH.' The first staff begins with a treble clef, a key signature of two sharps (F# and C#), and a common time signature (C). The melody is written in a single line across three staves, featuring a mix of eighth and sixteenth notes with some slurs and ties.

Nº 100

CUTTY SARK.

REEL.

Three staves of musical notation for 'CUTTY SARK.' The first staff begins with a treble clef, a key signature of one sharp (F#), and a common time signature (C). The melody is written in a single line across three staves, featuring a mix of eighth and sixteenth notes with some slurs and ties. Trills are indicated with 'tr' above certain notes in the second and third staves.

D.C.S.

Nº 101

TULLOCHGORUM.

The Celebrated Highland Fling. Reel.

Three staves of musical notation for 'TULLOCHGORUM.' The first staff begins with a treble clef, a key signature of one sharp (F#), and a common time signature (C). The melody is written in a single line across three staves, featuring a mix of eighth and sixteenth notes with some slurs and ties. A trill is indicated with 'tr' above a note in the second staff, and a flat (b) is placed below a note in the third staff.

D.C.

N^o 102.

JOHNNY'S MADE A WEDDING O' IT.
REEL.

Musical notation for 'JOHNNY'S MADE A WEDDING O' IT. REEL.' consisting of three staves of music in treble clef, 2/4 time, with a key signature of one sharp (F#).

N^o 103.

JOHN CHEAP THE CHOPMAN.
REEL.

Musical notation for 'JOHN CHEAP THE CHOPMAN. REEL.' consisting of three staves of music in treble clef, 2/4 time, with a key signature of one sharp (F#).

N^o 104.

REEL O' THULICHAN, OR TULLOCH.

Musical notation for 'REEL O' THULICHAN, OR TULLOCH.' consisting of two staves of music in treble clef, 2/4 time, with a key signature of two sharps (F# and C#). A repeat sign is present at the beginning of the first staff.

N^o 105.

GREEN GROW THE RUSHES, O!
REEL.

Musical notation for 'GREEN GROW THE RUSHES, O! REEL.' consisting of two staves of music in treble clef, 2/4 time, with a key signature of one sharp (F#).

N^o 106.

CAPTAIN KEELER.
REEL.

Musical notation for 'CAPTAIN KEELER. REEL.' consisting of two staves of music in treble clef, 2/4 time, with a key signature of two flats (Bb and Eb). Trill ornaments are indicated above some notes in the first staff.

SIR DAVID HUNTER BLAIR

Nº 107.

REEL



THE MARQUIS OF HUNTLEY'S HIGHLAND FLING.

Nº 108.

STRATHSPEY.



Nº 109.

LADY BAIRD.

STRATHSPEY.



THE SILVER LAKE.

Nº 110.

SPANISH WALTZ.



THE SPANISH FANDANGO.

Nº 111.

SPANISH WALTZ.



THE GUARACHA WALTZ.

SPANISH WALTZ.

Nº 112.

Two staves of musical notation for 'THE GUARACHA WALTZ'. The first staff begins with a treble clef, a key signature of one sharp (F#), and a 3/4 time signature. The melody consists of eighth and sixteenth notes with various ornaments and slurs. The second staff continues the melody. The piece concludes with a double bar line and the marking 'D.C.' (Da Capo).

LA GITANA.

May be used to Spanish Waltz.

Nº 113.

Four staves of musical notation for 'LA GITANA'. The first staff starts with a treble clef, a key signature of one sharp (F#), and a 3/4 time signature. It begins with a dynamic marking of *p* (piano) and a repeat sign. The melody is characterized by eighth and sixteenth notes with slurs and accents. The second and third staves continue the piece. The fourth staff ends with a double bar line, a dynamic marking of *p*, and the marking 'D.C.' (Da Capo).

SPANISH DANCE.

Nº 114.

Six staves of musical notation for 'SPANISH DANCE'. The first staff has a treble clef, a key signature of one sharp (F#), and a 3/4 time signature. The melody features eighth and sixteenth notes with slurs and accents. The second and third staves continue the piece. The fourth staff has a dynamic marking of *mf* (mezzo-forte). The fifth and sixth staves conclude the piece with a double bar line, a dynamic marking of *f marcato* (forte marcato), and the marking 'D.C.' (Da Capo).

N. 115. THE FAVORITE DANCE OF THE COTILLION.

Tempo di Valse

Musical score for 'THE FAVORITE DANCE OF THE COTILLION' in 3/4 time. The score consists of four staves of music. The first staff begins with a piano (*p*) dynamic. The second staff continues the melody. The third staff features a forte (*f*) dynamic and includes a repeat sign with first and second endings. The fourth staff returns to a piano (*p*) dynamic.

N^o 116. GAVOTTE DE VESTRIS.

Moderato

Musical score for 'GAVOTTE DE VESTRIS' in 2/4 time. The score consists of five staves of music. The first staff starts with a forte (*f*) dynamic, followed by a piano (*p*) dynamic, a crescendo (*cres.*), and another forte (*f*) dynamic. The second staff begins with a piano (*p*) dynamic. The third staff includes a crescendo (*cres.*), forte (*f*), fortissimo (*ff*), and mezzo-piano (*mp*) dynamics. The fourth staff features a crescendo (*cres.*), fortissimo (*ff*), and piano (*p*) dynamics, with first and second endings. The fifth staff includes a crescendo (*cres.*) and forte (*f*) dynamics.

THE CRACOVienne.

N^o 117.

Musical score for 'THE CRACOVienne' in 2/4 time. The score consists of two staves of music. The first staff begins with a forte (*f*) dynamic and includes a triplet. The second staff starts with a piano (*p*) dynamic, followed by a forte (*f*) dynamic and another triplet.

CHRISTMAS COMES BUT ONCE A YEAR.

N^o 118.

Old English Dance.

Musical notation for 'CHRISTMAS COMES BUT ONCE A YEAR.' consisting of three staves of music in 3/4 time, featuring a mix of eighth and sixteenth notes.

THE CACHOUCHA.

N^o 119.

May be used to Spanish Waltz.

Musical notation for 'THE CACHOUCHA.' consisting of four staves of music in 3/4 time, featuring a mix of eighth and sixteenth notes with some triplets.

LE MINUET DE LA COUR.

N^o 120.

Andante pomposo

Musical notation for 'LE MINUET DE LA COUR.' consisting of six staves of music in 3/4 time, featuring a mix of eighth and sixteenth notes with dynamic markings. The lyrics 'cres - cen - do' are written below the third staff.