



Partita in B Minor

(Transcribed to E Minor)

J. S. Bach (BWV 1002)

Arranged for Viola by Mike Magatagan 2017

I. Allemande (♩ = 33)

Viola

4

6

8

10

12

14

16

18

20

22

24

26

1. *rit.* 2.

II. Double (♩ = 60)

Viola

4

6

8

10

12 *rit.*

14 **a Tempo**

17

19

21

24

26 1. *rit.* 2. *rit.*

Detailed description: This block contains the musical notation for measures 10 through 26. The music is written in a single staff in bass clef with a key signature of one sharp (F#) and a time signature of 3/4. The notation includes various rhythmic values such as eighth and sixteenth notes, often beamed together, and rests. There are several slurs and phrasing marks. Measure 12 is marked with a 'rit.' (ritardando). Measure 14 is marked with 'a Tempo'. Measure 26 features a first ending (1.) and a second ending (2.), both marked with 'rit.'.

III. Courante (♩ = 150)

Viola

8

15

Detailed description: This block contains the musical notation for the Viola part of 'III. Courante', measures 1 through 15. The music is written in a single staff in bass clef with a key signature of one sharp (F#) and a time signature of 3/4. The notation includes various rhythmic values such as eighth and sixteenth notes, often beamed together, and rests. There are several slurs and phrasing marks.

22

28

34

41

47

53

60

66

72

78

IV. Double (*Presto* ♩ = 100)

Viola

4

7

10

13

16

19

22

25

28

31

rit.

a Tempo

34

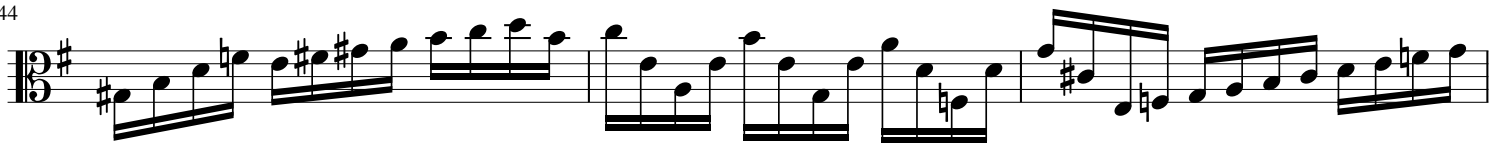
38



41



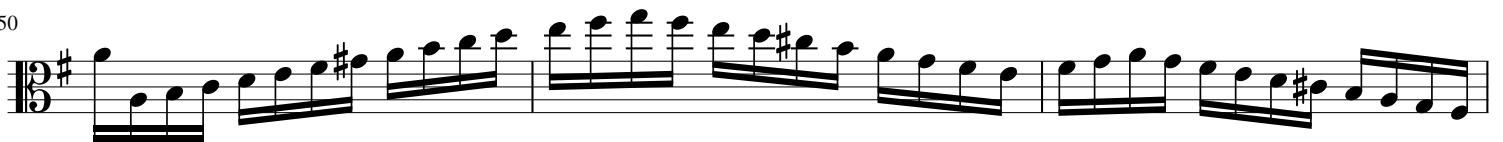
44



47



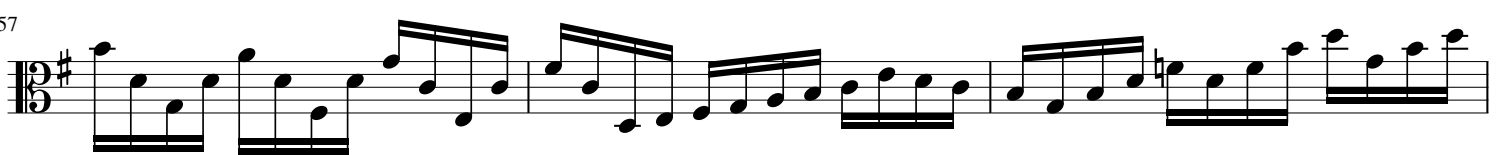
50



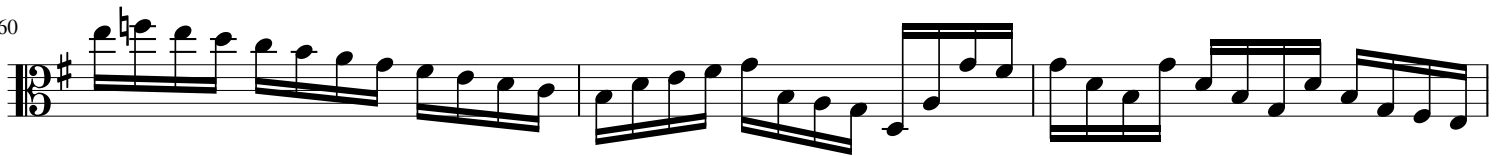
53



57



60



63



66



69



72



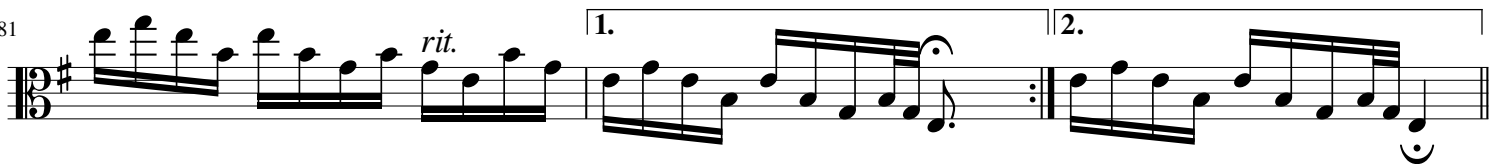
75



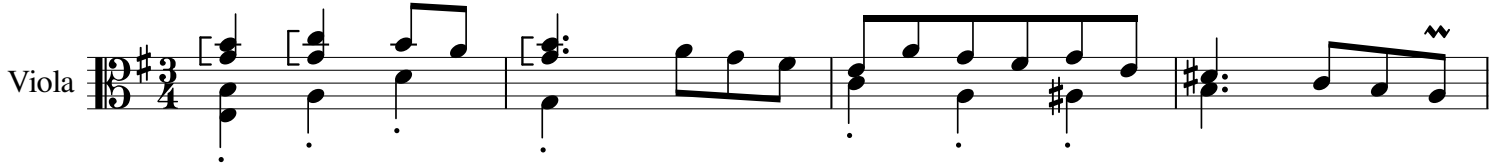
78



81



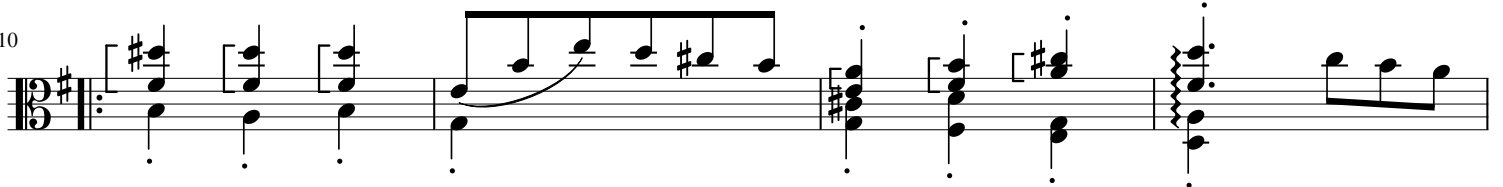
V. Sarabande (♩ = 120)



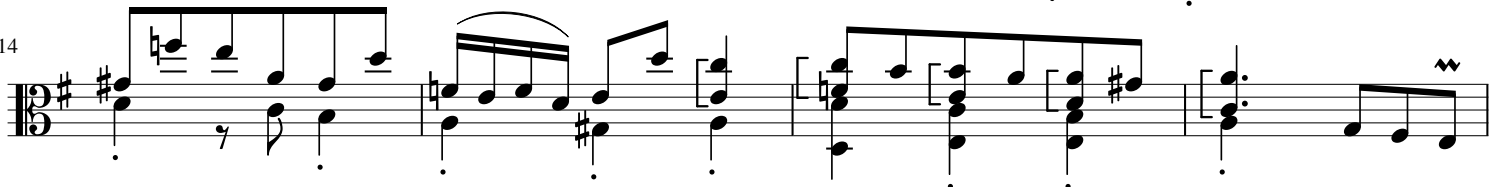
5



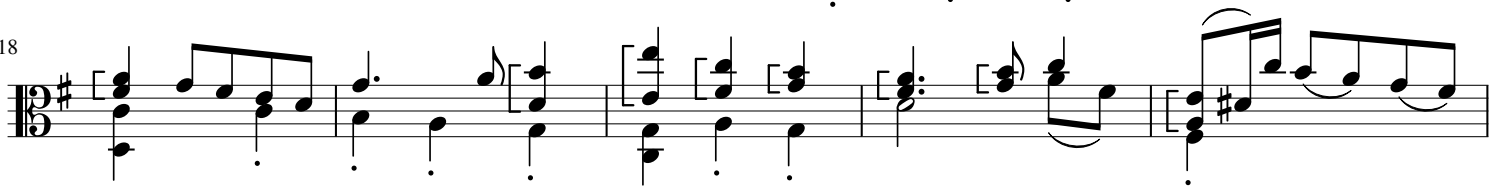
10



14



18



23



29

VI. Double (♩ = 90)

Viola

5

10

14

18

23

27

31

VII. Tempo di Bourrée (♩ = 75)

Viola

6

11

16

22 *a Tempo*

28

33

37

41

46

tr

rit.

50

54

58

62

66

VIII. Double (♩ = 75)

Viola

6

11

16

22

27

32

37

41

46

51

56

61

66